

Town Square Building 6

805 Plum Street
Olympia, WA

Town Square Bldg 6
Olympia Central
Business District

4th Floor: 10,399 SF

\$19.50/SF modified gross

Tenant pays for utilities and
janitorial

On site, after hours security

On site deli/coffee

Ample parking

Close to I-5 with easy access to
Farmers Market, State Capitol, and
amenities

Shell space - ready for TI's,
Landlord offering
aggressive allowance

Common areas and
restrooms remodeled



Building



Contact

Evan Parker

360.705.0174

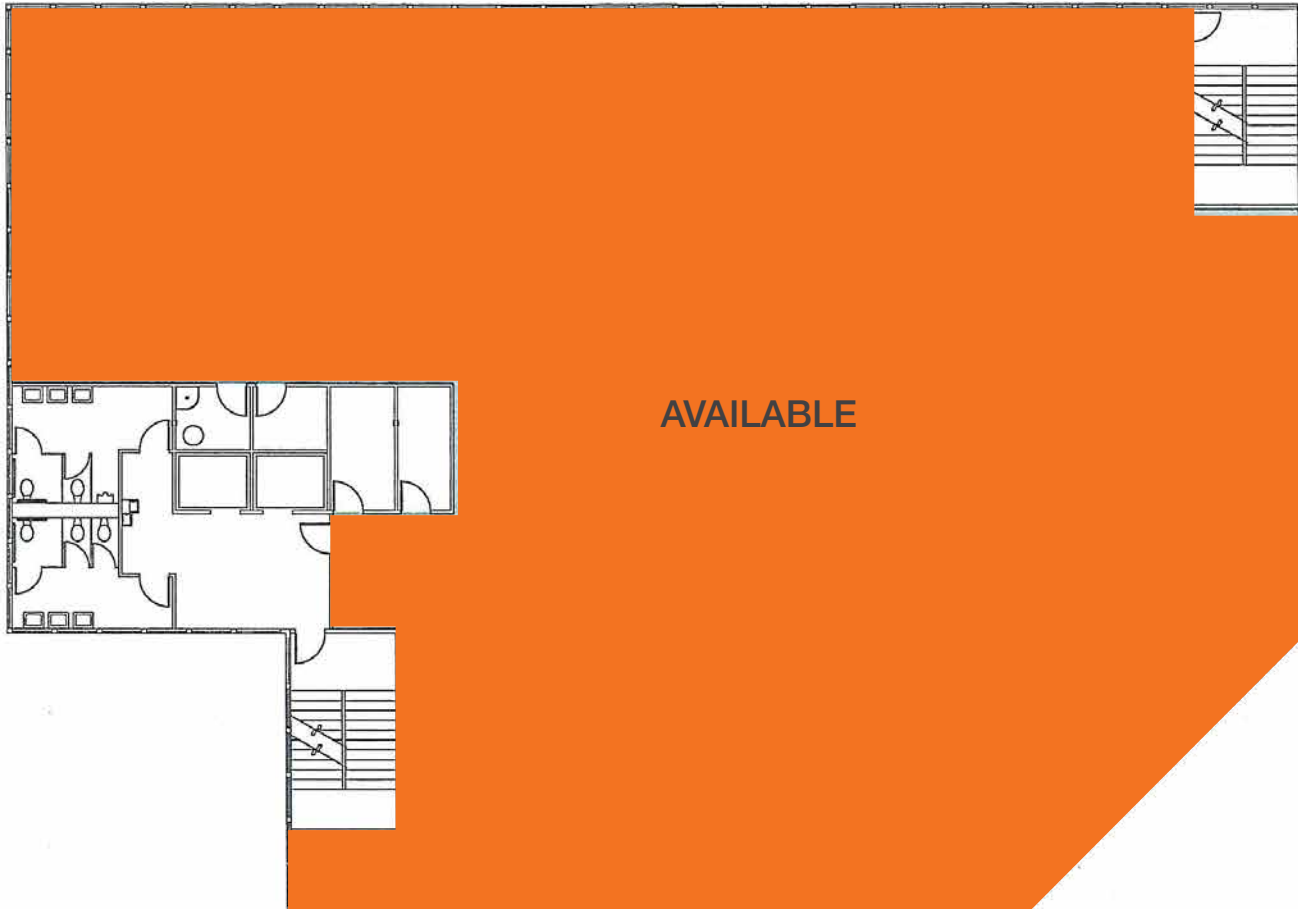
eparker@kiddermathews.com

Amy Evans

360.705.1377

aevans@kiddermathews.com

805 Plum Street SE



Contact

Evan Parker
360.705.0174
eparker@kiddermathews.com

Amy Evans
360.705.1377
aevans@kiddermathews.com