

Northeast Business Center

800 Corporate Blvd.
Newburgh, NY 12550



GROSS LEASABLE AREA

676,000 sf

Building Specifications

Size: 60,143 square feet available

Built: 1988

Ceiling Height: 24'

Floor plates: 52-500,000 square feet

Floor loads: 225 lbs. psf minimum

Loading dock: 11 docks

Electrical capacity/voltage: 800 amps

Base building cooling/heating: Individual RTU HVAC systems

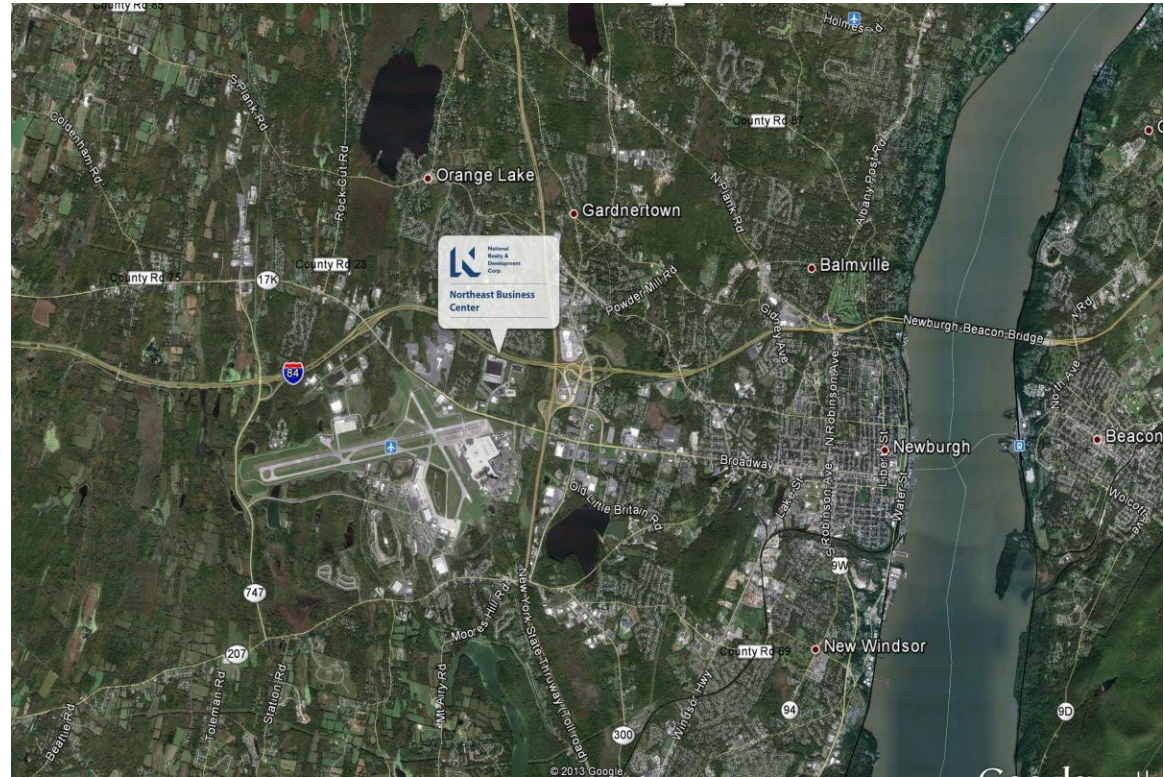
Life safety: Fully-sprinklered

Elevators: No

Parking: Varies

Tenant electric: Individual meters with Central Hudson Electric & Gas

Building hours of operation: 24/7



Details

- Northeast Business Center is a 141-acre corporate park and the premier industrial facility in the Hudson Valley.
- The site is located on Route 17K opposite Stewart International Airport and within 1/8 mile of the New York State Thruway and Interstate 84.
- Ample on-site parking is available.

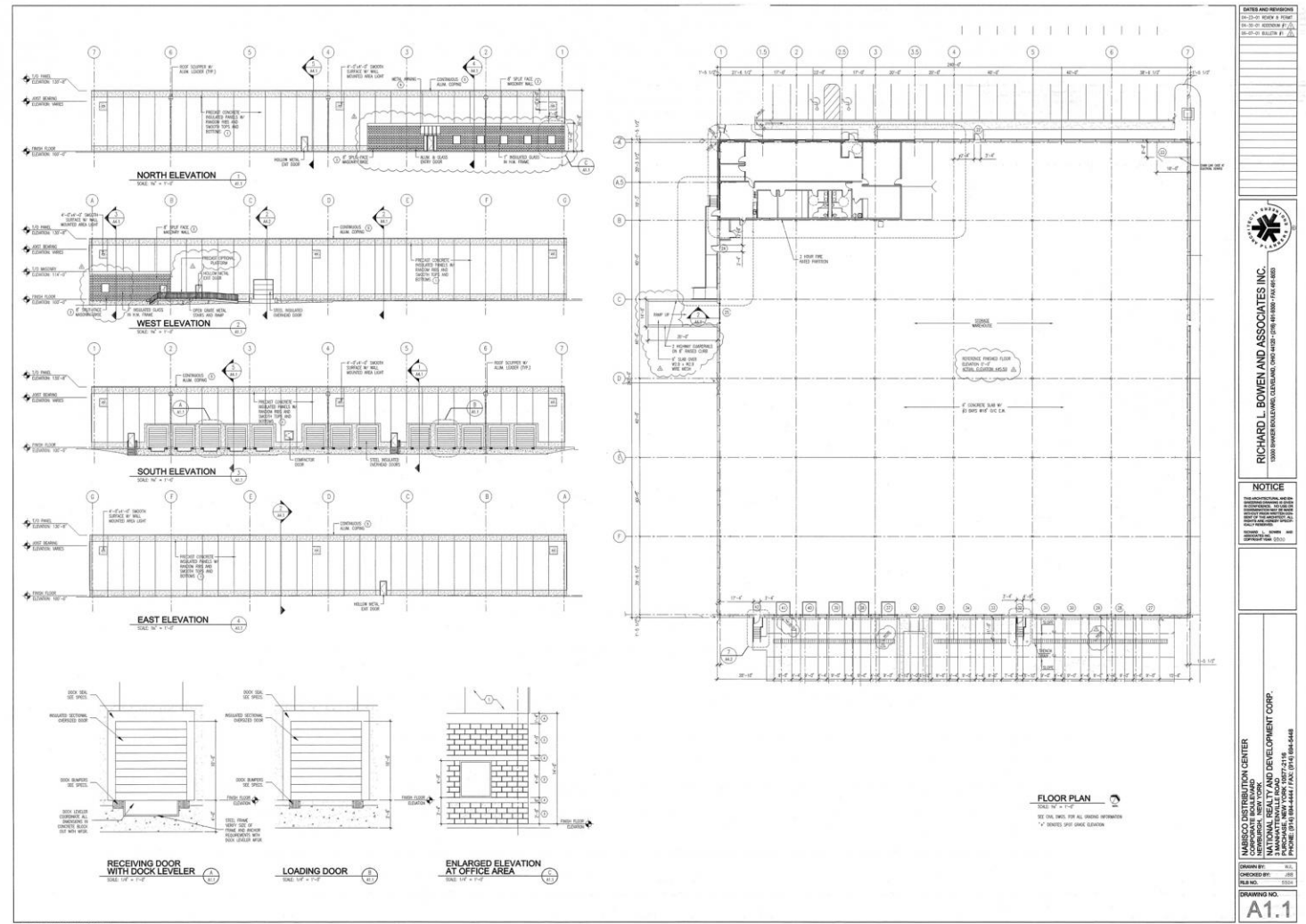
Northeast Business Center

800 Corporate Blvd.
Newburgh, NY 12550



Space Available

Building 800-Building
Layout: 60,143 sf



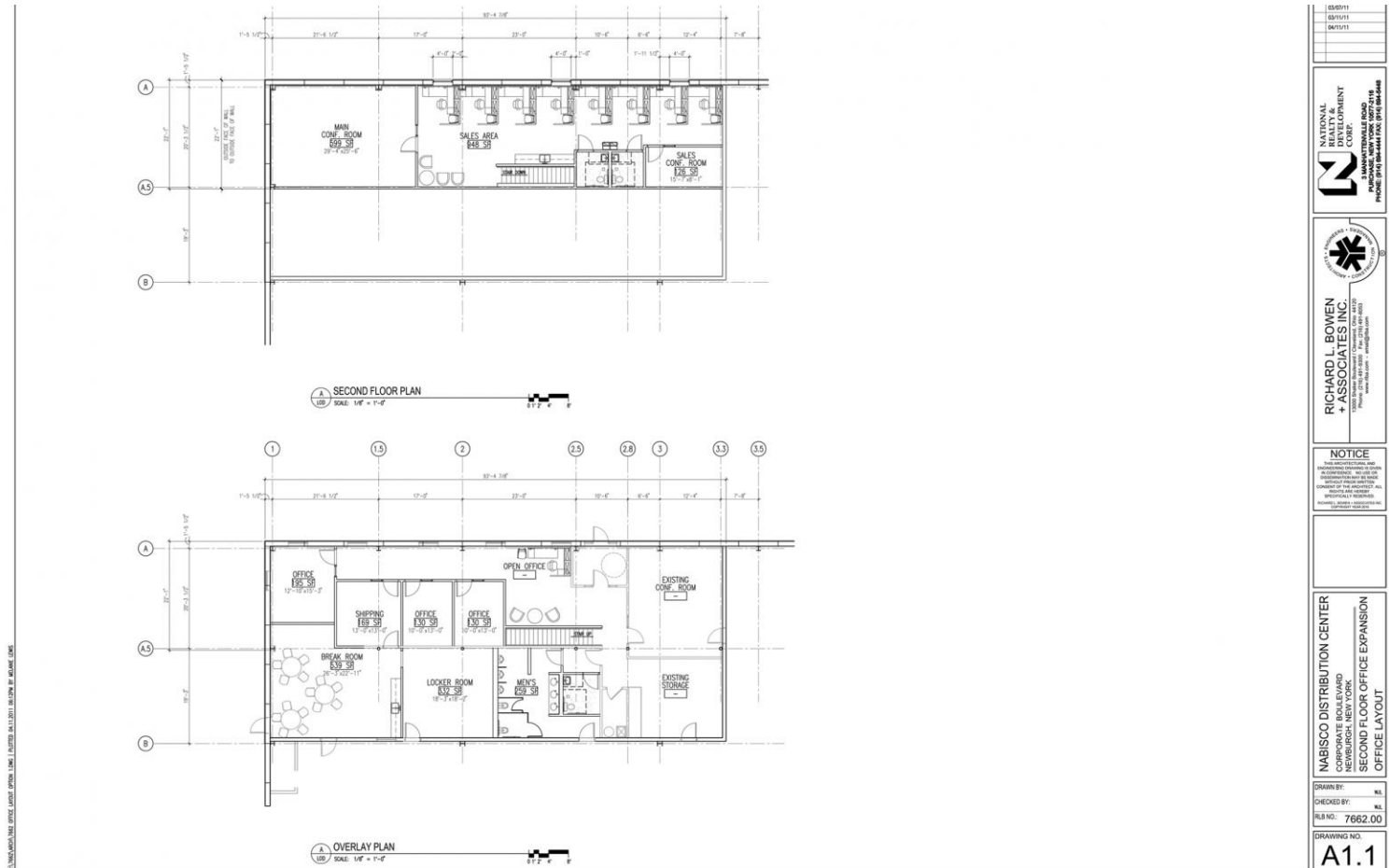
Northeast Business Center

800 Corporate Blvd.
Newburgh, NY 12550



Space Available

Building 800-Office
Layout: 60,143 sf

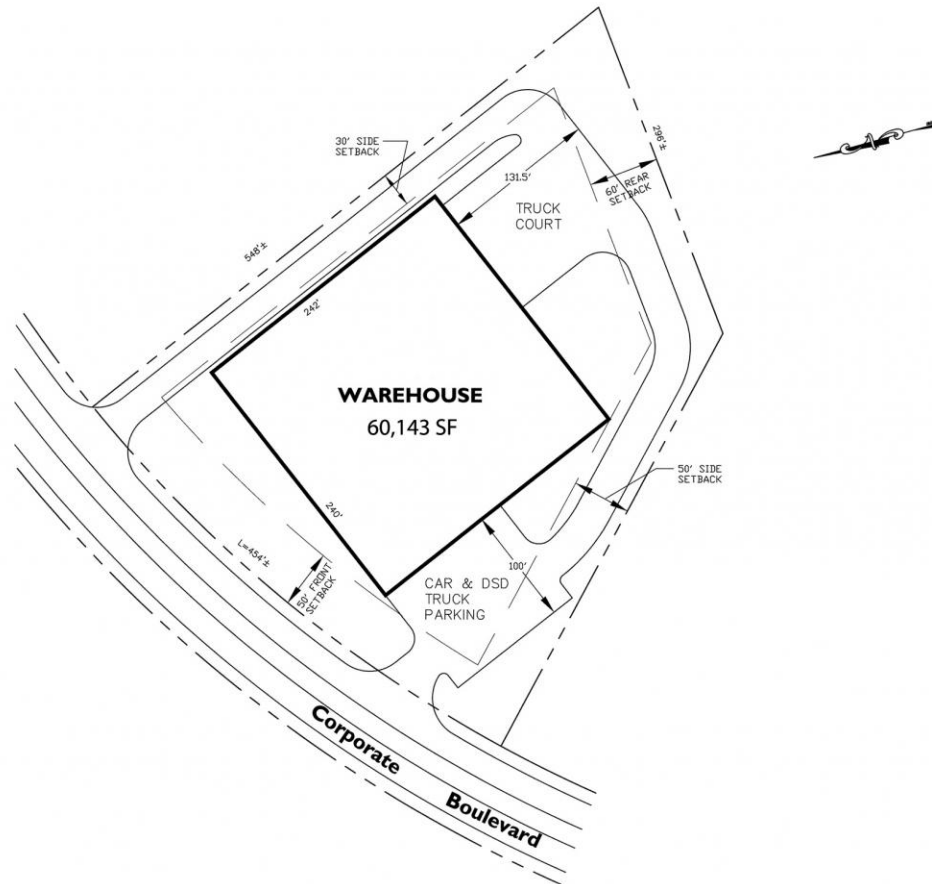


Northeast Business Center

800 Corporate Blvd.
Newburgh, NY 12550

Space Available

Building 800-Site Plan :
60,143 sf



Northeast Business Center
Newburgh, New York
Conceptual Layout Plan #2

NO.	REVISION	DATE

NATIONAL REALTY & DEVELOPMENT CORP.
3 MANHATTANVILLE ROAD
PURCHASE, NEW YORK 10577
914-896-6664

PROJECT	HEBC	SHEET
SCALE	1"=40'	1 OF 1
DATE	12-7-00	

Northeast Business Center

800 Corporate Blvd.
Newburgh, NY 12550



Northeast Business Center

800 Corporate Blvd.
Newburgh, NY 12550



Northeast Business Center

800 Corporate Blvd.
Newburgh, NY 12550



Northeast Business Center

800 Corporate Blvd.
Newburgh, NY 12550



Northeast Business Center

800 Corporate Blvd.
Newburgh, NY 12550



Northeast Business Center

800 Corporate Blvd.
Newburgh, NY 12550



Leasing Contacts



Brian F. Sekel

914.272.8033

brian.sekel@nrdc.com