

8877 W UNION HILLS DR | PEORIA, AZ 85382

UNION HILLS
PROFESSIONAL CENTRE



COMMERCIAL PROPERTIES INC.

Locally Owned. Globally Connected. CPI PAC International

TEMPE: 2323 W. University Drive, Tempe, AZ 85281 | 480.966.2301
SCOTTSDALE: 8777 N. Gainey Center Dr., Suite 245, Scottsdale, AZ 85258 | www.cpi-az.com

DALLIN PACE

D 480.522.2774

M 480.815.8275

DPACE@CPIAZ.COM

The information contained herein has been obtained from various sources. We have no reason to doubt its accuracy; however, J & J Commercial Properties, Inc. has not verified such information and makes no guarantee, warranty or representation about such information. The prospective buyer or lessee should independently verify all dimensions, specifications, floor plans, and all information prior to the lease or purchase of the property. All offerings are subject to prior sale, lease, or withdrawal from the market without prior notice.

03 17 22

HIGH-END PROFESSIONAL MEDICAL OFFICE COMPLEX

Address	8877 W Union Hills Dr Peoria, AZ 85382
Building Size	±6,415 SF
Year Built	2004
Zoning	C-2, City of Peoria

Property offers great access in an easy to find location with abundant parking and a great mix of medical and dental practices.



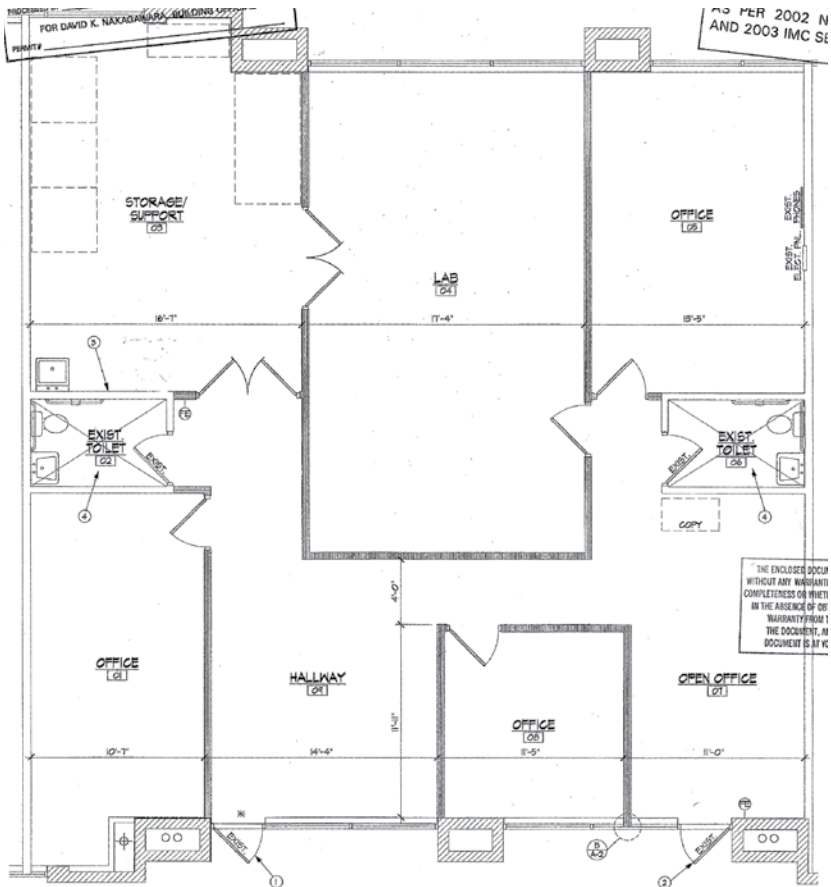
MEDICAL OFFICE AVAILABLE FOR LEASE

Suite	A160
Size	±2,286 SF
Lease Rate	\$21.50 NNN

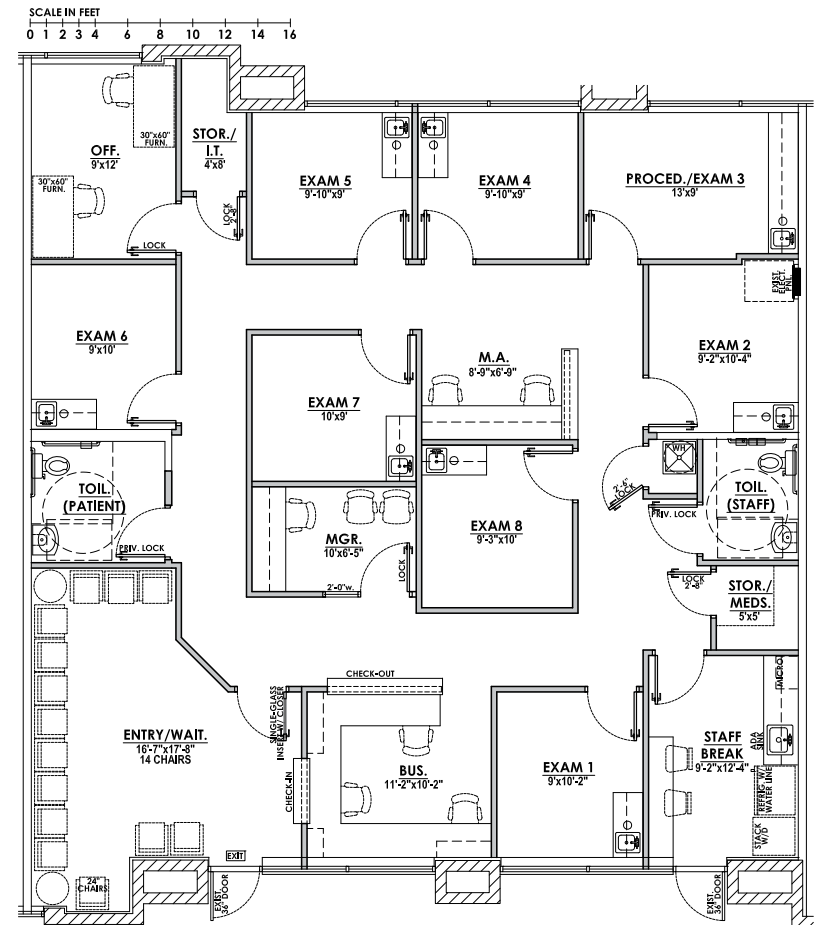


Floor Plan

Existing

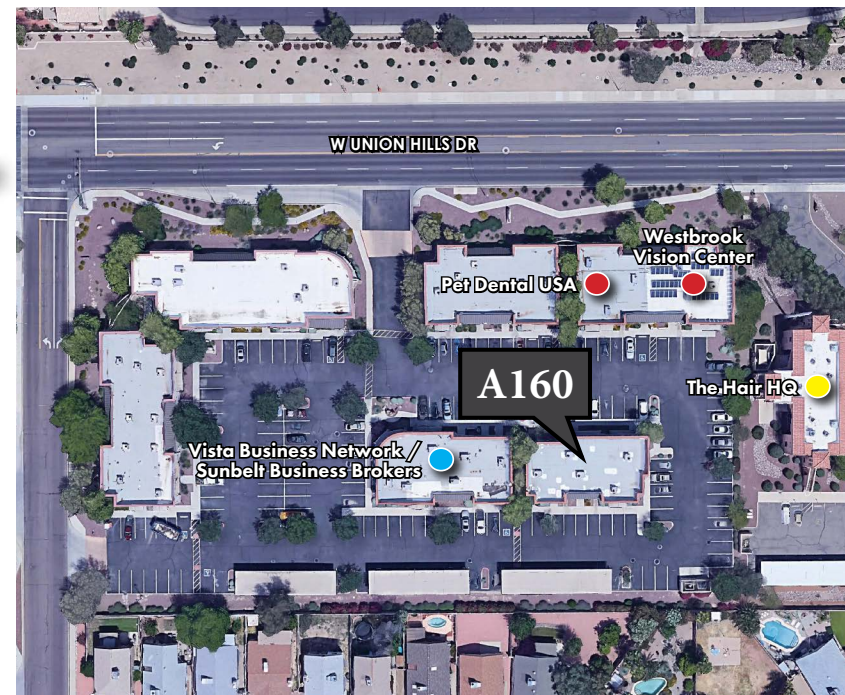
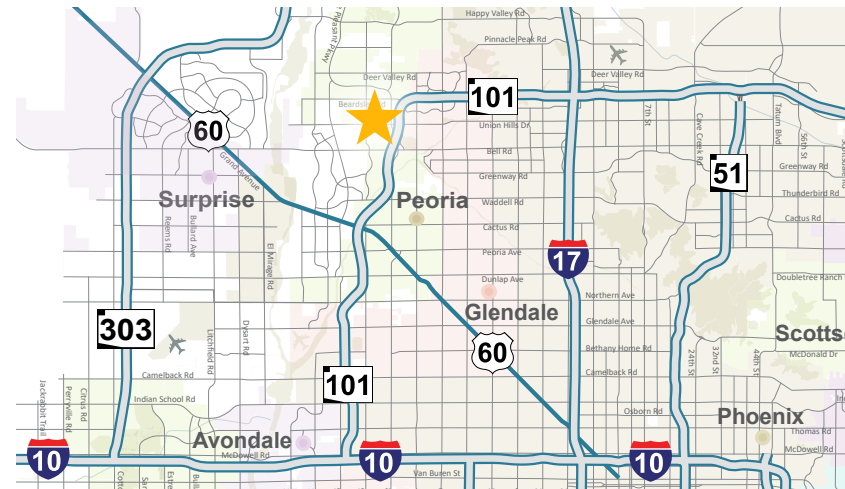


Purposed Medical Buildout



UNION HILLS

PROFESSIONAL CENTRE



COMMERCIAL PROPERTIES INC.

Locally Owned. Globally Connected. CPI PAC International

TEMPE: 2323 W. University Drive, Tempe, AZ 85281 | 480.966.2301
SCOTTSDALE: 8777 N. Gainey Center Dr., Suite 245, Scottsdale, AZ 85258 | www.cpi.az.com

DALLIN PACE

D 480.522.2774

M 480.815.8275

DPACE@CPIAZ.COM

The information contained herein has been obtained from various sources. We have no reason to doubt its accuracy; however, J & J Commercial Properties, Inc. has not verified such information and makes no guarantee, warranty or representation about such information. The prospective buyer or lessee should independently verify all dimensions, specifications, floor plans, and all information prior to the lease or purchase of the property. All offerings are subject to prior sale, lease, or withdrawal from the market without prior notice.

03 17 22