



PROPERTY DETAILS

10,135± SF freestanding retail building with drive-thru on 1.17± Acres

- Well located at the intersection of Main Street and Route 26
- Large lighted parking area
- Prominent pylon signage available
- Traffic Counts of 16,950 daily cars per 2017 ME DOT
- Lease rate of \$15.00/SF NNN



PROPERTY DETAILS

OWNER	Daniel G. Kamin Maine, LLC
ASSESSORS REFERENCE	Map U-1, Lot 6
BUILDING SIZE	10,135± SF
LOT SIZE	1.17± Acres
CONSTRUCTION	1999, Masonry & Steel
PARKING	Ample on-site parking
HVAC	Rooftop HVAC Units
UTILITIES	Municipal water/sewer
ACCESS	Access from both Alpine & Main Street - located at lighted intersection
ZONING	Commercial
LEASE RATE	\$15.00 SF/yr (NNN)

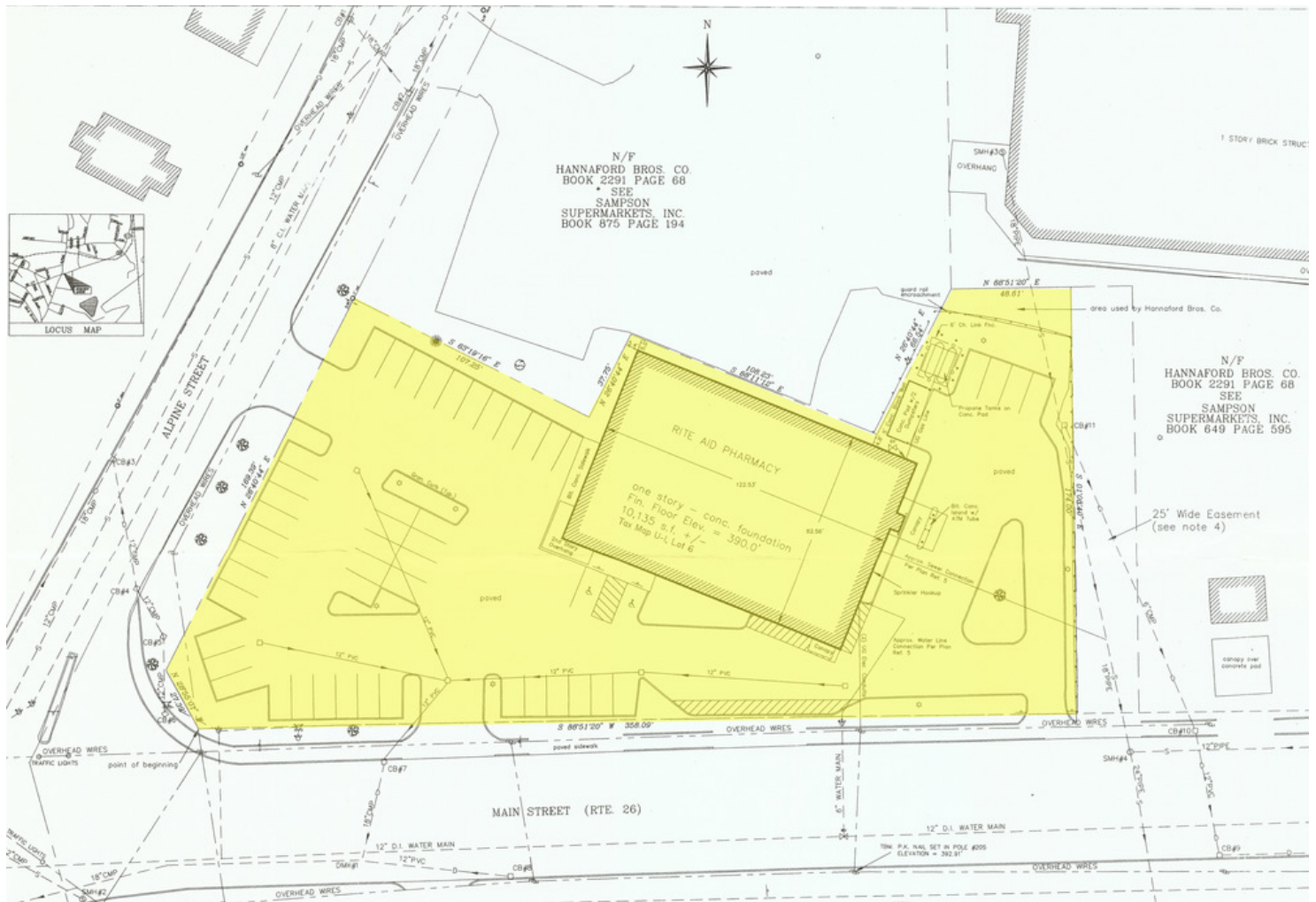


FOR LEASE | FORMER RITE AID

259 MAIN STREET, SOUTH PARIS, ME 04281



SITE PLAN



FOR LEASE | FORMER RITE AID

259 MAIN STREET, SOUTH PARIS, ME 04281



CONTACT US



GREG BOULOS
Broker, Partner
+1 207.553.1715 D
+1 207.831.3000 C
gboulos@boulos.com



SAMANTHA MARINKO
Associate
+1 207.553.1723 D
+1 908.433.5049 C
smarinko@boulos.com

©2019 The Boulos Company, Inc. All rights reserved. This information has been obtained from sources believed reliable, but has not been verified for accuracy or completeness. You should conduct a careful, independent investigation of the property and verify all information. Any reliance on this information is solely at your own risk. The Boulos Company and The Boulos Company logo are service marks of The Boulos Company, Inc. All other marks displayed on this document are the property of their respective owners. Photos herein are the property of their respective owners. Use of these images without the express written consent of the owner is prohibited.