



DORAL PARK CENTRE

OFFICES | SHOPPES | HOTELS



In the Heart of Doral

DORAL PARK CENTRE is a 200,000-square foot mixed-use development in the heart of Doral, one of the most rapidly growing cities in South Florida. The complex will include one 80,000 square foot office tower with ground floor retail, three hotels, free-standing retail, restaurants and banks.

Doral Park Centre services a dense business community day and night.

For business owners and professionals looking for a great work-and-play environment, **Doral Park Centre** is the perfect solution. Enjoy close proximity to Miami International Airport, the Palmetto Expressway, the Florida Turnpike, Miami International Mall, Dolphin Mall, and the world-famous Doral Golf & Spa Resort.

- Office and Retail Space for Lease
- Smart, Distinctive Architecture
- 80,000 S.F. Office Tower with Ground Floor Retail
- Office Units from 1,500 S.F., up to 20,000 S.F. for a Full Floor
- Individually Controlled A/C and Electric
- Enclosed Parking Garage
- Secure 24-Hour Card Access
- Minutes from Doral Golf & Spa Resort, Palmetto Expressway, Florida Turnpike and Miami International Airport

Demographics

	1 MILE	3 MILES	5 MILES
Population	16,004	84,468	269,975
Average Household Income	\$98,875	\$67,033	\$54,985
Median Age	33	34	38



NW 41st Street and
NW 107th Avenue (SEC)
Doral, Florida 33178

305.667.6461
DoralParkCentre.com

Developed by



Offices

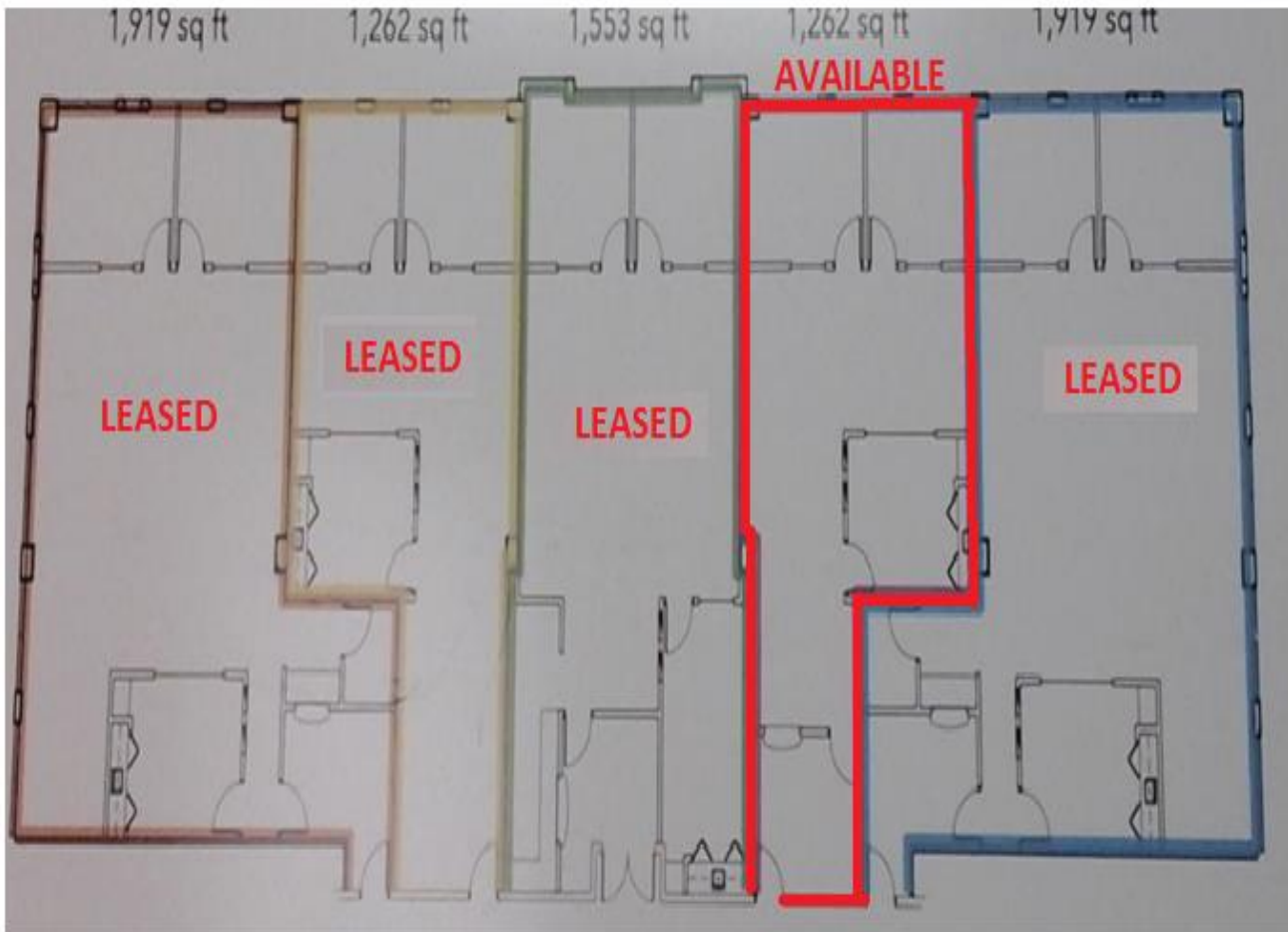


EXCLUSIVE AGENT
SUCHMAN
RETAIL GROUP

1550 Madruga Avenue
Suite 230
Coral Gables, Florida 33146
suchmangroup.com

Ana Vega-Garcia
Director of Leasing
ana@suchmangroup.com
305.667.6461 Ext.11

3rd Floor Office Available facing NW 41st Street

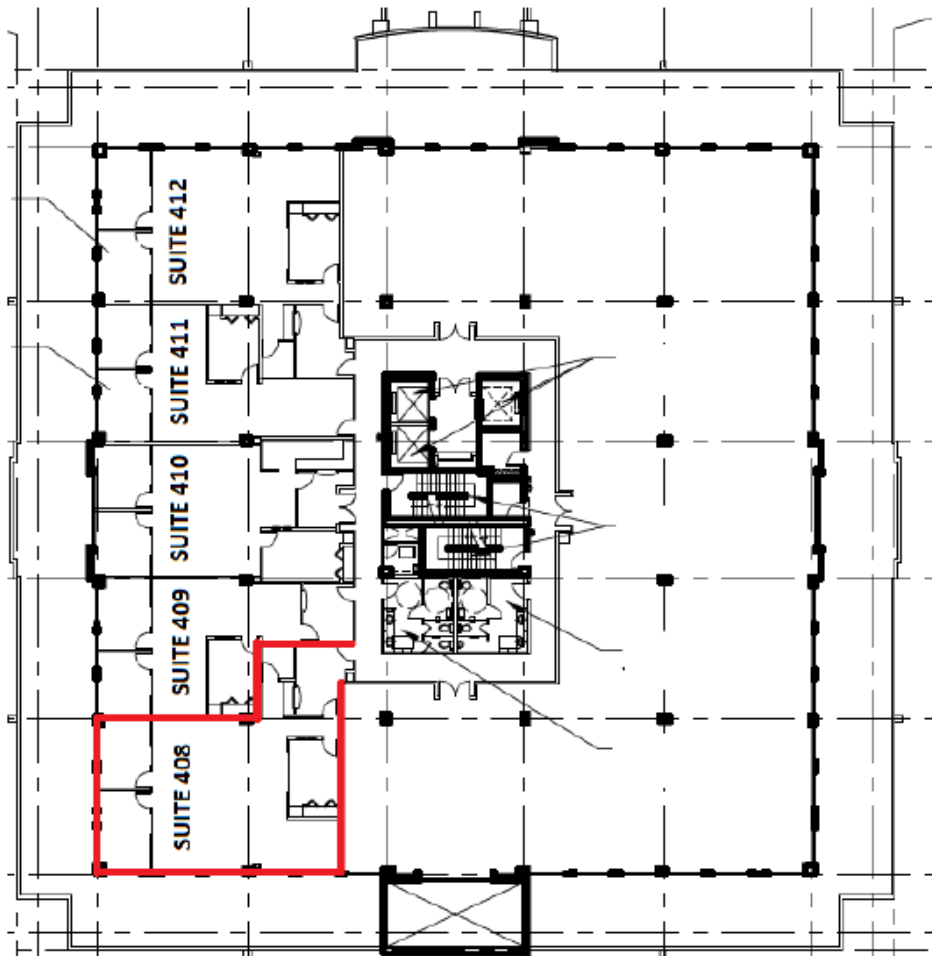


EXCLUSIVE AGENT
SUCHMAN
RETAIL GROUP

1550 Madruga Avenue
Suite 230
Coral Gables, Florida 33146
suchmangroup.com

Ana Vega-Garcia
Director of Leasing
ana@suchmangroup.com
305.667.6461 Ext.11

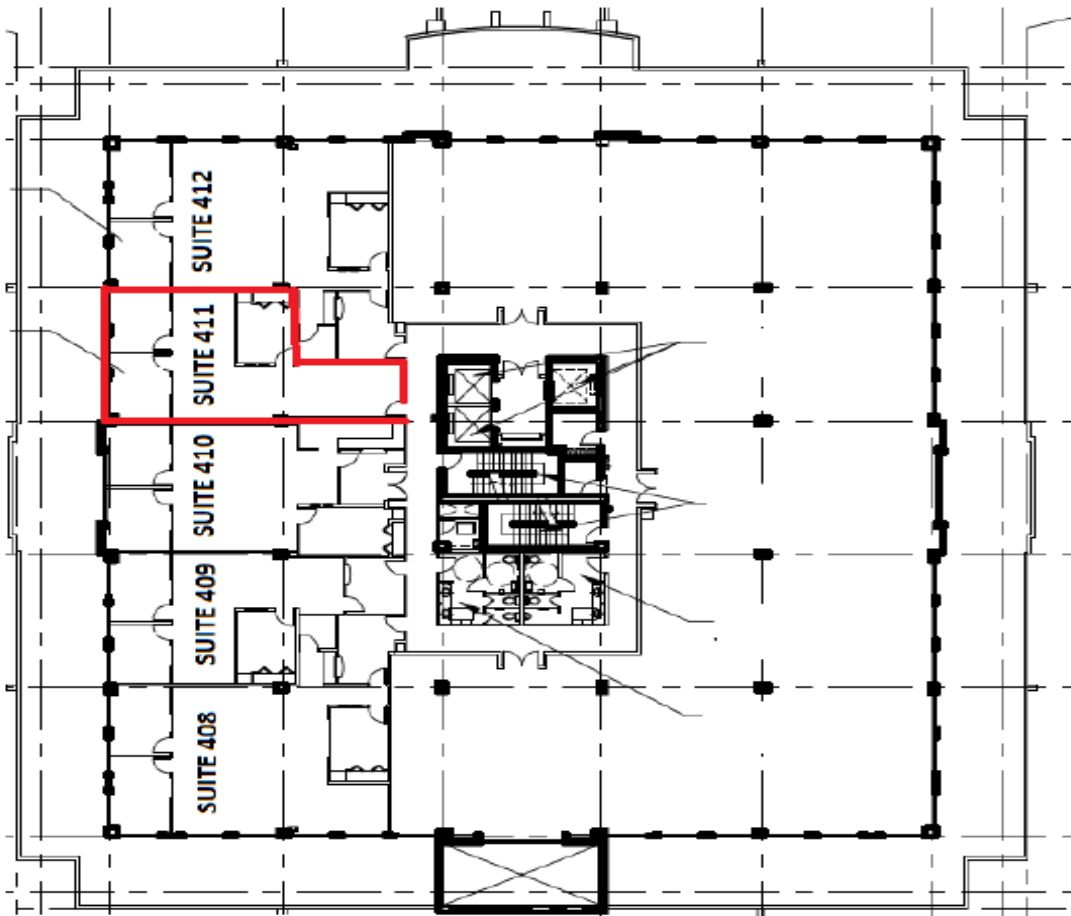
SUITE 408
1,919 SF
RENT \$ 28.00 Modified Gross
Net of Electrical and Janitorial in Unit



4th FLOOR

This unit will be available June 2018

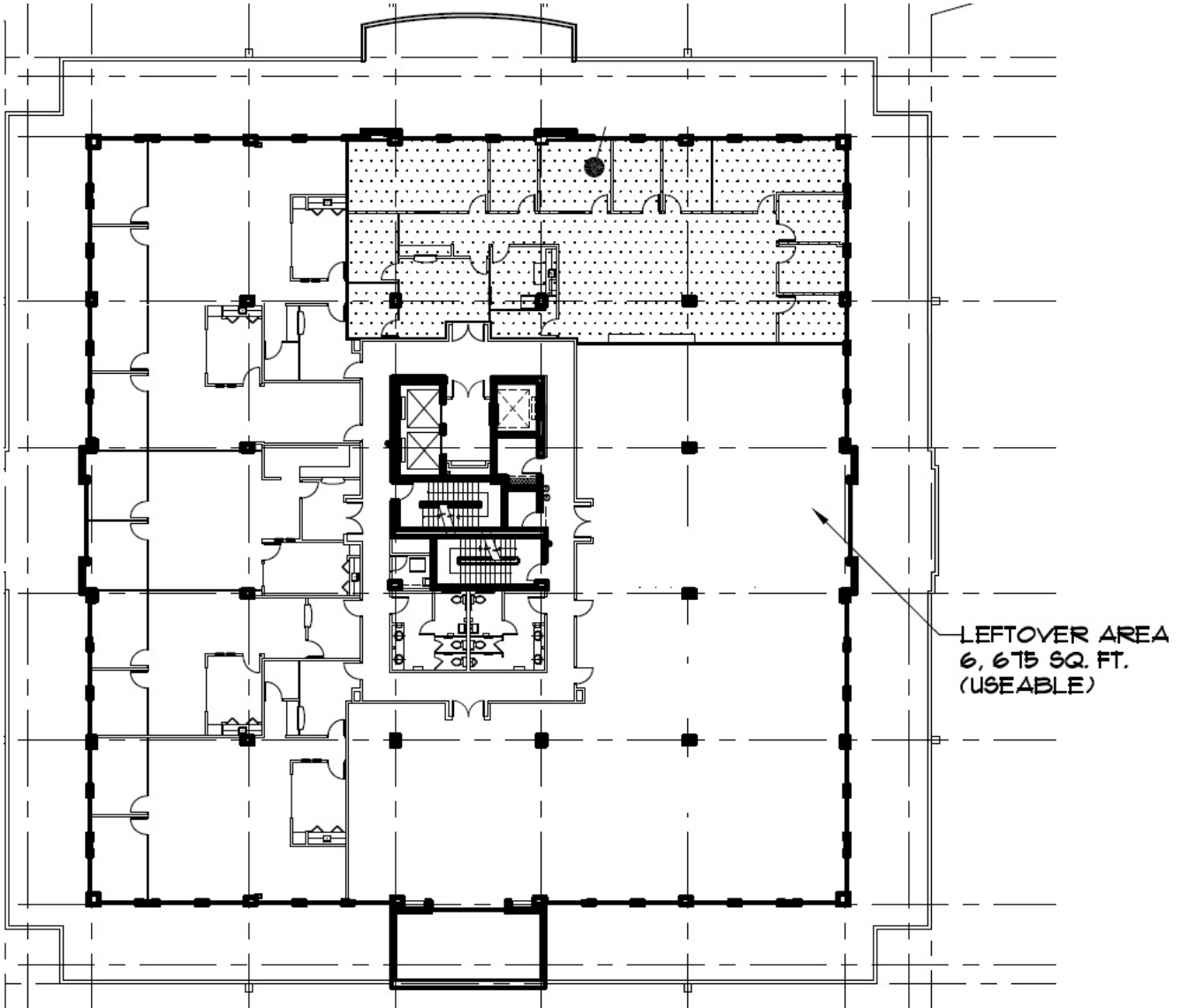
SUITE 411
1,262 SF
RENT \$ 28.00 Modified Gross
Net of Electrical and Janitorial in Unit



4th FLOOR

Remaining Area on 4th Floor for Build to Suite

+/- 6,675 SF





Doral Location Map



Serves surrounding dense business district and residential communities