

For Sale

Commercial Land

List price: \$4.50/ sq. ft.



Opal Lane & Western Ave. Lots

Hartford, SD 57033

Property Features

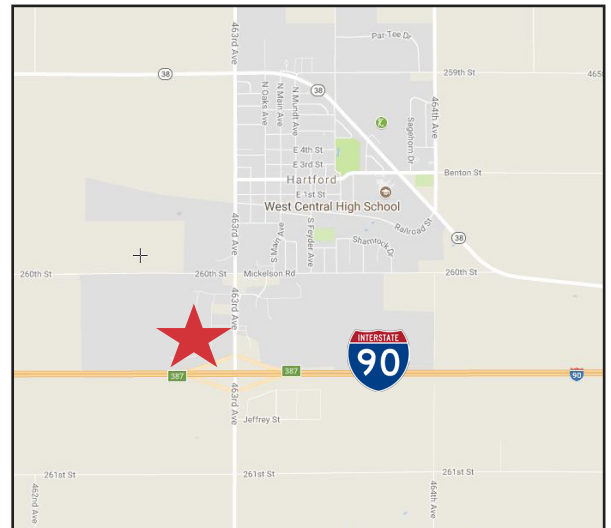
- 1 - Unplatted Size: 78,408 sq. ft. (1.8 acres)
- 2 - Block 1 Lot 1 Size: 52,498 sq. ft. (1.20 acres)
- Zoning: CC - Community Commercial
- One or more owners are licensed real estate brokers in the State of South Dakota

Price

- 1 - Unplatted List Price: \$352,836 (\$4.50/ sq. ft.)
- 2 - Block 1 Lot 1 List Price: \$236,241 (\$4.50/ sq. ft.)

Location

- Located just north of I-90 in Hartford, SD off Exit 387
- Area neighbors include: Gillespie Outdoor Power Equipment, Brisk RV Sales, Coffee Cup Fuel Stop, Tammen Auto & Tire



Craig Hagen, CCIM, SIOR

605 444 7115 Office

605 310 4227 Cell

chagen@naisiouxfalls.com

NO WARRANTY OR REPRESENTATION, EXPRESS OR IMPLIED, IS MADE AS TO THE ACCURACY OF THE INFORMATION CONTAINED HEREIN, AND THE SAME IS SUBMITTED SUBJECT TO ERRORS, OMISSIONS, CHANGE OF PRICE, RENTAL OR OTHER CONDITIONS, PRIOR SALE, LEASE OR FINANCING, OR WITHDRAWAL WITHOUT NOTICE, AND OF ANY SPECIAL LISTING CONDITIONS IMPOSED BY OUR PRINCIPALS NO WARRANTIES OR REPRESENTATIONS ARE MADE AS TO THE CONDITION OF THE PROPERTY OR ANY HAZARDS CONTAINED THEREIN ARE ANY TO BE IMPLIED.

2500 W 49th Street Suite 100

Sioux Falls, SD 57105

+1 605 357 7100

naisiouxfalls.com

For Sale
Commercial Land
 Hartford, SD

Subject Properties

Opal Lane

S. Western Ave.

Brisk RV Sales

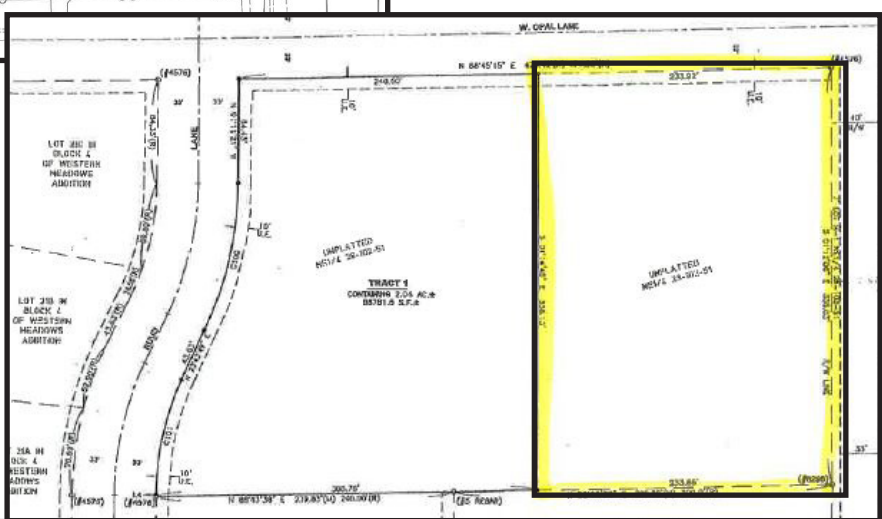
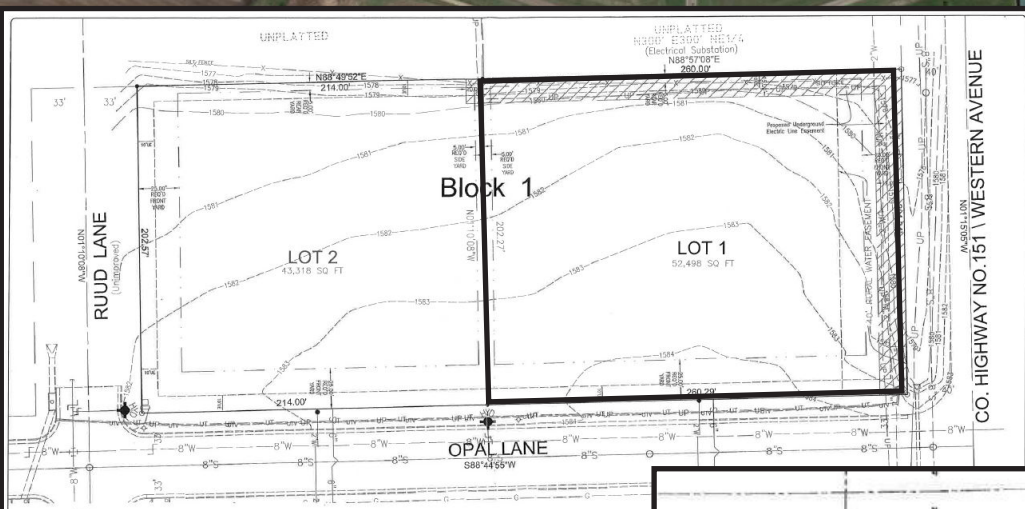
Gillespie
 OUTDOOR POWER EQUIPMENT

COFFEE CUP
 FUEL STOP

AmericInn
 HOTEL & SUITE



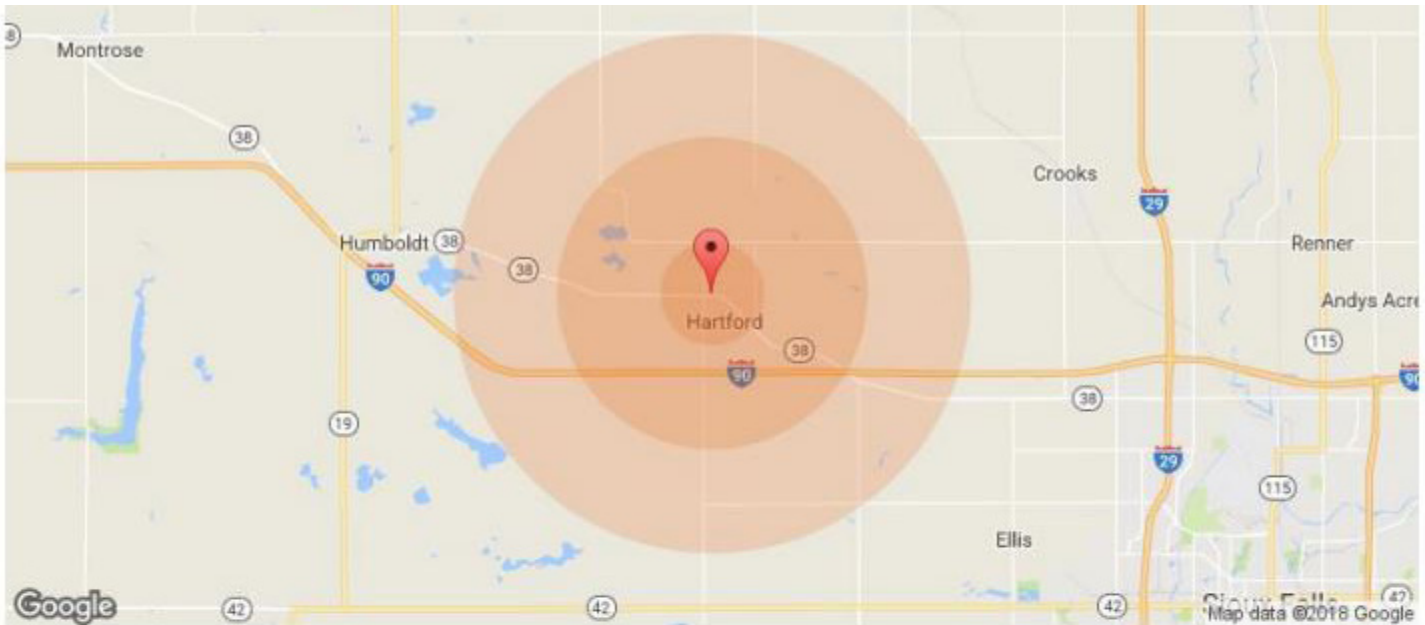
Exit 387



2500 W 49th Street Suite 100
 Sioux Falls, SD 57105
 +1 605 357 7100
naisiouxfalls.com



For Sale
Commercial Land
 Hartford, SD



<u>Population Characteristic</u>	<u>1 Mile</u>	<u>3 Mile</u>	<u>5 Mile</u>	<u>Household Income</u>	<u>1 Mile</u>	<u>3 Mile</u>	<u>5 Mile</u>
Ages 0-4	215	215	321	Median Household Income	\$59,452	\$59,452	\$63,799
Ages 5-9	274	274	408	< \$10000	20	20	33
Ages 10-14	286	286	418	\$10000-\$14999	52	52	58
Ages 15-19	295	295	433	\$15000-\$19999	49	49	66
Ages 20-24	277	277	425	\$20000-\$24999	70	70	80
Ages 25-29	231	231	368	\$25000-\$29999	60	60	69
Ages 30-34	208	208	323	\$30000-\$34999	37	37	37
Ages 35-39	191	191	287	\$35000-\$39999	90	90	132
Ages 40-44	201	201	308	\$40000-\$44999	52	52	124
Ages 45-49	234	234	358	\$45000-\$49999	41	41	73
Ages 50-54	225	225	356	\$50000-\$60000	119	119	186
Ages 55-59	201	201	330	\$60000-\$74000	127	127	217
Ages 60-64	164	164	285	\$75000-\$99999	280	280	361
Ages 65-69	127	127	205	\$100000-\$124999	133	133	216
Ages 70-74	70	70	125	\$125000-\$149999	36	36	93
Ages 75-79	42	42	77	\$150000-\$199999	13	13	25
Ages 80-84	29	29	45	> \$200000	13	13	61
<u>Race Characteristic</u>	<u>1 Mile</u>	<u>3 Mile</u>	<u>5 Mile</u>	<u>Characteristic Housing</u>	<u>1 Mile</u>	<u>3 Mile</u>	
Non Hispanic White	3,288	3,288	5,108	Housing Units	1,138	1,138	
Population Black	7	7	7	Occupied Housing Units	1,099	1,099	
Population Am In/AK Nat	10	10	17	Owner Occupied Housing Units	869	869	
				Renter Occupied Housing Units	230	230	