

TWENTY-FOUR MILE ROAD CHESTERFIELD TWP., MICHIGAN

VACANT LAND FOR SALE
4.00 – 42.00 Acres Available

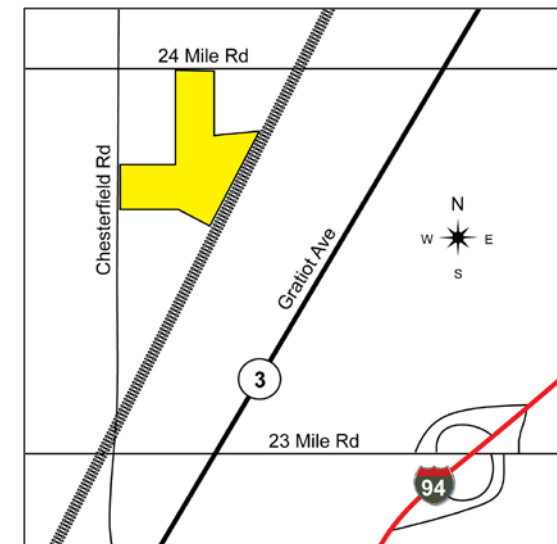


BUILD-TO-SUIT OPPORTUNITY



PROPERTY FEATURES

- 4.00 – 42.00 acres available
- M-2 Zoning
- Sale Price: \$3,990,000 (\$95,000/acre)
- New industrial development
- Terms: Cash or terms acceptable to seller



For more information, please contact:

PETER WALOCKO
(248) 948 0106

pwalocko@signatureassociates.com

BEN WILKIEMEYER
(248) 359 0624

bwilkiemeyer@signatureassociates.com

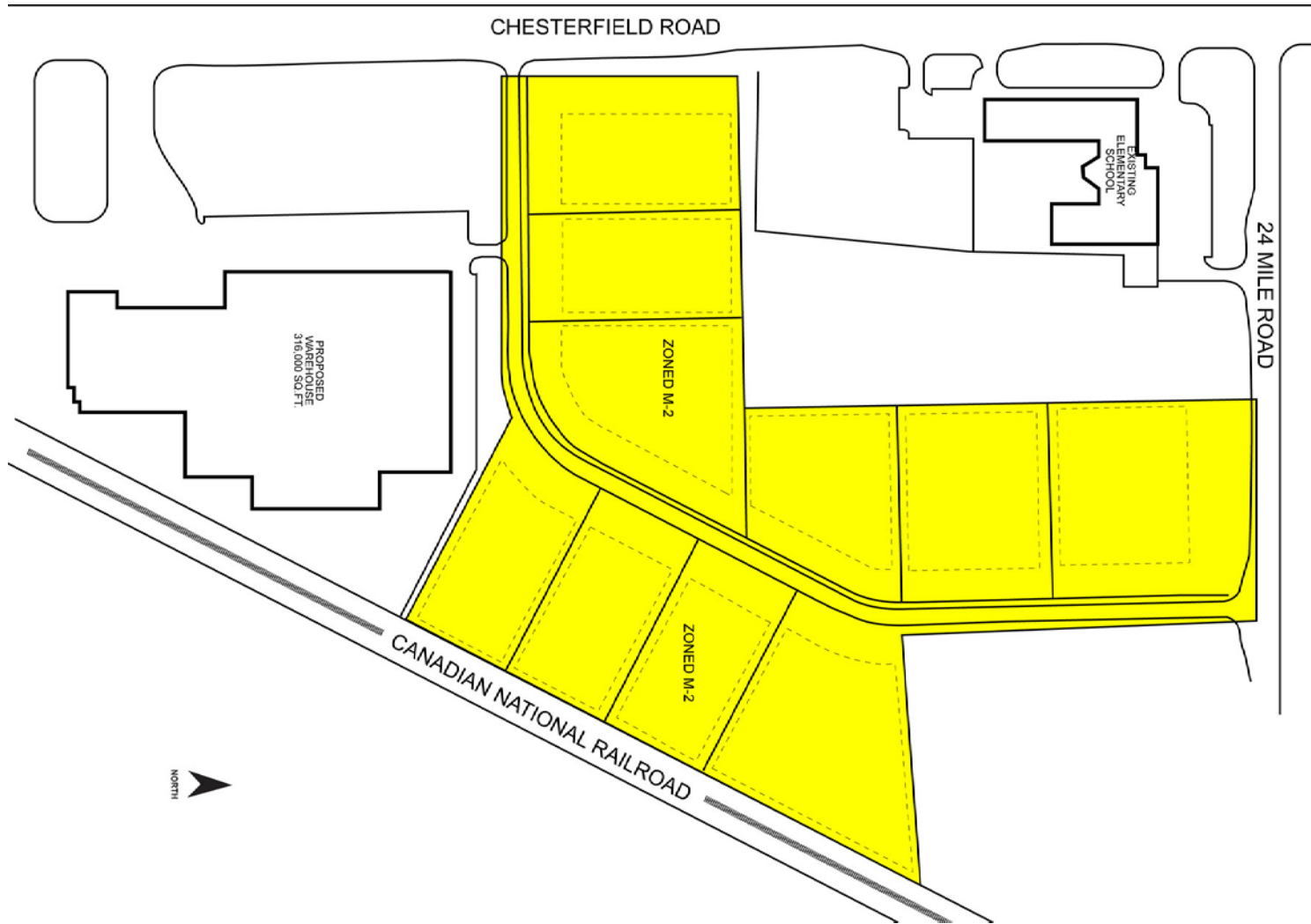
SIGNATURE ASSOCIATES
One Towne Square, Suite 1200
Southfield, MI 48076
www.signatureassociates.com

Twenty-Four Mile Road – Chesterfield Twp., Michigan

Vacant Land For Sale

4.0 -42.0
Acres
AVAILABLE

Site Plan



For more information, please contact:

PETER WALOCKO

(248) 948 0106

pwalocko@signatureassociates.com

BEN WILKIEMEYER

(248) 359 0624

bwilkiemeyer@signatureassociates.com

SIGNATURE ASSOCIATES

One Towne Square, Suite 1200

Southfield, MI 48076

www.signatureassociates.com