



FOR SALE OR LEASE

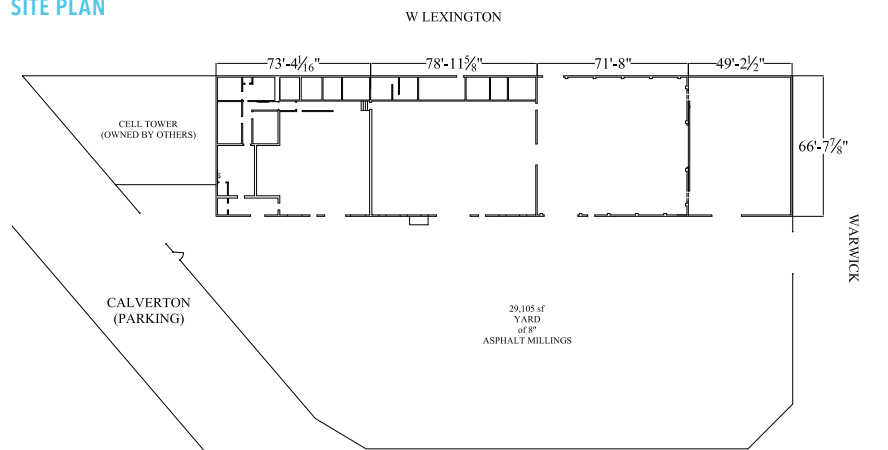
# 2501 W. LEXINGTON STREET

BALTIMORE, MARYLAND 21223

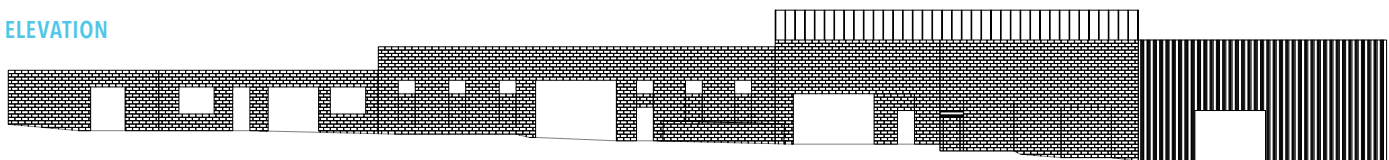




## SITE PLAN



## ELEVATION



## PROPERTY HIGHLIGHTS

- Land Area: ±1.00 acres
- Building Size: ±18,000 square feet
- Office Space: ±3,000 square feet
- Seven (7) ton crane
- Zoned: I-1
- Clear Height: 20'
- Loading: Four (4) oversized drive-in doors
- 277/480 volt, 3 phase, 4 wire, 800 amp service
- Enterprise Zone designation
- HUBZone qualified

## INFORMATION

**Brian Siegel**  
 443.285.7661  
 brian.siegel@transwestern.com

7160 Columbia Gateway Drive  
 Suite 210  
 Columbia, Maryland 21046  
 443.285.0770  
 www.transwestern.com

