

2702 N. PERRY— SPOKANE, WASHINGTON

FOR LEASE

BUILDING FOR LEASE ALL OR PART



MAIN LEVEL—3,420 SF

- Office 1,288 RSF
- Shop/Warehouse 1,071 RSF
- Shop/Garage 938 RSF

UPPER LEVEL—3,562 SF

- Office Space: \$9.00/SF, NNN
- Shop/Warehouse/Garage: \$6.00/SF, NNN
- Entire Building: \$4,550 per month, NNN

- Good visibility at Perry & Buckeye
- Partially Furnished
- Good Parking



CONTACT

Michael J. Mathis
Commercial Leasing &
Sales
509.755.7516 ~ Direct
509.458.4014 ~ Fax
michael.mathis@khco.com

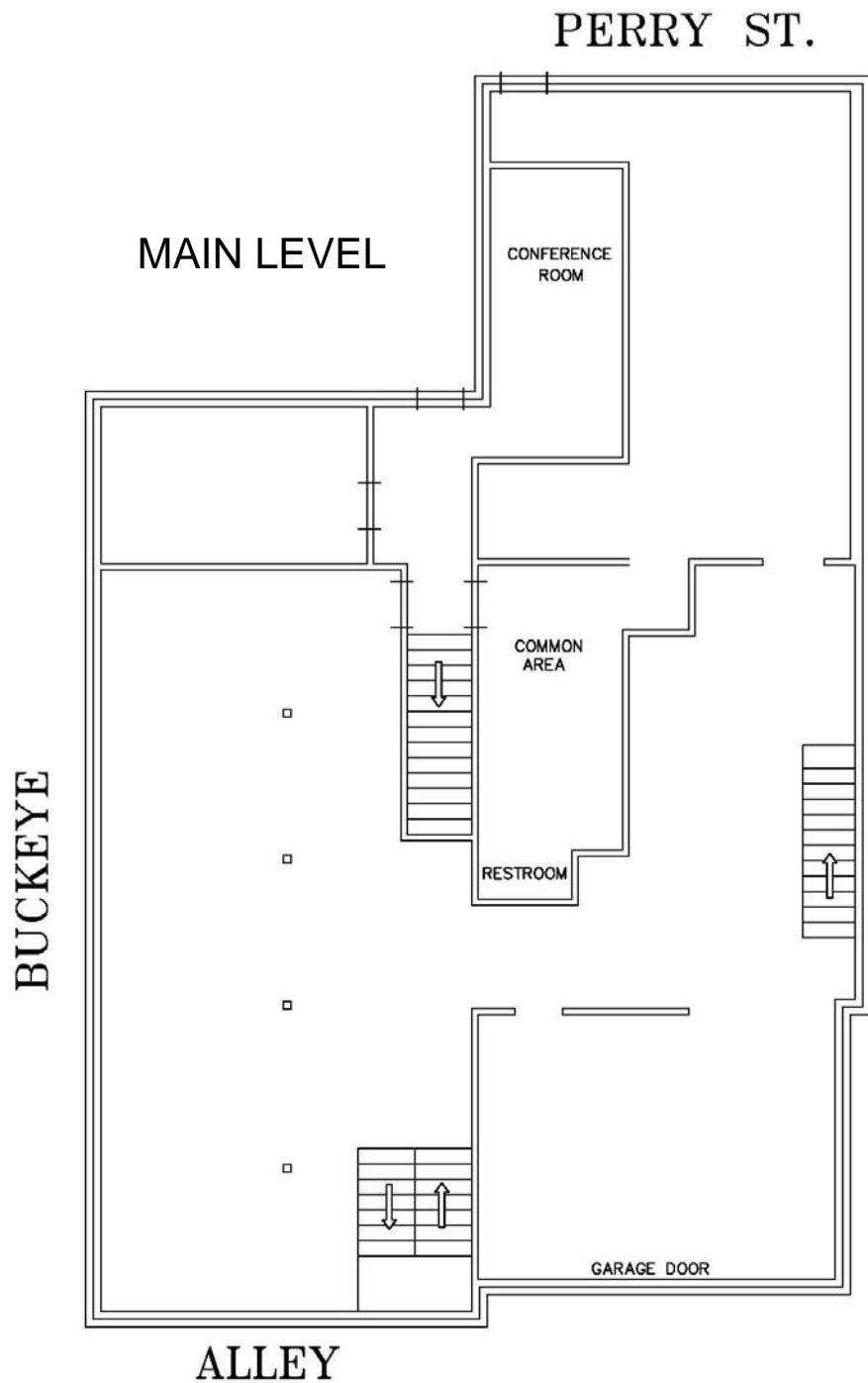
601 W. Main Ave.
Suite 400
Spokane, WA 99201
Main Phone:
509.838.6541
Fax: 509.458.4014
khco.com

The Real Estate Professionals

**KIEMLE &
HAGOOD
COMPANY**

No warranty or representation, expressed or implied, is made by Kiemle & Hagood Company, its agents or its employees as to the accuracy of the information contained herein. All information furnished is from sources deemed reliable and submitted subject to errors, omissions, change of terms and conditions, prior sale, lease or financing, or withdrawal without notice. No one should rely solely on the above information, but instead should conduct their own investigation to independently satisfy themselves.

FLOOR PLANS



CONTACT

Michael J. Mathis
Commercial Leasing &
Sales
509.755.7516 ~ Direct
509.458.4014 ~ Fax
michael.mathis@khco.com

601 W. Main Ave.
Suite 400
Spokane, WA 99201
Main Phone:
509.838.6541
Fax: 509.458.4014
khco.com



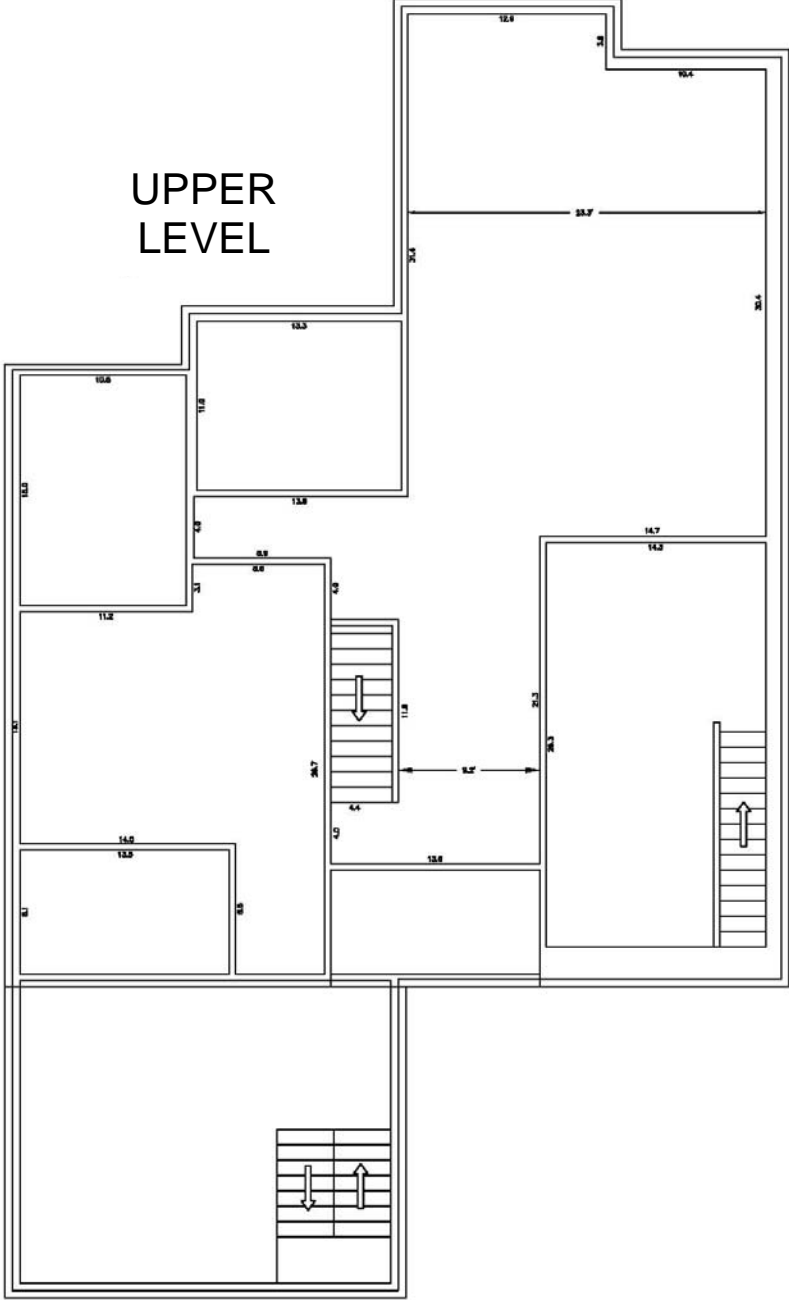
No warranty or representation, expressed or implied, is made by Kiemle & Hagood Company, its agents or its employees as to the accuracy of the information contained herein. All information furnished is from sources deemed reliable and submitted subject to errors, omissions, change of terms and conditions, prior sale, lease or financing, or withdrawal without notice. No one should rely solely on the above information, but instead should conduct their own investigation to independently satisfy themselves.

FLOOR PLANS

BUCKEYE

UPPER
LEVEL

PERRY ST.



ALLEY

CONTACT

Michael J. Mathis
 Commercial Leasing &
 Sales
 509.755.7516 ~ Direct
 509.458.4014 ~ Fax
 michael.mathis@khco.com

601 W. Main Ave.
 Suite 400
 Spokane, WA 99201
 Main Phone:
 509.838.6541
 Fax: 509.458.4014
 khco.com



No warranty or representation, expressed or implied, is made by Kiemle & Hagood Company, its agents or its employees as to the accuracy of the information contained herein. All information furnished is from sources deemed reliable and submitted subject to errors, omissions, change of terms and conditions, prior sale, lease or financing, or withdrawal without notice. No one should rely solely on the above information, but instead should conduct their own investigation to independently satisfy themselves.