



Located off State Route 315 on Olentangy River Road, University City provides area retailers little competition within a five-mile radius and consumers enjoy a convenient shopping alternative in an underserved market, including Ohio State University.

Conveniently located within approximately a 5 to 10-minute drive time from the following neighborhoods/districts: Upper Arlington, Grandview Heights, Short North Arts District, Clintonville, University District and Arena District.

SURROUNDING AREA HIGHLIGHTS

Buckeye Village

- OSU's newest housing development with 450 new apartment units
- Targeted for students with families and grad students

OhioHealth Headquarters

www.dispatch.com/news/20170723/work-to-start-on-ohiohealths-89-million-headquarters-near-riverside

- 270,000 s.f. · 1,600 employees
- Committed to an additional 900 employees in the area for a total of 2,500

Ohio State University

- 138,766 Students, faculty & staff
- 3RD largest public university enrollment in U.S.

SIZE

+/- 121,455 square feet
266 residential units

LOCATION

Columbus, Ohio
Olentangy River Road just north of
Ackerman Road

TRAFFIC COUNTS

Olentangy River Road - 16,000
SR-315 - 105,000
Ackerman Road - 21,984

KEY DEMOGRAPHICS

5-MILE RADIUS

POPULATION

Current Estimated Population	357,399
Projected Population (5 Years)	379,135
2010 Census Population	316,902

HOUSEHOLDS

Current Estimated Households	155,468
Projected Households (5 Years)	165,008
2010 Census Households	138,068

INCOME

Average Household Income	\$74,528
Household Income \$50,000+	51.3%

MEDIAN AGE

34 years

DAYTIME DEMOGRAPHICS

Number of Businesses	20,156
Number of Employees	425,522
Total Daytime Population	528,589

CONSUMER EXPENDITURES

Total Retail Expenditures	\$4.15 B
Per Household per Month	\$2,227



LEASING CONTACT

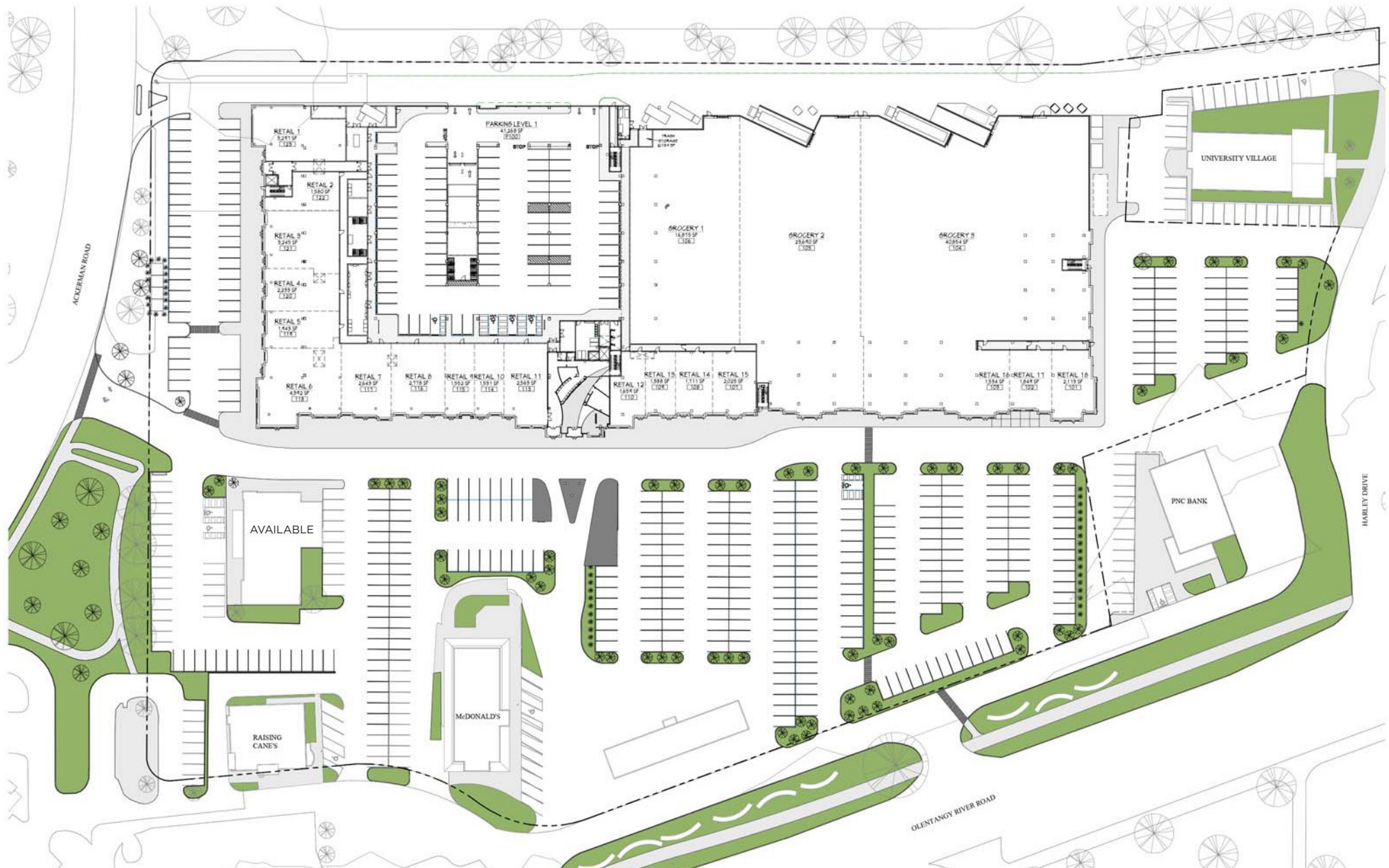
Sydney Federer

614.227.3477 DIRECT
614.228.5331 OFFICE
SAndrewsFederer@castoinfo.com



250 Civic Center Drive, Suite 500
Columbus, Ohio 43215

www.castoinfo.com



Conceptual Plan - Building and unit sizes and configurations are subject to change.

