



SUITE 150 - 829 SF

MCDOWELL BUILDING | 3717 NATIONAL DRIVE, RALEIGH, NC

PROPERTY FEATURES

- ▶ Available now!
- ▶ Flexible lease options
- ▶ \$23.50/SF full-service
- ▶ Upfit negotiable
- ▶ Ample free parking
- ▶ Located just inside the beltline on Glenwood Avenue
- ▶ 10 minutes from downtown Raleigh
- ▶ Minutes from RTP and RDU International Airport
- ▶ Connection to the City of Raleigh Greenway
- ▶ Sommelier's Roast Café in 3700 Glenwood
- ▶ Conference center and branch bank all located within the office park
- ▶ Tree-lined street with sidewalks connecting the buildings
- ▶ On-site professional property management

GLENWOOD PLACE

When it's all about location.

Conveniently positioned along Glenwood Avenue, just inside the I-440 beltline, Glenwood Place currently contains everything you need for your workday, minutes from everything else. The 40-acre community encompasses nine commercial office buildings housing over 100 tenants and 296 upscale residential dwelling units, as well as 20,000 square feet of service retail.

This premium location is a 15-minute commute to the Raleigh-Durham International Airport, five minutes to world-class shopping and dining at Crabtree Valley Mall, North Hills, Cameron Village Shopping Center, and Glenwood South.



MCKENZIE WILSON
mwilson@grubbventures.com
919.786.9905



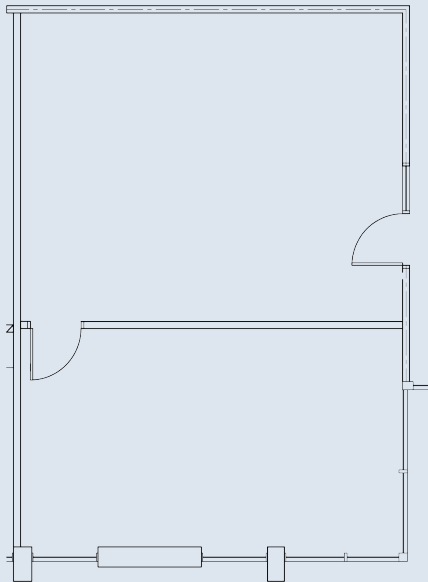
SITE MAP



MCDOWELL BUILDING
Suite 211 — 829 SF

BUILDING NAME	ADDRESS
Camden	3724 National Drive
Cumberland	3739 National Drive
Dare	3733 National Drive
McDowell	3717 National Drive
Northampton	3725 National Drive
3700 Glenwood	3700 Glenwood Ave.

FLOOR PLAN



KEY PLAN

