

For Sale

Land

350 E. North Avenue

Lombard, IL 60148



- 3.31 acres available for sale just off the corner of North Avenue and Grace Street in Lombard, IL
- Heavy traffic volume along North Avenue
- Close proximity to I-355 and I-83
- Area tenants include CVS, Starbucks, Jimmy John's, McDonald's, Dunkin Donuts, Bank of America, Aldi, Portillo's and Target

DEMOGRAPHIC SUMMARY			
	RADIUS		
	1 MILE	3 MILES	5 MILES
AVERAGE HHI	\$96,859	\$91,448	\$100,318
DAYTIME POPULATION	12,274	84,469	285,988
RESIDENTIAL POPULATION	9,065	104,743	302,265
TRAFFIC COUNTS			
E. NORTH AVENUE	41,600 VPD		

Doug Renner
 312.275.3137
 doug.renner@baumrealty.com

Mark Fredericks
 312.275.3109
 mark@baumrealty.com

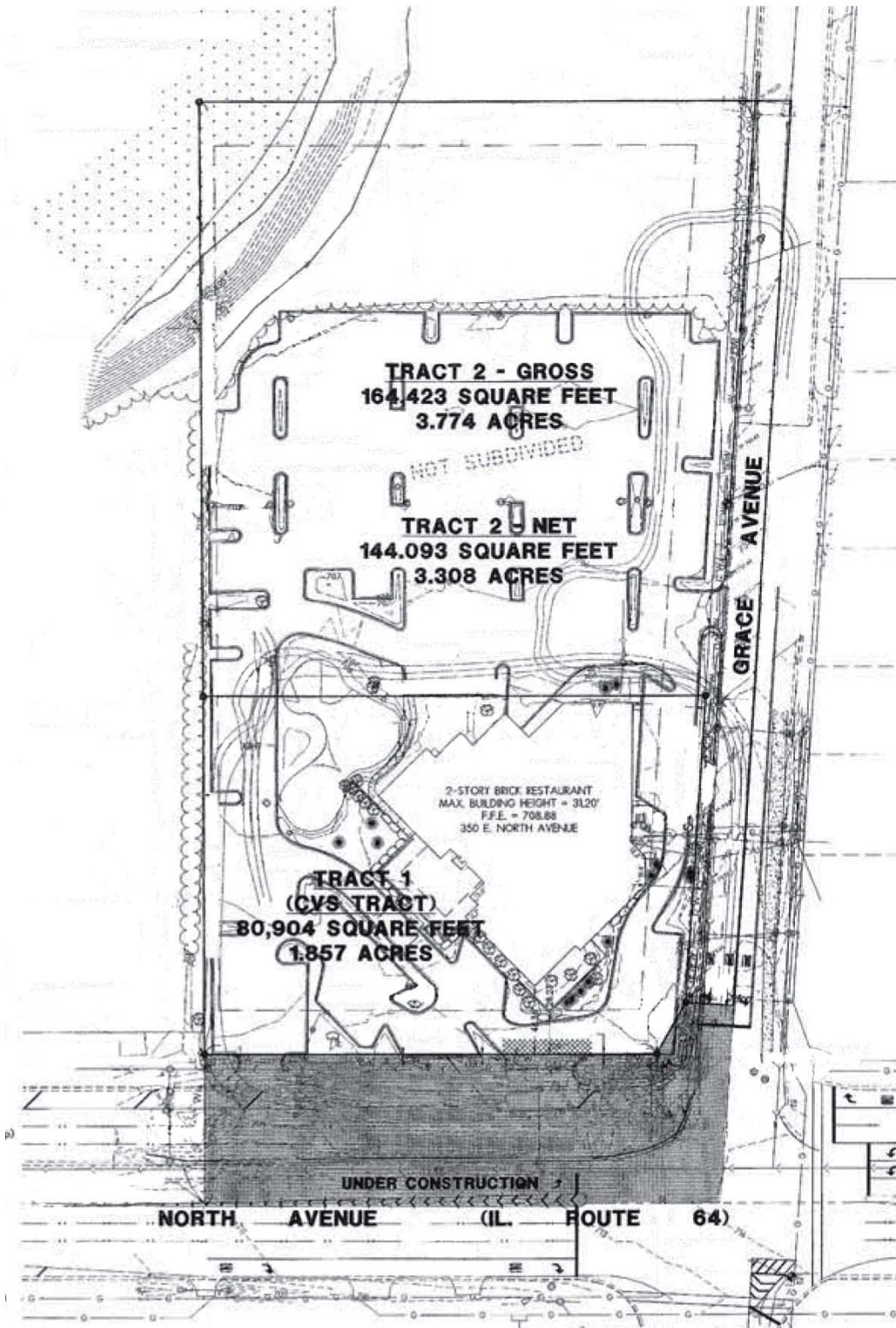


For Sale

Land

350 E. North Avenue

Lombard, IL 60148



Doug Renner
312.275.3137
doug.renner@baumrealty.com

Mark Fredericks
312.275.3109
mark@baumrealty.com





Baum Realty Group
 1030 W. Chicago Ave.
 Chicago, IL 60642
 312.666.3000
 www.baumrealty.com

350 E. North Avenue Lombard, IL

