



FOR LEASE:

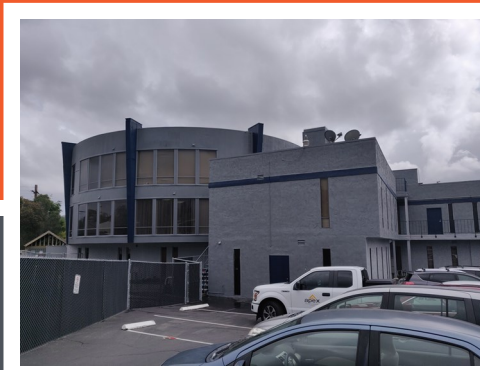
**7484 UNIVERSITY AVE
LA MESA, CA 91942**

SUITE 210—817 SF

SUITE 300—876 SF

DETAILS:

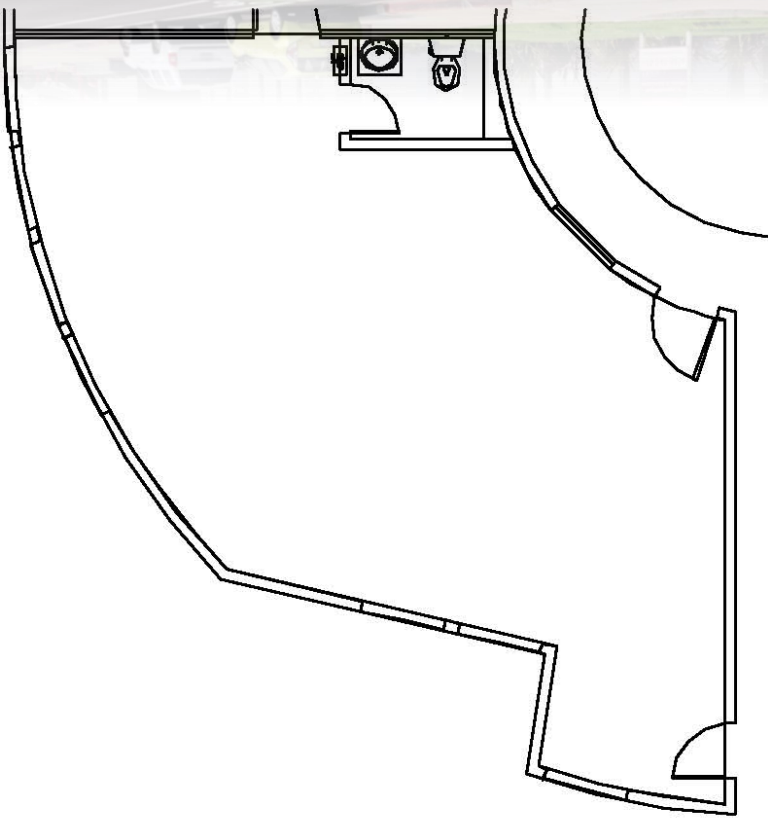
Don't miss out on these professional offices near the heart of La Mesa at La Mesa Landmark. Each available suite features open layouts with in-suite restrooms. Enjoy nice views with floor to ceiling glass and excellent natural light. The property benefits from a unique circular layout and central atrium. There is an elevator servicing all floors and onsite parking is available. Building has recently received new exterior paint for a clean and professional look. Call for additional details





**7484 UNIVERSITY AVE
LA MESA, CA 91942**

- SUITE 210
- SIZE: 817 SF
- RATE: \$1.25/SF + ELECTRIC
- OPEN OFFICE + RESTROOM
- FLOOR TO CEILING GLASS
- NEW EXTERIOR PAINT
- CALL FOR ADDITIONAL DETAILS!



PETER WRIGHT

Lic. #01846272

619-243-8450

pwright@qfcre.com

MICHAEL WOKULUK

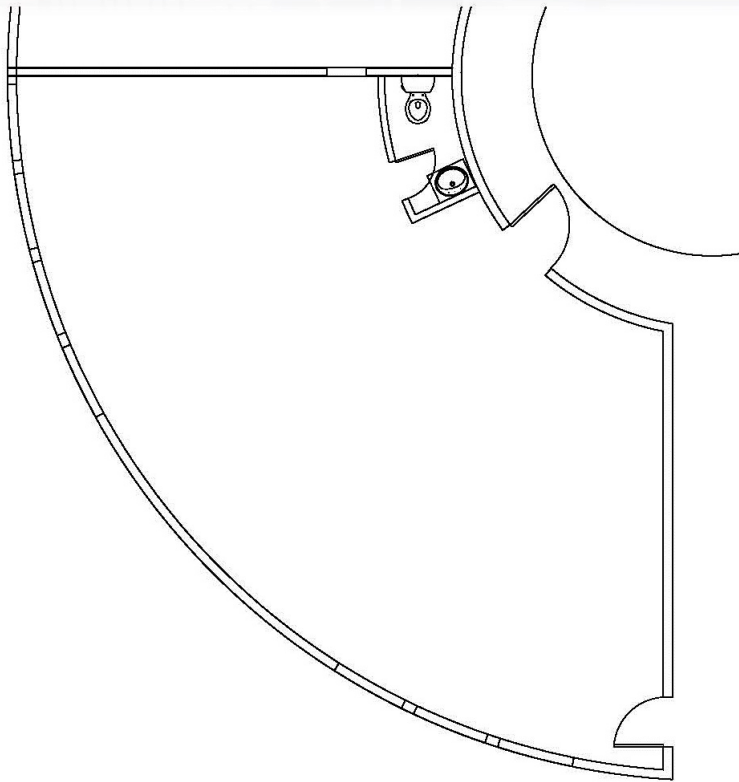
Lic. #01972342

619-243-8459

mwokuluk@qfcre.com



**7484 UNIVERSITY AVE
LA MESA, CA 91942**



- SUITE 300
- AVAILABLE FOR SUBLEASE
- SIZE: 876 SF
- RATE: \$1.22/SF + ELECTRIC
- LARGE OPEN AREA & RESTROOM
- FLOOR TO CEILING GLASS WINDOWS
- SUBLEASE THROUGH APRIL 30, 2021
- CALL FOR DETAILS



PETER WRIGHT

Lic. #01846272

619-243-8450

pwright@qfcre.com

MICHAEL WOKULUK

Lic. #01972342

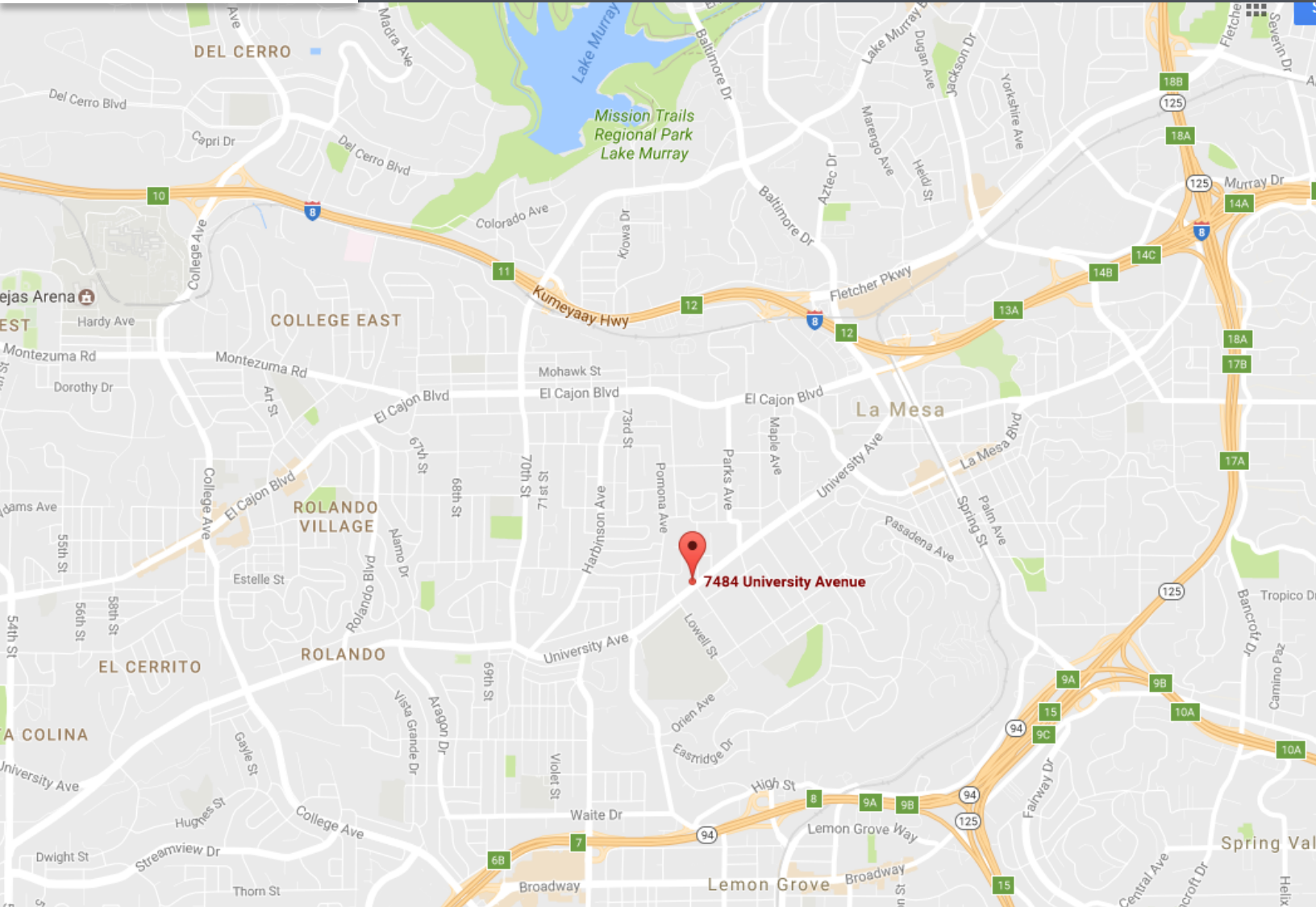
619-243-8459

mwokuluk@qfcre.com



LOCATION

7484 UNIVERSITY AVE LA MESA, CA 91942



The information contained herein has been obtained from sources considered to be reliable, but no guarantee of its accuracy is made by this company. In addition, no representation is made respecting zoning, condition of title, dimensions, or any matters of a legal or environmental nature. Such matters should be referred to legal counsel for determination. Terms and conditions are subject to change without prior notice. Subject to errors and omissions.



PETER WRIGHT

Lic. #01846272

619-243-8450

pwright@qfcre.com

MICHAEL WOKULUK

Lic. #01972342

619-243-8459

mwokuluk@qfcre.com