



400 E RED BRIDGE ROAD • KANSAS CITY, MO

PROPERTY DETAILS

Available Office Suites: 672 SF - 1,838 SF

Available Medical Suites: 951 SF - 1,581 SF

Competitive lease rates

Walking distance to Crow's Coffee, Sonic and Blue Moose

Excellent highway access to I-435

FOR MORE INFORMATION

ADAM ABRAMS, CCIM

D 816.876.2544

E AABRAMS@OPENAREA.COM

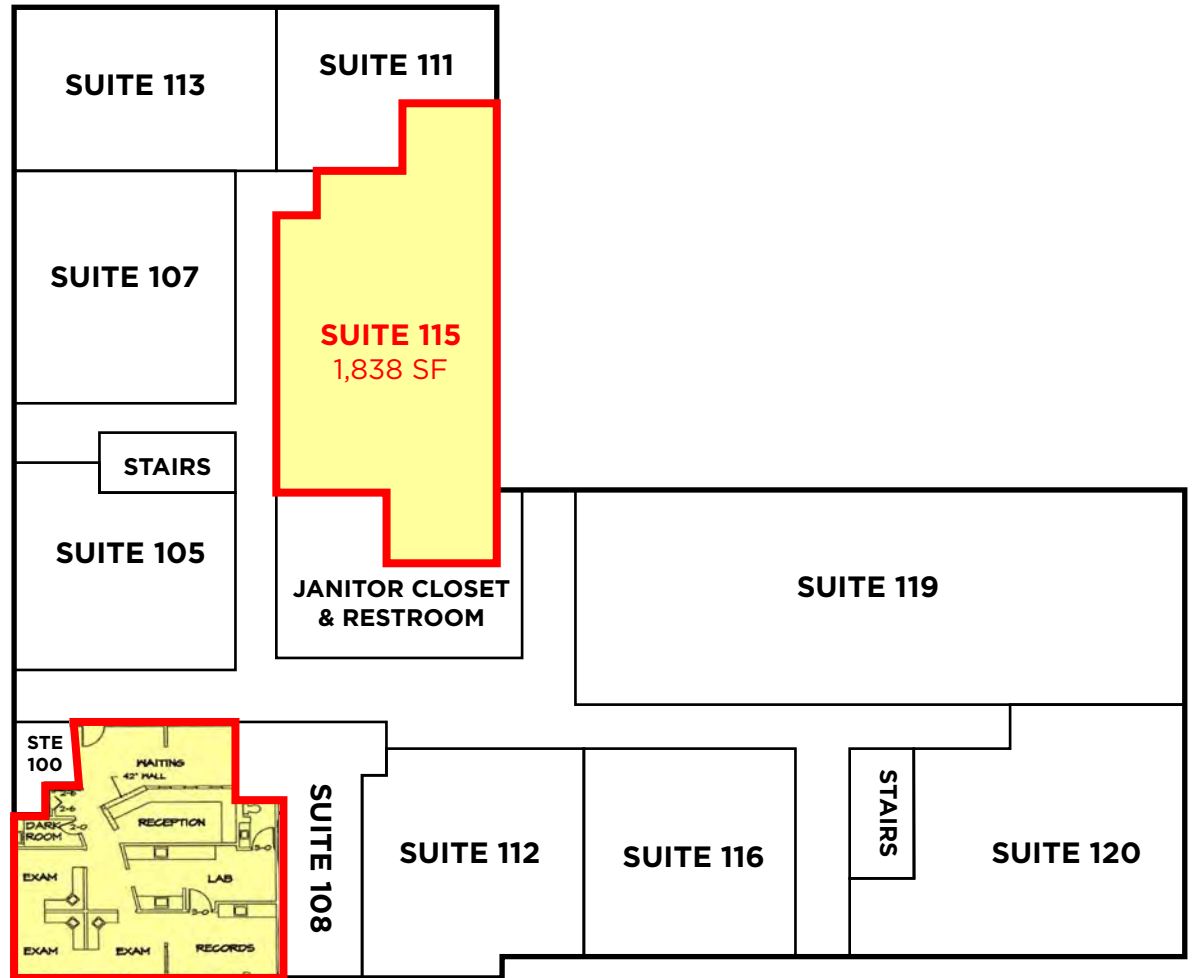
HANK SIMPSON

D 816.777.2859

E HSIMPSON@OPENAREA.COM

400 E RED BRIDGE

FIRST FLOOR

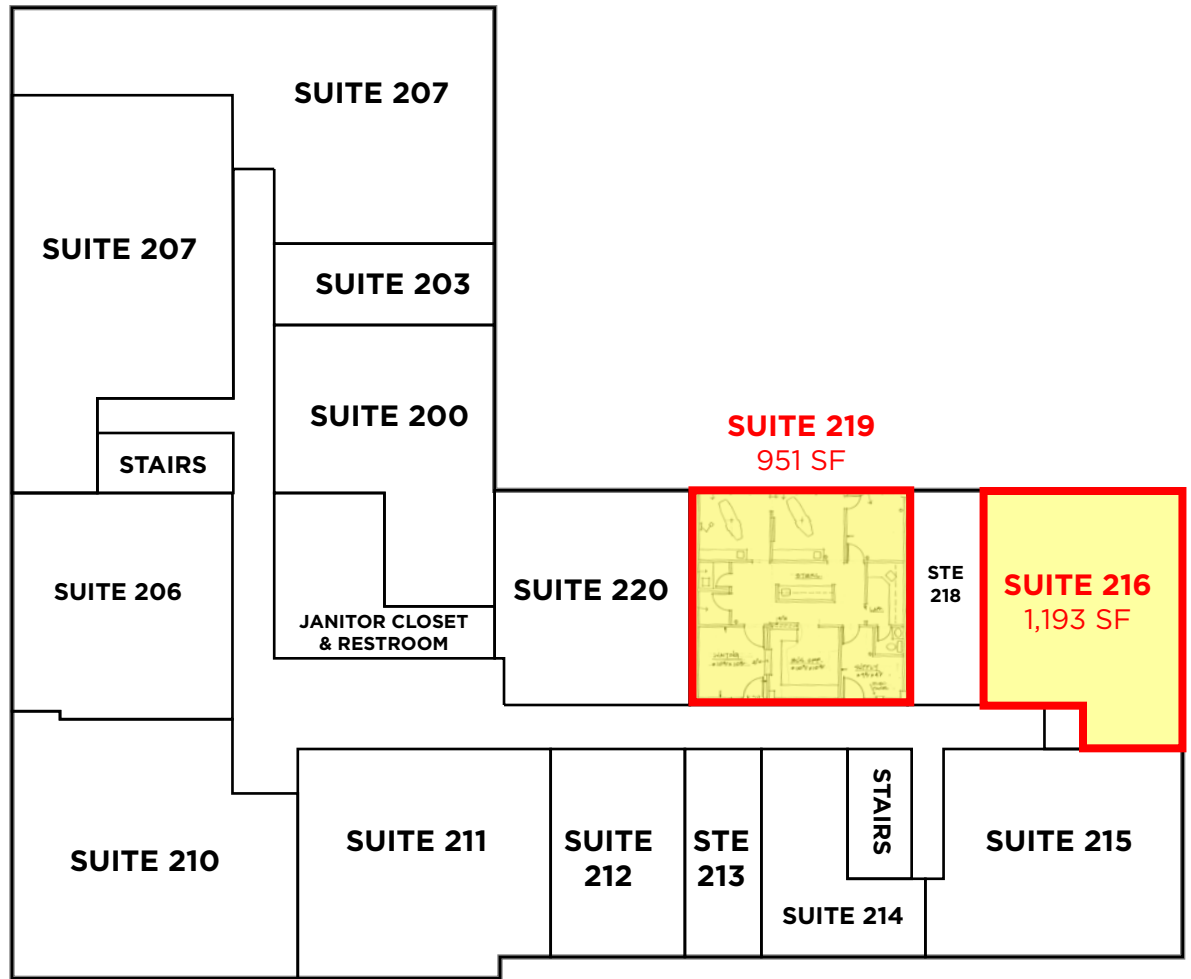


SUITE 102
1,376 SF

SUITE	SQUARE FOOTAGE
100, 107	1,296 SF
102 - VACANT	1,376 SF
105	952 SF
108	558 SF
111	700 SF
112	1,330 SF
113	997 SF
115 - VACANT	1,838 SF
116	1,059 SF
119	3,206 SF
120	1,570 SF

400 E RED BRIDGE

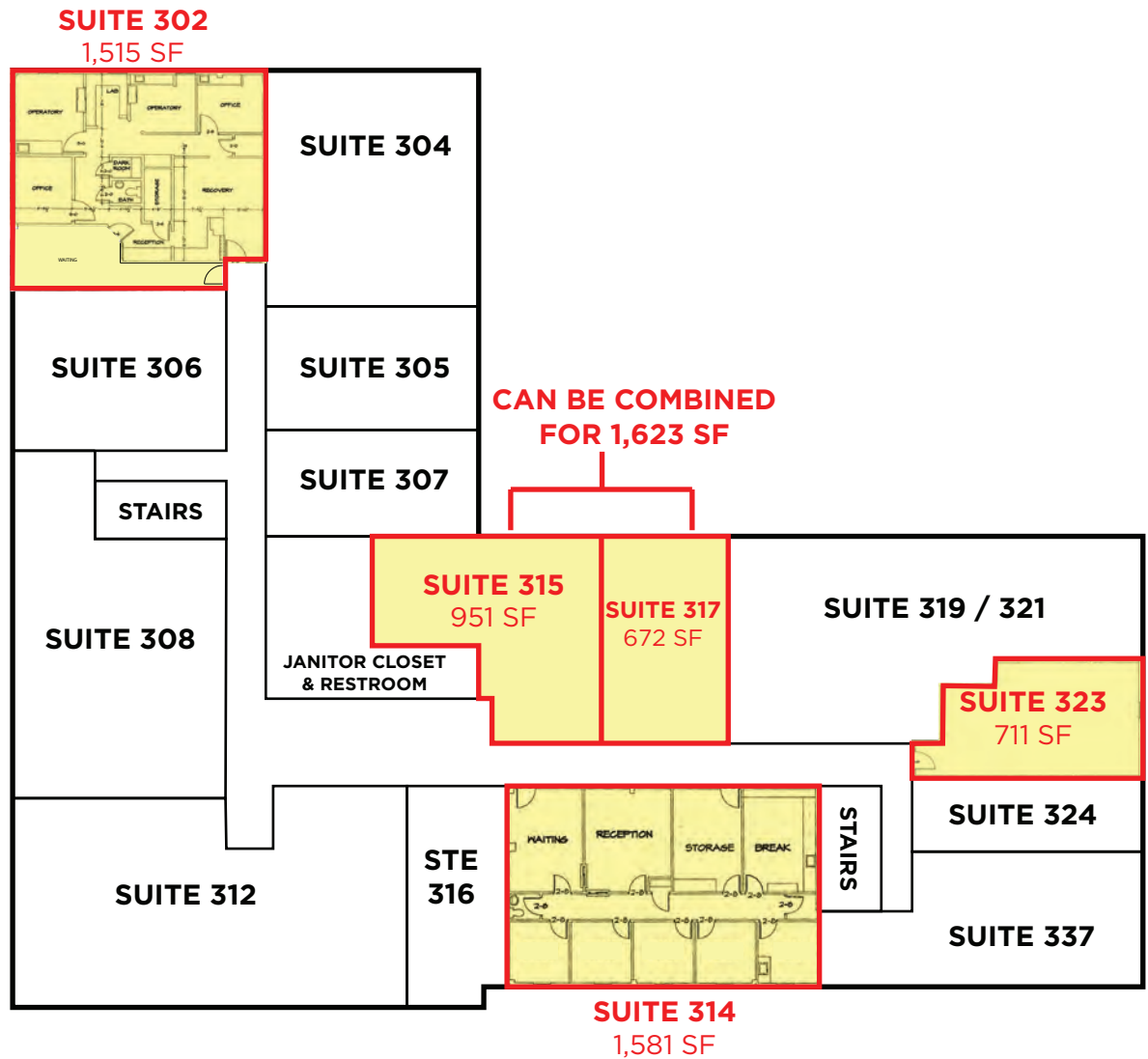
SECOND FLOOR



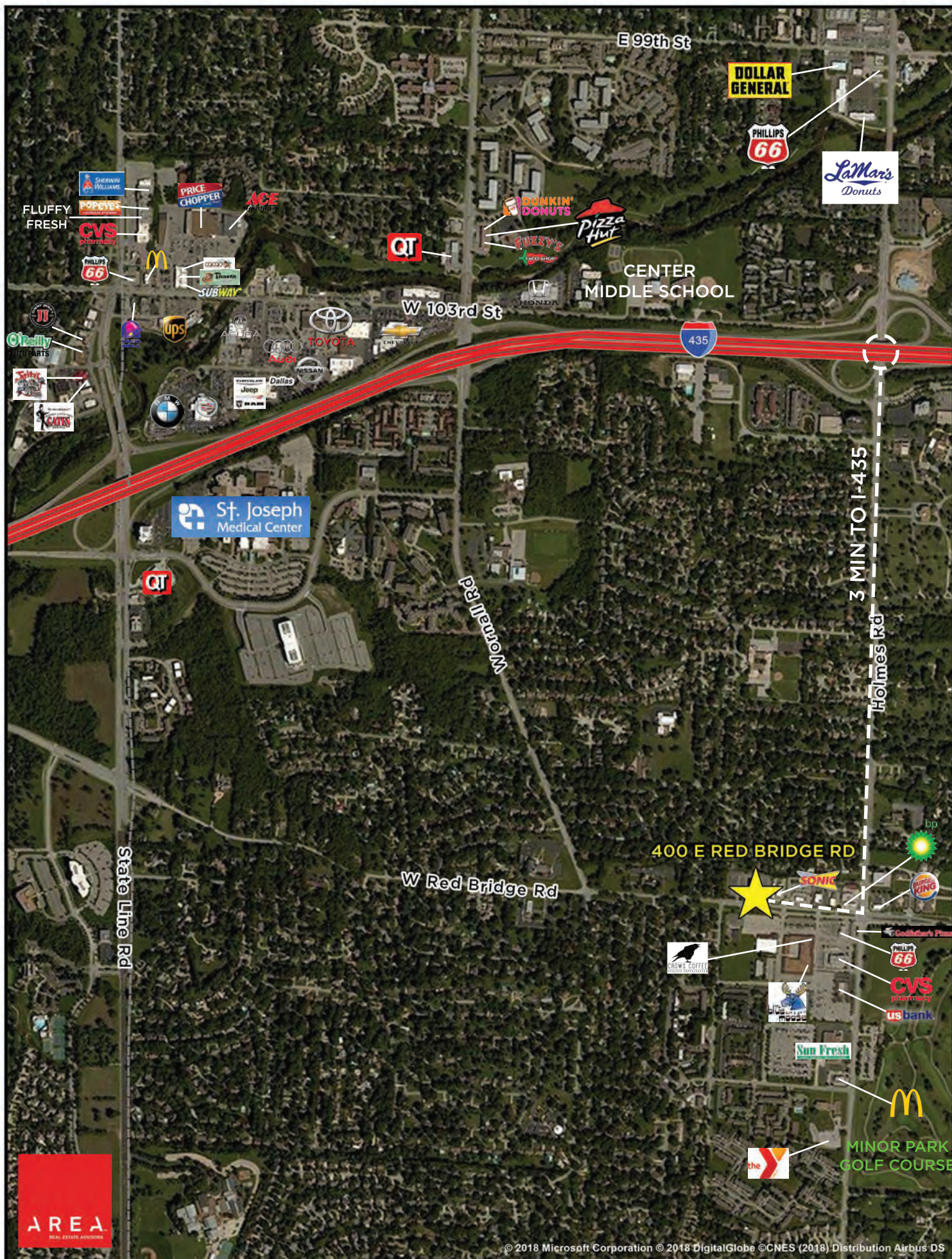
SUITE	SQUARE FOOTAGE
200	1,151 SF
203	399 SF
205	1,300 SF
206	1,234 SF
207	2,297 SF
210	1,686 SF
211	1,298 SF
212	738 SF
213	363 SF
214	563 SF
215	1,167 SF
216 - VACANT	1,193 SF
218	382 SF
219 - VACANT	951 SF
220	955 SF

400 E RED BRIDGE

THIRD FLOOR



SUITE	SQUARE FOOTAGE
302 - VACANT	1,515 SF
304	1,284 SF
305	654 SF
306	840 SF
307	560 SF
308	1,600 SF
312	1,985 SF
314 - VACANT	1,581 SF
315 - VACANT	916 SF
316	504 SF
317 - VACANT	672 SF
319 / 321	1,586 SF
323 - VACANT	711 SF
324	433 SF
337	997 SF



AREA
REAL ESTATE ADVISORS