

DETAILS :

**Entire 6th Floor**  
8,000 RSF

**Sublease Term**  
Through Feb 27, 2022

**Possession**  
February 2019

**Asking Rent**  
Please Inquire



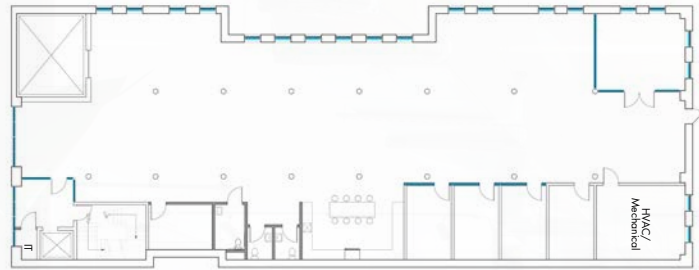
**419** LAFAYETTE STREET

OFFICE SPACE BETWEEN ASTOR PLACE & EAST 4TH STREET

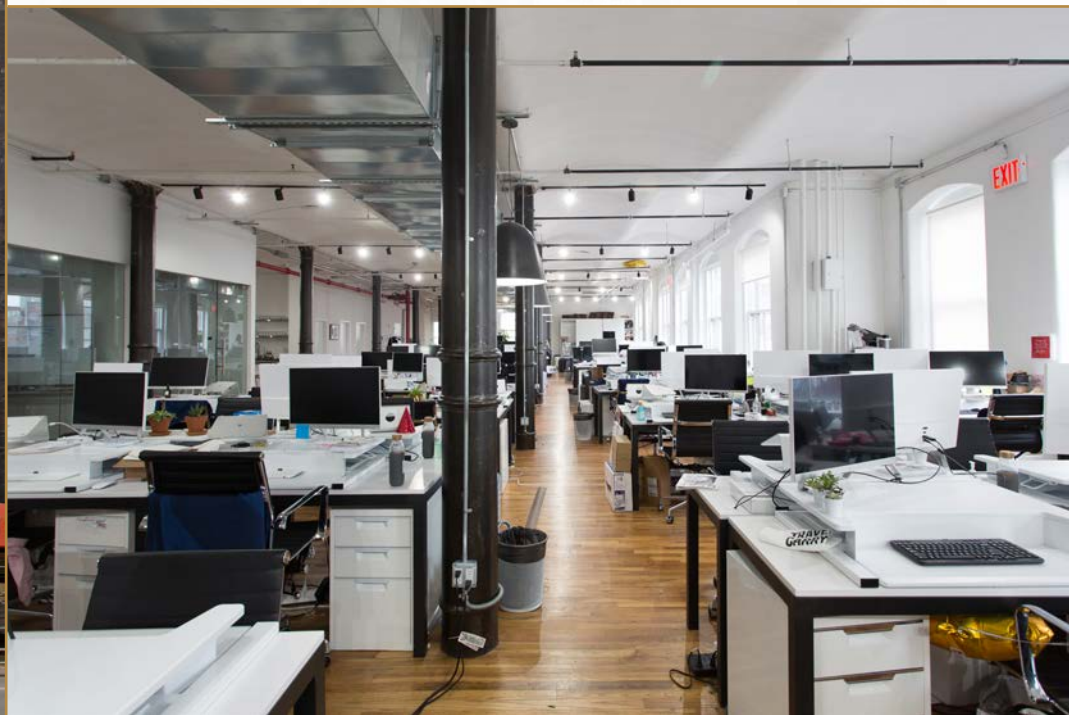


# NEIGHBORS :

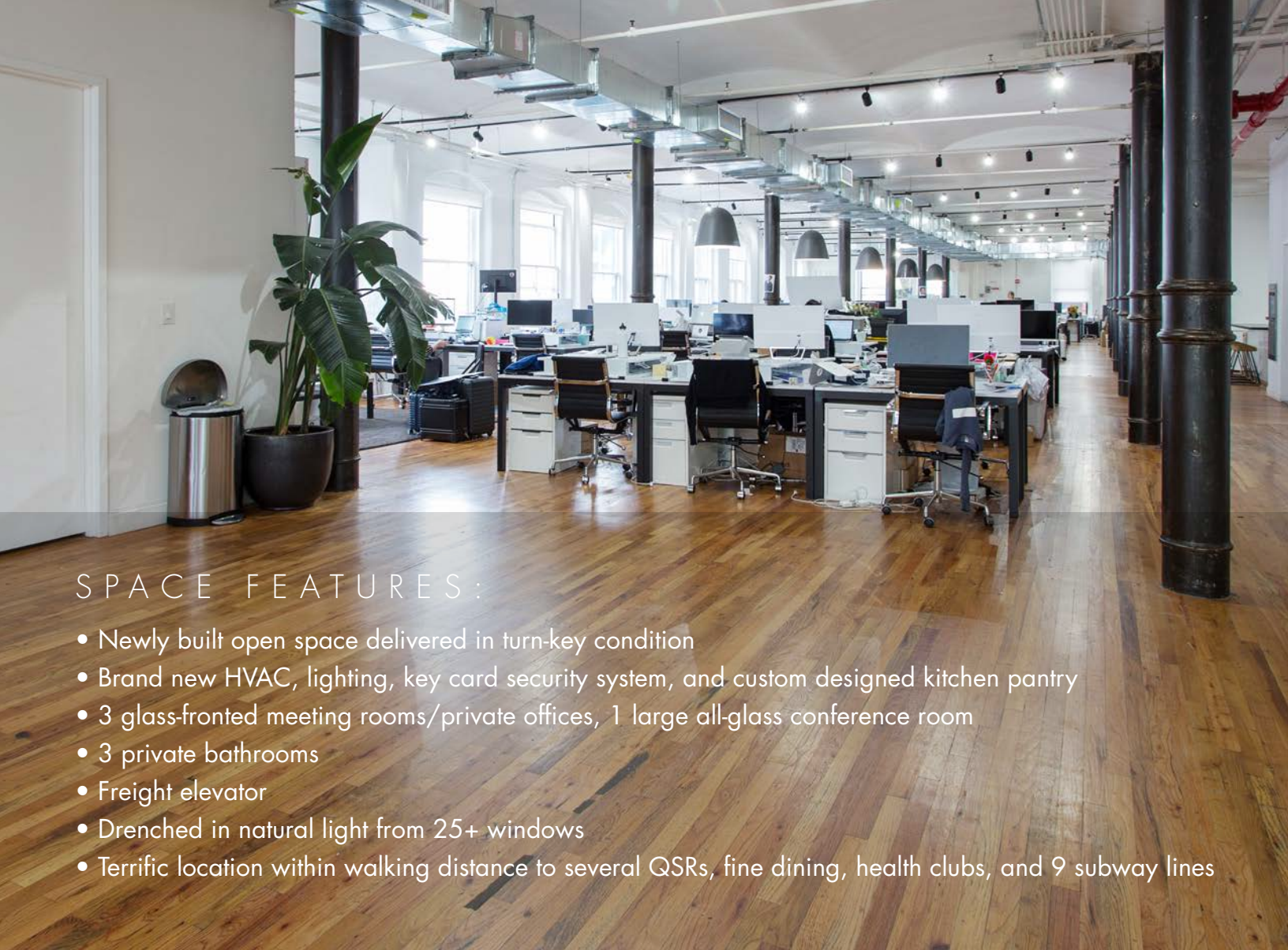
- Barry's Bootcamp
- La Colombe
- Walgreens
- Starbucks
- Shake Shack
- Flywheel
- Sweetgreen
- Chop't
- Honeybrains
- Indochine
- Atla
- Lafayette Grand Bakery
- New York Sports Club
- Equinox Bond Street
- Soul Cycle
- Bandier



Entire 6th Floor







## SPACE FEATURES:

- Newly built open space delivered in turn-key condition
- Brand new HVAC, lighting, key card security system, and custom designed kitchen pantry
- 3 glass-fronted meeting rooms/private offices, 1 large all-glass conference room
- 3 private bathrooms
- Freight elevator
- Drenched in natural light from 25+ windows
- Terrific location within walking distance to several QSRs, fine dining, health clubs, and 9 subway lines

## CONTACT:

**Christopher Owles**

212.604.9002

[chris@sinvin.com](mailto:chris@sinvin.com)

**Matthew Girard**

646.673.8776

[mgirard@sinvin.com](mailto:mgirard@sinvin.com)

 **SINVIN**  
COMMERCIAL REAL ESTATE & ADVISORY

