

For Lease

# 90 S. High - Suite E

Dublin, OH 43017



Office space for lease in the heart of historical downtown Dublin. Second level, free off street parking with easy ingress and egress from three sides of the building. Outdoor covered porch and grounds tenant retreats.



## *Details*

- 850 Square Feet
- \$1236/month
- monthly expenses  
\$128 avg (\$1.81/psf)
- utilities \$85 monthly
- Private Bath

*Christine Beckman*

Classical Realty Co.

Broker, CCIM, CPM®, GREEN One of 20 People to Know in Real Estate -Business First 2013

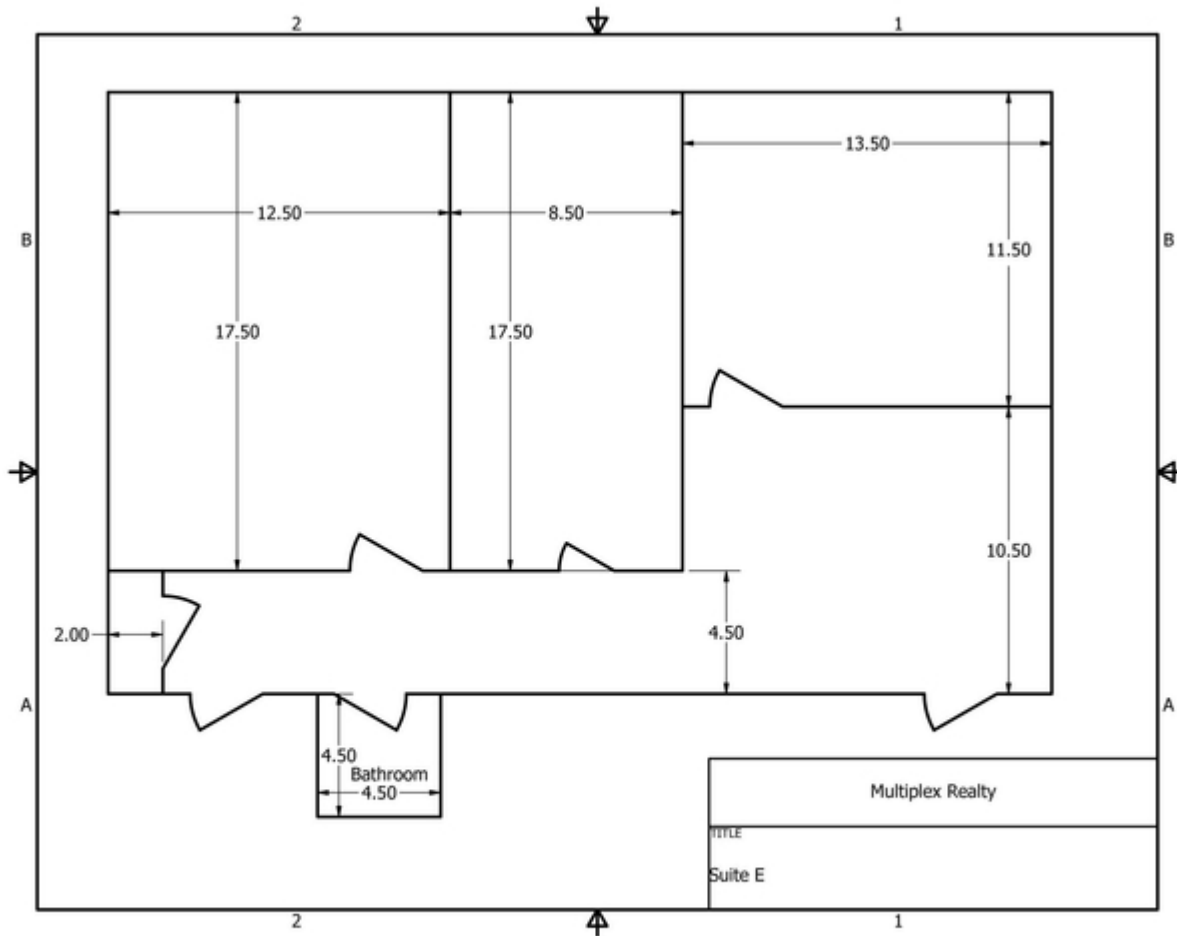
614-367-0668

[christineb@classicalrealty.com](mailto:christineb@classicalrealty.com)

For Lease

# 90 S. High - Suite E

Dublin, OH 43017



*Christine Beckman*

Classical Realty Co.

Broker, CCIM, CPM®, GREEN One of 20 People to Know in Real Estate -Business First 2013

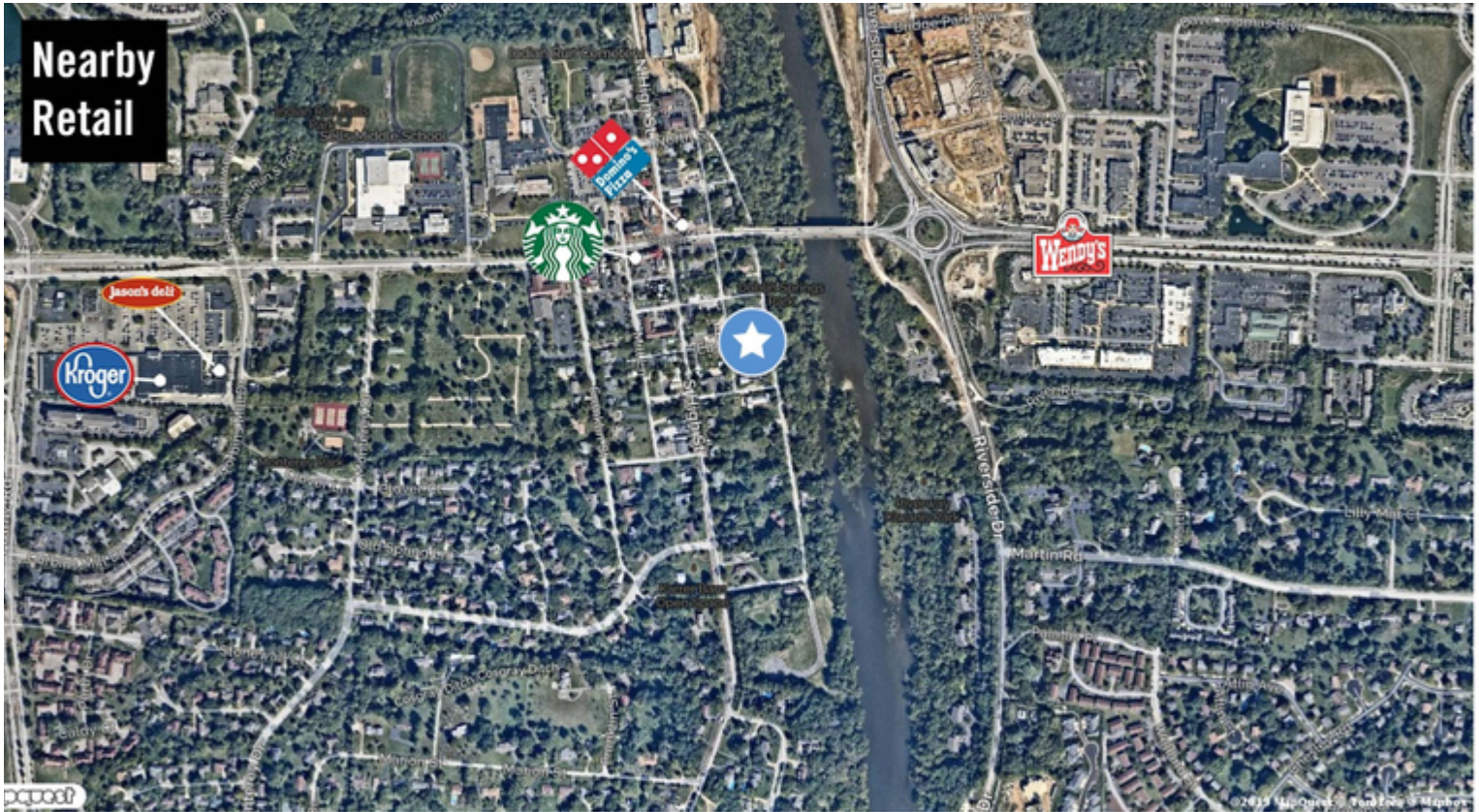
614-367-0668

[christineb@classicalrealty.com](mailto:christineb@classicalrealty.com)

For Lease

# 90 S. High - Suite E

Dublin, OH 43017



» Read the Full Report

*Christine Beckman*

Classical Realty Co.

Broker, CCIM, CPM®, GREEN One of 20 People to Know in Real Estate -Business First 2013

614-367-0668

christineb@classicalrealty.com

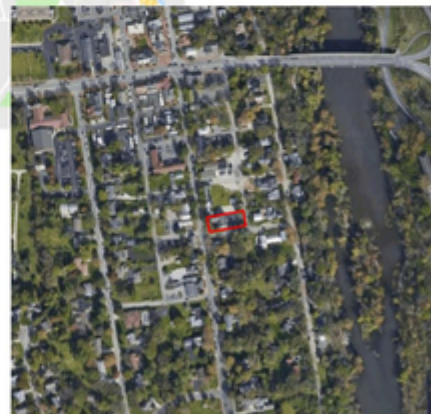
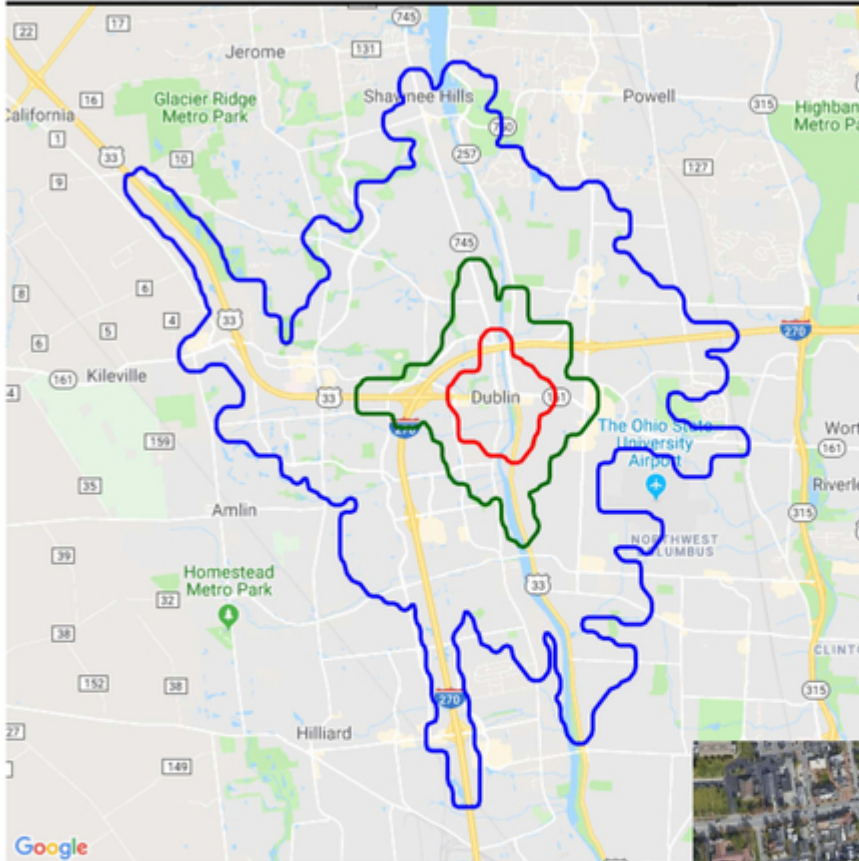
For Lease

# 90 S. High - Suite E

Dublin, OH 43017



## Demographic Report



### 90 S High St

#### Population

Distance	Male	Female	Total
3- Minute	2,019	2,081	4,101
5- Minute	5,945	6,066	12,012
10 Minute	49,744	50,560	100,304

*Christine Beckman*

Classical Realty Co.

Broker, CCIM, CPM®, GREEN One of 20 People to Know in Real Estate -Business First 2013

614-367-0668

[christineb@classicalrealty.com](mailto:christineb@classicalrealty.com)

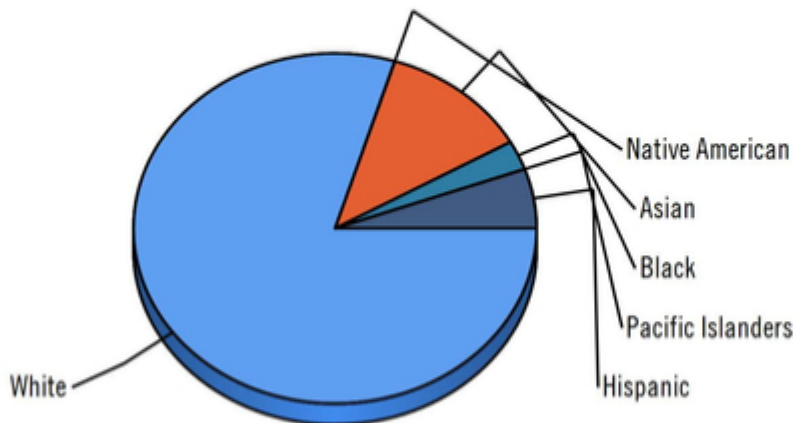
For Lease

# 90 S. High - Suite E

Dublin, OH 43017



## Ethnicity within 5 Minute

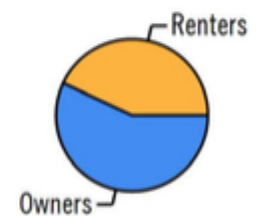


White Native American Asian Black Pacific Islanders Hispanic

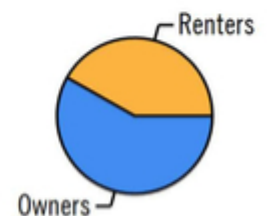
## Home Ownership 3 Minute



## Home Ownership 5 Minute



## Home Ownership 10 Minute



## Employment by Distance

Distance	Employed	Unemployed	Unemployment Rate
3-Minute	2,204	58	0.61 %
5-Minute	6,436	165	1.06 %
10-Minute	55,404	1,134	1.38 %

*Christine Beckman*

Classical Realty Co.

Broker, CCIM, CPM®, GREEN One of 20 People to Know in Real Estate -Business First 2013

614-367-0668

christineb@classicalrealty.com