

Southlake, Texas

Aerial View



THE INFORMATION CONTAINED HEREIN HAS BEEN GIVEN TO US BY THE OWNER OF THE PROPERTY OR OTHER SOURCES WE DEEM RELIABLE. WE HAVE NO REASON TO DOUBT ITS ACCURACY, BUT WE DO NOT GUARANTEE IT. ALL INFORMATION SHOULD BE VERIFIED PRIOR TO PURCHASE OR LEASE.

4851 LBJ Freeway 10th Floor
 Dallas TX 75244
 214 256 7100
nairl.com

NAI Robert Lynn

For Sale/Lease
3,500-21,500 SF



Pinnacle Point, Building 1

405 S. Kimball Avenue

Southlake, Texas 76092

Property Features

- One-Story Office Building in Southlake
- Construction Complete November 2017
- Less Than 4 Miles From DFW International Airport
- 1 Mile From Southlake Town Center



Developed By

SCANNELL
 PROPERTIES

SIOR

bc
 BROWN COMPANY

Tyson Erwin, SIOR
 214 256 7127
terwin@robertlynn.com

Rick Medinis, SIOR
 214 256 7116
rmedinis@robertlynn.com

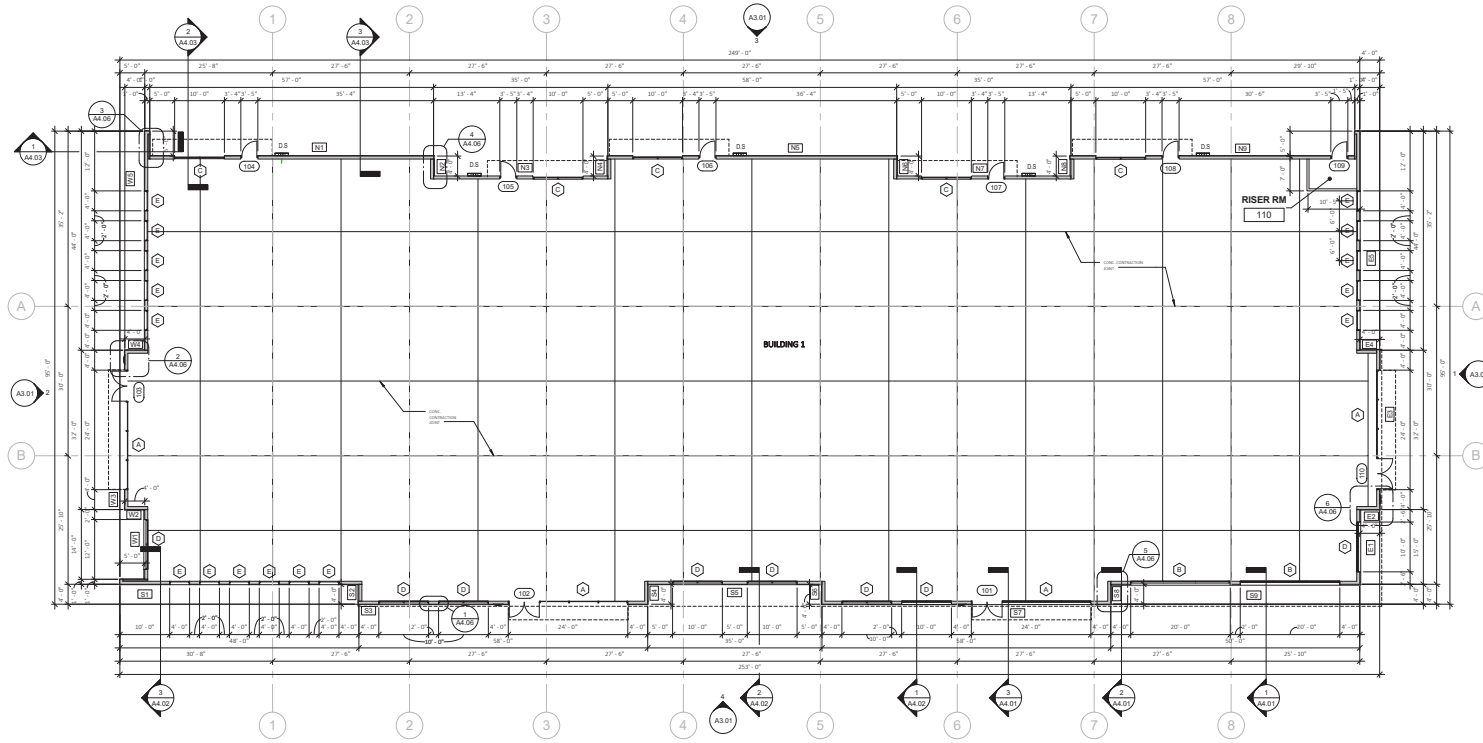
For Sale/Lease

3,500-21,500 SF

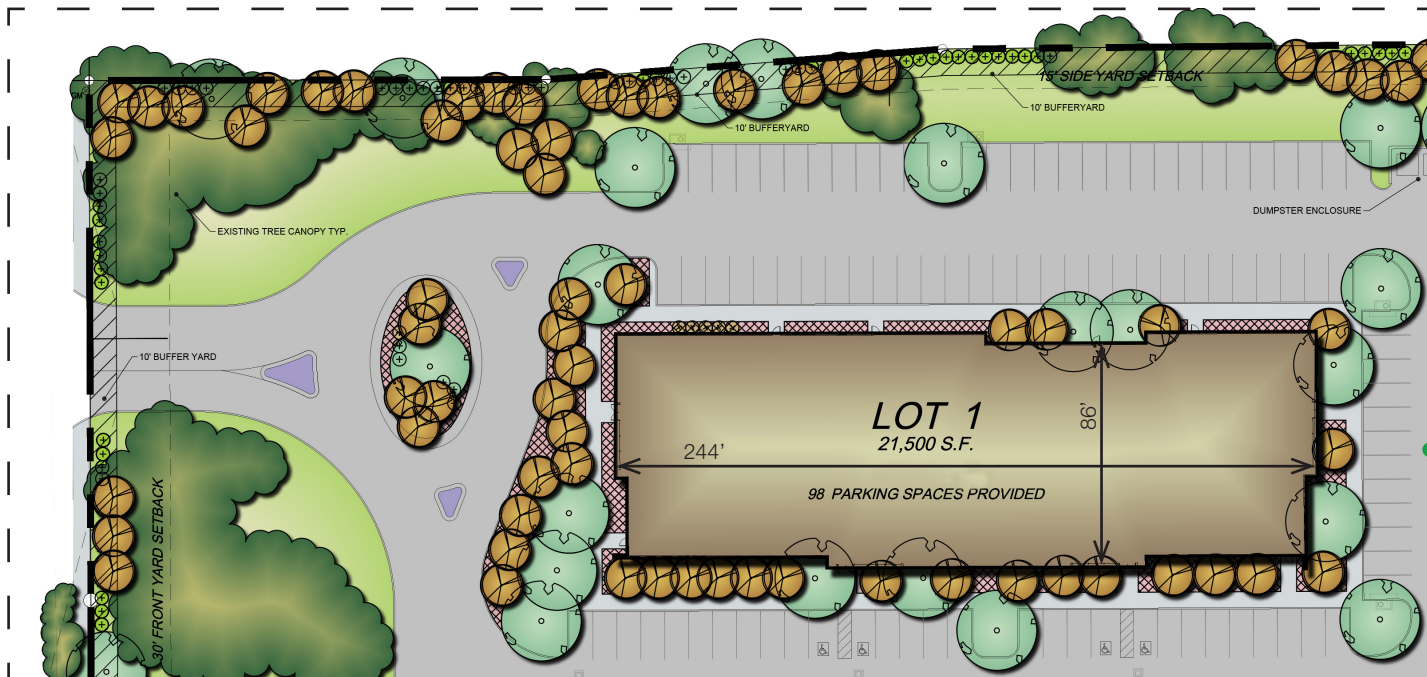
Pinnacle Point, Building 1

305 S. Kimball Avenue
Southlake, Texas 76092

Building 1



Site Plan



Demographics

	1 MILE	3 MILES	5 MILES
Total Population	2,941	63,218	121,474
Total Households	929	22,946	43,534
Average Household Size	3.20	2.70	2.80
Average Household Income	\$198,722	\$138,185	\$154,009

Traffic Counts

- S Kimball Ave: 14,500 VPD
- E Southlake Blvd: 49,000 VPD

Source: Costar 2015 & 2016