

BERING/ZANKER BUSINESS PARK

2345 & 2363 BERING DRIVE, SAN JOSE, CALIFORNIA | ±8,200 & ±14,000 SF FOR LEASE



For more information, please contact:

Liam Martin
Associate
+1 408 436 3619
liam.martin@cushwake.com
LIC #02081625

Steve Pace
Executive Director
P +1 408 615 3419
steve.pace@cushwake.com
LIC #00817396

Dan Hollingsworth
Executive Managing Director
P +1 408 615 3431
dan.hollingsworth@cushwake.com
LIC #01117716



DOLLINGER PROPERTIES

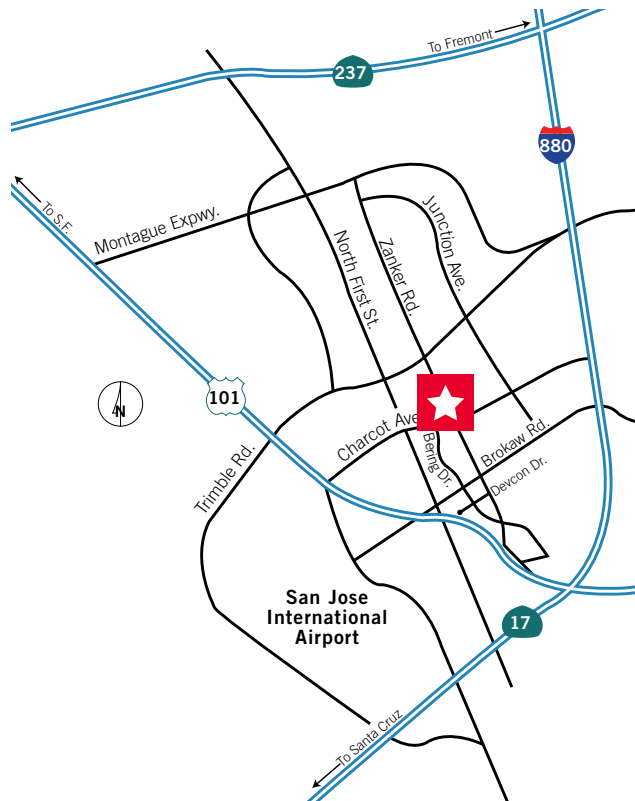


CUSHMAN &
WAKEFIELD

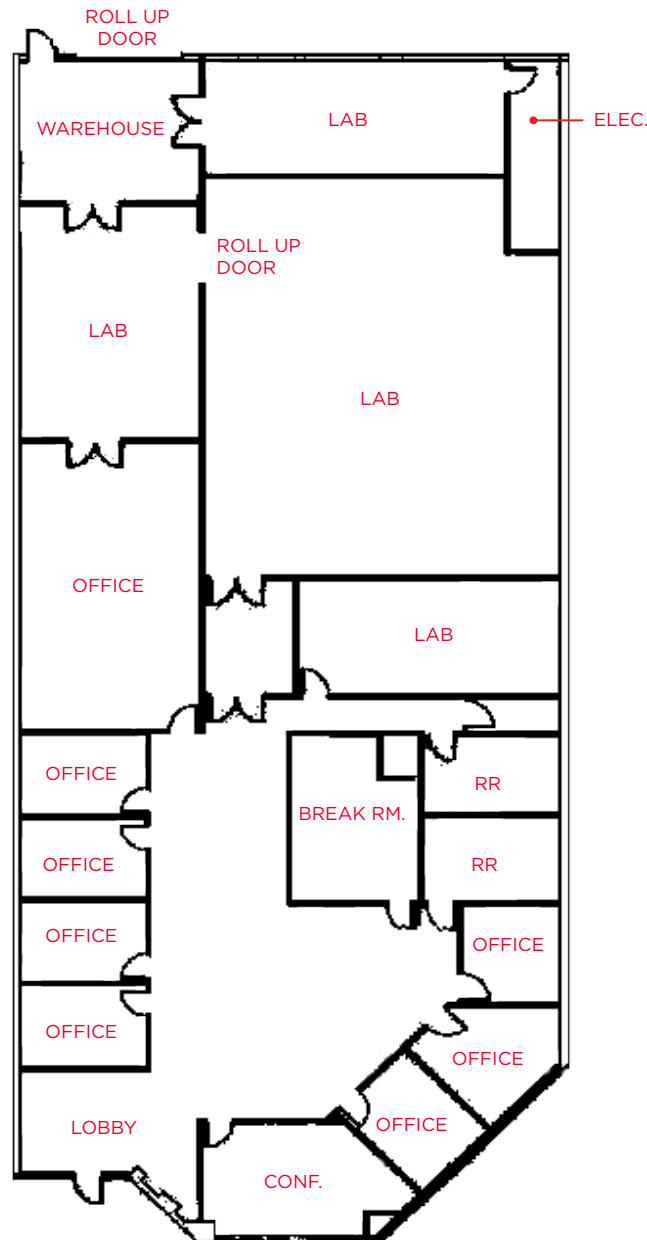
[View Site Specific COVID-19 Prevention Plan](#)

Highlights

- High Image North San Jose location
- 4/1,000 Parking
- Easy Access to Highways 101 & 880
- Walk to Light Rail Station
- Lab, Warehouse, Open Office, Privates and Conference Space.
- Shower in Space

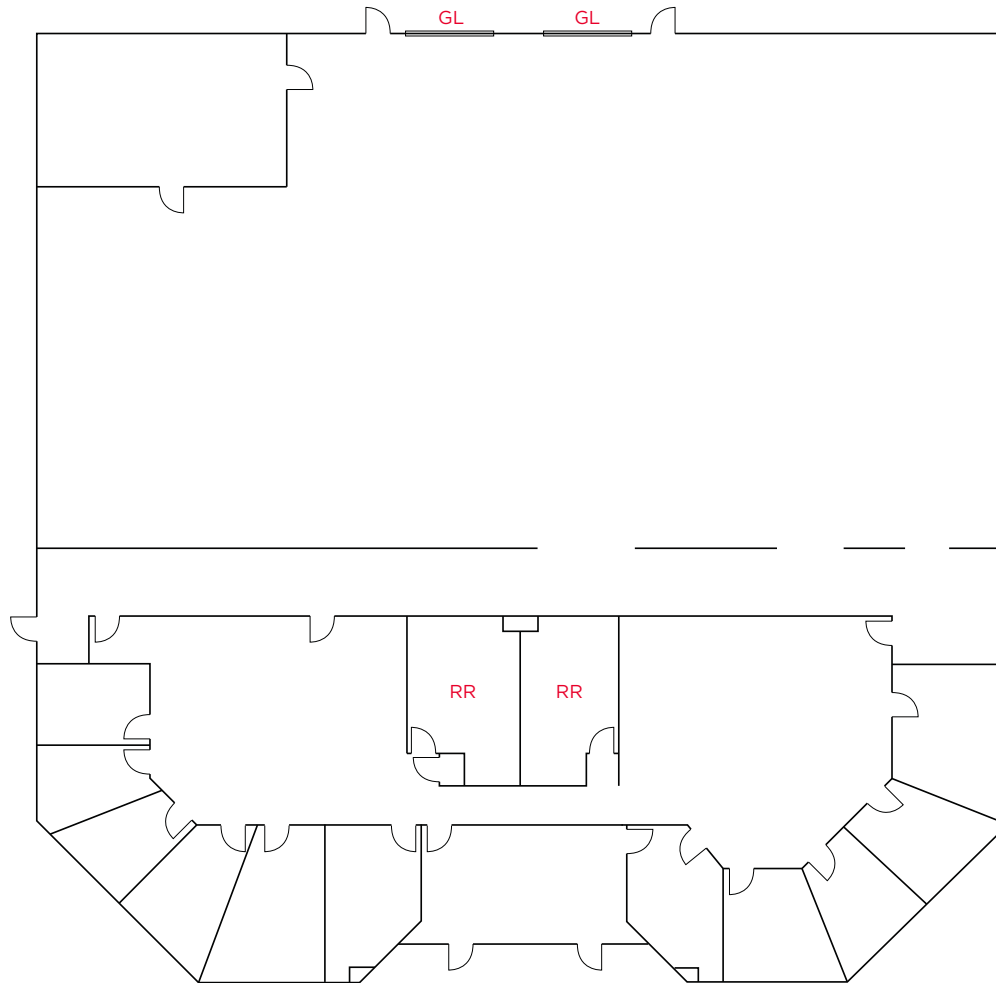


Floor Plan | ±8,200 SF



- **Power:**
400 Amps @ 480 Volts
- **100% HVAC**
- **Description**
Lobby, Perimeter Privates, Break Room, Large Conference Rooms, Labs, Warehouse & Grade Level Loading

Floor Plan | ±14,000 SF



- **Power:**
1600 Amps @ 480 Volts
- **HVAC**
25 Tons
- **Description**
Reception, perimeter privates, shower, open office.

BERING / ZANKER BUSINESS PARK

San Jose, California

Public Transit and Amenities



[VIEW SITE SPECIFIC COVID-19 PREVENTION PLAN](#)

©2020 Cushman & Wakefield. All rights reserved. The information contained in this communication is strictly confidential. This information has been obtained from sources believed to be reliable but has not been verified. NO WARRANTY OR REPRESENTATION, EXPRESS OR IMPLIED, IS MADE AS TO THE CONDITION OF THE PROPERTY (OR PROPERTIES) REFERENCED HEREIN OR AS TO THE ACCURACY OR COMPLETENESS OF THE INFORMATION CONTAINED HEREIN, AND SAME IS SUBMITTED SUBJECT TO ERRORS, OMISSIONS, CHANGE OF PRICE, RENTAL OR OTHER CONDITIONS, WITHDRAWAL WITHOUT NOTICE, AND TO ANY SPECIAL LISTING CONDITIONS IMPOSED BY THE PROPERTY OWNER(S). ANY PROJECTIONS, OPINIONS OR ESTIMATES ARE SUBJECT TO UNCERTAINTY AND DO NOT SIGNIFY CURRENT OR FUTURE PROPERTY PERFORMANCE.