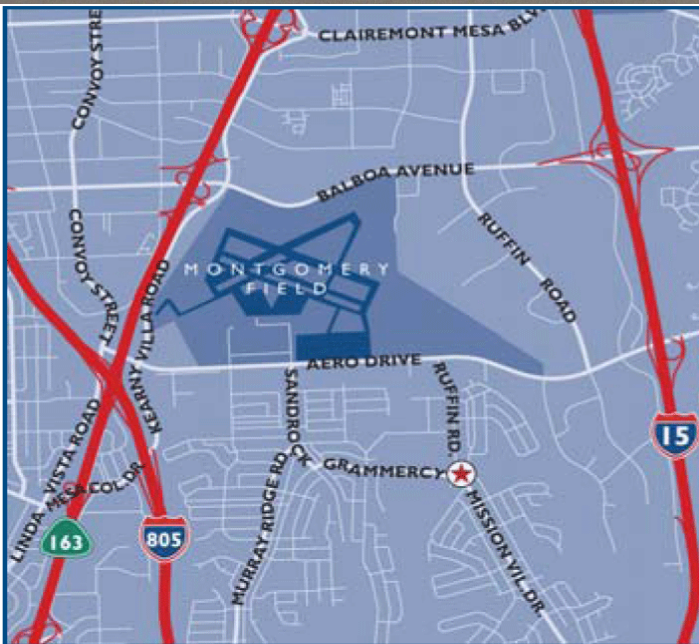


FOR LEASE

Kearny Mesa Office Space



3241 & 3247 MISSION VILLAGE DRIVE. SAN DIEGO, CA 92123



Property Amenities

- › Approximately 14,470 square feet divisible available
- › Building signage
- › Single story office building
- › Adjacent to public transportation and residential
- › The 928 bus stop is in front of the building

Lease Rate

- › \$.95 per square foot per month, plus electricity and janitorial

KEN KISBERT
858.677.5359 Direct
ken.kisbert@colliers.com
License No: 00930153

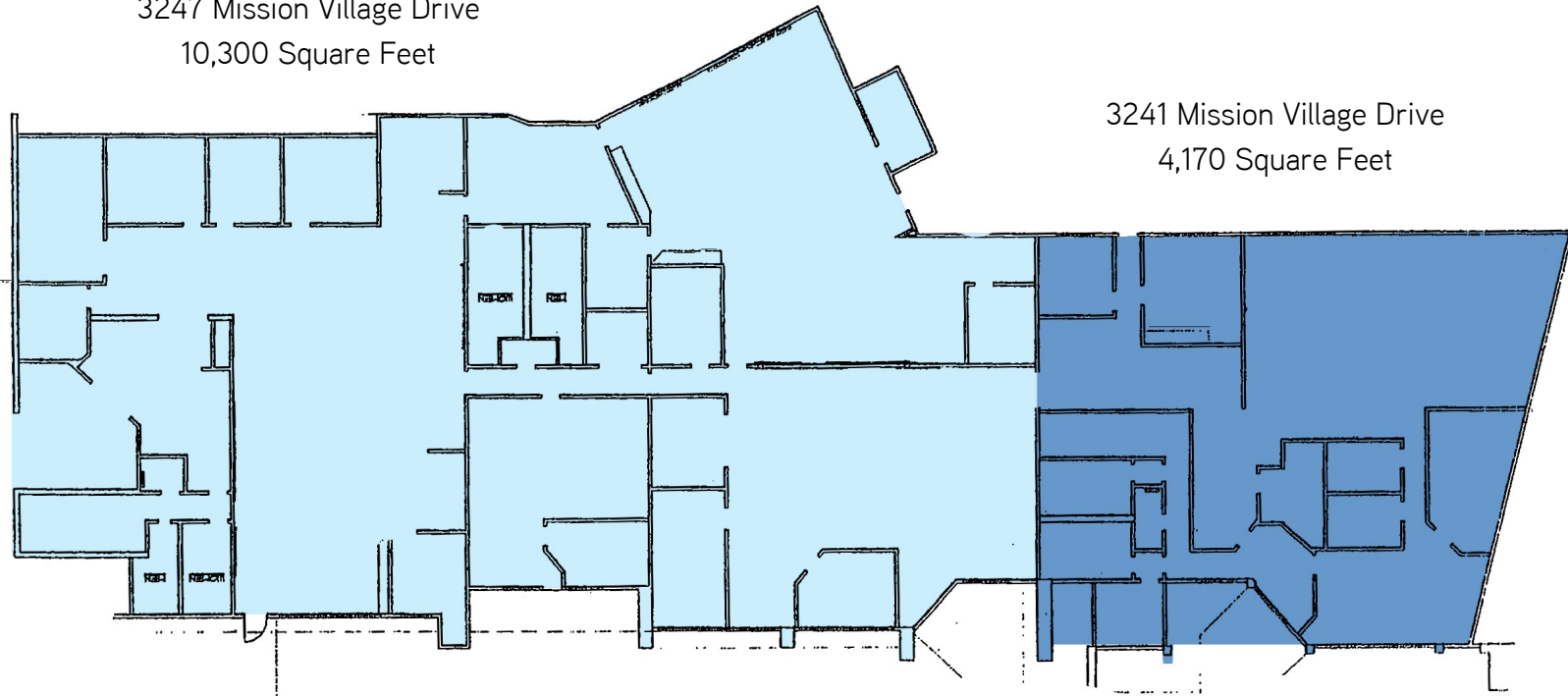


Kearny Mesa Office Space > Floor Plan

KEN KISBERT
858.677.5359 Direct
ken.kisbert@colliers.com
License No: 00930153

3247 Mission Village Drive
10,300 Square Feet

3241 Mission Village Drive
4,170 Square Feet



This document has been prepared by Colliers International for advertising and general information only. Colliers International makes no guarantees, representations or warranties of any kind, expressed or implied, regarding the information including, but not limited to, warranties of content, accuracy and reliability. Any interested party should undertake their own inquiries as to the accuracy of the information. Colliers International excludes unequivocally all inferred or implied terms, conditions and warranties arising out of this document and excludes all liability for loss and damages arising there from. Colliers International is a worldwide affiliation of independently owned and operated companies.

