



6924 S. Bryant Avenue

Oklahoma City, Oklahoma 73149

PROPERTY HIGHLIGHTS

- 39.51 Acres MOL Partially Graveled
- Former Natural Gas Compression Site
- 5,200 SF Industrial Warehouse Including Crane
- 1,800 SF Office Building
- Includes 2 Acres Income Producing Land Lease
- Zoned I-2 (SP-365)
- Heavy Power & Utilities to Site

LOCATION HIGHLIGHTS

- Very Close Proximity to I-240
- 5 Minute Drive to I-35 & I-240 Interchange
- Largest Available Industrial Parcel on East Side of Oklahoma City
- Directly West of SE OKC Landfill
- Dimensions: 1350' x 1550'
- Great Site for Industrial Park

www.naisullivangroup.com

NO WARRANTY OR REPRESENTATION, EXPRESS OR IMPLIED, IS MADE AS TO THE ACCURACY OF THE INFORMATION CONTAINED HEREIN, AND THE SAME IS SUBMITTED SUBJECT TO ERRORS, OMISSIONS, CHANGE OF PRICE, RENTAL OR OTHER CONDITIONS, PRIOR SALE, LEASE OR FINANCING, OR WITHDRAWAL WITHOUT NOTICE, AND OF ANY SPECIAL LISTING CONDITIONS IMPOSED BY OUR PRINCIPALS NO WARRANTIES OR REPRESENTATIONS ARE MADE AS TO THE CONDITION OF THE PROPERTY OR ANY HAZARDS CONTAINED THEREIN ARE ANY TO BE IMPLIED.

Amir Shams / Zac McQueen

Amir's Cell: 1 405 313 0333

Zac's Cell: 1 405 476 9199

amir@naisullivangroup.com

zac@naisullivangroup.com

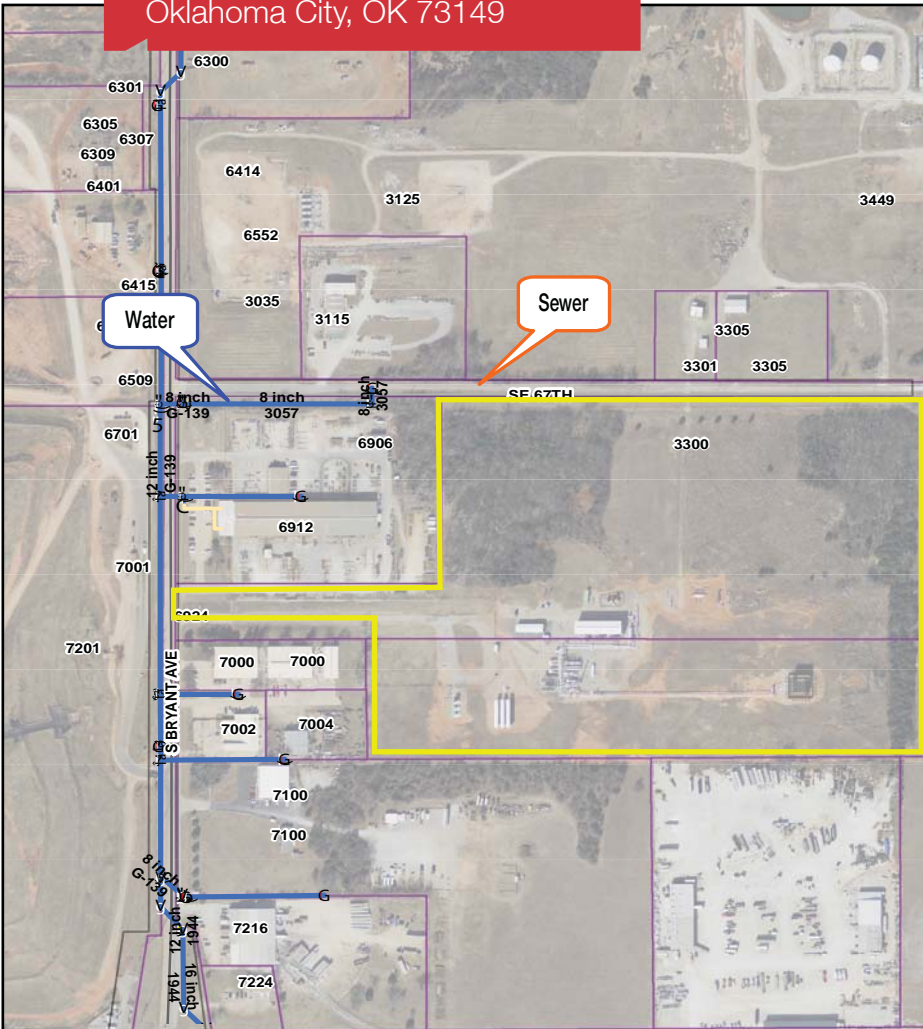
4045 N.W. 64th Street, Suite 340

Oklahoma City, Oklahoma 73116

Office: 1 405 840 0600

Fax: 1 405 840 0610

6924 S. Bryant Avenue
Oklahoma City, OK 73149



DEMOGRAPHICS

Population

1 Mile: 1,890	3 Mile: 61,792	5 Mile: 172,428
------------------	-------------------	--------------------

Average Household Income

1 Mile: \$34,802	3 Mile: \$51,934	5 Mile: \$45,565
---------------------	---------------------	---------------------

Total Households

1 Mile: 628	3 Mile: 21,903	5 Mile: 64,581
----------------	-------------------	-------------------

Amir Shams / Zac McQueen

Amir's Cell: 1 405 313 0333
Zac's Cell: 1 405 476 9199
amir@naisullivangroup.com
zac@naisullivangroup.com

www.naisullivangroup.com

NAISullivan Group

4045 N.W. 64th Street, Suite 340
Oklahoma City, Oklahoma 73116
Office: 1 405 840 0600
Fax: 1 405 840 0610