



# AIRPORT EXECUTIVE PLAZA

FOR LEASE | OFFICE | 1321 MURFREESBORO PIKE

FOUNDRY  
COMMERCIAL



# PROPERTY OVERVIEW

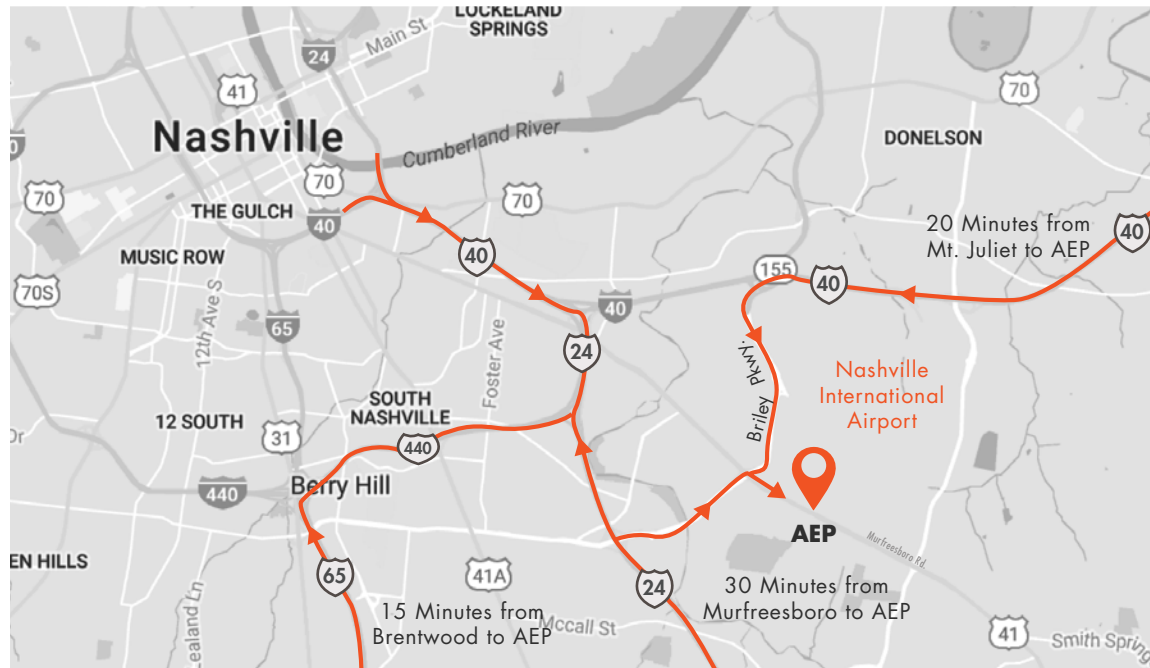


## PROPERTY DETAILS

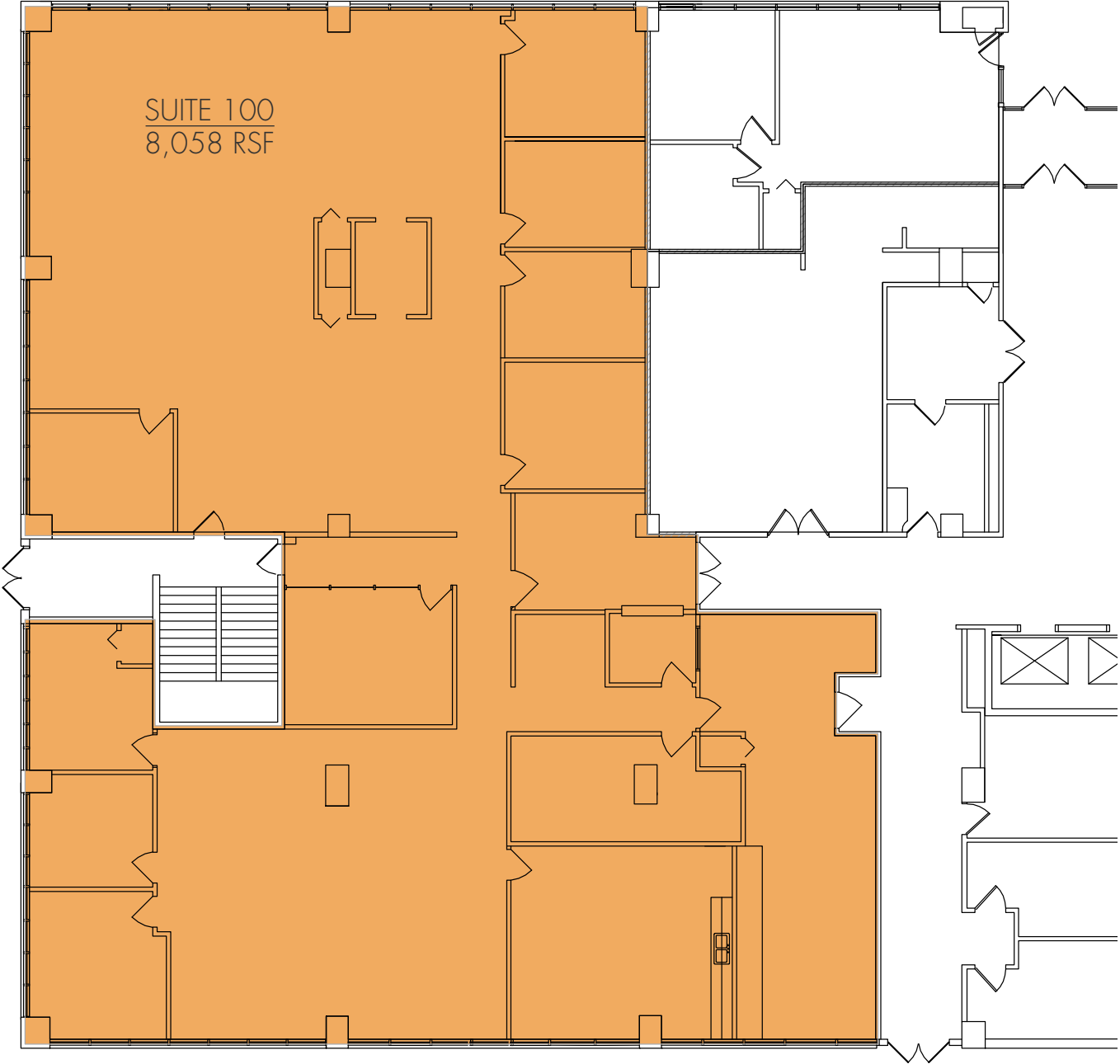
<b>Address</b>	1321 Murfreesboro Pike Nashville, TN 37217
<b>Submarket</b>	Airport South
<b>Cross Streets</b>	Murfreesboro Pk & Briley Pkwy
<b>Building Size</b>	164,684 SF
<b>Parking</b>	4/1,000 Covered Parking Available

## HIGHLIGHTS & AMENITIES

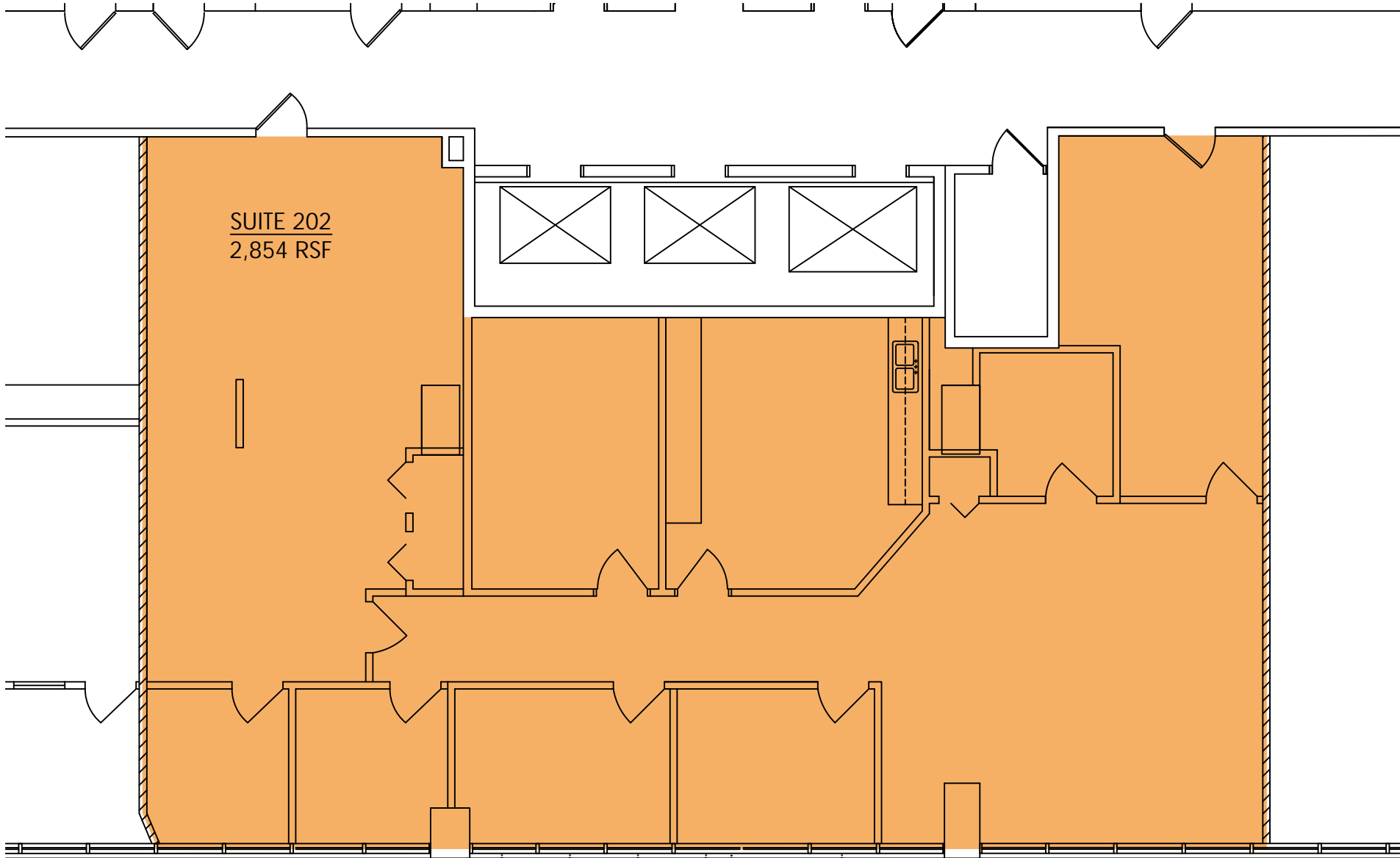
- 5.5 Miles from Downtown Nashville
- Directly opposite Murfreesboro Pk from airport
- Superior interstate access to I-24, I-40, and I-440
- Dedicated HVAC units for all suites
- Recent building renovations include lobby and hallway finishes, upgraded elevator cabs, and high-end lighting fixtures
- Onsite food service market cafe serves breakfast and lunch
- Shared multi-media conference center for building tenants with online reservation system



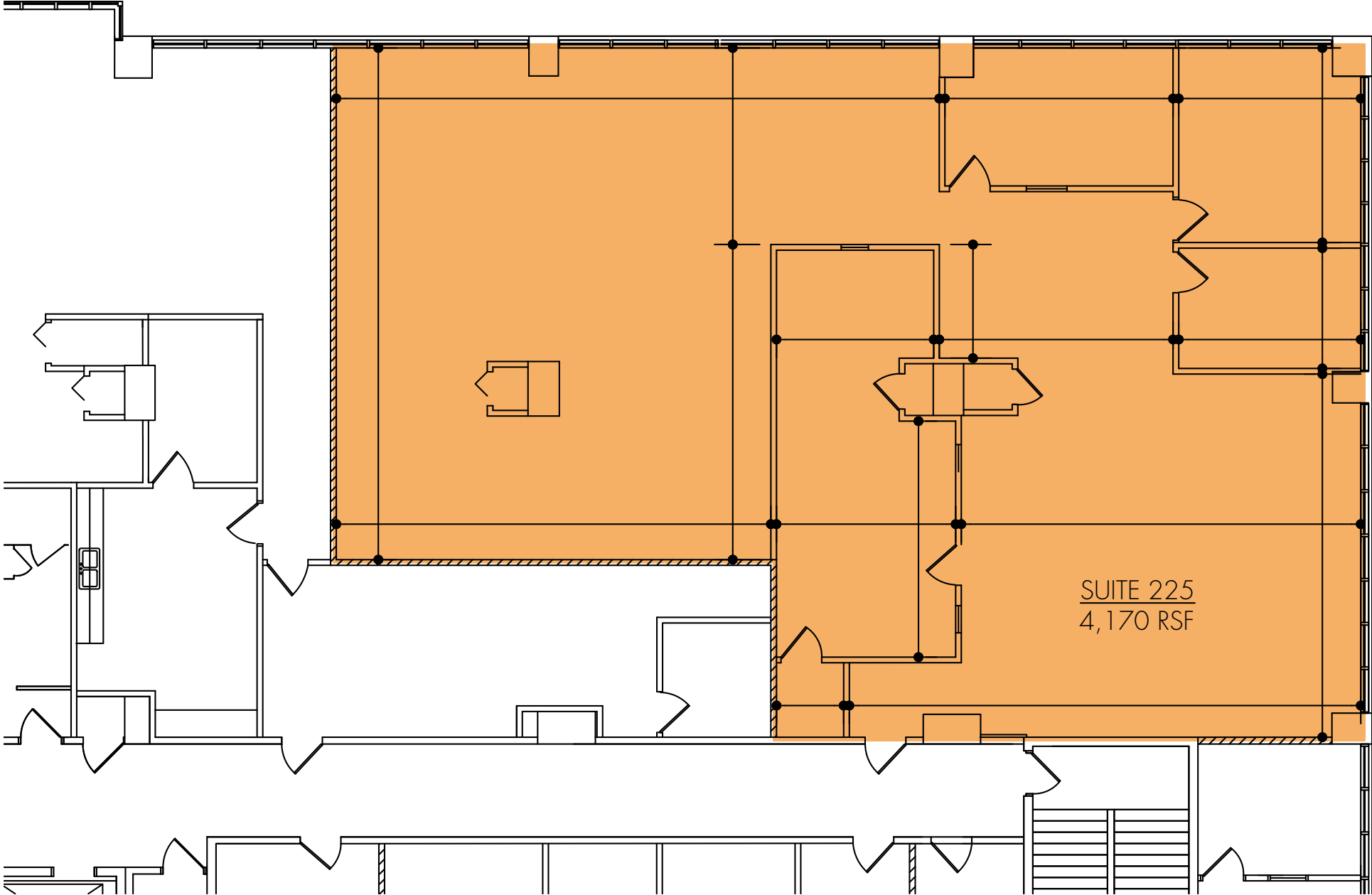
SUITE 100 - AVAILABLE JUNE 1, 2020



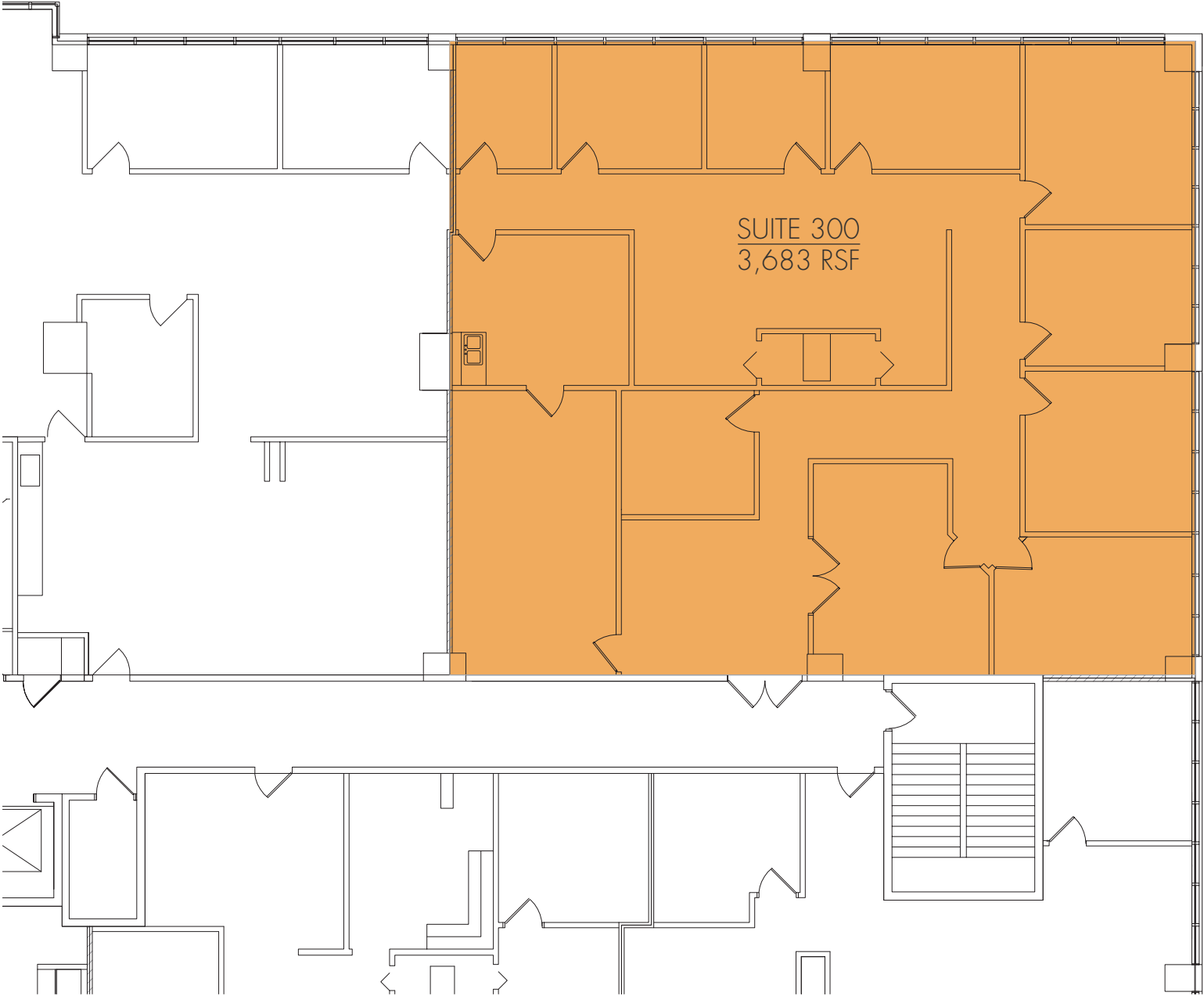
SUITE 202



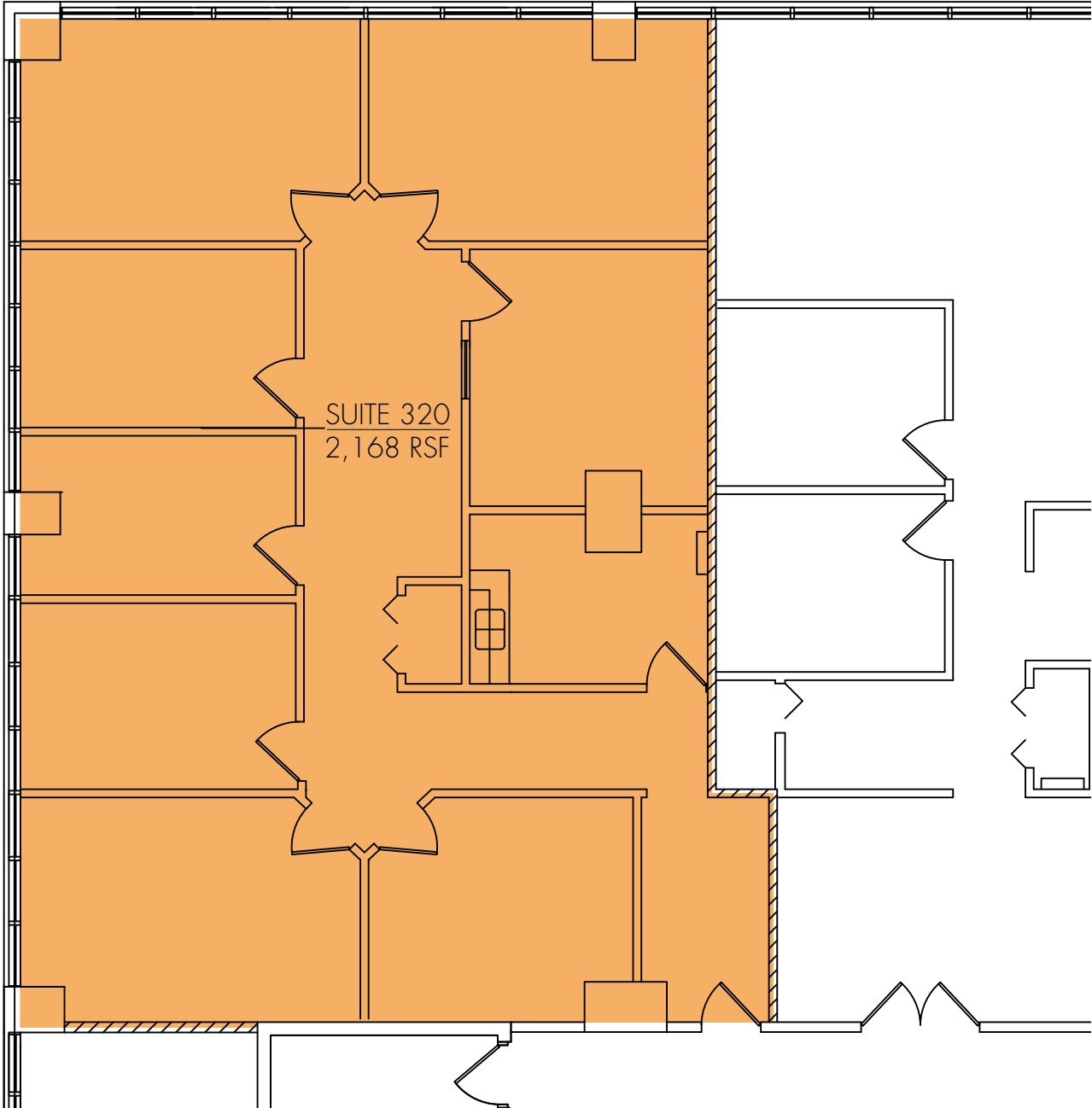
SUITE 225



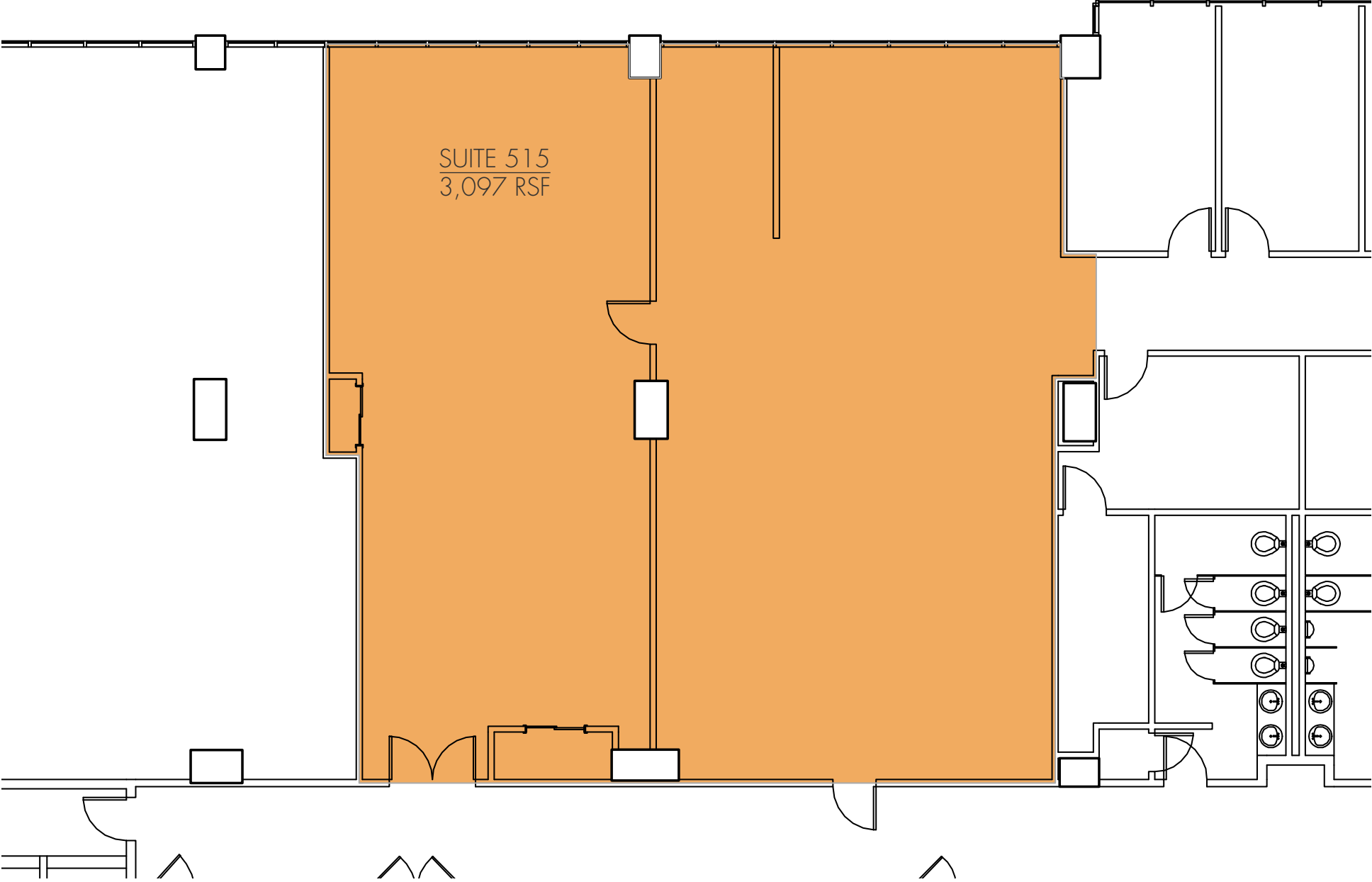
SUITE 300



SUITE 320

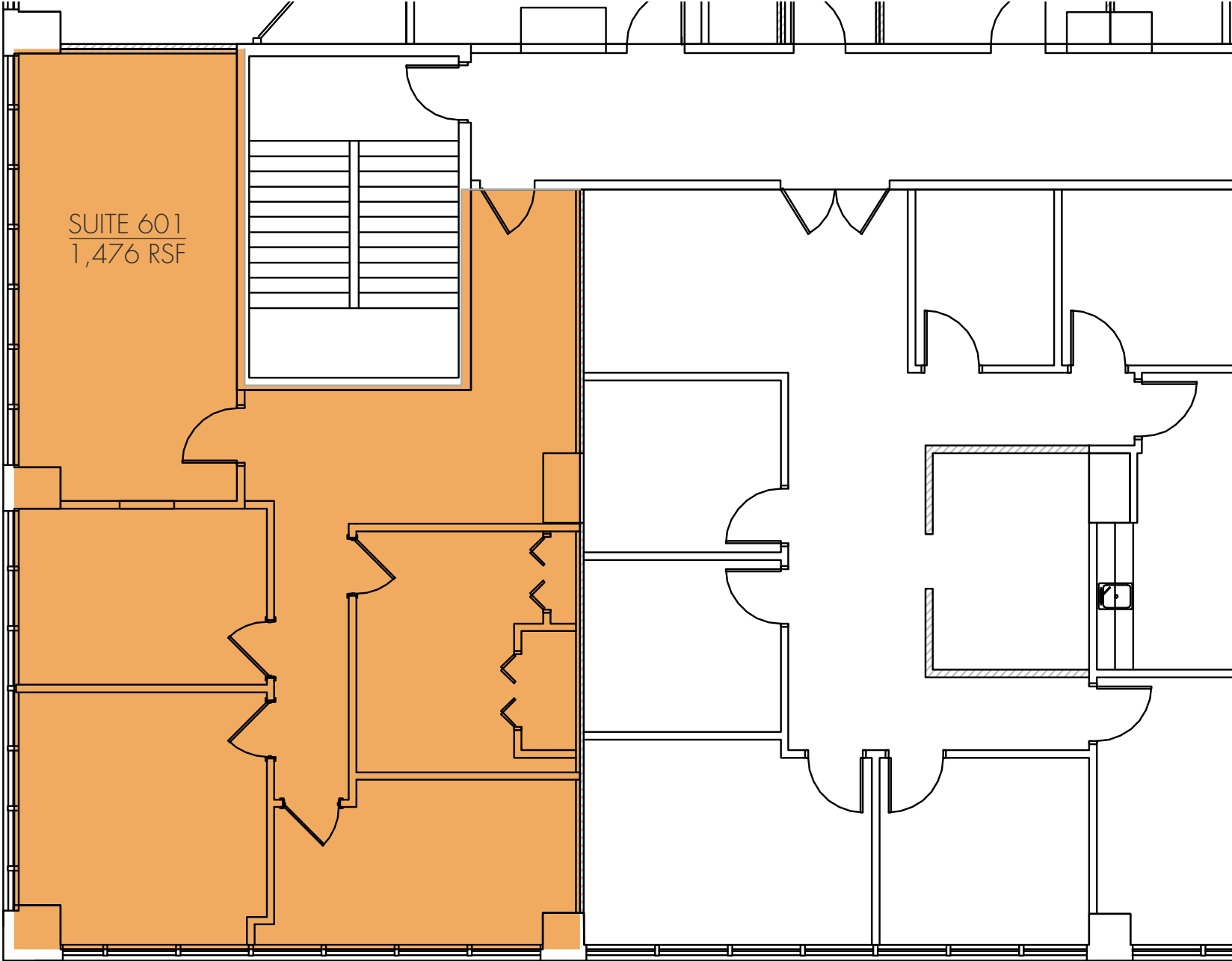


SUITE 515

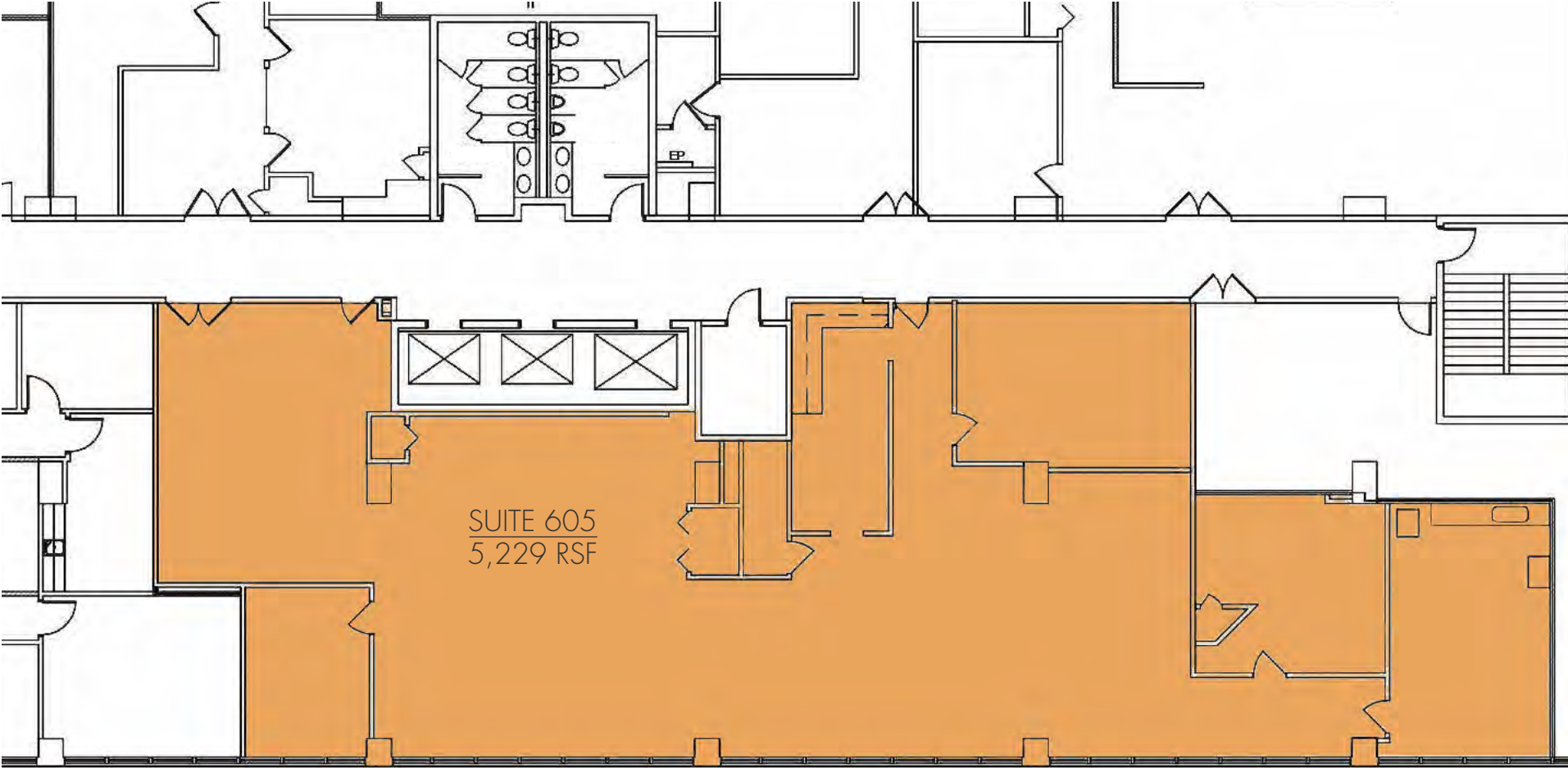




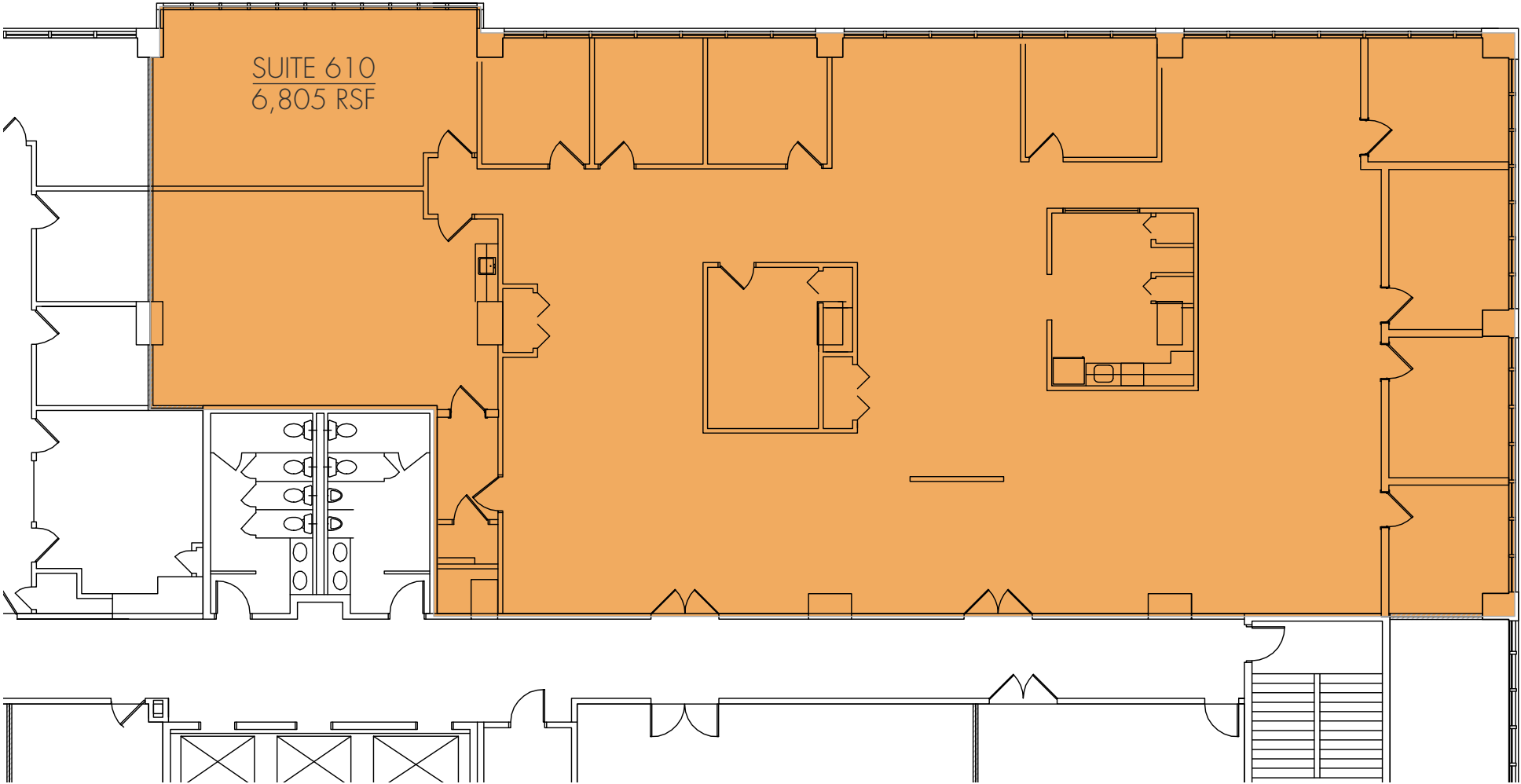
SUITE 601 - SPEC SUITE



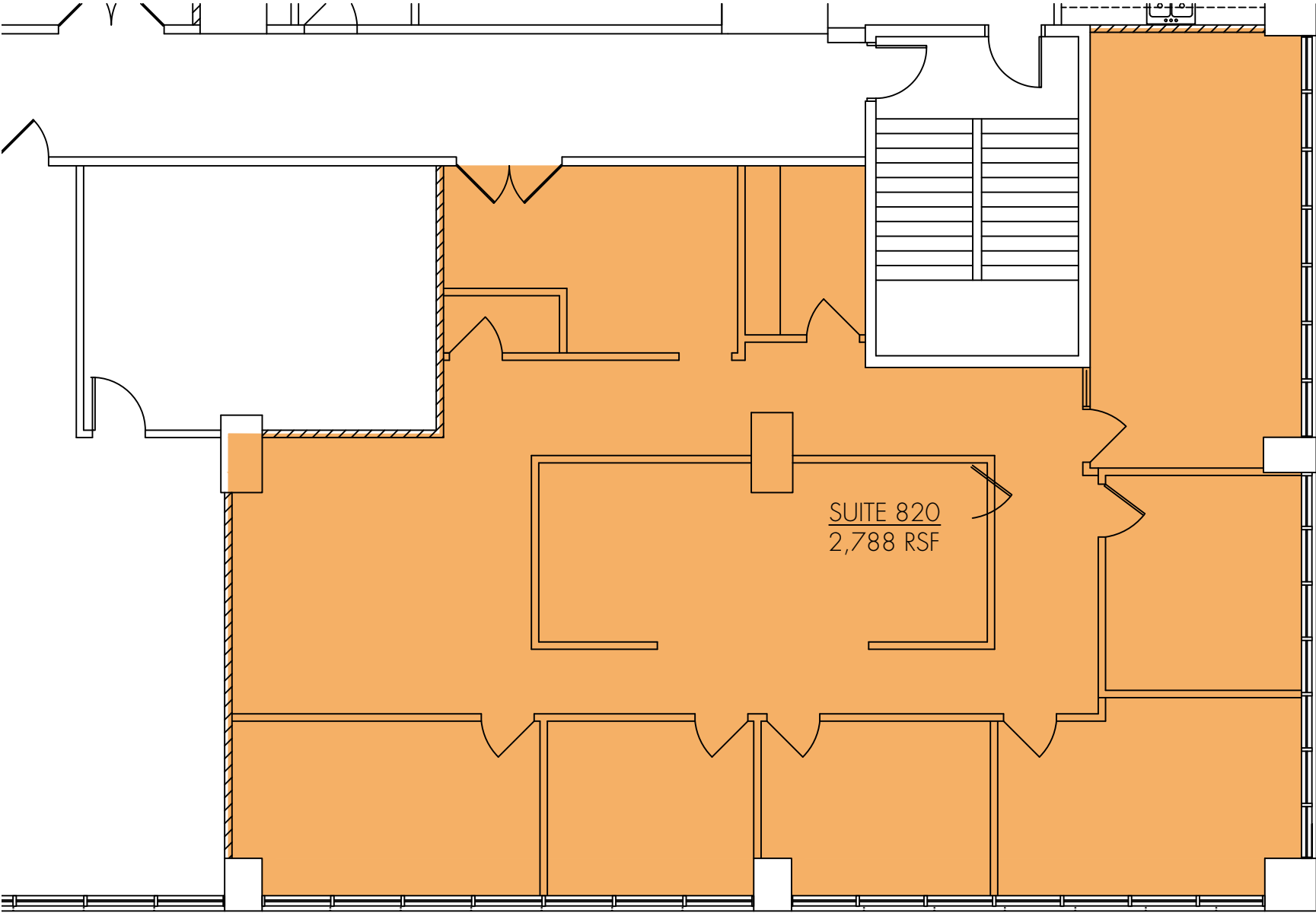
SUITE 605



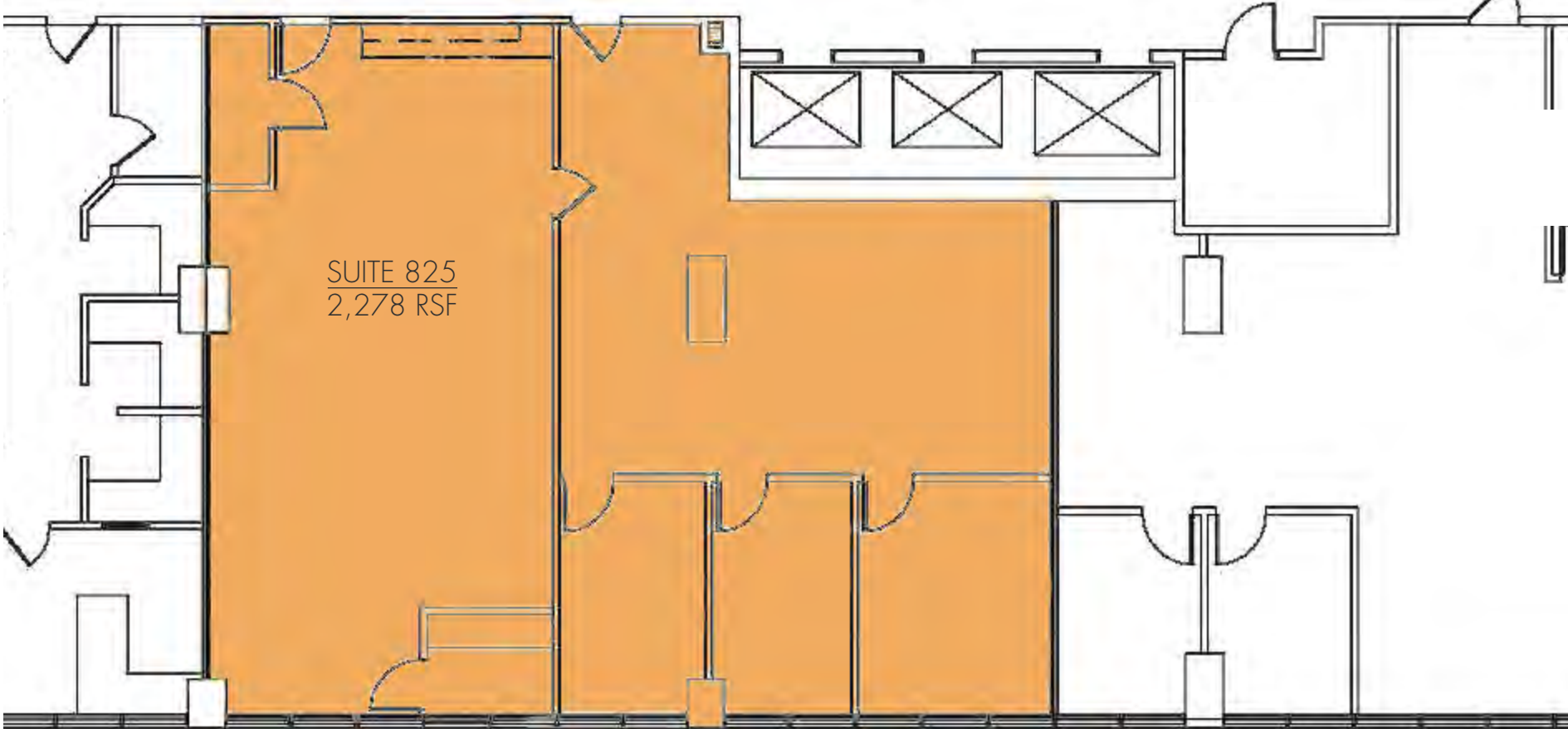
SUITE 610 - AVAILABLE JUNE 1, 2020



SUITE 820



SUITE 825



SUITE 825  
2,278 RSF



AIRPORT EXECUTIVE PLAZA  
1321 MURFREESBORO PIKE

---

SHELBY HALL

[SHELBY.HALL@FOUNDRYCOMMERCIAL.COM](mailto:SHELBY.HALL@FOUNDRYCOMMERCIAL.COM)

**615.771.0770**

ANDREW MAXWELL

[ANDREW.MAXWELL@FOUNDRYCOMMERCIAL.COM](mailto:ANDREW.MAXWELL@FOUNDRYCOMMERCIAL.COM)

**615.418.0520**

**FOUNDRY**  
COMMERCIAL

[foundrycommercial.com](http://foundrycommercial.com)

615.997.0010

