

MIDTOWN BUSINESS CENTER

15000 EIGHT MILE ROAD
OAK PARK, MICHIGAN

LAND FOR SALE

17.35 Acres Available

OWNED BY:



**SIGNATURE
ASSOCIATES**
KNOW SIGNATURE | KNOW RESULTS

LOCATED IN FEDERALLY APPROVED OPPORTUNITY ZONE



PROPERTY FEATURES

- 17.35 acres available
- Lt. Industrial zoning
- All utilities to the site
- Exceptional redevelopment site
- Build-to-suit available
- New road with a new traffic light at Greenfield providing great access
- Price and taxes TBD



For more information, please contact:

PAUL HOGE
(248) 948 0103
paulhoge@signatureassociates.com

GARY STEPHENS
(248) 948 0104
gstephens@signatureassociates.com

SIGNATURE ASSOCIATES
One Towne Square, Suite 1200
Southfield, MI 48076
www.signatureassociates.com

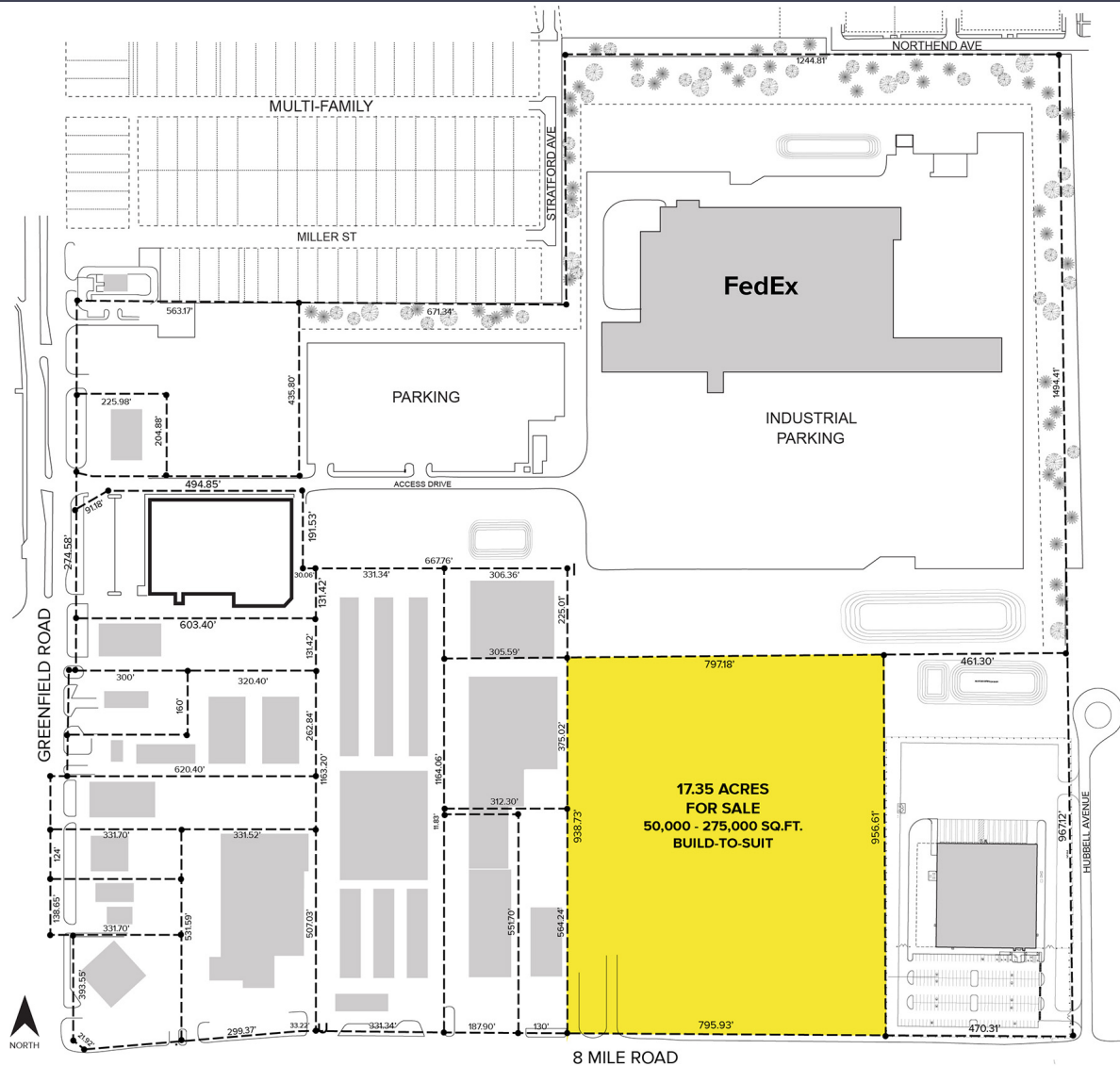
Information is subject to verification and no liability for errors or omissions is assumed. Price is subject to change and listing withdrawal.

MIDTOWN BUSINESS CENTER

15000 EIGHT MILE ROAD - OAK PARK, MICHIGAN

17.35
Acres
AVAILABLE

Site Plan



For more information, please contact:

PAUL HOGE
(248) 948 0103
paulhoge@signatureassociates.com

GARY STEPHENS
(248) 948 0104
gstephens@signatureassociates.com

SIGNATURE ASSOCIATES
One Towne Square, Suite 1200
Southfield, MI 48076
www.signatureassociates.com

Information is subject to verification and no liability for errors or omissions is assumed. Price is subject to change and listing withdrawal.