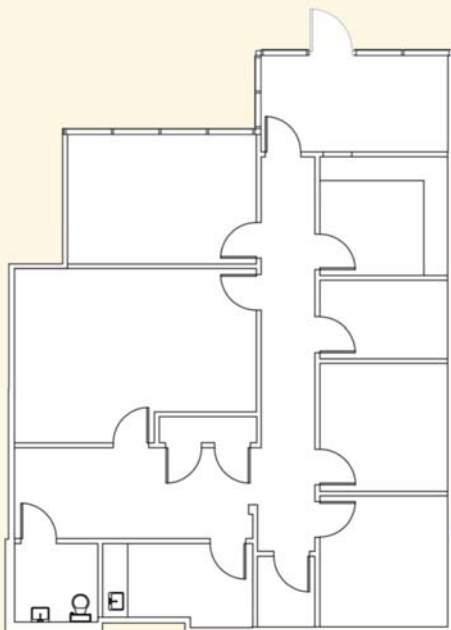


Palm Court at Hidden River

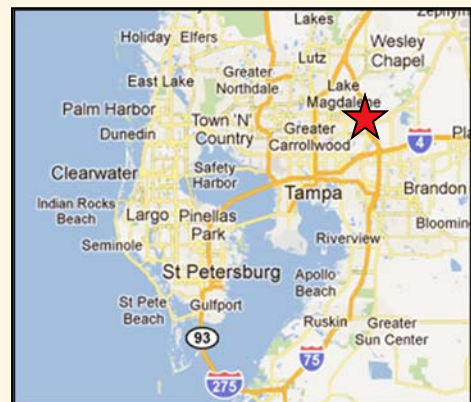
8600 Hidden River Parkway, Tampa, Florida 33637



EXISTING SUITE PLAN

SUITE 400

- 1,614 square feet
- Great office space with conference room, offices, break room, and reception area
- Garden office suites which offer exterior signage & individual direct outdoor entry with 24/7 access
- Verizon SmartPark with FiOS & Level 3 Communications available



MAP OF TAMPA BAY



Osprey Real Estate Services

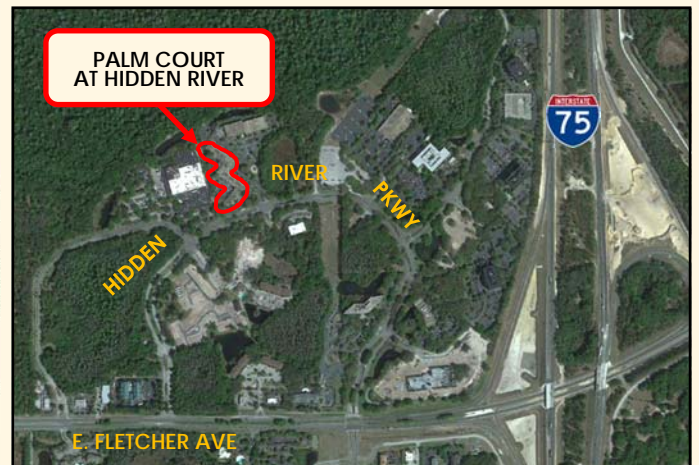
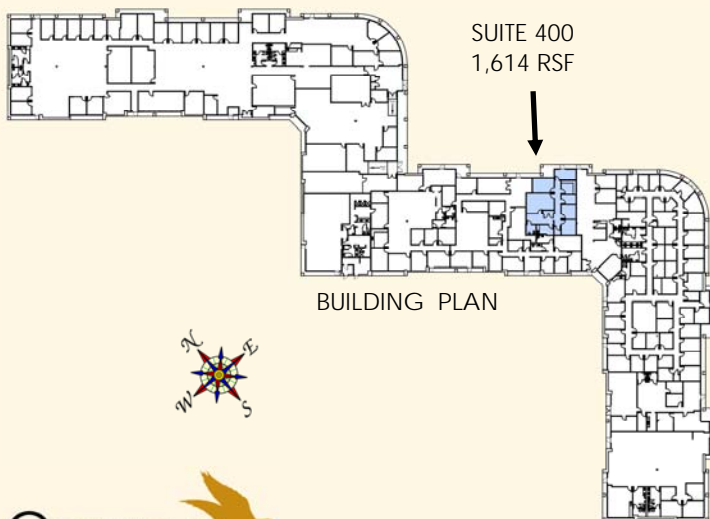
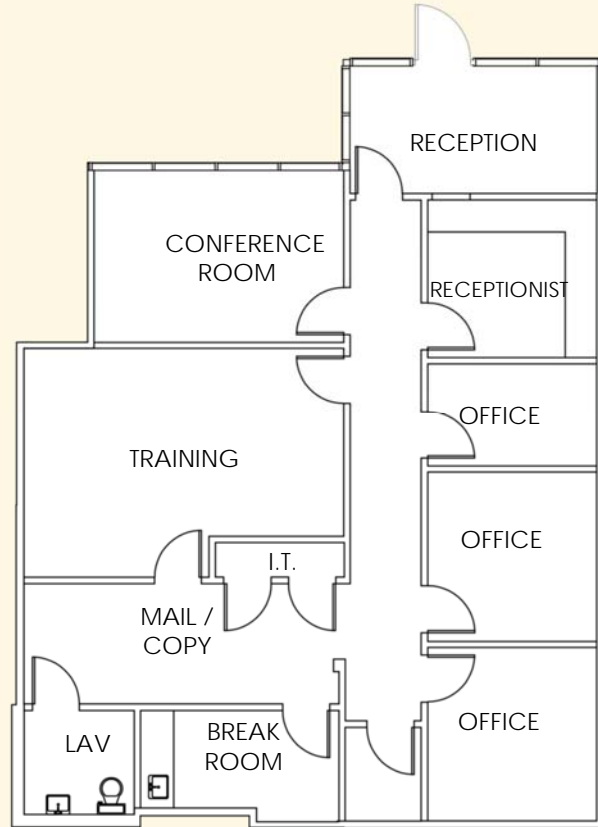
400 Carillon Parkway, St. Petersburg, FL 33716

No warranty of representation, expressed or implied, is made to the accuracy of information contained herein, and same is submitted subject to errors, change of price, rental or other conditions, withdrawal without notice, and to any special listing conditions, imposed by our principals.

Palm Court at Hidden River

8600 Hidden River Parkway, Tampa, Florida 33637

EXISTING LAYOUT
Suites 400: 1,614 RSF



Osprey Real Estate Services
400 Carillon Parkway, St. Petersburg, FL 33716
www.ospreyres.com

Wendy Giffin
wgiffin@ospreyres.com
727.565.0751

No warranty of representation, expressed or implied, is made to the accuracy of information contained herein, and same is submitted subject to errors, change of price, rental or other conditions, withdrawal without notice, and to any special listing conditions, imposed by our principals.