

1450 SW MARLOW AVE

For Lease



Cedar Hills Office/Medical Space

Centrally located and accessible at the Sunset/Hwy 217 Interchange within easy walking distance by skybridge to the MAX Sunset Transit Center

FEATURES

Approximately 1,304 SF

Existing medical/office space plan

- Waiting room with high ceilings and natural light
- Large reception area
- Two+ offices
- Bathroom, server room

Off-street parking

Dedicated utilities

Light TI's needed, otherwise turnkey

Asking \$20/SF NNN

1450 SW Marlow Ave, Portland, OR

CONTACT

Mark Piscitelli

Vice President

503.721.2734

markp@kiddermathews.com

kiddermathews.com

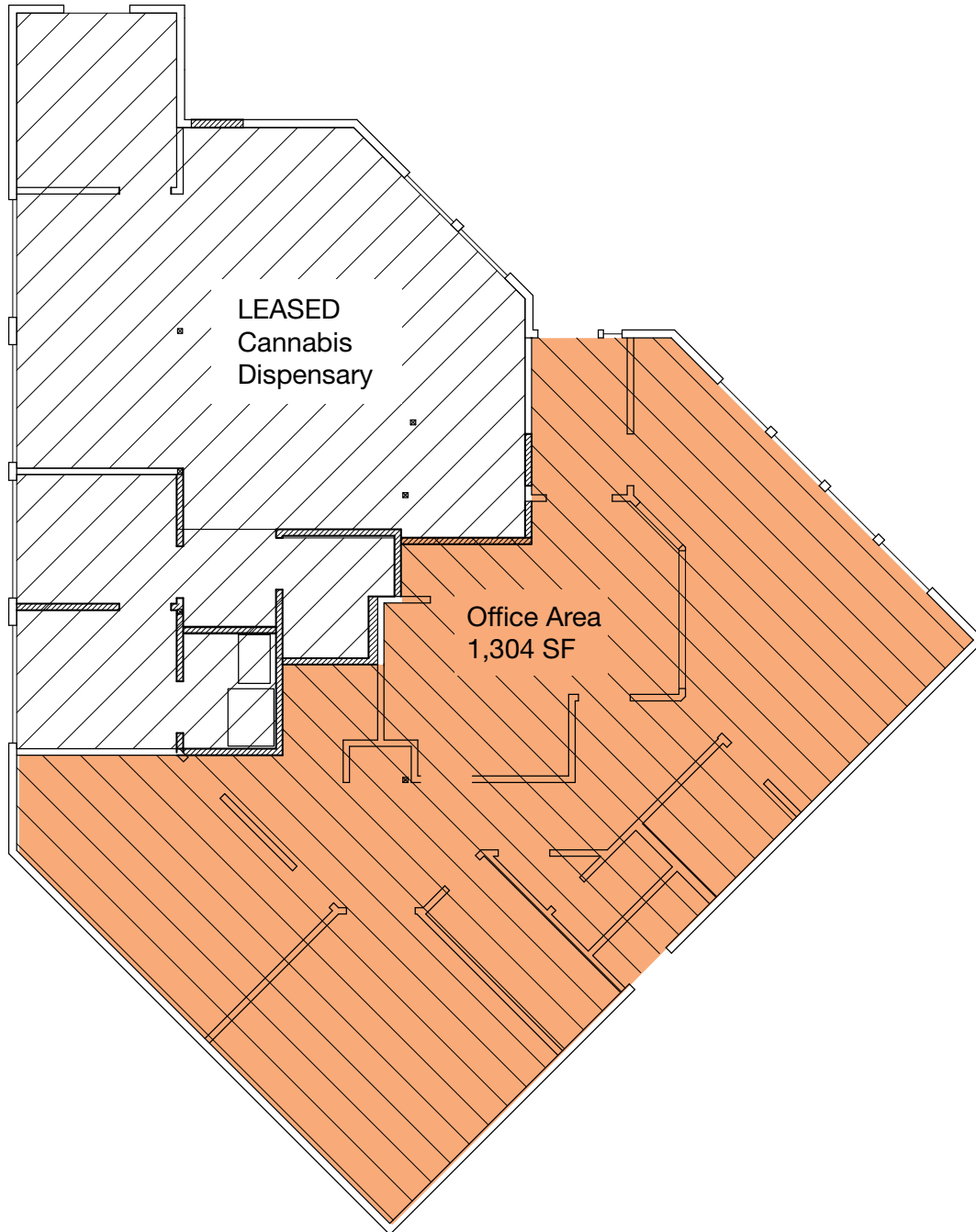
This information supplied herein is from sources we deem reliable. It is provided without any representation, warranty or guarantee, expressed or implied as to its accuracy. Prospective Buyer or Tenant should conduct an independent investigation and verification of all matters deemed to be material, including, but not limited to, statements of income and expenses. Consult your attorney, accountant, or other professional advisor.



1450 SW MARLOW AVE

For Lease

SITE PLAN



CONTACT

Mark Piscitelli | 503.721.2734 | markp@kiddermathews.com | kiddermathews.com

This information supplied herein is from sources we deem reliable. It is provided without any representation, warranty or guarantee, expressed or implied as to its accuracy. Prospective Buyer or Tenant should conduct an independent investigation and verification of all matters deemed to be material, including, but not limited to, statements of income and expenses. Consult your attorney, accountant, or other professional advisor.



1450 SW MARLOW AVE

For Lease

AERIAL



CONTACT

Mark Piscitelli | 503.721.2734 | markp@kiddermathews.com | kiddermathews.com

This information supplied herein is from sources we deem reliable. It is provided without any representation, warranty or guarantee, expressed or implied as to its accuracy. Prospective Buyer or Tenant should conduct an independent investigation and verification of all matters deemed to be material, including, but not limited to, statements of income and expenses. Consult your attorney, accountant, or other professional advisor.