



Treasure & Associates

COMMERCIAL REAL ESTATE

Brokerage | Tenant Representation | Consultation | Development



5122 Morse Rd.

Columbus, OH 43230

1.68 Acres available in Franklin County, City of Columbus. Curb Cut, Zoned C-2

For More Information, call
(614) 505-4200

- Asking Price is \$519,000
- Cost Per Acre is \$308,855
- Ideal for Apartments or Storage
- City of Columbus
- Franklin County
- 1.68 acres +/-
- Curb Cut
- Zoned C-2

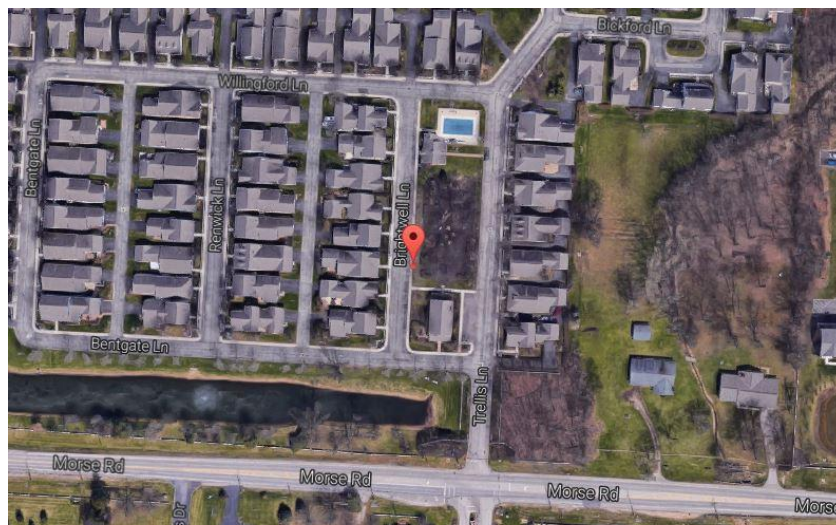
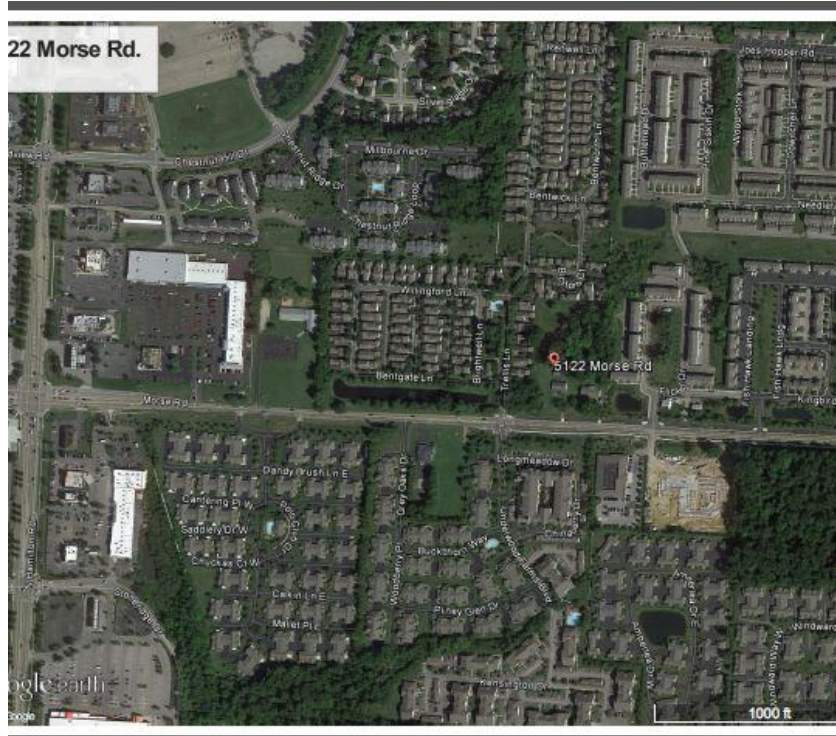
Tim Treasure, Principal, SIOR
1123 Goodale Blvd., Ste. 500
Columbus, OH 43212
TTreasure@treasureandassociates.com

Mike Bockbrader, Senior Advisor
1123 Goodale Blvd., Ste. 500
Columbus, OH 43212
Mike@treasureandassociates.com



5122 Morse Rd.

Columbus, OH 43230

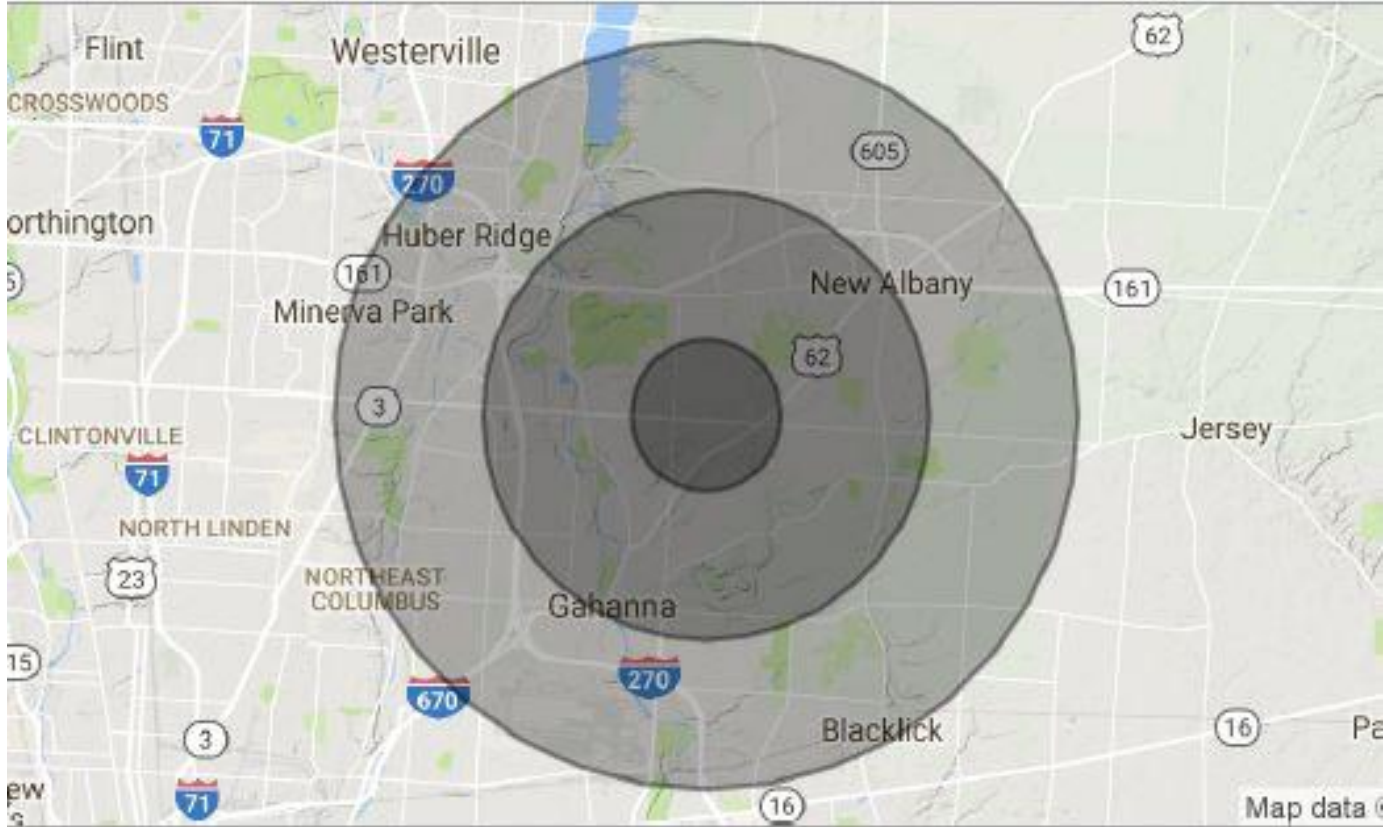


Tim Treasure, Principal, SIOR
1123 Goodale Blvd., Ste. 500
Columbus, OH 43212
TTreasure@treasureandassociates.com

Mike Bockbrader, Senior Advisor
1123 Goodale Blvd., Ste. 500
Columbus, OH 43212
Mike@treasureandassociates.com



Demographics



POPULATION	1 MILE	3 MILES	5 MILES
TOTAL POPULATION	7,163	51,485	130,626
MEDIAN AGE	37.2	37.8	35.9
MEDIAN AGE [MALE]	36.1	37.1	35.1
MEDIAN AGE [FEMALE]	37.7	38.3	36.6

HOUSEHOLDS & INCOME	1 MILE	3 MILES	5 MILES
TOTAL HOUSEHOLDS	3,007	21,740	53,528
# OF PERSONS PER HH	2.4	2.4	2.4
AVERAGE HH INCOME	\$96,717	\$96,694	\$86,296
AVERAGE HOUSE VALUE	\$245,074	\$309,898	\$256,556

Tim Treasure, Principal, SIOR
 1123 Goodale Blvd., Ste. 500
 Columbus, OH 43212
 TTreasure@treasureandassociates.com

Mike Bockbrader, Senior Advisor
 1123 Goodale Blvd., Ste. 500
 Columbus, OH 43212
 Mike@treasureandassociates.com



Traffic Count - Close Up

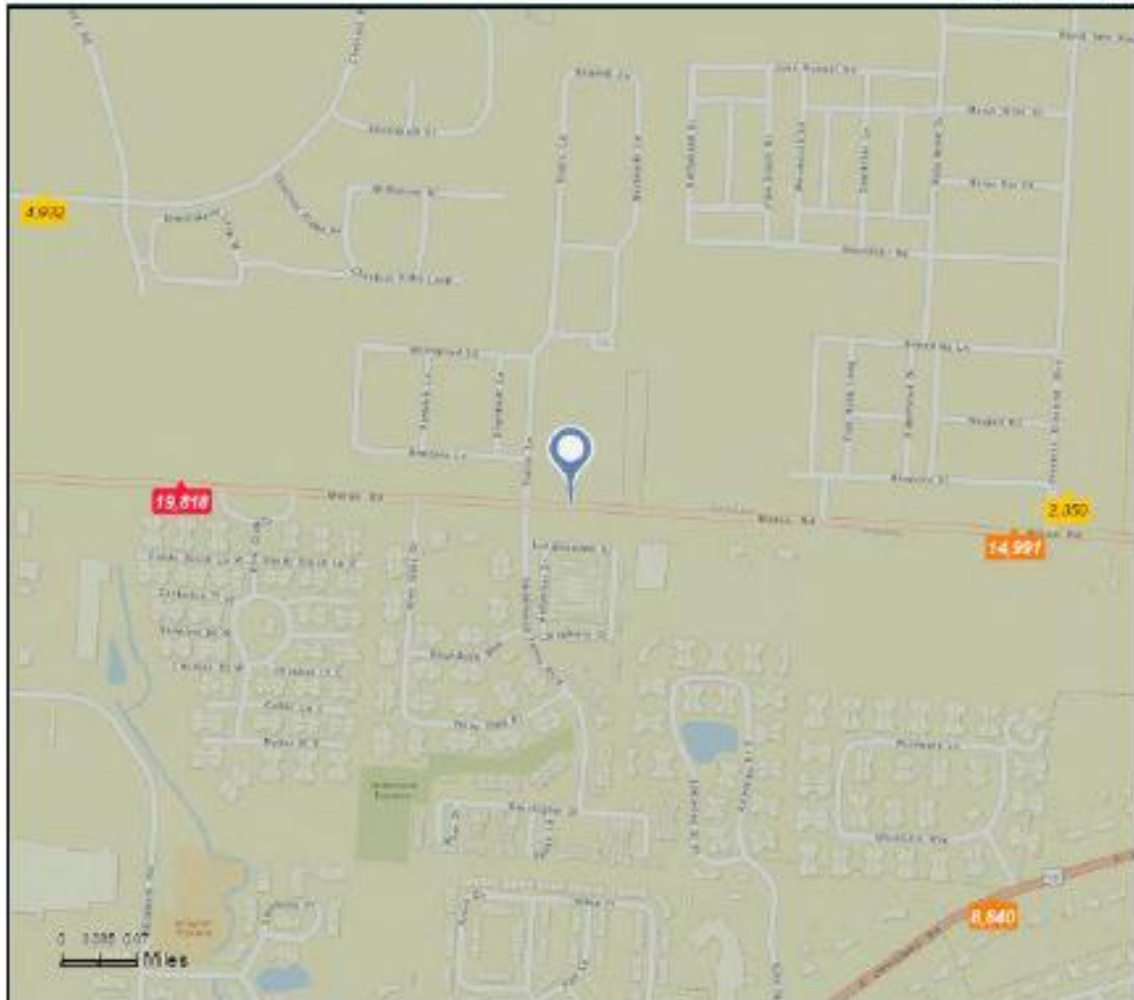


esri

Traffic Count Map - Close Up

5122 Horse Rd, Columbus, Ohio, 43230
 Rings: 1, 3, 5 mile radii

Prepared by Esri
 Latitude: 40.05498
 Longitude: -82.85577



- Average Daily Traffic Volume**
- ▲ Up to 6,000 vehicles per day
 - ▲ 6,001 - 15,000
 - ▲ 15,001 - 30,000
 - ▲ 30,001 - 50,000
 - ▲ 50,001 - 100,000
 - ▲ More than 100,000 per day



Tim Treasure, Principal, SIOR
 1123 Goodale Blvd., Ste. 500
 Columbus, OH 43212
 TTreasure@treasureandassociates.com

Mike Bockbrader, Senior Advisor
 1123 Goodale Blvd., Ste. 500
 Columbus, OH 43212
 Mike@treasureandassociates.com



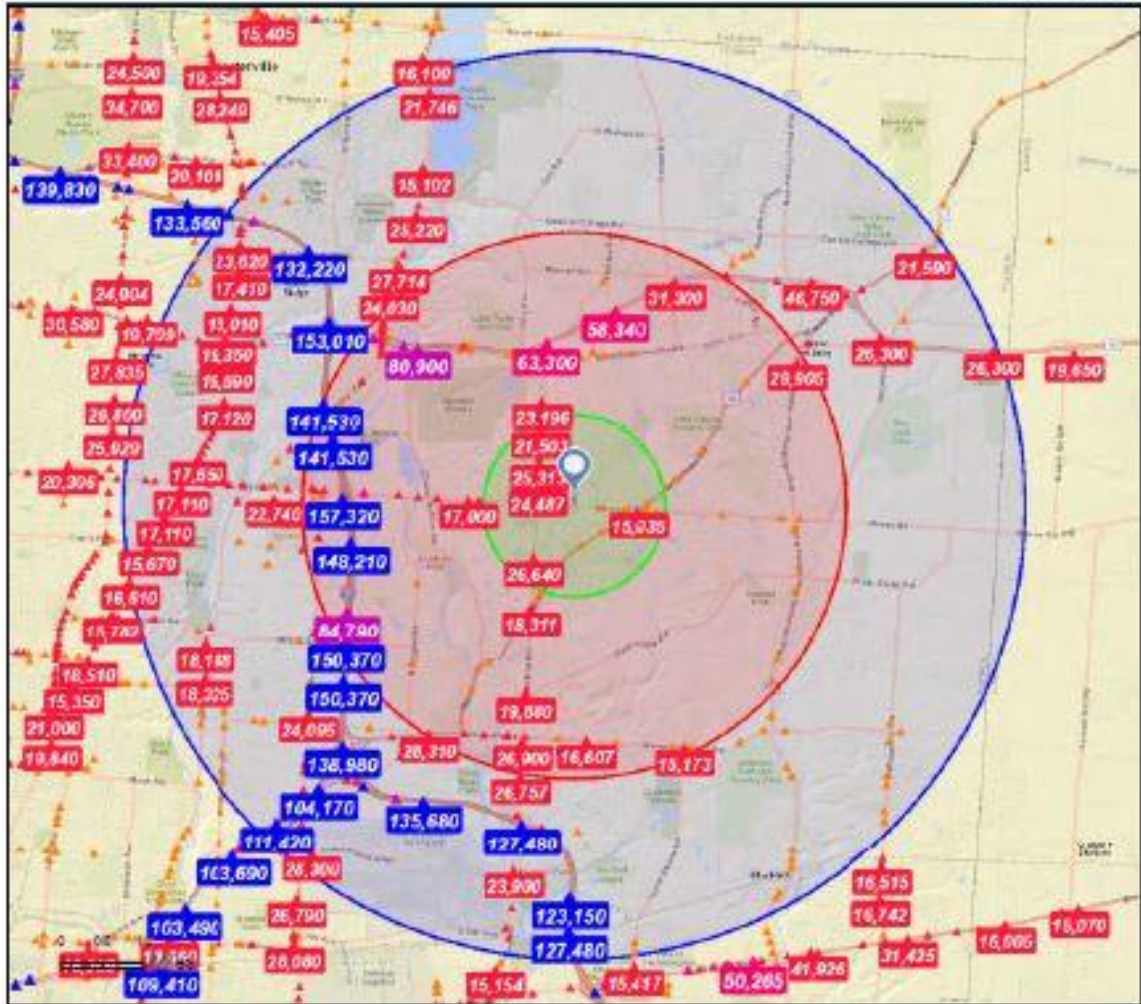
Traffic Count - Close Up



Traffic Count Map

5122 Morse Rd, Columbus, Ohio, 43230
 Rings: 1, 3, 5 mile radii

Prepared by Esri
 Latitude: 40.05498
 Longitude: -82.85577



Sources: ©2016 Kalibrate Technologies

- Average Daily Traffic Volume**
- ▲ Up to 6,000 vehicles per day
 - ▲ 6,001 - 15,000
 - ▲ 15,001 - 30,000
 - ▲ 30,001 - 50,000
 - ▲ 50,001 - 100,000
 - ▲ More than 100,000 per day



Tim Treasure, Principal, SIOR
 1123 Goodale Blvd., Ste. 500
 Columbus, OH 43212
 TTreasure@treasureandassociates.com

Mike Bockbrader, Senior Advisor
 1123 Goodale Blvd., Ste. 500
 Columbus, OH 43212
 Mike@treasureandassociates.com



Treasure & Associates

COMMERCIAL REAL ESTATE

Brokerage | Tenant Representation | Consultation | Development

Tim Treasure

Biography



Tim has over twenty years of specialized tenant and landlord representation for Class A and Class B office buildings in Central Ohio (Columbus, Ohio MSA). Tim began his commercial real estate career in July 1994, with a primary focus in office leasing and investment sales. In only his second year, Tim was awarded the prestigious “Rookie of the Year” award which is given annually by the Columbus Board of Realtors Commercial Investments Section for transactions totaling over \$9,000,000. To date, Tim has leased (and/or sold) commercial real estate transactions totaling over \$100,000,000. In 2006, Tim was awarded the SIOR designation and membership into the National Society of Industrial and Office Realtors. This designation is awarded to approximately ten (10) percent of the industry. Tim has negotiated multiple transactions on behalf of Johnson Controls, Inc., McDonald’s Corporation, Pitney Bowes, Inc., Batelle Pulmonary Therapeutics, Inc. Norman Jones Enlow and Co., Advanced Data Processing Inc., Dismas Distribution, Libertas Wealth Management, Columbus First Bank, Baez Azimuth Ltd., Miller 3 & 37 LLC, Vertical Adventures, Creative Palette, Appian Manufacturing, Eye Columbus LLC, Your Pie, and The Shepard Law Firm.

Tim is a certified member of SIOR (Society of Industrial and Office Realtors) which is a worldwide organization specializing in membership for highly successful commercial real estate salespersons, brokers and developers. Formerly, Tim was a nine year member of the City of Grandview Heights, OH board of zoning appeals and former board member of the Recognition Committee and Chairperson of the Education Committee at the Columbus Board of Realtors. In addition Tim served two consecutive terms as vestry member of Trinity Episcopal Church in Columbus, OH. Tim was chairperson for both terms for the stewardship program and was responsible for securing pledges for the church.

Personally, Tim is happily married to wife, Anne for more than thirty years and is proud to be the father of four children. Anne and Tim reside in Grandview Heights, Ohio.

Specialties

- Sale - Industrial
- Sale - Land
- Sale - Multifamily/Apartment
- Sale - Office
- Lease - Industrial
- Lease - Miscellaneous
- Lease - Office
- Lease - Retail
- Lease - Tenant Representation

Tim Treasure, Principal, SIOR
1123 Goodale Blvd., Ste. 500
Columbus, OH 43212
TTreasure@treasureandassociates.com

Mike Bockbrader, Senior Advisor
1123 Goodale Blvd., Ste. 500
Columbus, OH 43212
Mike@treasureandassociates.com



Mike Bockbrader

Biography



Mike Bockbrader is a Licensed Real Estate Agent and Senior Advisor with Treasure & Associates. He received his Bachelors of Business Administration Degree in Marketing from The University of Toledo. Mike comes to us with more than 25 years of strong negotiation experience having conducted multi-million dollar contract negotiations both domestically and internationally for companies such as JPMorgan Chase, Nationwide Insurance, Huntington National Bank and Battelle Memorial Institute. Mike is also a real estate investor and has the experience needed to research and locate solid investment properties. He recently worked with SVN, Wilson Commercial Group, LLC in February 2016 and eager to advise and assist you in the Sales and Leasing of all Real Estate asset types.

Personally, Mike is happily married to his wife Elizabeth and is a proud father of two children Caroline and Beck. Mike and his family reside in Grandview Heights, Ohio.

Specialties

- Sale - Corporate Sales
- Sale - Industrial
- Sale - Land
- Sale - Multifamily/Apartment
- Sale - Office
- Sale - Retail
- Lease - Tenant Representation

Tim Treasure, Principal, SIOR
1123 Goodale Blvd., Ste. 500
Columbus, OH 43212
TTreasure@treasureandassociates.com

Mike Bockbrader, Senior Advisor
1123 Goodale Blvd., Ste. 500
Columbus, OH 43212
Mike@treasureandassociates.com