

LAND

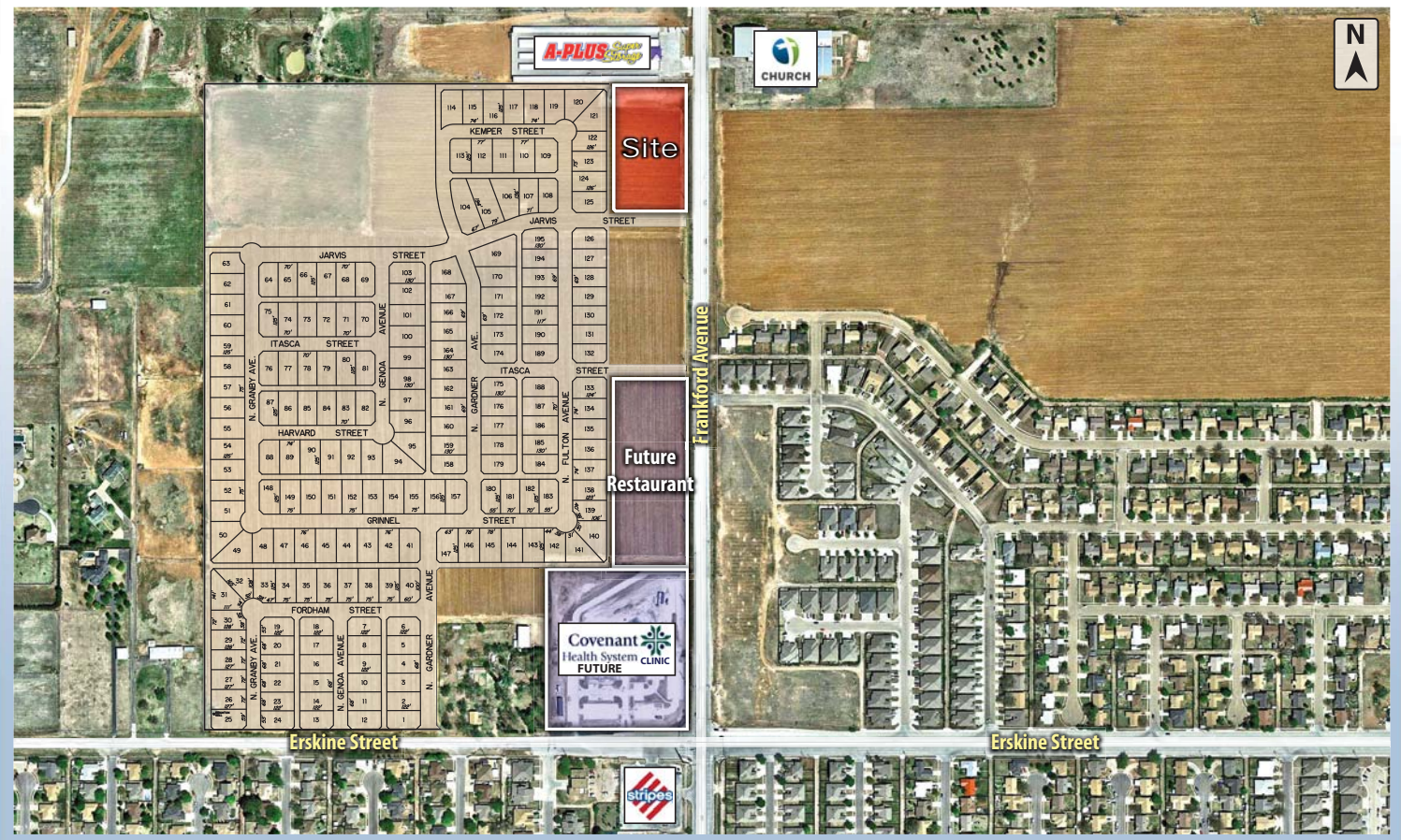
FOR SALE



COLDWELL  
BANKER  
COMMERCIAL

CAPITAL ADVISORS

700 N FRANKFORD AVENUE  
LUBBOCK, TX 79416



## PROPERTY INFORMATION

**LOCATION:**

A rectangular shaped tract of land in a developing area of northwest Lubbock with frontage on Frankford Avenue.

**DESCRIPTION:**

This tract is just north of Erskine Street and situated on the west side of Frankford Avenue.

**CITY LIMITS:**

Inside the Lubbock city limits

**FLOOD ZONE:**

Not in flood zone

**ZONING:**

C-2

**SIZE:**

3.192 Acres

**SALES PRICE:**

\$625,695.84 (\$4.50 per SF)



Beau Tucker, CCIM  
The Land Man  
806.784.3298 direct  
806.470.3944 cell  
BTucker@CBCWorldwide.com

# AERIAL



## DEMOGRAPHICS

POPULATION	1 MILE	3 MILES	5 MILES
TOTAL POPULATION	3,519	38,374	99,689
AVERAGE AGE	24.0	27.4	27.0
AVERAGE AGE (MALE)	24.1	27.0	26.7
AVERAGE AGE (FEMALE)	24.1	28.3	28.1
HOUSEHOLDS & INCOME	1 MILE	3 MILES	5 MILES
TOTAL HOUSEHOLDS	1,242	14,713	36,694
# OF PERSONS PER HH	2.8	2.6	2.7
AVERAGE HH INCOME	\$48,148	\$59,605	\$51,191
AVERAGE HOUSE VALUE	\$115,223	\$139,613	\$130,812

### Mini-Map and Location

