

FOR SALE OR LEASE



761

**CORPORATE
CENTER DRIVE**

Pomona, CA 91768

For Sale Inquiries:

Ryan Campbell

Executive Managing Director

909.348.0606

rcampbell@naicapital.com

CA BRE Lic. #01341826

NAICapital

Commercial Real Estate Services, Worldwide.

For Lease Inquiries:

Sean Kern

Senior Director, Brokerage

909.942.4691

sean.kern@cushwake.com

CA BRE Lic. #01377294



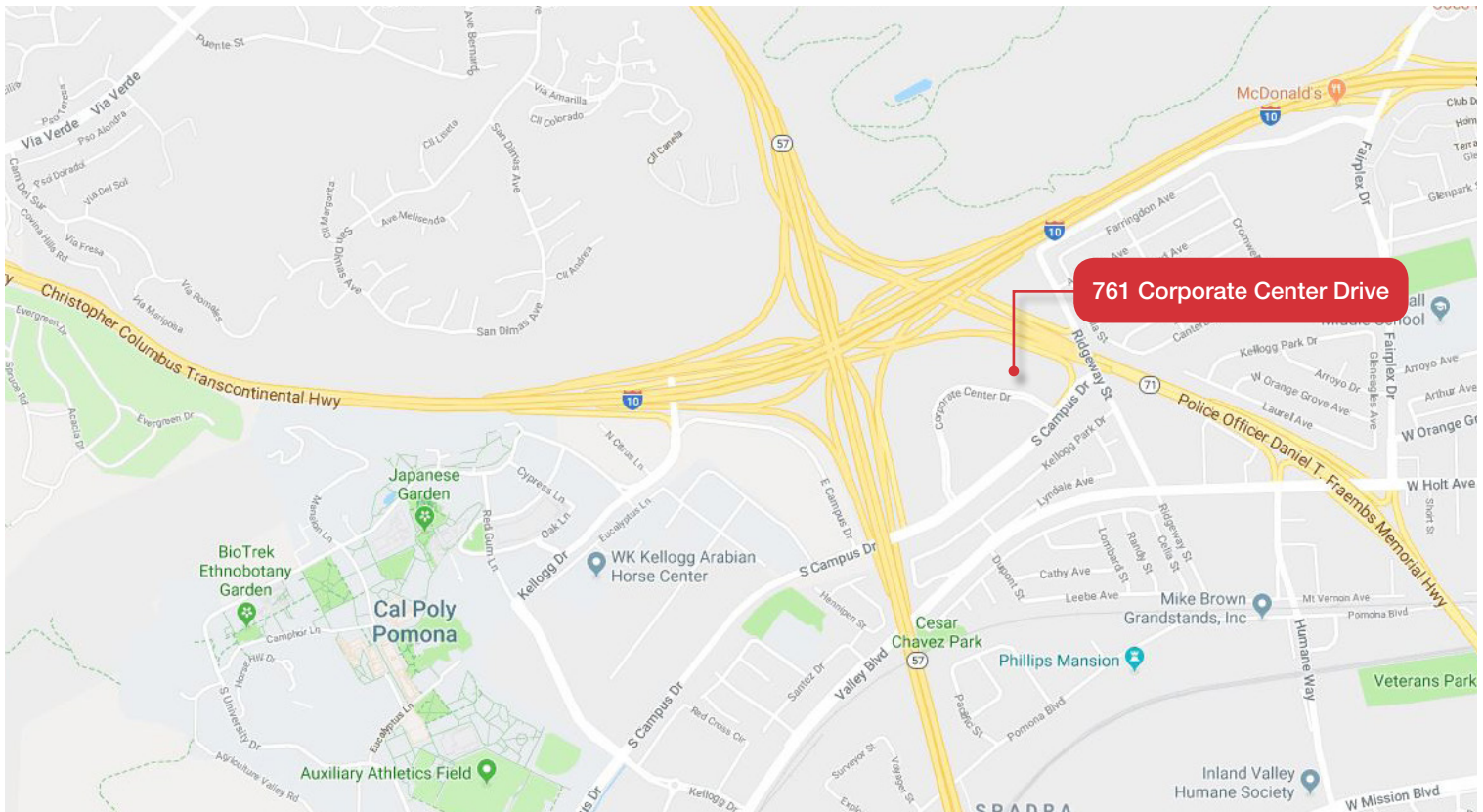
**CUSHMAN &
WAKEFIELD**

EXECUTIVE SUMMARY



Property Summary

Address:	761 Corporate Center Drive Pomona, CA 91768	Year Built:	1985
Sale Price:	\$8,500,000 (\$134/SF)	Parking:	230 spaces
Lease Price:	Negotiable	Occupancy:	0%
Total Size (RSF):	63,204 SF	Loading Doors:	1 dock high, 1 ground level
1st Floor (RSF):	31,628 SF (including 4,236 SF of warehouse space)	Elevator:	1
2nd Floor (RSF):	31,576 SF	Zoning:	KP-1, Kellogg Plaza Specific Plan
Site Size (Acres):	3.42 Acres		



For Sale Inquiries:



Ryan Campbell
Executive Managing Director
909.348.0606 | rcampbell@naicapital.com
CA BRE Lic. #01341826

For Lease Inquiries:

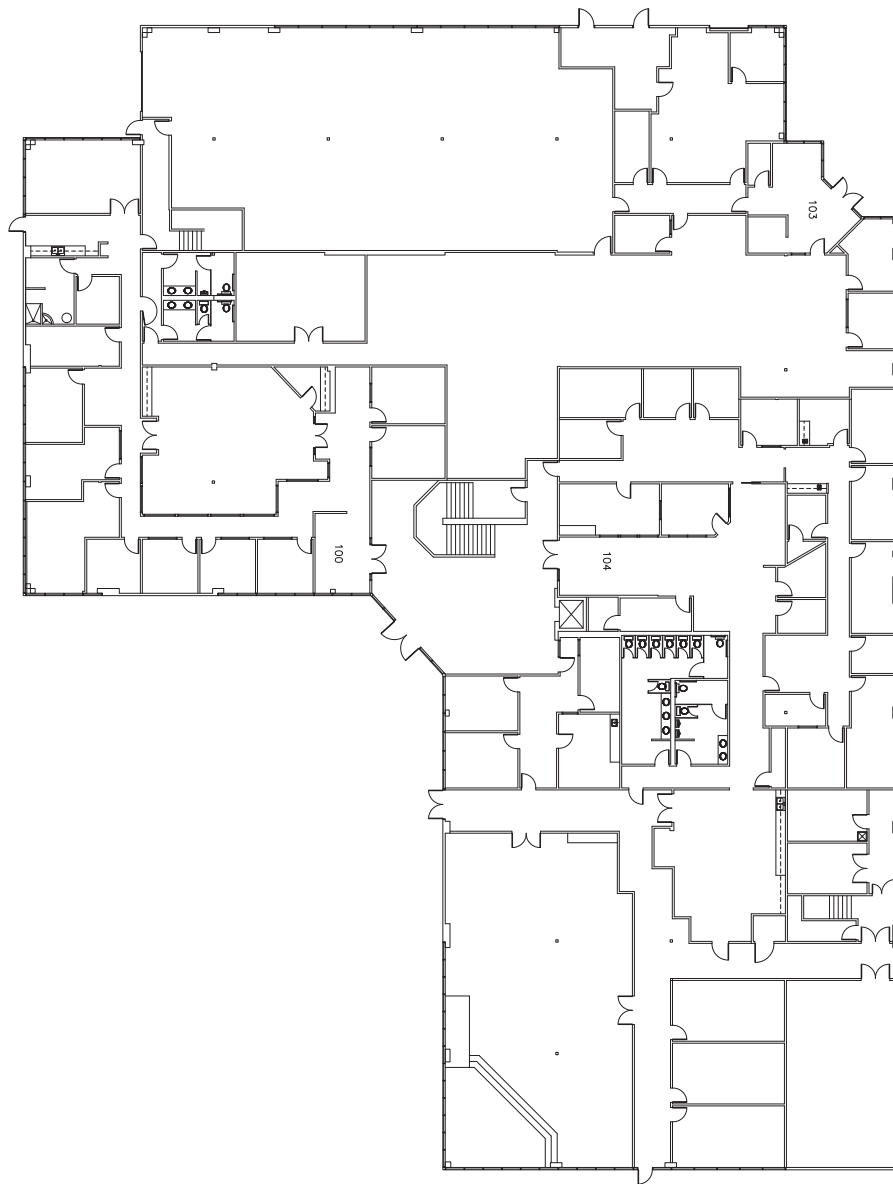


Sean Kern
Senior Director, Brokerage
909.942.4691 | sean.kern@cushwake.com
CA BRE Lic. #01377294

FLOOR PLANS



1st Floor



For Sale Inquiries:



Ryan Campbell
Executive Managing Director
909.348.0606 | rcampbell@naicapital.com
CA BRE Lic. #01341826

For Lease Inquiries:

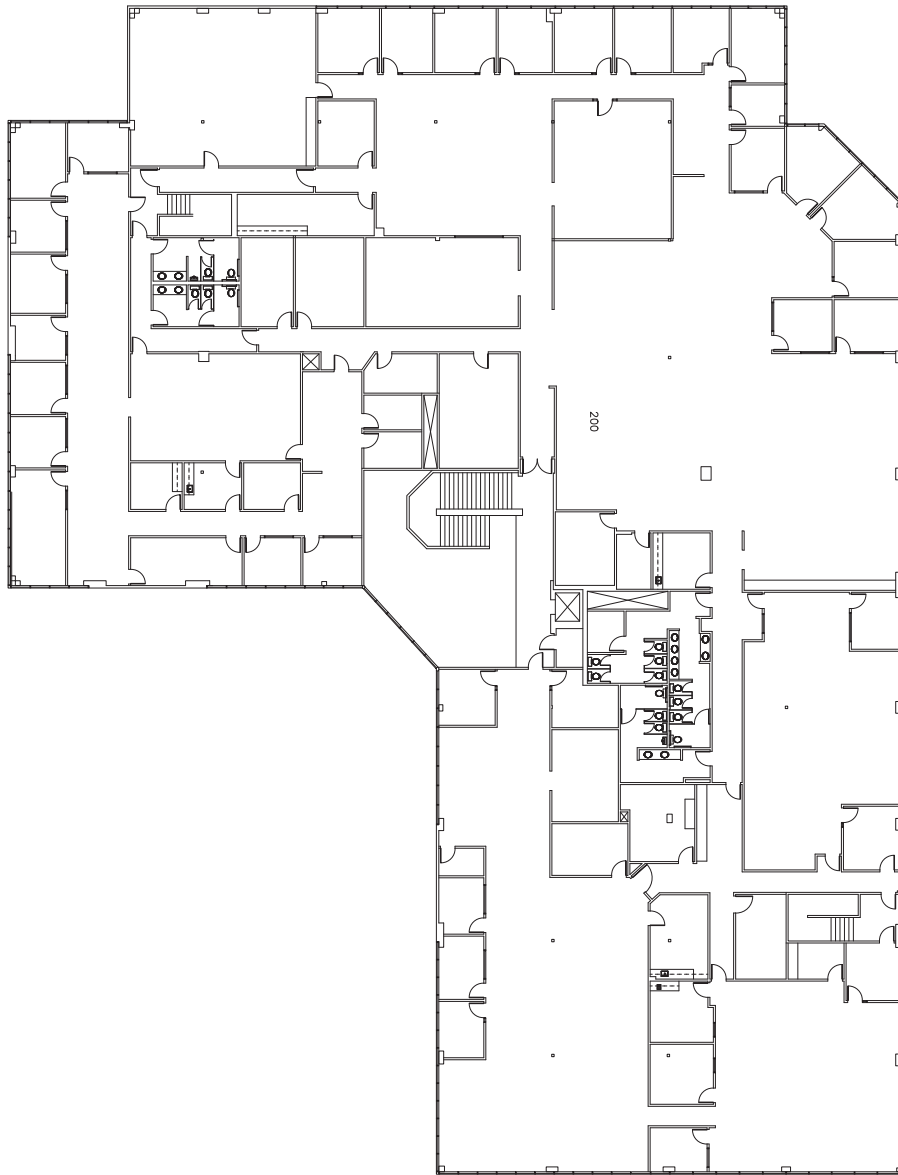


Sean Kern
Senior Director, Brokerage
909.942.4691 | sean.kern@cushwake.com
CA BRE Lic. #01377294

FLOOR PLANS



2nd Floor



For Sale Inquiries:



Ryan Campbell
Executive Managing Director
909.348.0606 | rcampbell@naicapital.com
CA BRE Lic. #01341826

For Lease Inquiries:



Sean Kern
Senior Director, Brokerage
909.942.4691 | sean.kern@cushwake.com
CA BRE Lic. #01377294