



# TOWER REALTY CORP.

SPECIALISTS IN COMMERCIAL AND INDUSTRIAL REAL ESTATE

**~ LAND LEASE or BUILD TO SUIT ~**  
**RETAIL/RESTAURANT APPROVED**



## 32 Danbury Road (Route 7), New Milford, CT



Great location on Rte. 7 near New Milford bridge with super visibility and 614 ft. frontage on Route 7. Approved for retail/restaurant. Optional "build to suit."

### Property Highlights

- Size: +/- 2.82 Acres (Per Survey)
- +/- 27,800 vehicles daily (2011)
- Frontage: +/- 614 Ft. on Route 7
- Zoning: B-2
- Approved for +/- 1,800 Sq. Ft. Retail/Restaurant
- Utilities: City Water, Sewer and Gas Available

Land Lease Price: \$48,000 NNN



### FOR MORE INFORMATION CONTACT

Mick Consalvo  
mconsalvo@towercorp.com

246 Federal Rd. D26 P.O. Box 5242 Brookfield, CT 06804  
Tel: (203) 775-5000 • Fax: (203) 775-7199  
www.towercorp.com

No warranty of representation, expressed or implied is made as to the accuracy of the information contained herein, and same is submitted subject to errors, omissions, change of price, rental, sale or other conditions, withdrawal without notice, and to any special listing conditions imposed by our principals.

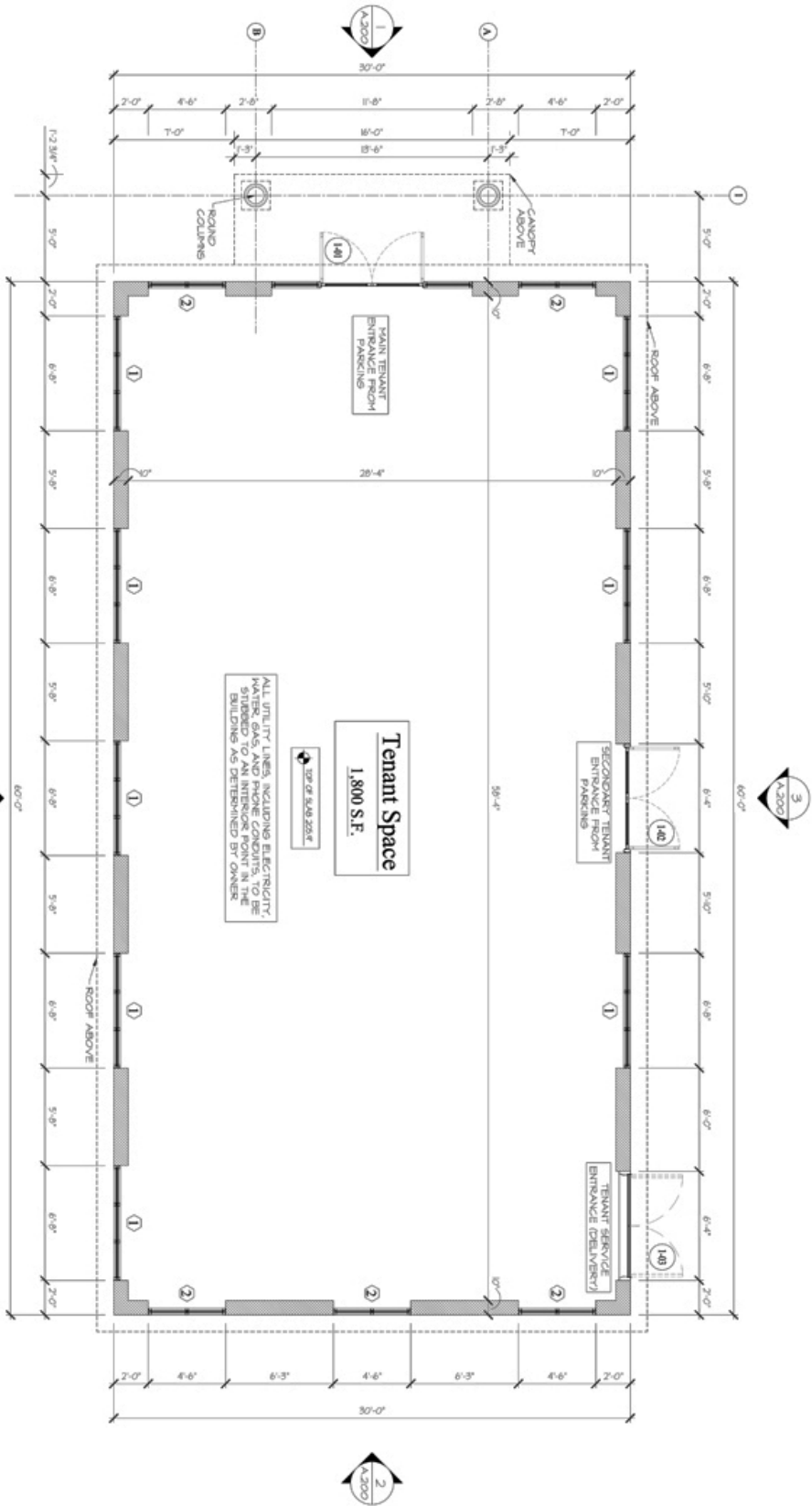


Scan this image with your smart phone to get our latest exclusive listings.



Scan this image with your smart phone to join our VIP email list for market updates and property listings.





**1** APPROVED FLOOR PLAN  
1/8" = 1'-0"

