



THE HARTSHORNE MANSION FOR LEASE: PROFESSIONAL OFFICE SUITES



535 N. CHURCH STREET | WEST CHESTER, PA 19380



PILLAR REAL ESTATE ADVISORS

P: 484-887-8202 | www.PillarRealEstateAdvisors.com

535 N. Church Street, West Chester, PA 19380

Professional Office Suites

at The Hartshorne Mansion

This beautiful historic building is located in the heart of West Chester, walking distance over 50 retail locations and restaurants

Now Available for Lease



PROPERTY FEATURES

- Join The Hartshorne Mansion's Professional Office Complex
- Amenities Included:
 - Conference Rooms Available to all Tenants
 - Kitchenette on Each Floor with Refrigerator, Microwave & Sink
 - +/- 50 Parking Spots Available at On-Site Parking Lot
 - Large outdoor areas, including a newly renovated wrap around deck, available for outdoor meetings.
 - Common area's cleaned regularly and held to high health and safety standards
 - Conservatory Lounge & Coffee Bar
 - +/- 60 Retail/Restaurants within Walking Distance
- All Inclusive Rental Rates

535 N. CHURCH STREET | WEST CHESTER, PA 19380



PILLAR REAL ESTATE ADVISORS

P: 484-887-8202 | www.PillarRealEstateAdvisors.com

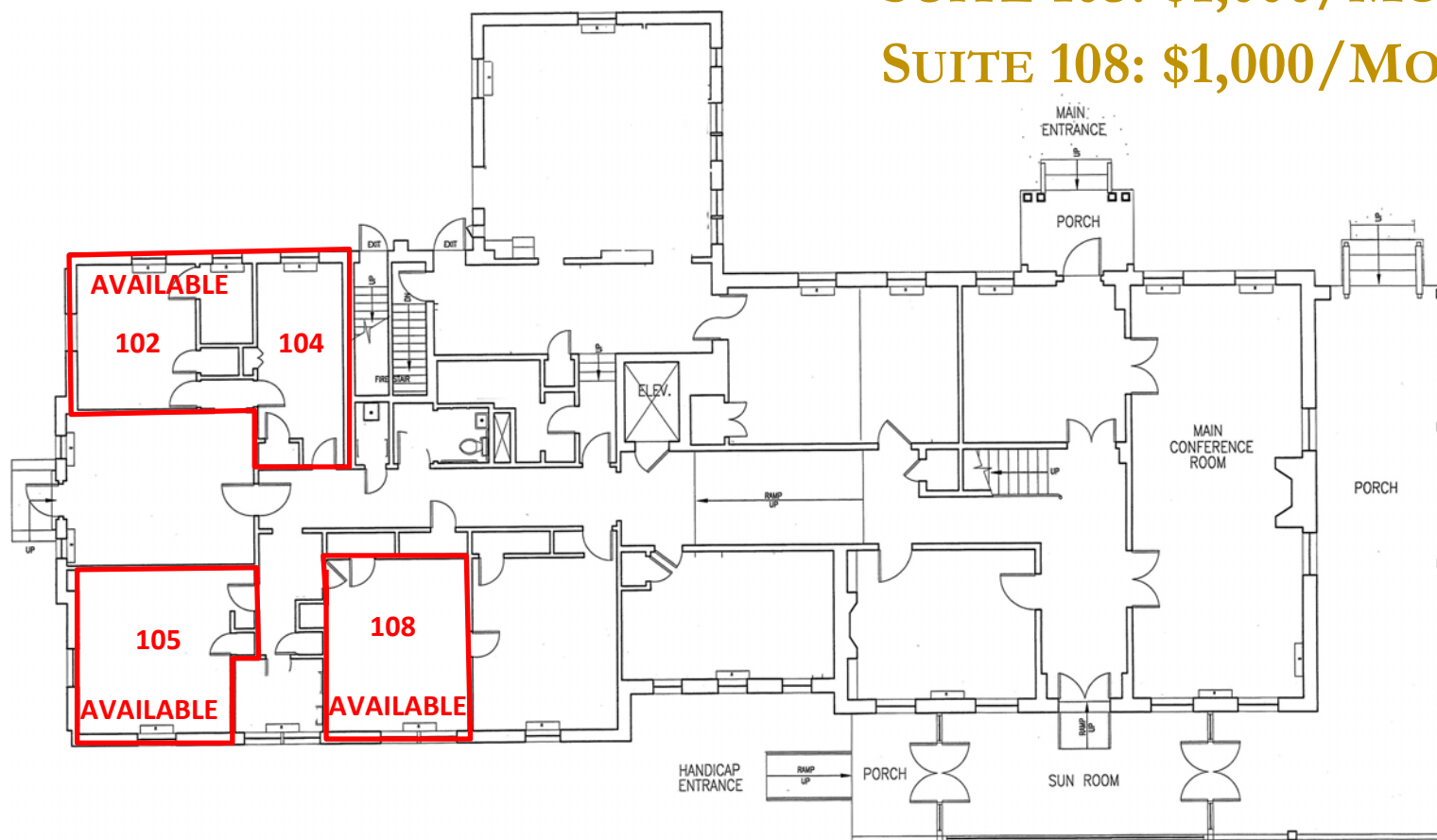
535 N. Church Street, West Chester, PA 19380

FIRST FLOOR

SUITE 102-104: \$1,000/MONTH

SUITE 105: \$1,000/MONTH

SUITE 108: \$1,000/MONTH



535 N. CHURCH STREET | WEST CHESTER, PA 19380

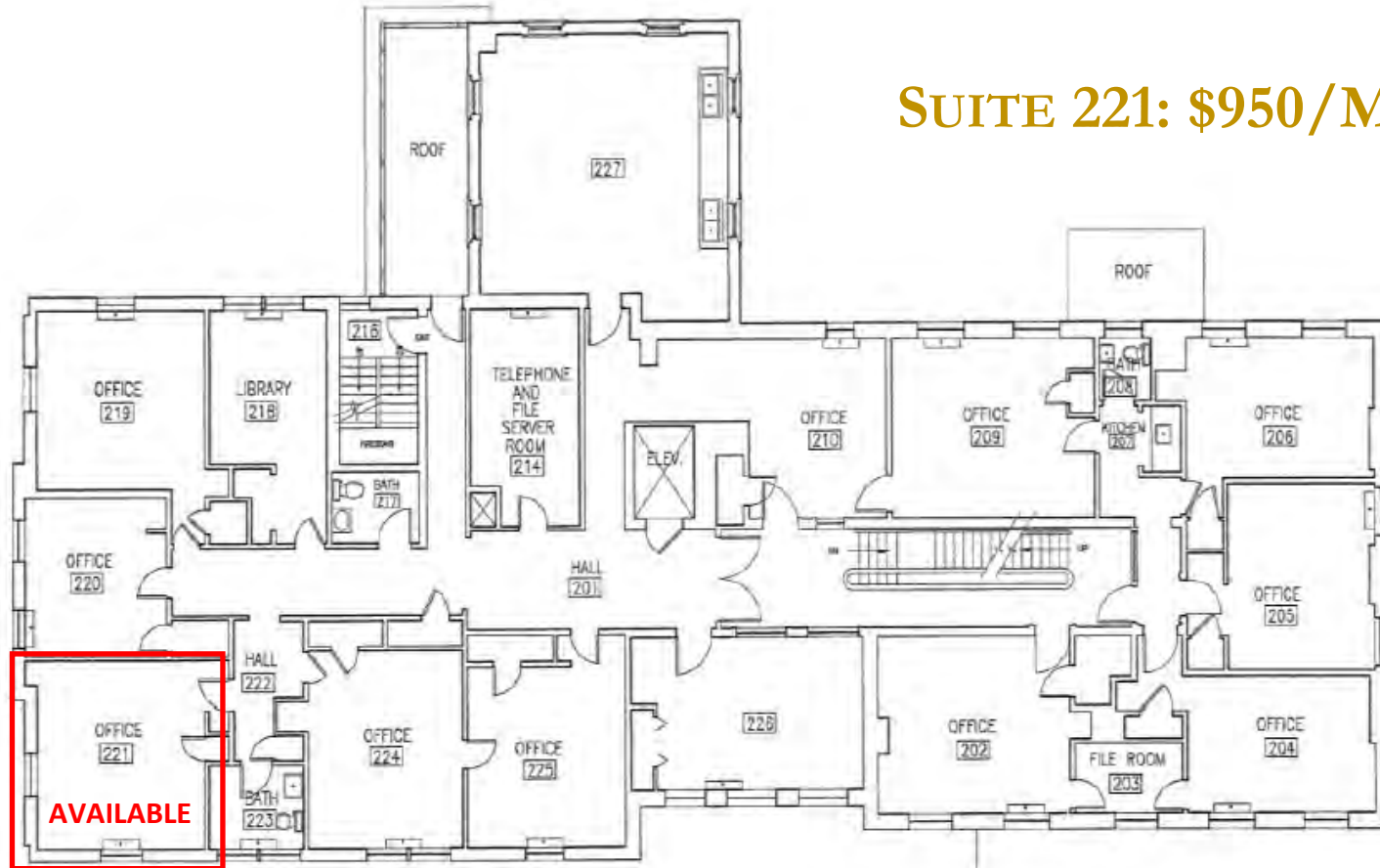


PILLAR REAL ESTATE ADVISORS

P: 484-887-8202 | www.PillarRealEstateAdvisors.com

535 N. Church Street, West Chester, PA 19380

SUITE 221: \$950/MONTH



535 N. CHURCH STREET | WEST CHESTER, PA 19380



PILLAR REAL ESTATE ADVISORS

P: 484-887-8202 | www.PillarRealEstateAdvisors.com

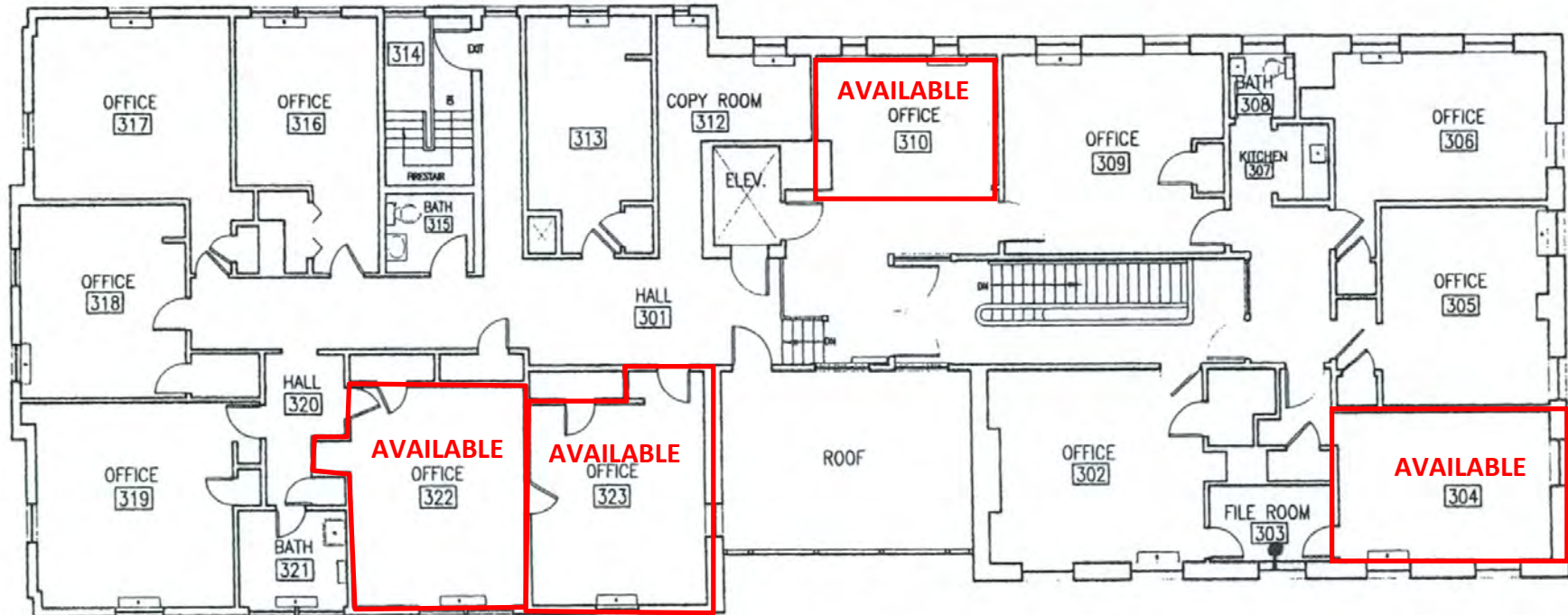
535 N. Church Street, West Chester, PA 19380

SUITE 304: \$1,000/MONTH

SUITE 322: \$925/MONTH

SUITE 310: \$825/MONTH

SUITE 323: \$1,025/MONTH



535 N. CHURCH STREET | WEST CHESTER, PA 19380



PILLAR REAL ESTATE ADVISORS

P: 484-887-8202 | www.PillarRealEstateAdvisors.com

535 N. Church Street, West Chester, PA 19380



535 N. CHURCH STREET | WEST CHESTER, PA 19380



PILLAR REAL ESTATE ADVISORS

P: 484-887-8202 | www.PillarRealEstateAdvisors.com

535 N. Church Street, West Chester, PA 19380



535 N. CHURCH STREET | WEST CHESTER, PA 19380

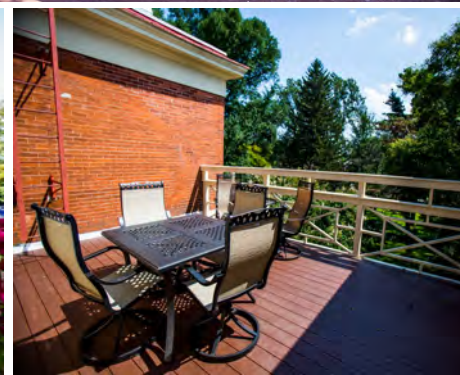


PILLAR REAL ESTATE ADVISORS

P: 484-887-8202 | www.PillarRealEstateAdvisors.com

535 N. Church Street, West Chester, PA 19380

THE HARTSHORNE MANSION FOR LEASE: PROFESSIONAL OFFICE SUITES



535 N. CHURCH STREET | WEST CHESTER, PA 19380



PILLAR REAL ESTATE ADVISORS

P: 484-887-8202 | www.PillarRealEstateAdvisors.com

535 N. Church Street, West Chester, PA 19380



THE HARTSHORNE MANSION FOR LEASE: PROFESSIONAL OFFICE SUITES

PILLAR REAL ESTATE ADVISORS

BRINGING EXPERIENCE, PROFESSIONALISM, AND INTEGRITY
TO COMMERCIAL REAL ESTATE BROKERAGE

JAKE JEWELL

JJEWELL@PILLARREALESTATEADVISORS.COM
484-887-8202 | Ext. 105

ANDREW CARLINO

ACARLINO@PILLARREALESTATEADVISORS.COM
484-887-8202 | Ext. 103

ERIC KUHN

EKUHN@PILLARREALESTATEADVISORS.COM
484-887-8202 | Ext. 101

ANDREW TURNER

ATURNER@PILLARREALESTATEADVISORS.COM
484-887-8202 | Ext. 102

"The information contained in this document has been obtained from sources believed reliable. While Pillar Real Estate Advisors, LLC does not doubt its accuracy, Pillar Real Estate Advisors, LLC. has not verified it and makes no guarantee, warranty or representation about it. It is your responsibility to independently confirm its accuracy and completeness. Any projections, opinions, assumptions or estimates used are for example only and do not represent the current or future performance of the property. The value of this transaction to you depends on several factors which should be evaluated by your tax, financial and legal advisors to determine to your satisfaction the suitability of the property for your needs.

Photos herein are the property of their respective owners and use of these images without the express written consent of the owner is prohibited."

535 N. CHURCH STREET | WEST CHESTER, PA 19380



PILLAR REAL ESTATE ADVISORS

P: 484-887-8202 | www.PillarRealEstateAdvisors.com

535 N. Church Street, West Chester, PA 19380