

STONE REAL ESTATE

200 SOUTH MICHIGAN AVENUE



4,000
Square feet available



70K
Population in a
one mile radius



489K
Daytime population in
a one mile radius

Work of Art Meets the Art Institute

PROPERTY DESCRIPTION

22 story, 359,560 rsf office building across from The Art Institute of Chicago and adjacent to Symphony Center. Located amidst these cultural attractions, several colleges and universities, other office buildings, a growing residential base and different modes of public transportation, 200 S. Michigan offers retailers a diverse consumer base with strong pedestrian counts.



\$133K
Average income in
a one mile radius



43K
Households in a
one mile radius

AVAILABLE SPACE

4,000 sf

AREA UNIVERSITIES & COLLEGES

DePaul University, Art Institute of Chicago, John Marshall Law School, Roosevelt University, American Academy of Art.

AREA OFFICE TENANTS

Skidmore Owings & Merrill, NORC at the University of Chicago, Sargent & Lundy, Goettsch Partners, Gensler, Motorola Solutions, Sprout Social, Johnson Publishing Co., Howard & Howard, and Hyper Marketing.

AREA COMMERCIAL TENANTS



42K
Vehicles per day
at the intersection

EXCLUSIVE AGENTS

John Vance 312/782-1373
jvance@stonerealestate.com

William Winter 312/878-9445
wwinter@stonerealestate.com

OWNED BY

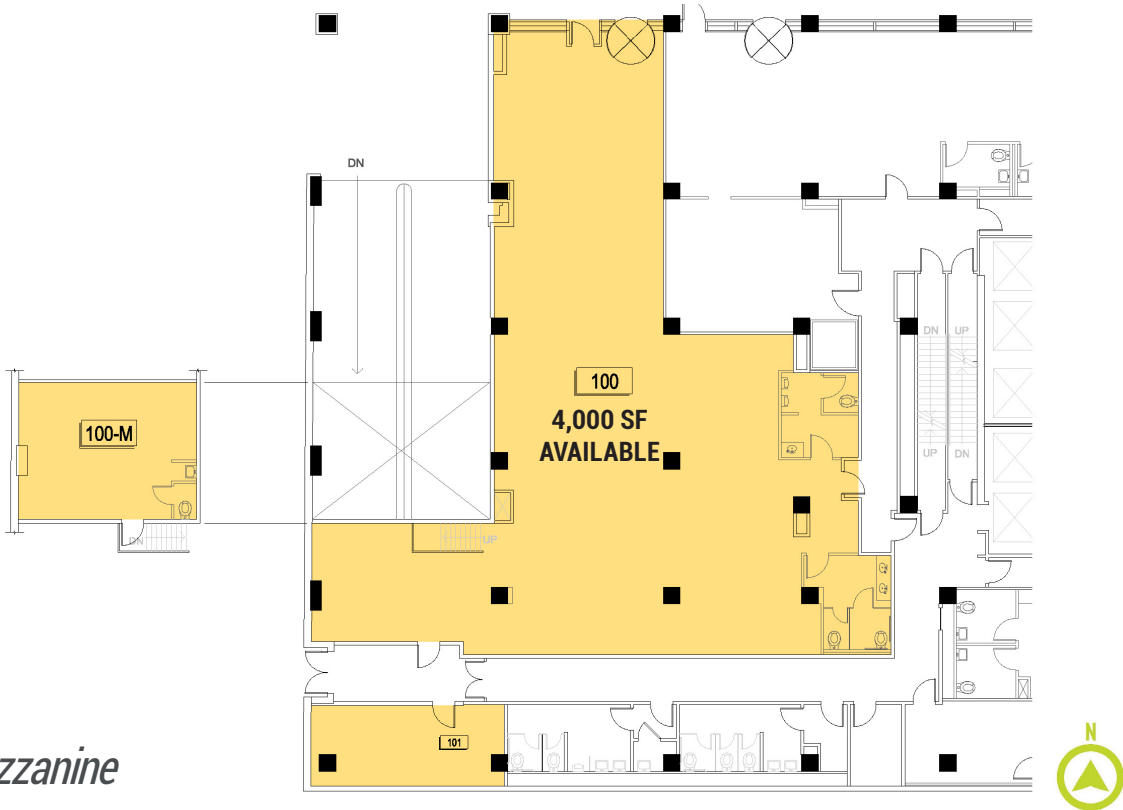
200 S Michigan LLC

MANAGED BY

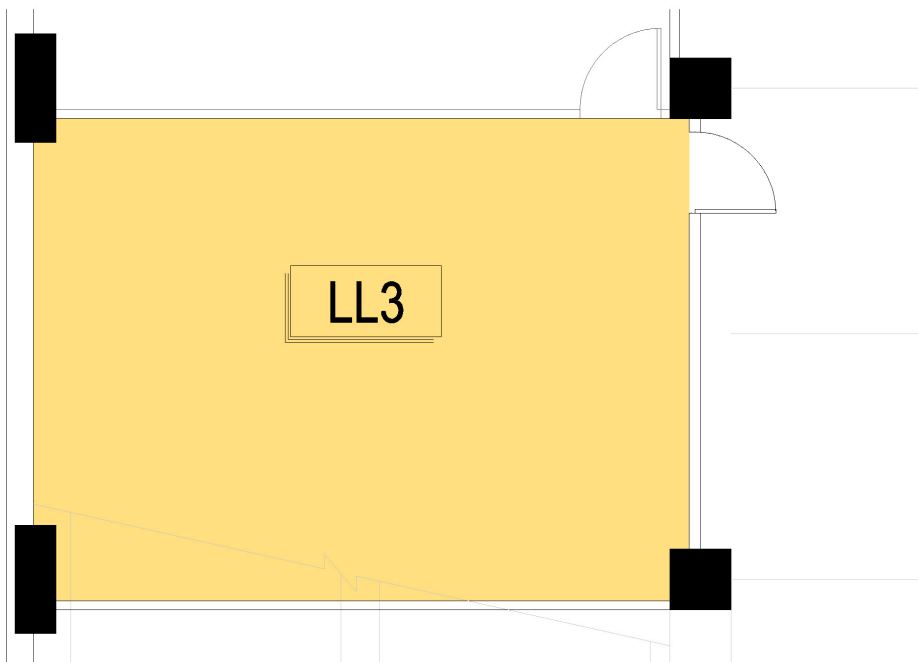
Sterling Bay

STONE | 20
REAL ESTATE | YEARS

200 SOUTH MICHIGAN AVENUE



Street & Mezzanine



Lower Level

EXCLUSIVE AGENTS

John Vance 312/782-1373
jvance@stonerealestate.com

William Winter 312/878-9445
wwinter@stonerealestate.com

OWNED BY

200 S Michigan LLC

MANAGED BY

Sterling Bay

STONE
REAL ESTATE

20
YEARS