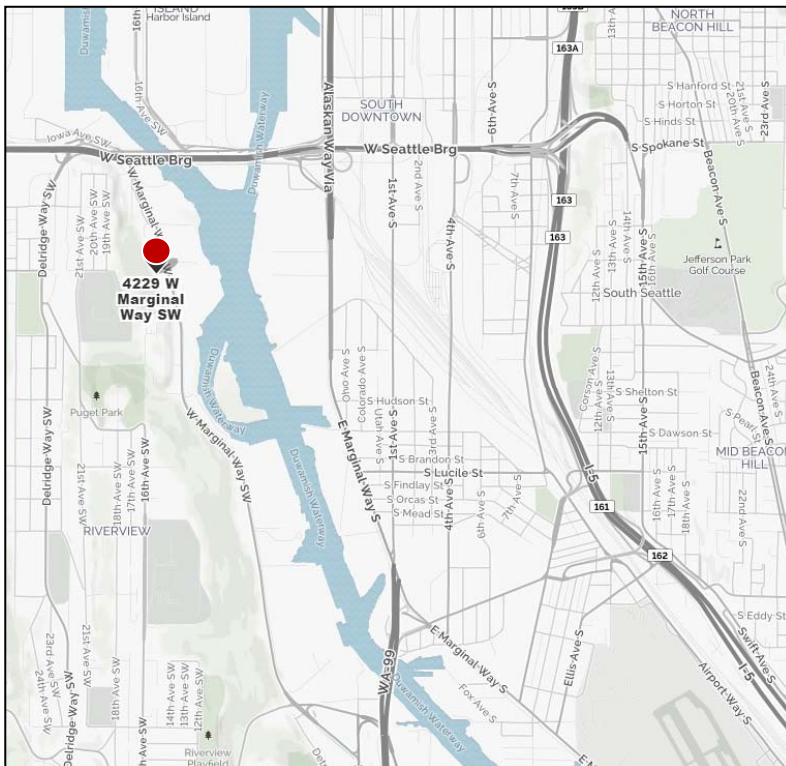


# Visko Building

4229-4233 W Marginal Way SW | Seattle, WA

**FOR  
LEASE**



## 2,750 SF OFFICE On West Marginal

**Lease Rate:** \$14.00/SF/YR, NNN

### PROPERTY HIGHLIGHTS

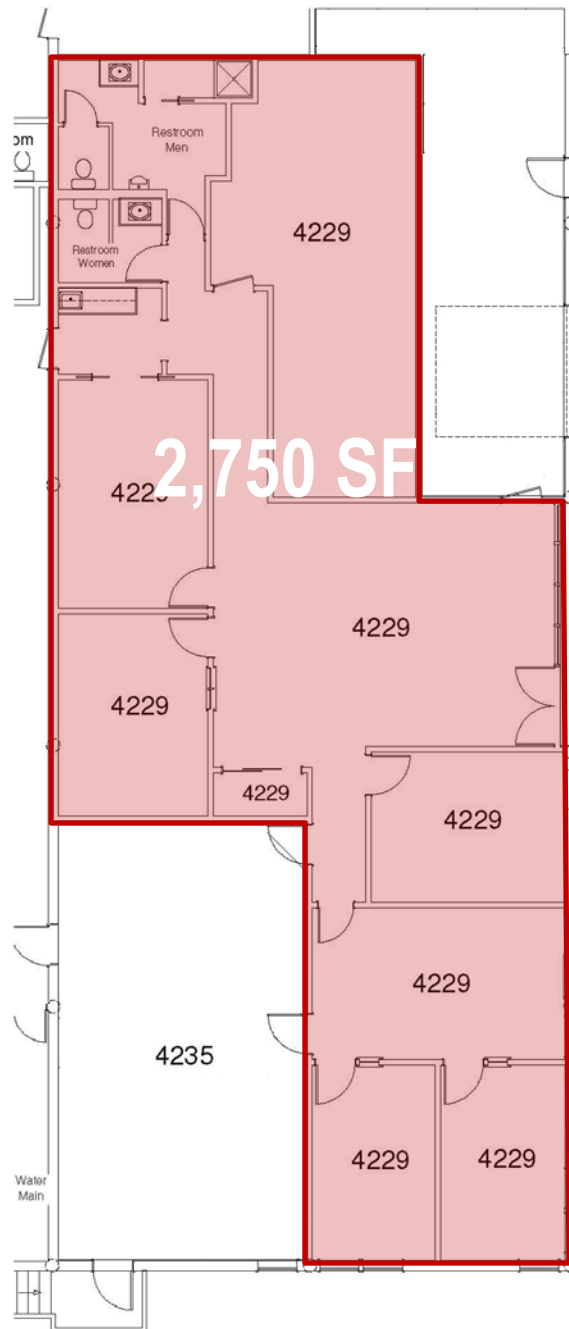
- 5 private offices
- Fenced lot with ample parking
- Potential outside storage
- Building signage available
- Traffic counts over 20,000 vehicles per day

**Kevin Skillestad**  
206.787.1460  
kskillestad@neilwalter.com

**NWC NEILWALTER**  
COMPANY  
COMMERCIAL REAL ESTATE SERVICES

# Visko Building

**FOR  
LEASE**



## CONTACT:

Kevin Skillestad

206.787.1460

[kskillestad@neilwalter.com](mailto:kskillestad@neilwalter.com)



Seattle Office: 550 S Michigan St | Seattle, WA 98108

[www.neilwalter.com](http://www.neilwalter.com)

All square footage references are approximate. The information contained herein is from sources deemed reliable. It is provided without representation, warranty or guarantee, expressed or implied as to its accuracy. Prospective Buyer or Tenant should conduct an independent investigation and verification of all matters.