



1600 Sherman Street

Denver, CO

SUBLEASE AVAILABLE



M. Gregory Bante
+1 303 260 6505
greg.bante@am.jll.com

Todd Roebken
+1 303 260 6528
todd.roebken@am.jll.com

Mike Deatly
+1 303 217 7970
mike.deatly@am.jll.com

Brady Alshouse
+1 303 260 6517
brady.alshouse@am.jll.com



DISCLAIMER

Although information has been obtained from sources deemed reliable, Owner, Jones Lang LaSalle, and/or their representatives, brokers or agents make no guarantees as to the accuracy of the information contained herein, and offer the Property without express or implied warranties of any kind. The Property may be withdrawn without notice. If the recipient of this information has signed a confidentiality agreement regarding this matter, this information is subject to the terms of that agreement. ©2014. Jones Lang LaSalle. All rights reserved.

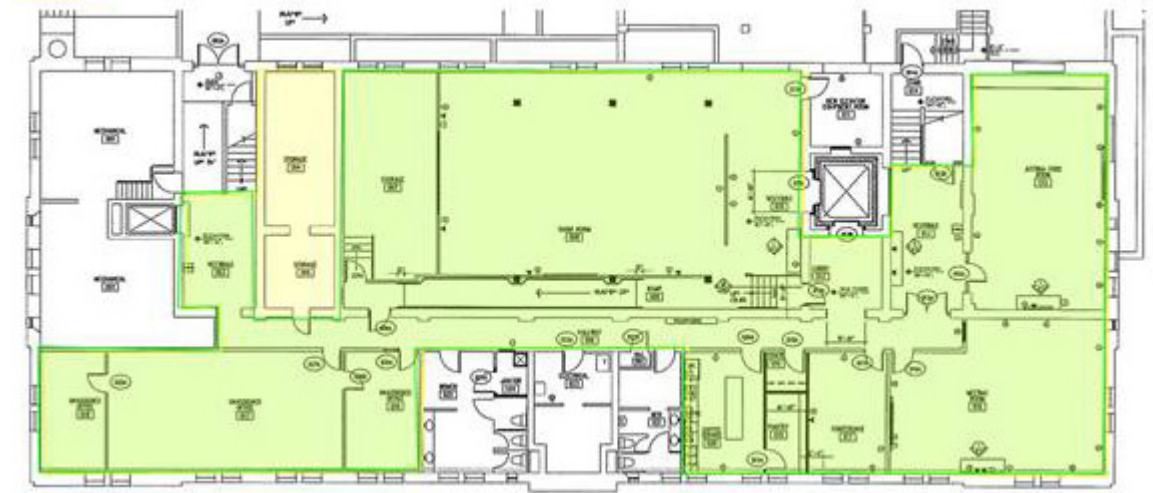
jll.com/denver



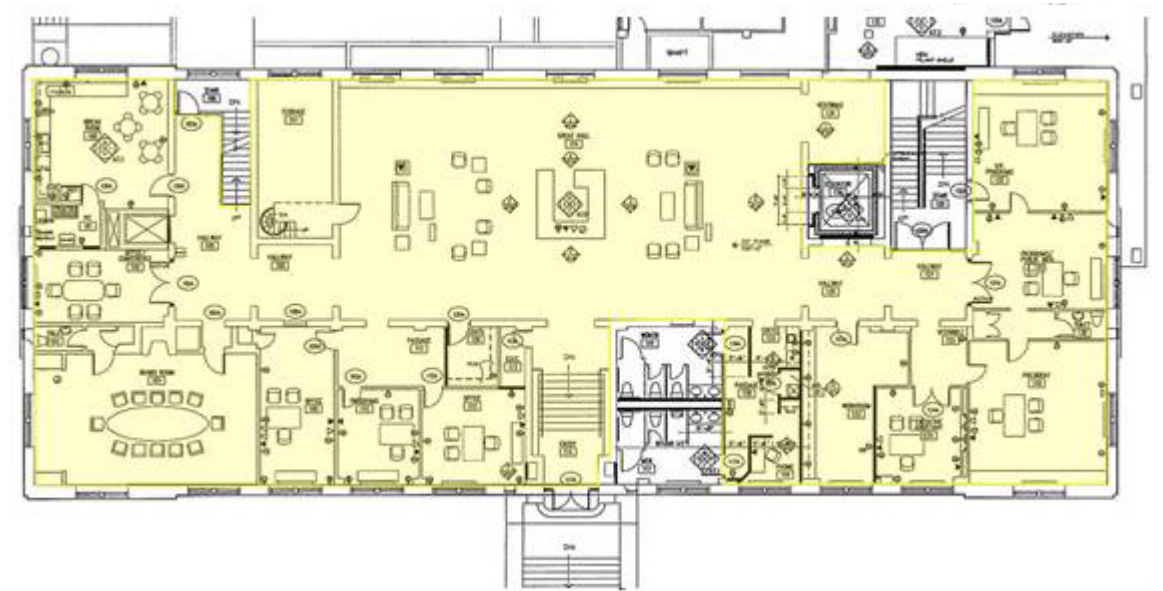
jll.com/denver



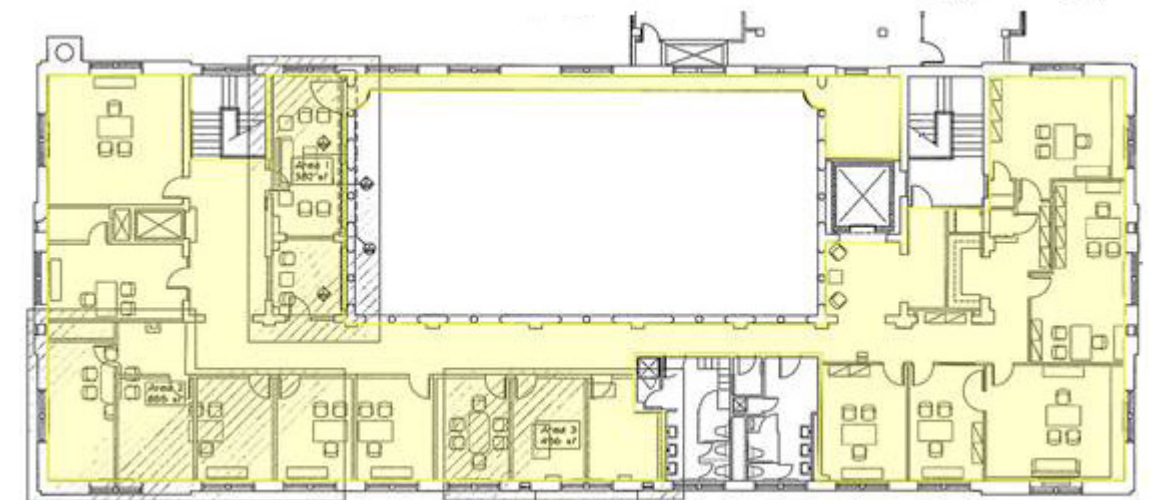
Floor plan – Lower Level



Floor plan – 1st Floor



Floor plan – 2nd Floor



Sublease highlights

- Available space: Total: 22,857 s.f.
Lower Level: Approx. 7,000 r.s.f.
1st Floor: Approx. 9,100 r.s.f.
2nd Floor: Approx. 6,400 r.s.f.
- Occupancy: 2/1/2014
- Sublease rate: \$24.00 / s.f.
- Term: Through January 31, 2028
(will consider shorter term)
- Parking: 1.30 / 1,000 SF
(covered and surface)
- Layout:
 - Open area
 - Private offices
 - Conference rooms
 - Break rooms
 - Storage

Amenities

- Central Downtown Location
- Located near Capitol
- 2 blocks from 16th Street Mall Shuttle

