



OFFICE FOR LEASE

TEMPLE ST, WATERVILLE, ME

852 SF



Overview

Located near Main Street in Waterville, this first floor office space features three rooms, reception area and a half bathroom. Previously used as a construction office.

Conveniently located nearby restaurants, retail, and professional services.

This unit can be converted for multiple uses.

Lease Information

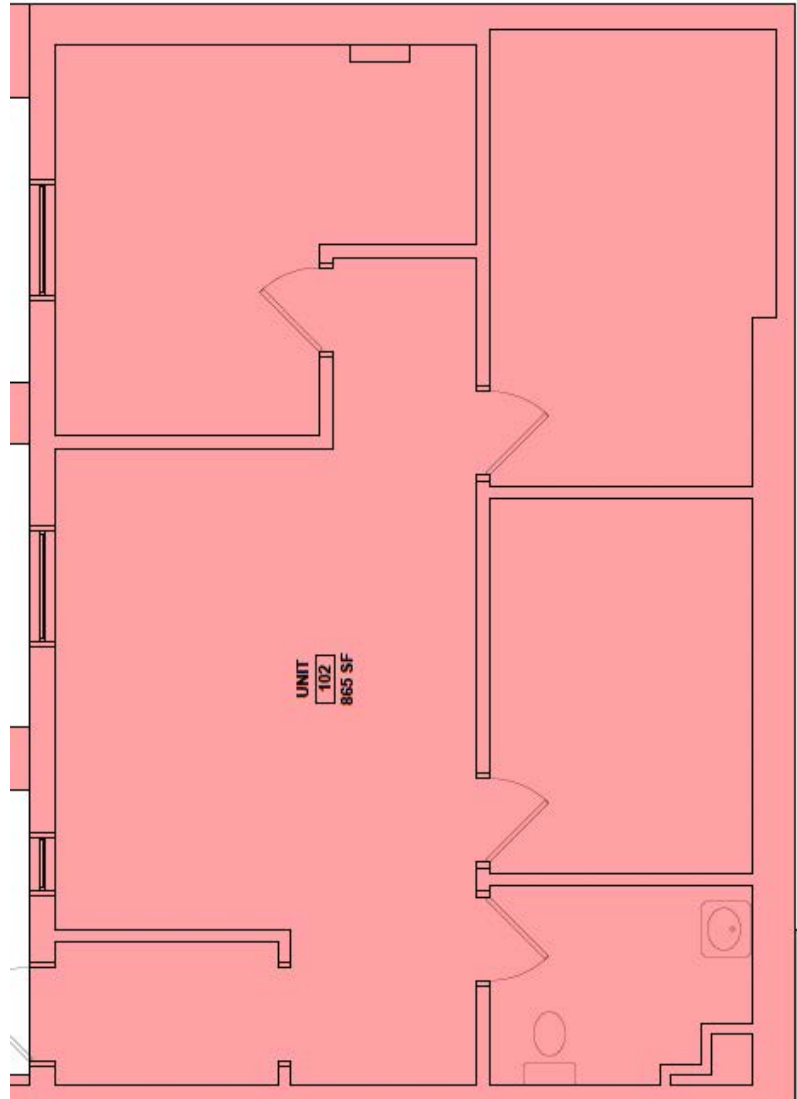
- ✓ Lease Rate: \$925 / month
- ✓ Lease Type: Modified Gross
- ✓ Space buildouts may be negotiable
- ✓ Lease Term: 2 to 5 yrs (preferred)
- ✓ Date Available: January 1, 2024

FOR MORE INFORMATION:

QR CODE

SCAN THIS IMAGE WITH YOUR MOBILE DEVICE.





CONTACT US



Don Plourde

Designated Broker/Owner

Cell: (207) 861-2462

Direct: (207) 660-4000

dplourde@cbplourde.com

Jamie Plourde

Associate Broker

Cell: (617) 312-9073

Direct: (207) 660-4034

jplourde@cbplourde.com

