

# FOR LEASE

INDUSTRIAL & OFFICE SUITES

## LA COSTA MEADOWS BUSINESS CENTER

1611-1665 S RANCHO SANTA FE RD  
SAN MARCOS, CA 92078

### Property Highlights

- » Industrial and office suites from 1,000 SF to 2,699 SF
- » Centrally located, highly desirable location near San Elijo Hills
- » Grade level loading
- » All vacant units on JX-130 LockBox

#### JOHN WITHERALL

Lic. No. 01759453  
+1 760 930 7927  
john.witherall@colliers.com

#### JOE CROTTY

Lic. No. 01369821  
+1 760 930 7906  
joe.crotty@colliers.com

#### COLLIERS INTERNATIONAL

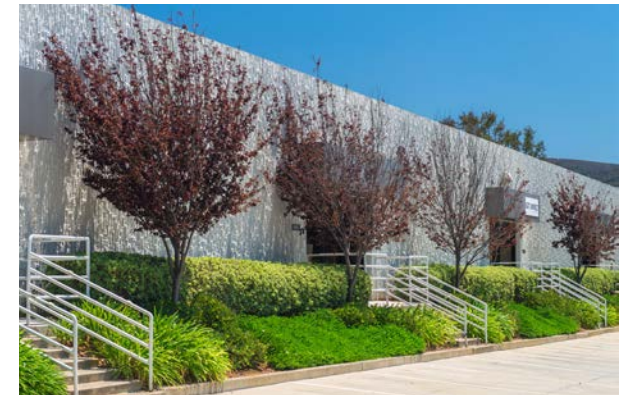
5901 Priestly Drive, Suite 100  
Carlsbad, CA 92008  
+1 760 438 8950  
www.colliers.com/sandiego



# Availability

SUITE	SQ. FT.	% OFFICE	RATE	BASE RENT	DESCRIPTION
<b>1621 S. RANCHO SANTA FE RD</b>					
F	1,928	25%	\$1.10*	\$2,120.00	Reception, two private offices, restroom and warehouse with one roll-up door.
<b>1635 S. RANCHO SANTA FE RD</b>					
105	1,000	100%	\$1.10*	\$1,100.00	Reception area, open office, restroom.
208	1,322	100%	\$1.20*	\$1,586.00	Reception area, four private offices, conference room.
<b>1665 S. RANCHO SANTA FE RD</b>					
B	2,699	25%	\$1.10*	\$2,970.00	Reception, one private office, open area, two restrooms, and warehouse. Call to show.

*\*Estimated Operating Expenses: \$0.15/SQFT  
All vacant units on vacant master key*



# Availability



★ Location of JK-130 lok box

# Floor Plans

## 1621 S. Rancho Santa Fe Rd

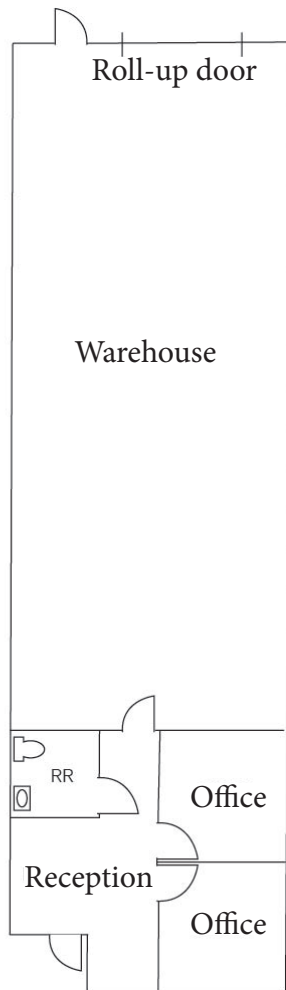
Suite F - 1,928 SF

Office: 25%

Rental Rate: \$1.10\*

Base Rent: \$2,120.00

(\*Plus \$0.15/SF/Month for  
Estimated Operating Expenses)



## 1635 S. Rancho Santa Fe Rd

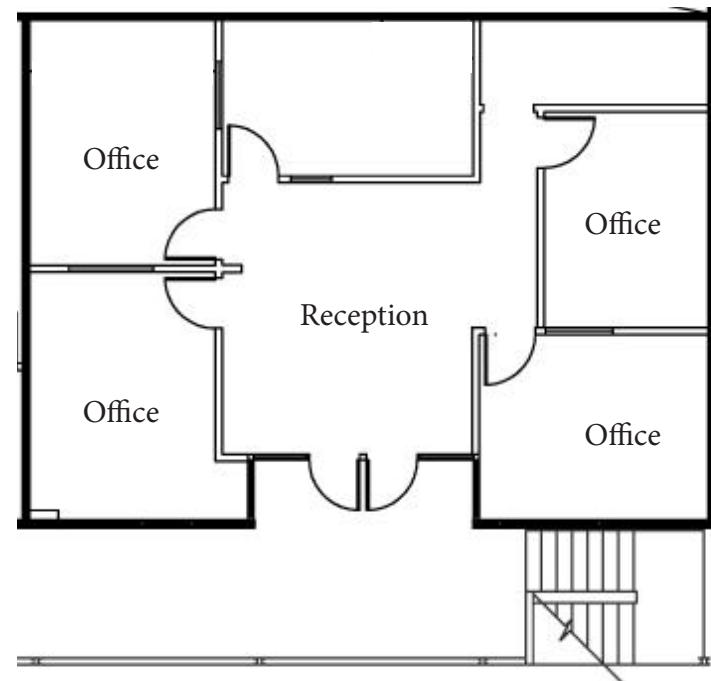
Suite 208 - 1,322 SF

Office: 100%

Rental Rate: \$1.20\*

Base Rent: \$1,586.00

(\*Plus \$0.15/SF/Month for  
Estimated Operating Expenses)



# Floor Plans

## 1635 S. Rancho Santa Fe Rd

Suite 105 - 1,000 SF

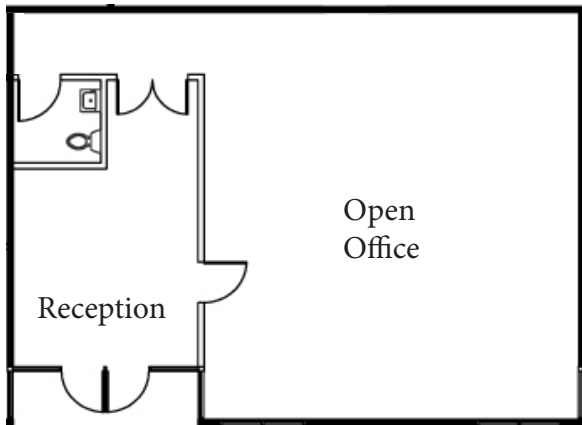
Office: 100%

Rental Rate: \$1.10\*

Base Rent: \$1,100.00

(\*Plus \$0.15/SF/Month for

Estimated Operating Expenses)



## 1665 S. Rancho Santa Fe Rd

Suite B - 2,699 SF

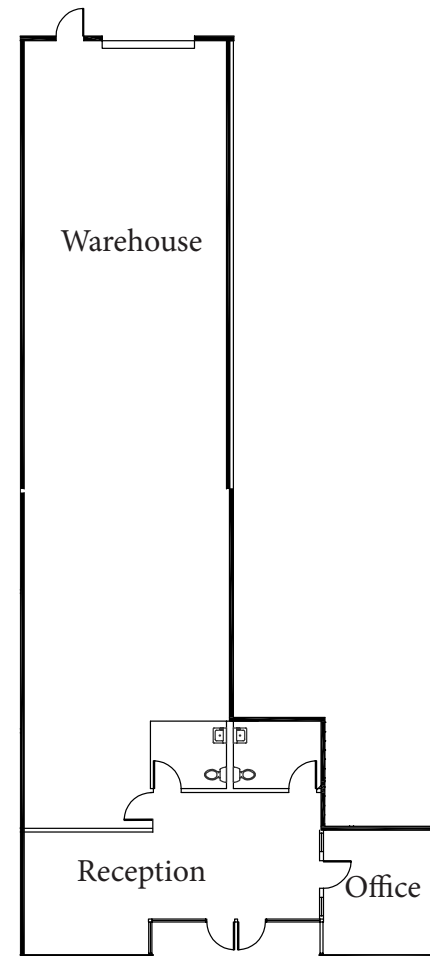
Office: 25%

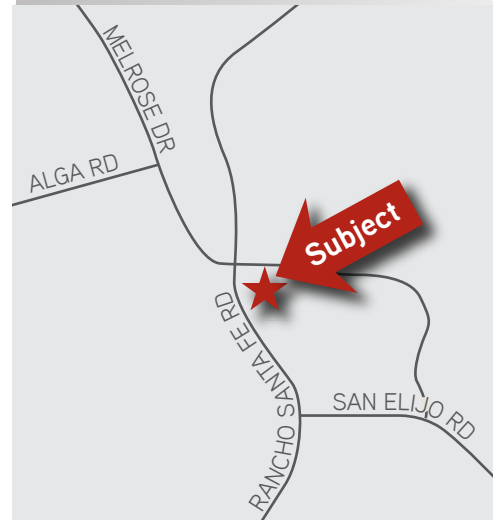
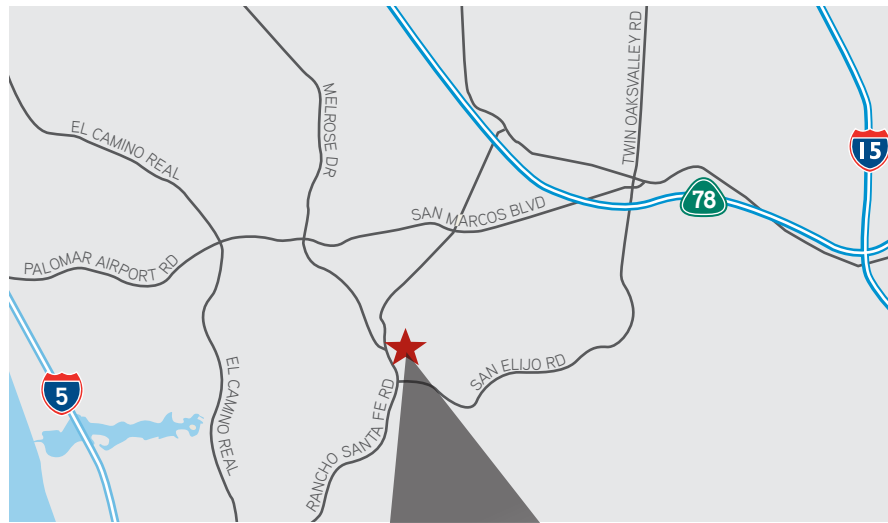
Rental Rate: \$1.10\*

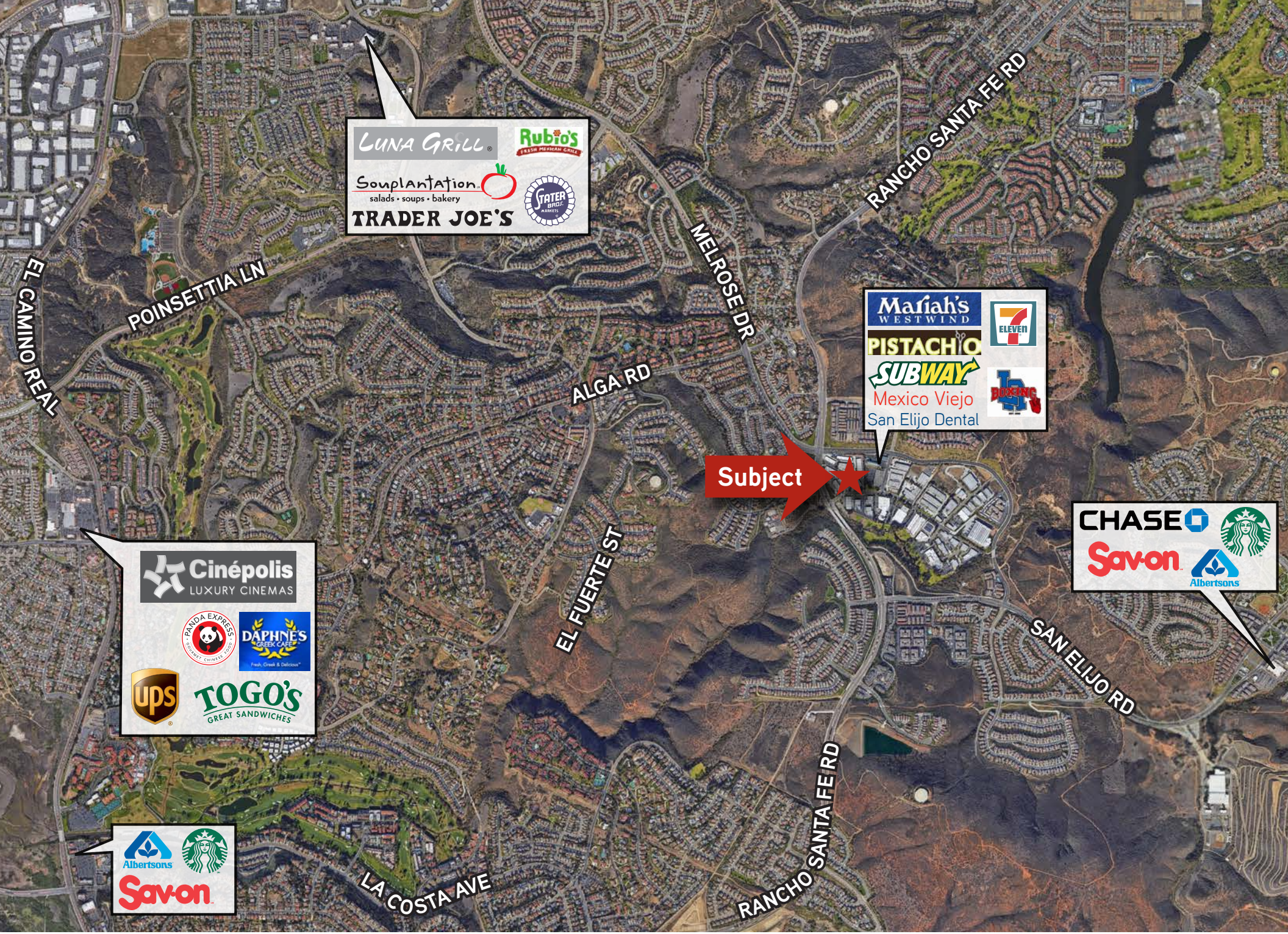
Base Rent: \$2,970.00

(\*Plus \$0.15/SF/Month for

Estimated Operating Expenses)







LUNA GRILL  
Souplantation  
salads • soups • bakery  
TRADER JOE'S  
Rubio's  
FRESH MEXICAN GRILL  
STATER  
MARKETS

Mariah's WESTWIND  
PISTACHIO  
SUBWAY  
Mexico Viejo  
San Elijo Dental  
7 ELEVEN  
DOMINGO

Cinépolis LUXURY CINEMAS  
PANDA EXPRESS  
DAPHNE'S  
ups  
TOGO'S  
GREAT SANDWICHES

CHASE  
Savon  
Starbucks  
Albertsons

Albertsons  
Savon  
Starbucks



**COLLIERS INTERNATIONAL**  
5901 Priestly Drive, Suite 100  
Carlsbad, CA 92008  
+1 760 438 8950  
[www.colliers.com/sandiego](http://www.colliers.com/sandiego)

**JOHN WITHERALL**  
Lic. No. 01759453  
+1 760 930 7927  
[john.witherall@colliers.com](mailto:john.witherall@colliers.com)

**JOE CROTTY**  
Lic. No. 01369821  
+1 760 930 7906  
[joe.crotty@colliers.com](mailto:joe.crotty@colliers.com)

This document/email has been prepared by Colliers International for advertising and general information only. Colliers International makes no guarantees, representations or warranties of any kind, expressed or implied, regarding the information including, but not limited to, warranties of content, accuracy and reliability. Any interested party should undertake their own inquiries as to the accuracy of the information. Colliers International excludes unequivocally all inferred or implied terms, conditions and warranties arising out of this document and excludes all liability for loss and damages arising there from. This publication is the copyrighted property of Colliers International and /or its licensor(s). © 2016. All rights reserved. This communication is not intended to cause or induce breach of an existing listing agreement.