



1700 BROADWAY

Partial 18th Floor – 5,124 RSF
 Entire 10th Floor – 23,697 RSF
 Entire 7th Floor – 23,697 RSF
 Possession: **Immediate**
 Sublease Term: **Through October 30, 2028**
 Institutional Sublandlord



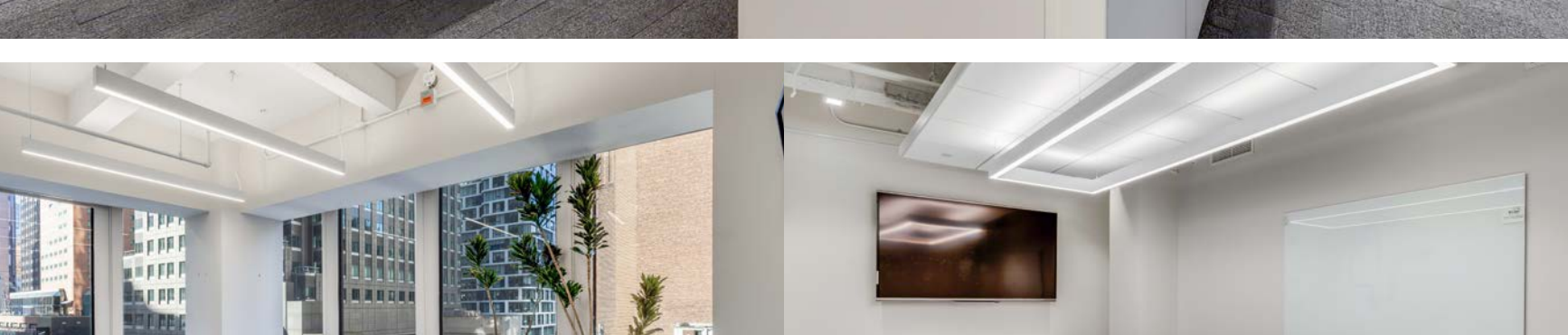
SPACE FEATURES — ENTIRE 7TH FLOOR - 23,697 RSF

- Full Floor Presence
- Fully furnished, wired, plug and play installation with a mixture of open, office and collaboration space
- Installation features:

30 Offices **1** Studio
3 Conference Rooms **1** Pantry
74 Workstations



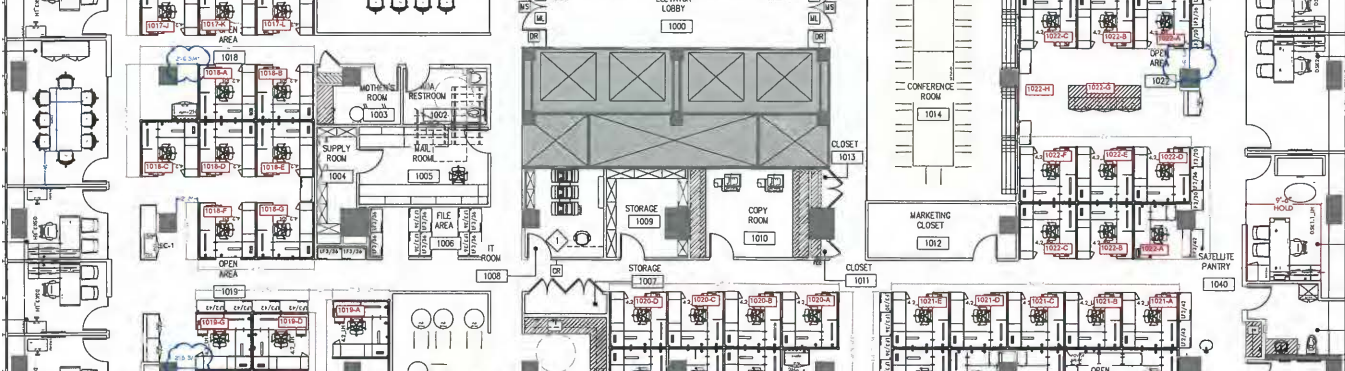
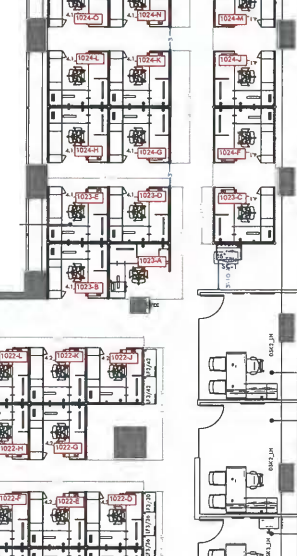
BROADWAY



SPACE FEATURES — ENTIRE 10TH FLOOR - 23,697 SF

- Full Floor Presence
- Fully furnished, wired, plug and play installation with a mixture of open, office and collaboration space
- Installation features: (awaiting space plan with layout)

18 Offices **1** Boardroom
2 Conference Rooms **1** Pantry/Lounge
71 Workstations



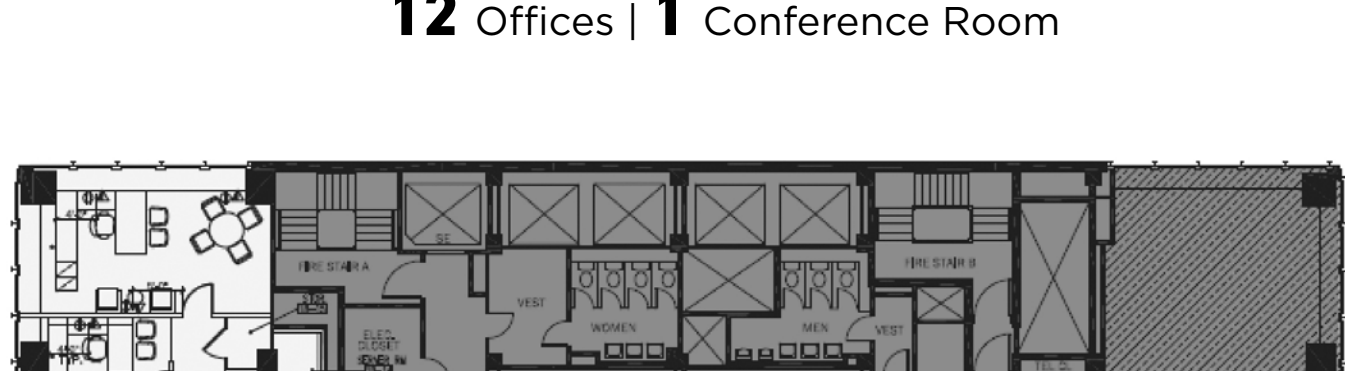
BROADWAY



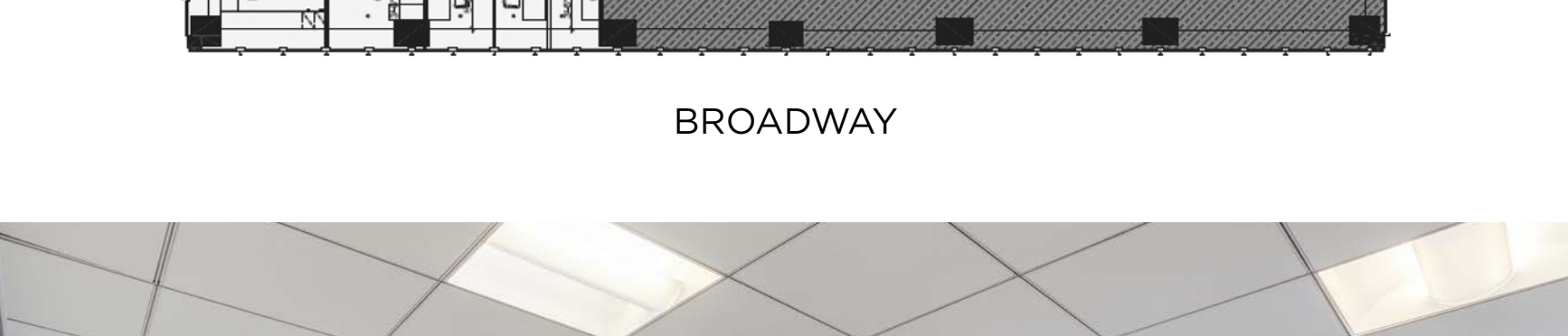
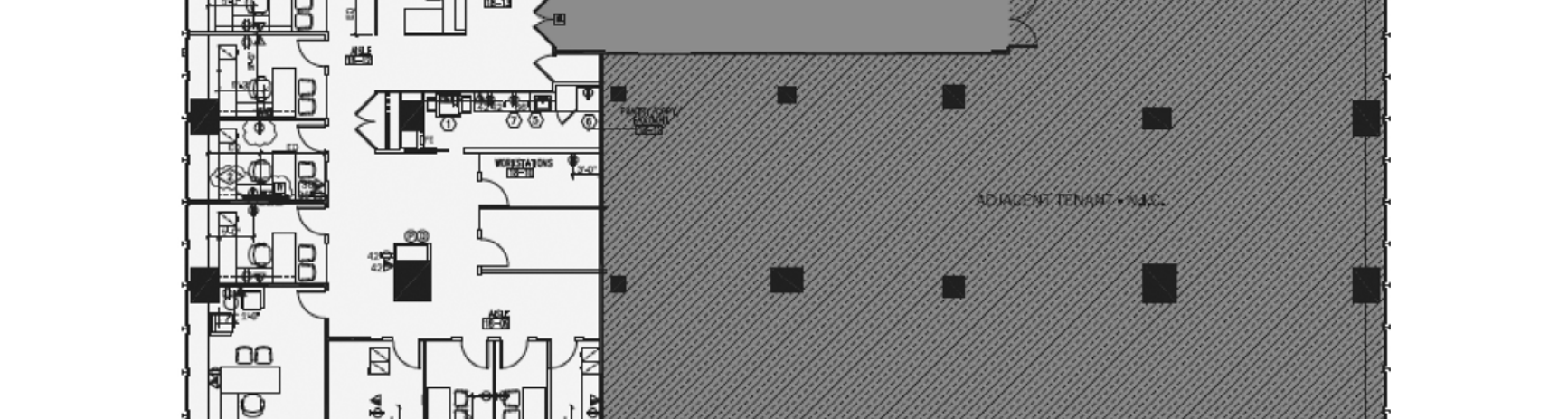
SPACE FEATURES — PARTIAL 18TH FLOOR - 5,124 SF

- Direct elevator presence
- Broadway & 54th Street exposures
- Fully furnished, wired, plug and play installations

12 Offices | **1** Conference Room



BROADWAY



BUILDING FEATURES

- New lobby
- New elevators, featuring destination dispatch
- Full service on-site parking garage
- Stunning tenant amenity center, 1700 Broadway Club, featuring:



Conference Center / Meeting Rooms



Tenant Lounge



2,000 SF Terrace



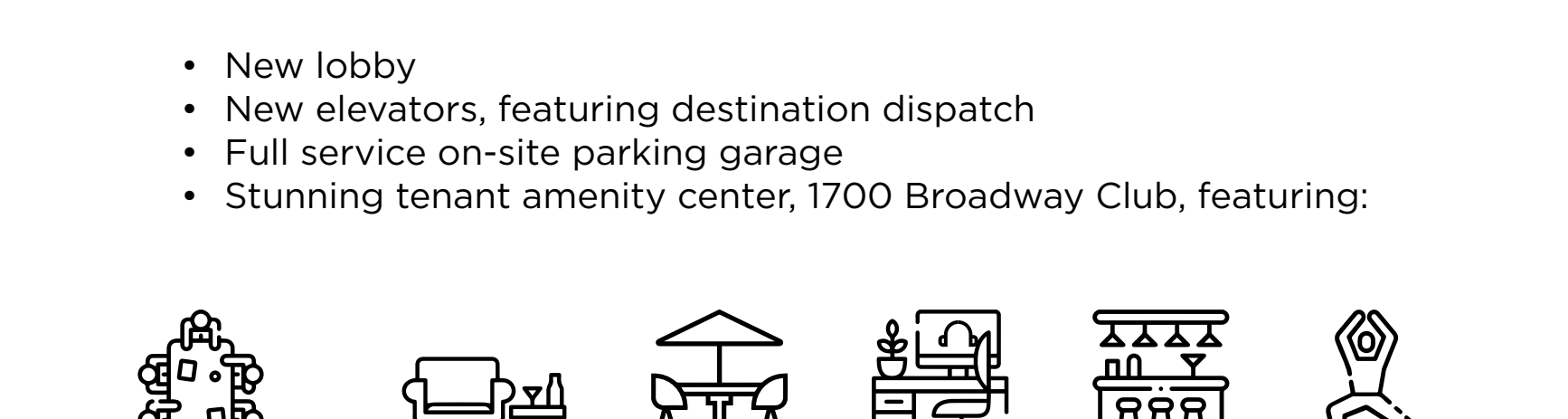
Quiet Workspaces



Bar



Fitness Studio



1700 BROADWAY CLUB



EXCLUSIVE 2,000 SF TERRACE

TRANSPORTATION & AMENITY MAP



9 Mins to Penn Station
13 Mins to Grand Central

7 Mins to Port Authority
5 Blocks to Central Park



KEY

- RESTAURANTS
- HOTELS
- CITI BIKE

Whitnee Williams / +1 212 954 0920 / whitnee.williams@cushwake.com
 Matt Livingston / +1 212 589 5194 / matt.livingston@cushwake.com
 Bryan Boisi / +1 212 318 9756 / bryan.boisi@cushwake.com
 Paul Ferraro / +1 212 318 9702 / paul.ferraro@cushwake.com



©2021 Cushman & Wakefield. All rights reserved. The information contained in this communication is strictly confidential. This information has been obtained from sources believed to be reliable but has not been verified. NO WARRANTY OR REPRESENTATION, EXPRESS OR IMPLIED, IS MADE AS TO THE CONDITION OF THE PROPERTY (OR PROPERTIES) REFERENCED HEREIN OR AS TO THE ACCURACY OR COMPLETENESS OF THE INFORMATION CONTAINED HEREIN, AND SAME IS SUBMITTED SUBJECT TO ERRORS/OMISSIONS, CHANGE OF PRICE, RENTAL OR OTHER CONDITIONS, WITHDRAWAL, WITHOUT NOTICE, AND TO ANY SPECIAL LISTING CONDITIONS IMPOSED BY THE PROPERTY OWNER(S). ANY PROJECTIONS, OPINIONS OR ESTIMATES ARE SUBJECT TO UNCERTAINTY AND DO NOT SIGNIFY CURRENT OR FUTURE PROPERTY PERFORMANCE.