

RETAIL FOR SALE OR LEASE
27,645 SF Building on 3.5 Acres

PROPERTY FEATURES

- Rare St. Matthews retail property at traffic light
- Former BMW dealership
- Only ½ mile from I-264
- Located on the most dominant retail corridor in Louisville’s east end - ¼ mile from Shelbyville Road Plaza, ½ mile from Mall St. Matthews and 1 mile from Oxmoor Center
- Traffic counts in excess of 44,000
- Excellent area demographics
- Zoned C-2

DEMOGRAPHICS	POPULATION	AVERAGE HOUSEHOLD INCOME
3 MILE RADIUS	12,466	\$87,298
5 MILE RADIUS	88,293	\$113,085
7 MILE RADIUS	237,781	\$106,527

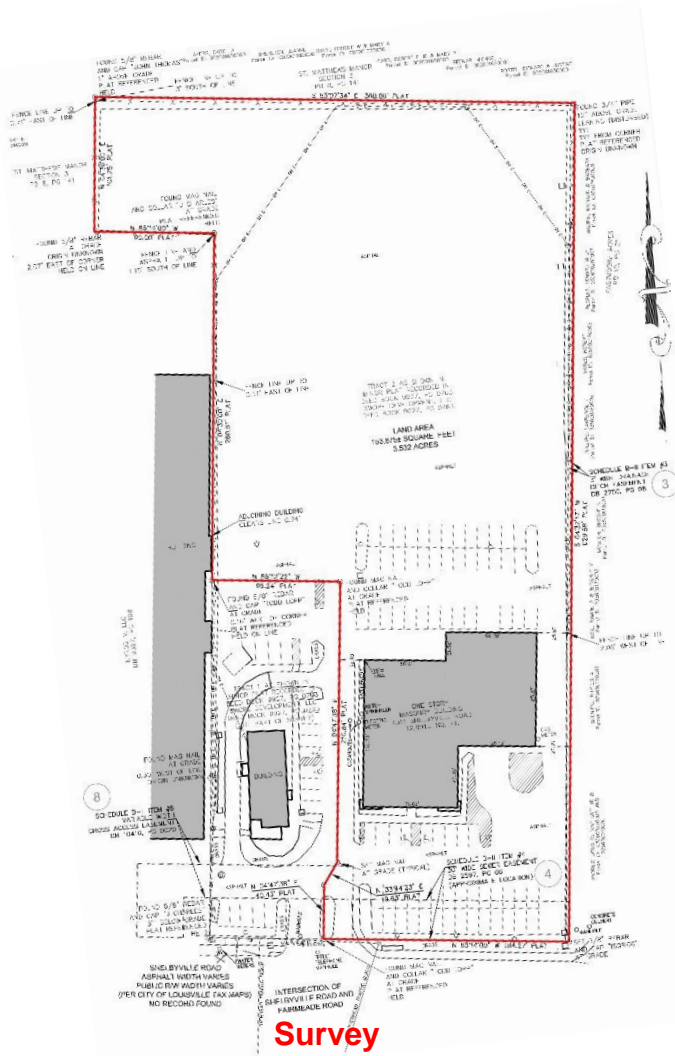


For more information, please contact:

CRAIG COLLINS
Senior Director
+1 502 589 5150 ext. 221
ccollins@commercialkentucky.com

333 E. Main Street, Suite 510
Louisville, KY 40202
phone: +1 502 589 5150
www.commercialkentucky.com

FOR SALE
4311 SHELBYVILLE ROAD
Louisville, KY 40207



Survey



Location Map

For more information, please contact:

CRAIG COLLINS
Senior Director
+1 502 589 5150 ext. 221
ccollins@commercialkentucky.com

333 E. Main Street, Suite 510
Louisville, KY 40202
phone: +1 502 589 5150
www.commercialkentucky.com