

UPPER WEST
SIDE

NEW YORK
NY

201 COLUMBUS AVENUE



SPACE DETAILS

LOCATION

Northeast corner of West 69th Street

APPROXIMATE SIZE

Ground Floor 2,000 SF

Basement 2,000 SF

Total 4,000 SF

FRONTAGE

34 FT 3 IN on Columbus Avenue

65 FT 4 IN on West 69th Street

TERM

Long term

POSSESSION

January 1, 2020

SITE STATUS

Currently Joie

NEIGHBORS

Madewell, Marine Layer, Club Monaco, Vince, Theory, REISS, Bluemercury, rag & bone, J. Jill, Equinox Fitness Club, Barry's Bootcamp, Century 21, and Bed Bath & Beyond

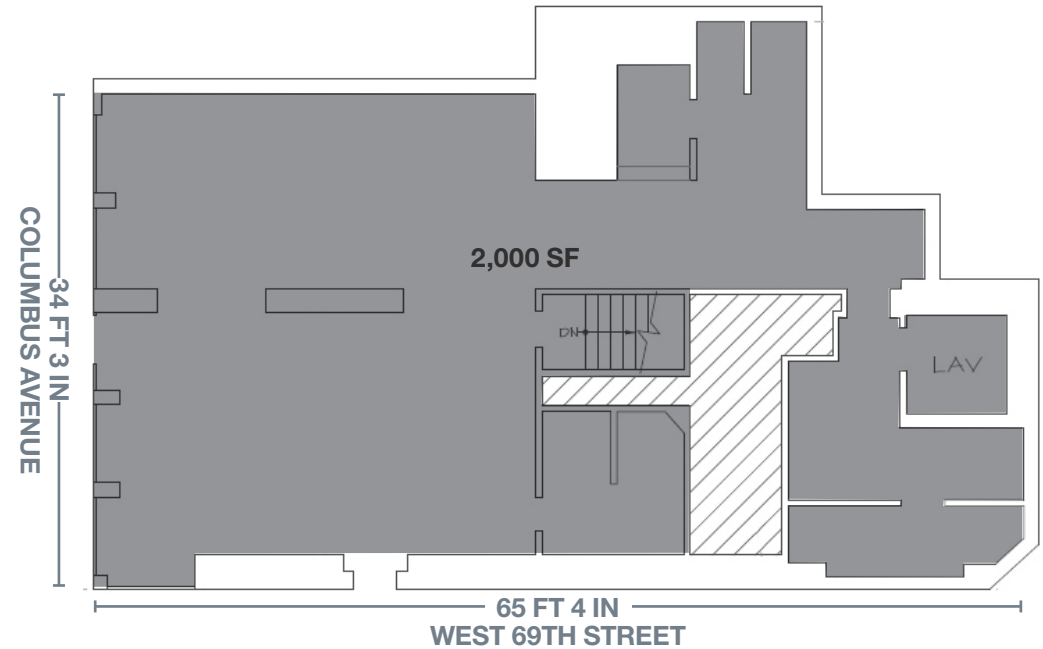
COMMENTS

Seven-day-a-week market

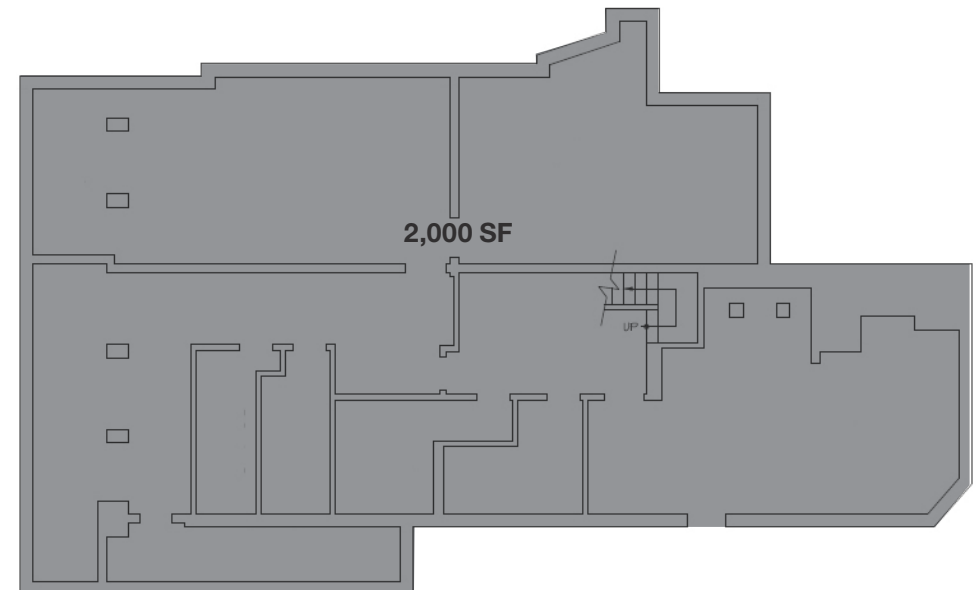
In turnkey condition

Premier corner opportunity in a dense residential neighborhood

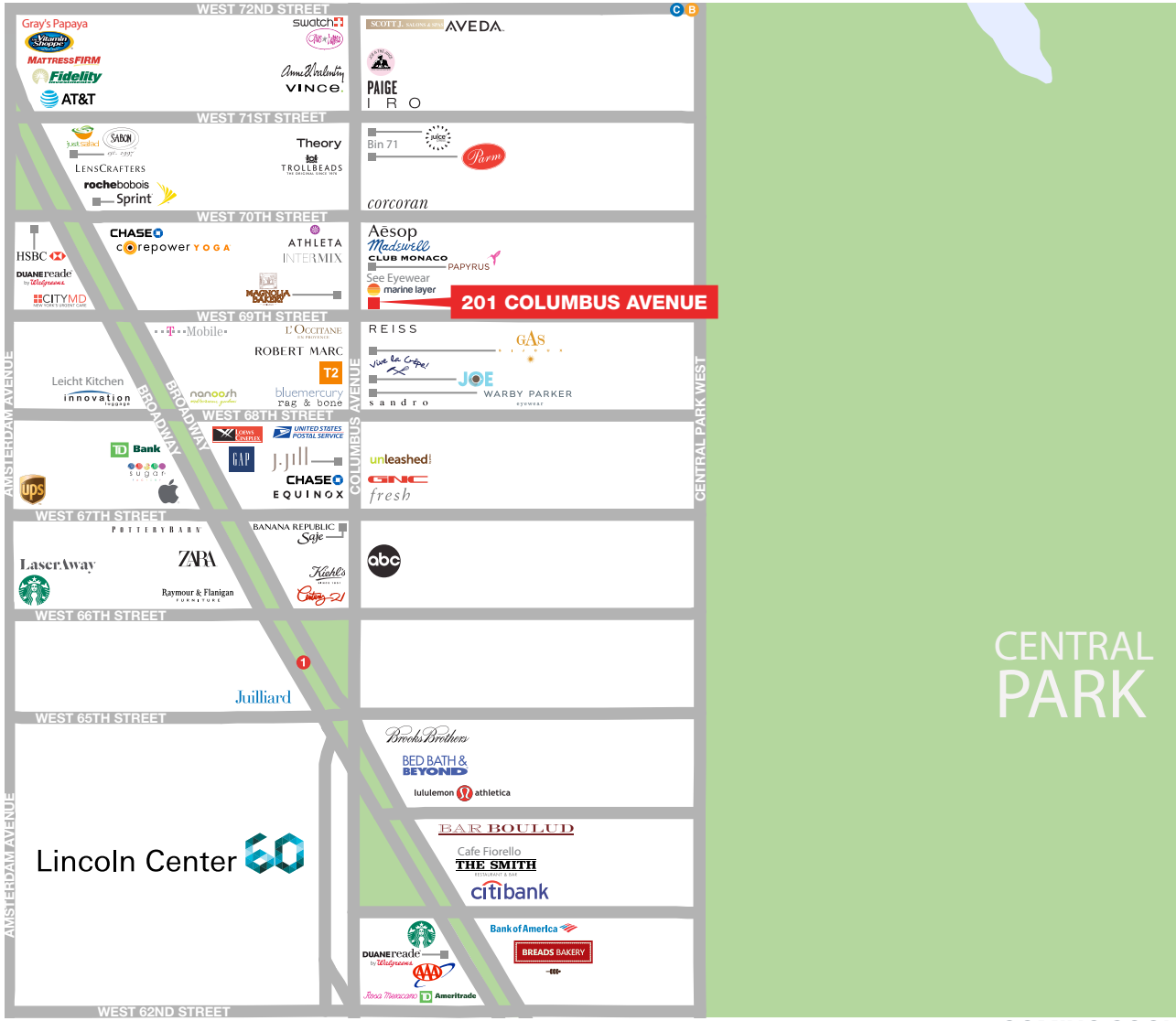
GROUND FLOOR



BASEMENT



AREA RETAIL



⊕ COMING SOON

CONTACT EXCLUSIVE AGENTS

ARIEL SCHUSTER
212.331.0132
ariel.schuster@ngkf.com

JASON WECKER
212.916.3365
jason.wecker@ngkf.com



NGKF.COM

© 2019 NEWMARK KNIGHT FRANK RETAIL. The information contained herein has been obtained from sources deemed reliable but has not been verified and no guarantee, warranty or representation, either express or implied, is made with respect to such information. Terms of sale or lease and availability are subject to change or withdrawal without notice.