

“FOR LEASE”

Polson Building, 71 Columbia, Seattle, WA

**Office Space Available
in a Transforming Neighborhood**



The Polson Building

FEATURES:

SECOND FLOOR OFFICE – Full Floor – 15,030 SF – Available October 1, 2019. \$38.00 PSF, Fully Serviced

- **High Ceilings**
- **Sandblasted Posts and Beams**
- **HVAC Climate Controlled**
- **Restrooms with Showers**



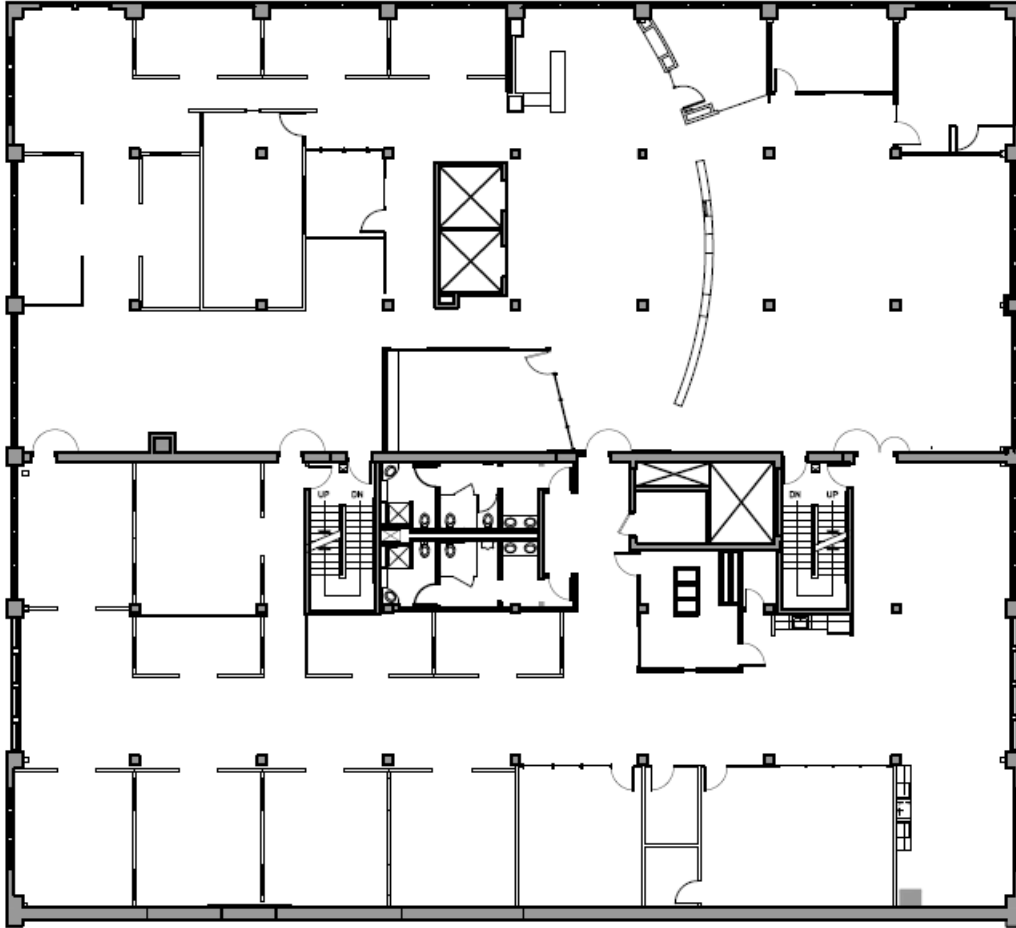
For more information, please
contact:
Stanley V. Piha
Email: stanley@stanleyre.com

2101 Fourth Avenue Suite 310
Seattle, Washington 98121
Tel (206) 441-1080 x 1
Fax (206) 443-8212

The information supplied herein is from sources we deem reliable. It is provided without any representation, warranty or guarantee, expressed or implied, as to its accuracy. Prospective Buyer or Tenant should conduct an independent investigation and verification of all matters deemed to be material, including, but not limited to, statements of income and expenses. CONSULT YOUR ATTORNEY, ACCOUNTANT OR OTHER PROFESSIONAL ADVISOR.

SECOND FLOOR PLAN

15,030 SF



The information supplied herein is from sources we deem reliable. It is provided without any representation, warranty or guarantee, expressed or implied, as to its accuracy. Prospective Buyer or Tenant should conduct an independent investigation and verification of all matters deemed to be material, including, but not limited to, statements of income and expenses. CONSULT YOUR ATTORNEY, ACCOUNTANT OR OTHER PROFESSIONAL ADVISOR.