

For Sale/Lease/Land Lease

13621 N Cleveland Ave. Fort Myers, FL 33903



OFFERING SUMMARY

Sale Price:	Available Upon Request
Lease Price:	Available Upon Request
Land Lease:	Available Upon Request
Building Size:	3,220 SF
Available SF:	3,220 SF
Lot Size:	0.93 Acres
Year Built:	2010
Zoning:	Convenience Store

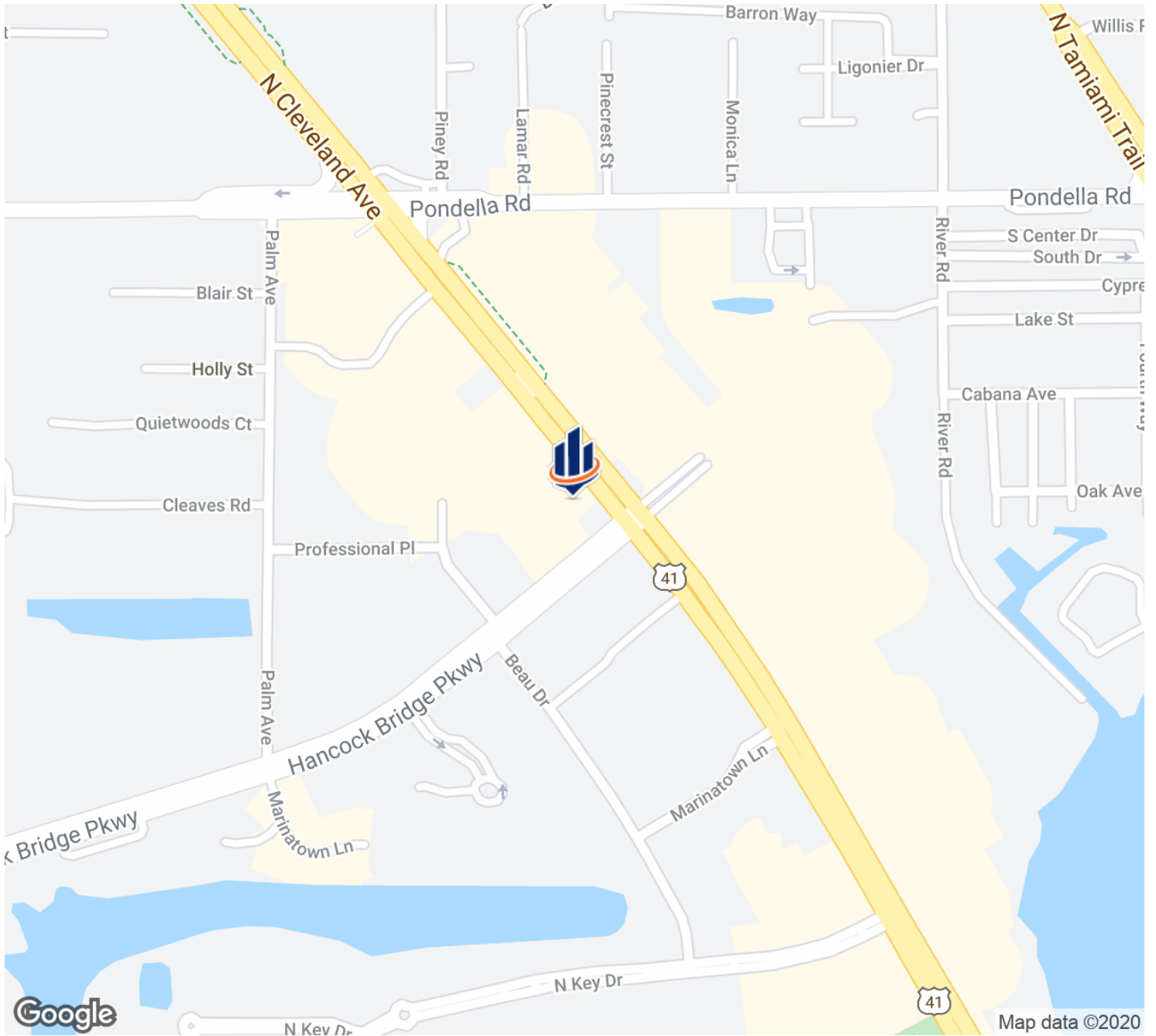
PROPERTY OVERVIEW

Freestanding gas station and convenience store. Available for lease or sale. Also, available for land lease



Tiffany Luongo
 Senior Advisor
 239.707.1700
 tiffany.l@svn.com

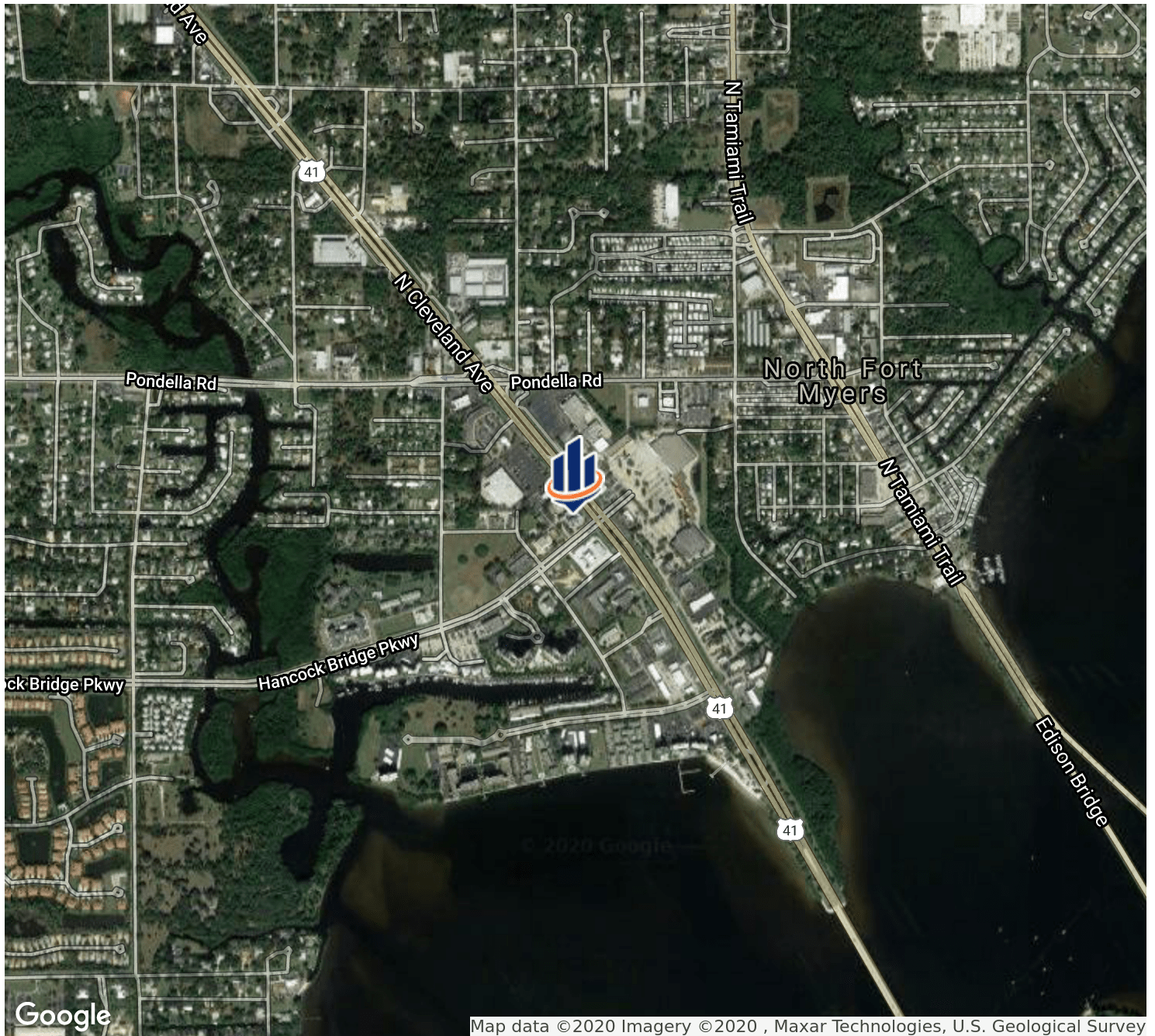




Tiffany Luongo
Senior Advisor
239.707.1700
tiffanyl@svn.com



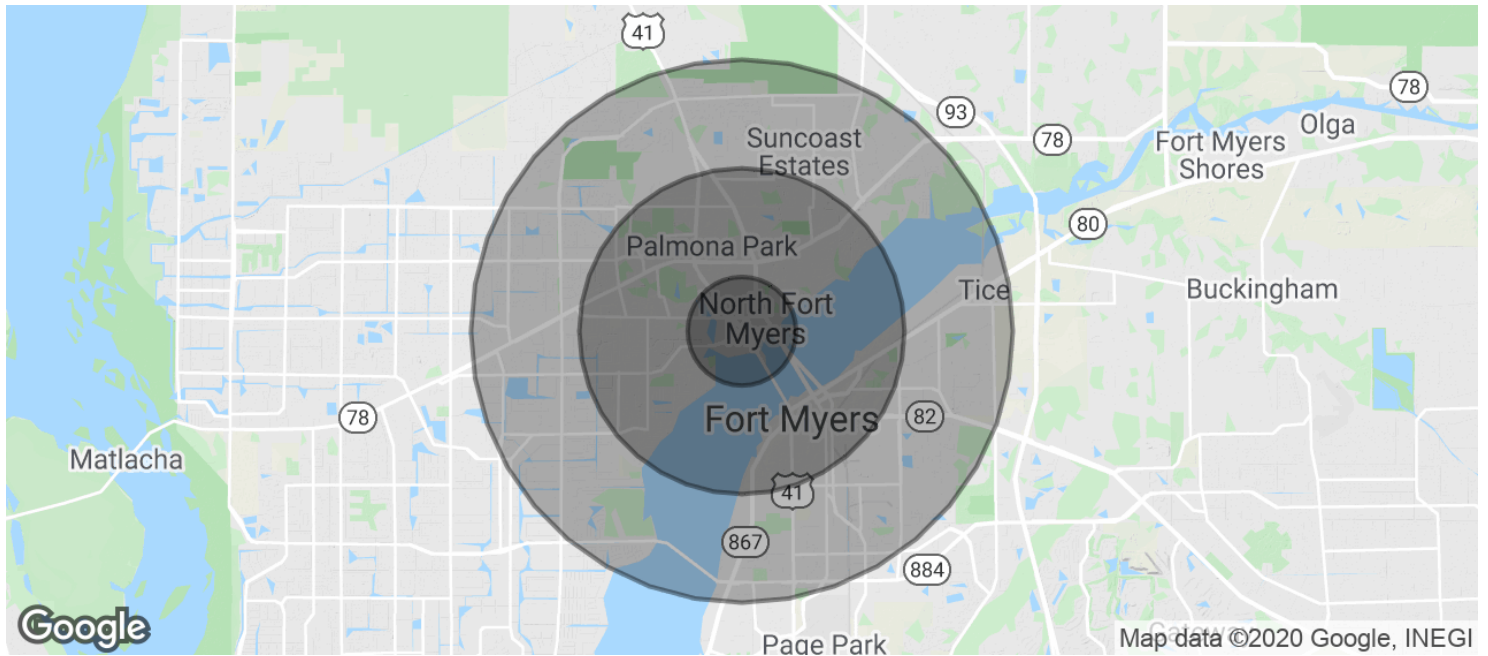
The information presented here is deemed to be accurate, but it has not been independently verified. We make no guarantee, warranty or representation. It is your responsibility to independently confirm accuracy and completeness. All SVN® offices are independently owned and operated.



Tiffany Luongo
Senior Advisor
239.707.1700
tiffanyl@svn.com



The information presented here is deemed to be accurate, but it has not been independently verified. We make no guarantee, warranty or representation. It is your responsibility to independently confirm accuracy and completeness. All SVN® offices are independently owned and operated.



POPULATION

	1 MILE	3 MILES	5 MILES
Total Population	3,460	41,147	122,584
Average age	52.9	50.3	42.9
Average age (Male)	50.9	48.1	41.8
Average age (Female)	54.8	51.7	43.8

HOUSEHOLDS & INCOME

	1 MILE	3 MILES	5 MILES
Total households	1,711	18,607	49,855
# of persons per HH	2.0	2.2	2.5
Average HH income	\$48,788	\$48,784	\$51,571
Average house value	\$169,715	\$160,300	\$179,494

* Demographic data derived from 2010 US Census

Tiffany Luongo
 Senior Advisor
 239.707.1700
 tiffanyl@svn.com



The information presented here is deemed to be accurate, but it has not been independently verified. We make no guarantee, warranty or representation. It is your responsibility to independently confirm accuracy and completeness. All SVN® offices are independently owned and operated.