

# OWNER/USER OPPORTUNITY

OFFICE FOR SALE | EDINA, MN

**6500**  
Barrie  
Road



## LEASING AGENTS

**STEVE SHEPHERD** SIOR

612.430.9973

[steve.shepherd@ngkf.com](mailto:steve.shepherd@ngkf.com)

**MATT ELDER**

612.430.9974

[matt.elder@ngkf.com](mailto:matt.elder@ngkf.com)





**6500**  
Barrie  
Road



Great Edina location



Easy access to Highway 62 and Highway 100



Close proximity to Southdale Center and Galleria



Minutes to MSP Airport

## PRICE

\$2,399,999

## BUILDING SIZE

15,304 SF

## LAND SIZE

.7 AC



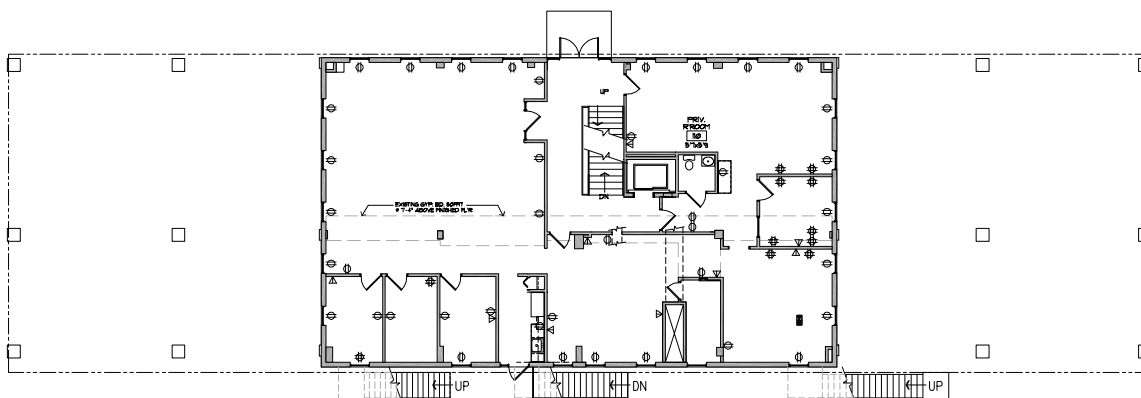
# THE CENTER OF IT ALL

6500 Barrie Road is situated just minutes from Southdale Center and The Galleria - the hot spot for dining, shopping and entertainment in Edina.

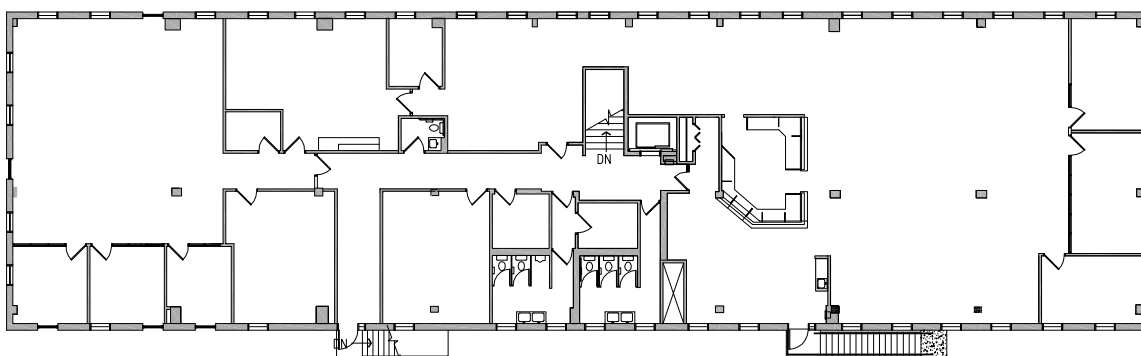


# FLOOR PLANS

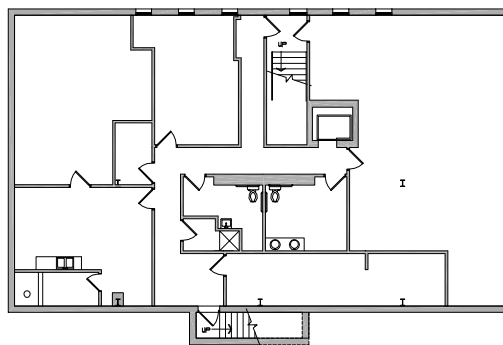
1st Floor | 3,588 SF



2nd Floor | 8,289 SF



Ground Floor | 3,427 SF



FOR INFORMATION, PLEASE CONTACT:

**STEVE SHEPHERD** SIOR  
612.430.9973  
steve.shepherd@ngkf.com

**MATT ELDER**  
612.430.9974  
matt.elder@ngkf.com



100 South 5th Street #2150, Minneapolis, MN 55402