

Taft Building

1680 N VINE STREET, LOS ANGELES

 CUSHMAN &
WAKEFIELD

 OCEAN WEST





BUILDING HIGHLIGHTS

- **The Taft Building-Hollywood's most authentic office environment**
- **Built in 1923 and completely renovated in 2019**
- **Located in the heart of the famous Hollywood Walk of Fame**
- **Onsite amenities: Starbucks, Wood & Vine, APL and walking distance to everything else Hollywood has to offer**
- **Directly adjacent to the W Hotel which provides ample onsite valet parking**
- **Connected to the Metro Red line at Hollywood and Vine- linking to Downtown and the San Fernando Valley**
- **Two blocks from 101 Freeway**

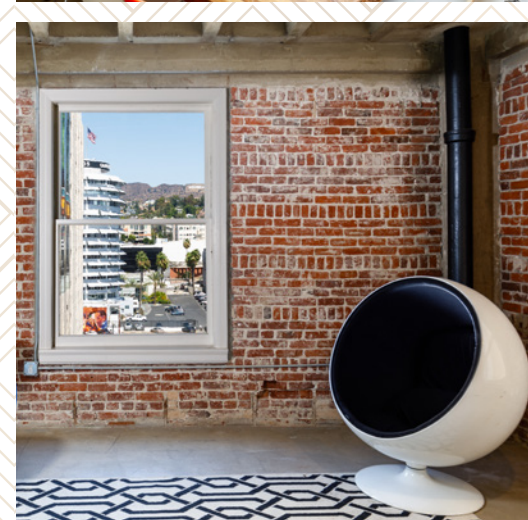


BUILDING DESCRIPTION

- 12 floors
- Building size: +/-125,888 rentable square feet
- Average floor plate: +/-10,000 rentable square feet
- Ceiling heights: 12'-14'
- Exposed brick, concrete floors and exposed concrete ceilings, operable windows throughout
- Creative space available from 1,000-10,000 square feet

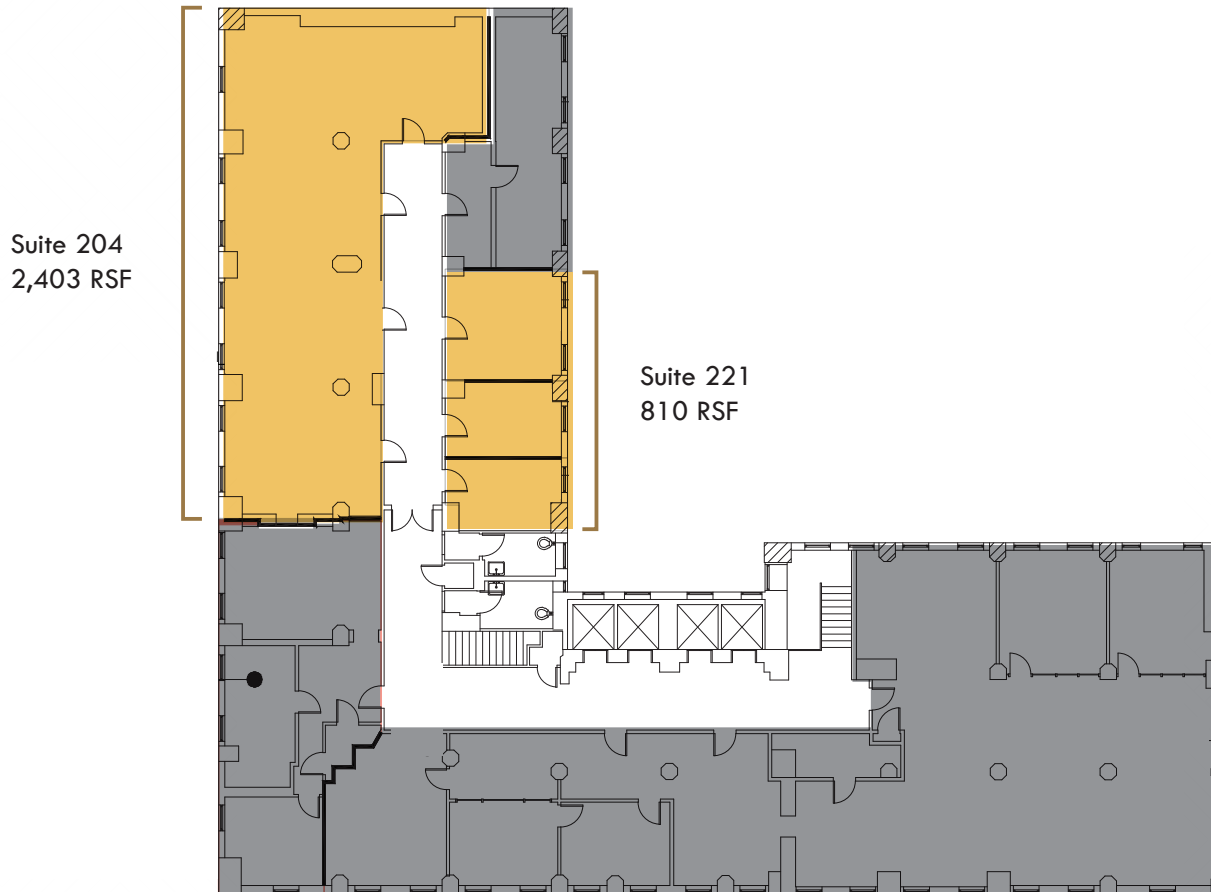
AVAILABLE SPACE

| Suite | Square footage | Asking Rent | Availability Date |
|---------|--|-------------|--------------------------|
| B001 | 5,075 RSF | Negotiable | Vacant |
| 204 | 2,403 RSF | \$5.50 FSG | Vacant |
| 221 | 810 RSF | \$5.50 FSG | Vacant |
| 312 | 5,519 RSF | \$5.50 FSG | Vacant |
| 400 | 8,369 RSF*(contiguous for full floor of 9,464 RSF) | \$5.50 FSG | Available 2/1/2021 |
| 416-418 | 1,095 RSF*(contiguous for full floor of 9,464 RSF) | \$5.50 FSG | Available 2/1/2021 |
| 500 | 3,743 RSF*(contiguous for 6,424 RSF) | \$5.50 FSG | Vacant |
| 505 | 2,681 RSF* (contiguous for 6,424 RSF) | \$5.50 FSG | Available 30 days notice |
| 518 | 1,487 RSF | \$5.50 FSG | Available 6/1/2020 |
| 700 | 3,770 RSF | \$5.50 FSG | Available 9/1/2020 |
| 708 | 2,602 RSF | \$5.50 FSG | Vacant |
| 800 | 9,920 RSF | \$5.50 FSG | Available 9/1/2020 |
| 900 | 3,324 RSF* (Contiguous for up to 6,440 RSF) | \$5.50 FSG | Vacant |
| 906 | 2,347 RSF* (Contiguous for up to 6,440 RSF) | \$5.50 FSG | Available 4/1/2021 |
| 910 | 769 RSF*(Contiguous for up to 6,440 RSF) | \$5.50 FSG | Vacant |
| 916 | 722 RSF* (Contiguous for 1,487 RSF) | \$5.50 FSG | Available 10/1/2020 |
| 918 | 765 RSF* (Contiguous for 1,487 RSF) | \$5.50 FSG | Vacant |
| 1018 | 1,492 RSF | \$5.50 FSG | Vacant |
| 1200 | 6,157 RSF | \$5.65 FSG | Available 4/1/2020 |



FLOOR PLANS

2ND FLOOR

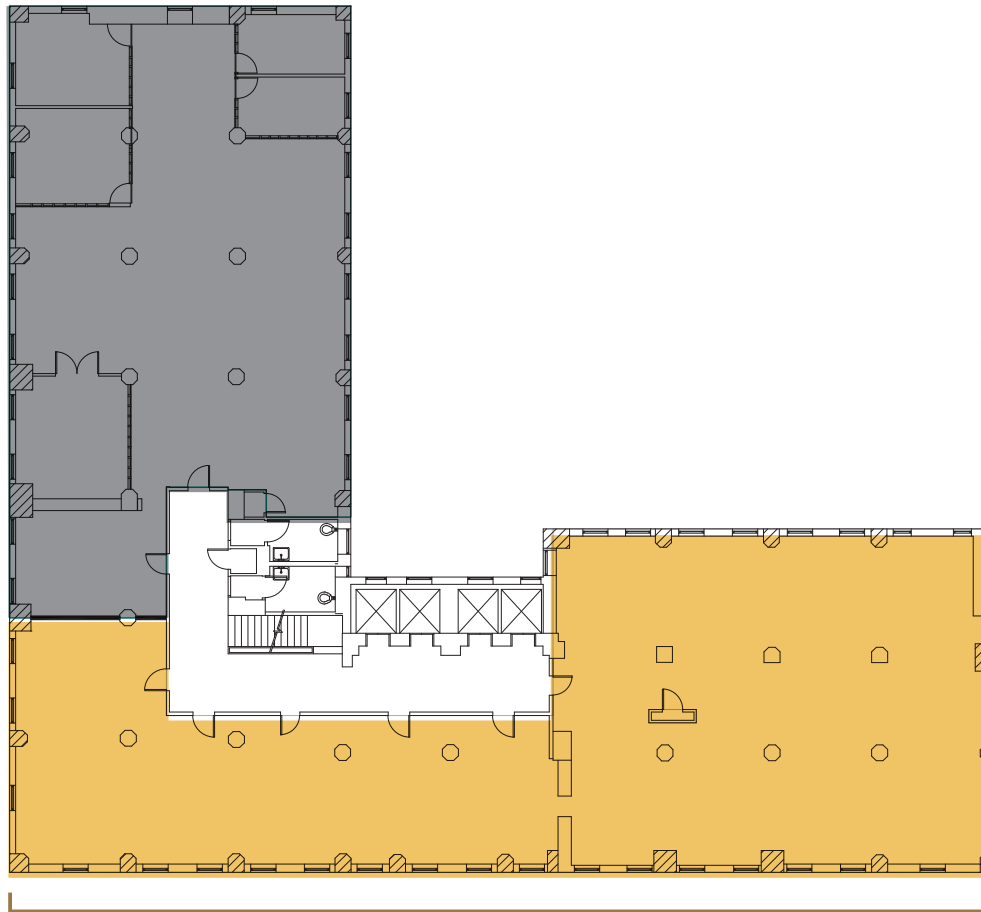


- Available
- Unavailable

TAFT BUILDING

FLOOR PLANS

3RD FLOOR



Suite 312
5,519 RSF

- Available
- Unavailable

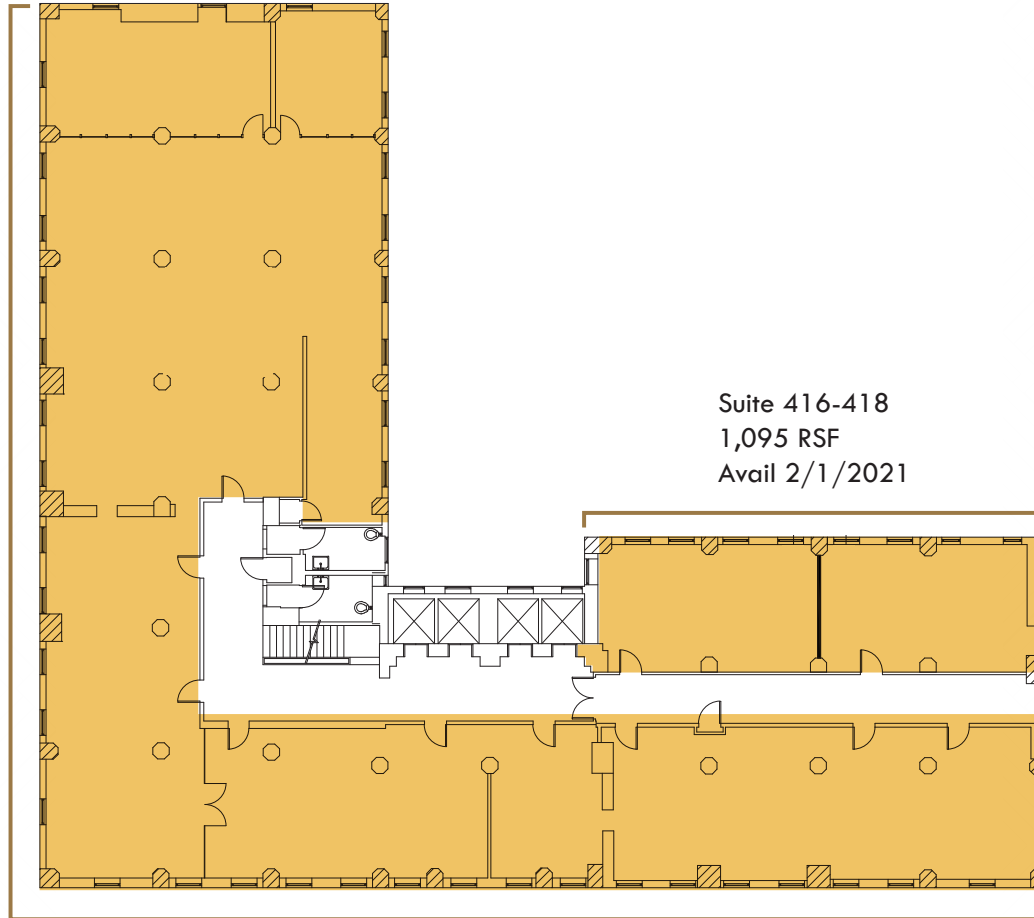
TAFT BUILDING

FLOOR PLANS

4TH FLOOR

Suite 400
8,369 RSF
Avail 2/1/2021

Suite 416-418
1,095 RSF
Avail 2/1/2021

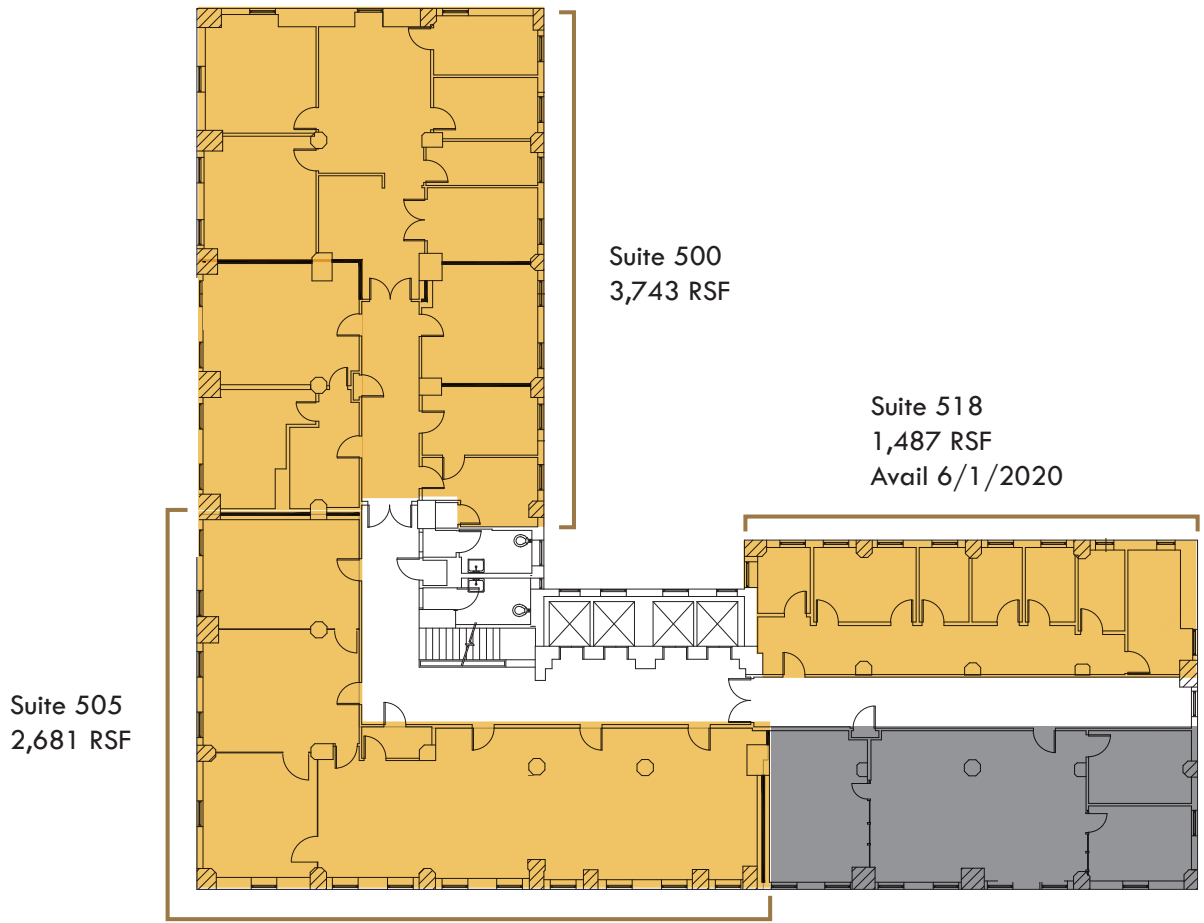


- Available
- Unavailable

TAFT BUILDING

FLOOR PLANS

5TH FLOOR

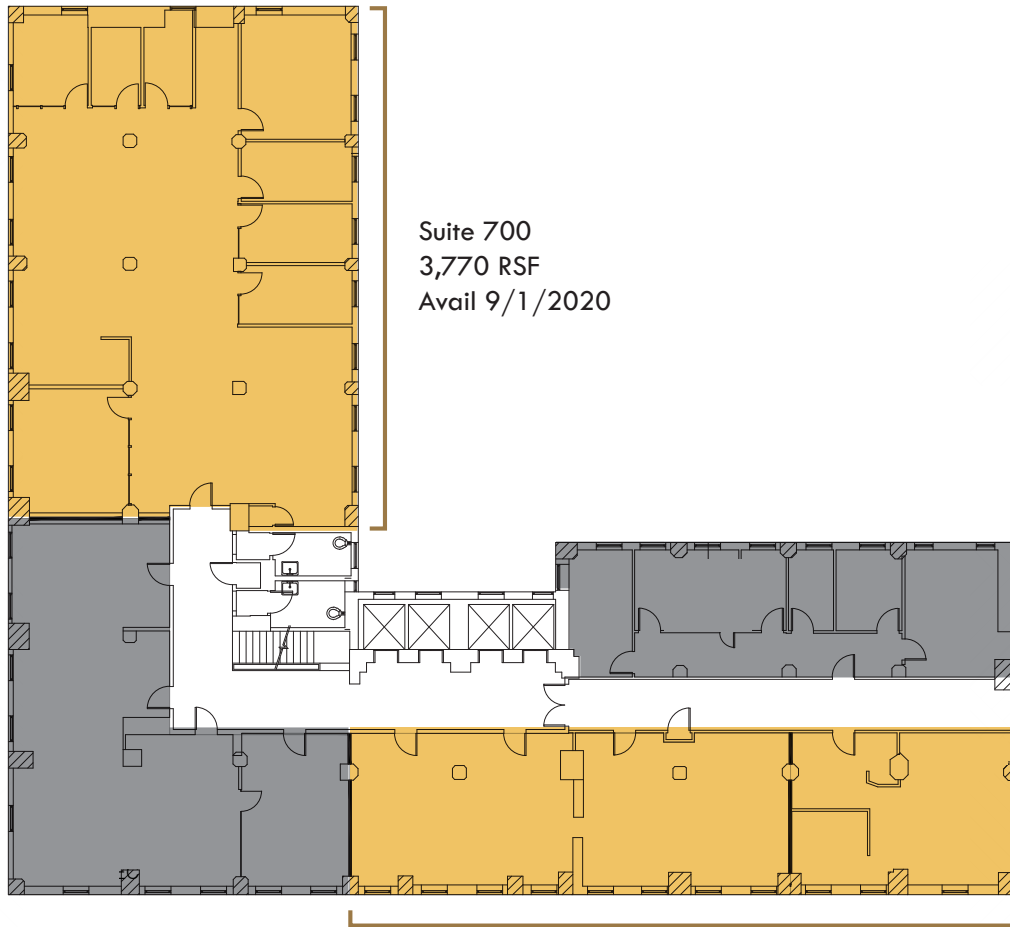


- Available
- Unavailable

TAFT BUILDING

FLOOR PLANS

7TH FLOOR



Suite 700
3,770 RSF
Avail 9/1/2020

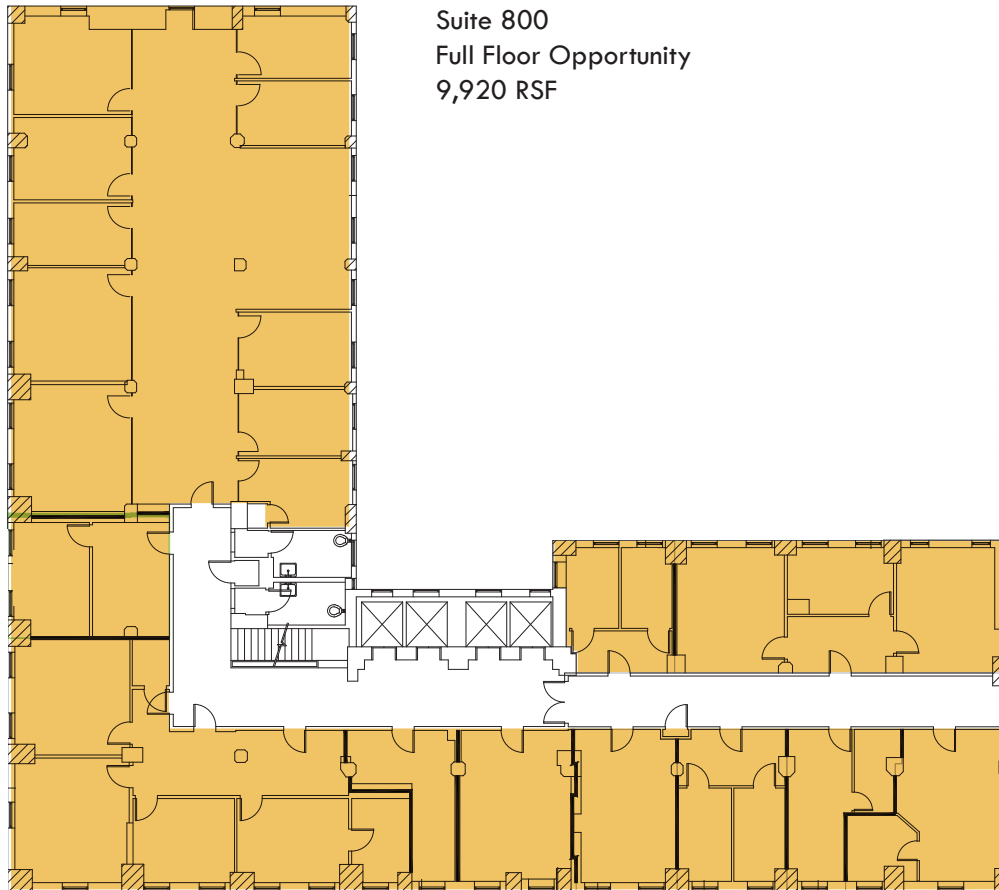
Suite 708
2,602 RSF

- Available
- Unavailable

TAFT BUILDING

FLOOR PLANS

8TH FLOOR



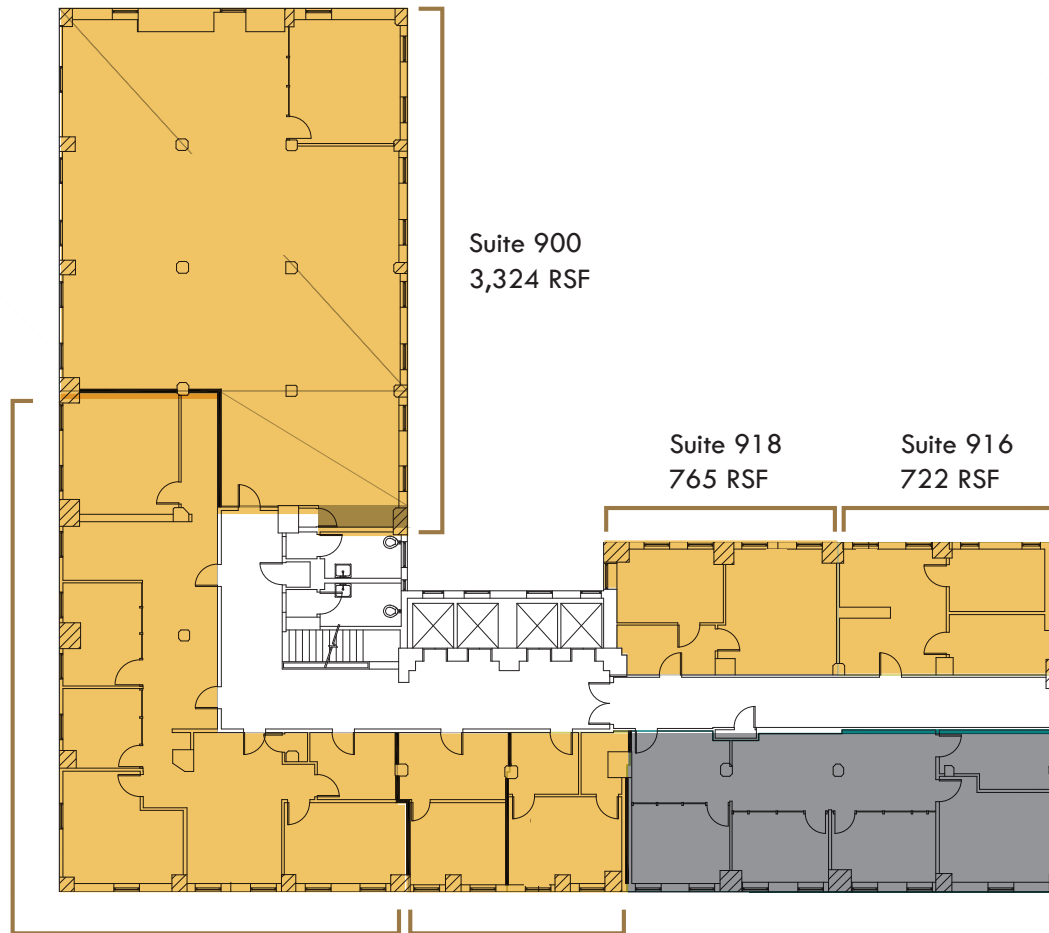
Suite 800
Full Floor Opportunity
9,920 RSF

- Available
- Unavailable

IAF I BUILDING

FLOOR PLANS

9TH FLOOR



- Available
- Unavailable

Suite 906
2,347 RSF
Avail 4/1/2021

Suite 910
769 RSF

Suite 900
3,324 RSF

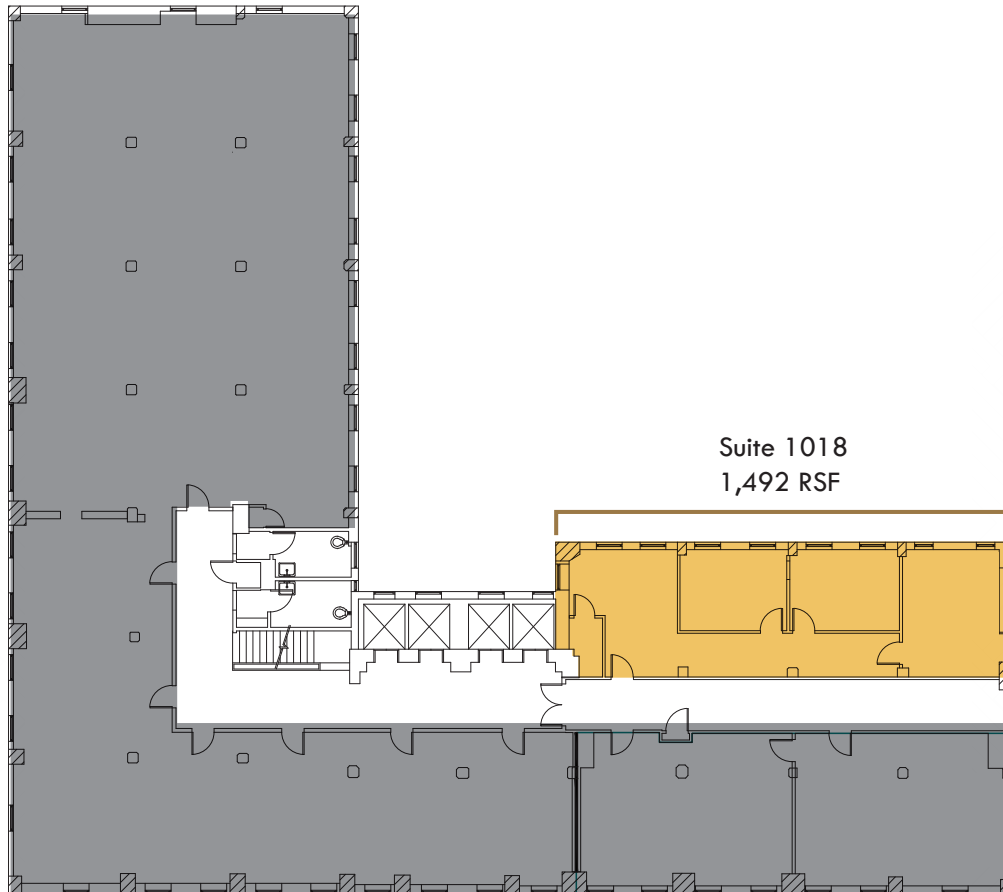
Suite 918
765 RSF

Suite 916
722 RSF

TAFT BUILDING

FLOOR PLANS

10TH FLOOR



Suite 1018
1,492 RSF

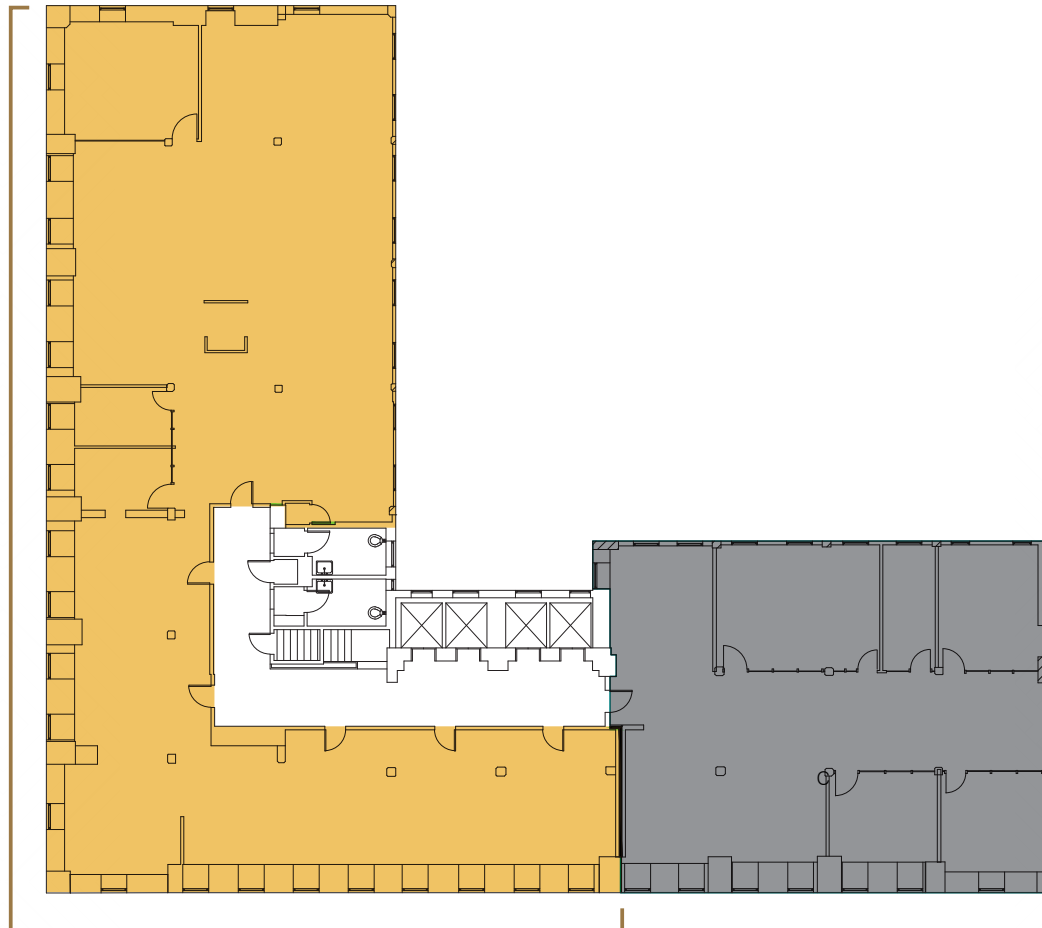
-  Available
-  Unavailable

TAFT BUILDING

FLOOR PLANS

12TH FLOOR

Suite 1200
6,157 RSF
Avail 4/1/2020



- Available
- Unavailable



APL Restaurant | Wood & Vine





Located at the iconic intersection of
Hollywood Boulevard and Vine Street

WALK SCORE® OF 95



LUXURY HOUSING

LUXURY HOTEL



AMENITIES MAP

HOLLYWOOD + HIGHLAND STATION



HOLLYWOOD BLVD

Hollywood /

HOLLYWOOD + VINE STATION

HOLLYWOOD + WESTERN STATION



SELMA AVENUE

CROSSROADS OF THE WORLD

CAHUENGA BLVD

VINE ST

TRADER JOE'S

VIACOM

EQUINOX

COLUMBIA SQUARE

SUNSET BLVD

NETFLIX

DREAM HOTEL

ESSEX & HOLLYWOOD

PALLADIUM

TENDER GREENS

NETFLIX ON VINE

KATSUYA

FOUNTAIN AVENUE

HOLLYWOOD

N GOWER ST

SANTA MONICA BLVD

AVA HOLLYWOOD



AMENITIES

1 SUNSET MEDIA CENTER

- Coffee Bean & Tea Leaf
- The Waffle
- The Well
- Comerica Bank
- OneMain Financial

2 COLUMBIA SQUARE

- Sweetgreen
- Sugarfish
- Rubies + Diamonds
- Paley
- Sorra
- NeueHouse

CAFÉ/RESTAURANTS

- 3 Bibibop
- 4 Blue Palms Brewhouse
- 5 Bowery
- 6 Caffé Etc.
- 7 Chipotle
- 8 Blue C Sushi
- 9 33 Taps
- 10 Fabiolus Café
- 11 Farmer's Kitchen
- 12 St. Felix
- 13 Stella Barra
- 14 Veggie Grill
- 15 Groundwork Coffee
- 16 Hemingway's
- 17 Jersey Mike's Subs

18 Juicy Burger

- 19 Kabuki
- 20 Katsuya
- 21 Kitchen 24
- 22 Farida
- 23 Wood & Vine
- 24 Roscoe's House of Chicken 'N Waffles
- 25 Starbucks
- 26 Stout Burgers
- 27 Tender Greens
- 28 The Hungry Cat
- 29 The Melt
- 30 The Running Goose
- 31 800 Degrees

35 EASTOWN

- Pressed Juicery
- Shake Shack
- Sushi of Gari
- Greenleaf
- Dunkin' Donuts
- SoulCycle
- Barry's Bootcamp
- CVS

HOTELS

- 36 W Hollywood
 - Delphine
 - Hollywood Burger
 - Bliss Hollywood Spa
 - Blo Bar

37 Mama Shelter

- 38 Dream Hotel
- 39 Kimpton Hotel
- 40 Loews Hollywood
- 41 Hospital Club
 - Cleo Restaurant
- 44 SPACE 15 TWENTY
 - Umami Burger
 - Urban Outfitters
 - Free People
 - Hairroin Salon
 - Pharmacy Boardshop
- 45 Hollywood

GROCERY/SUNDRY

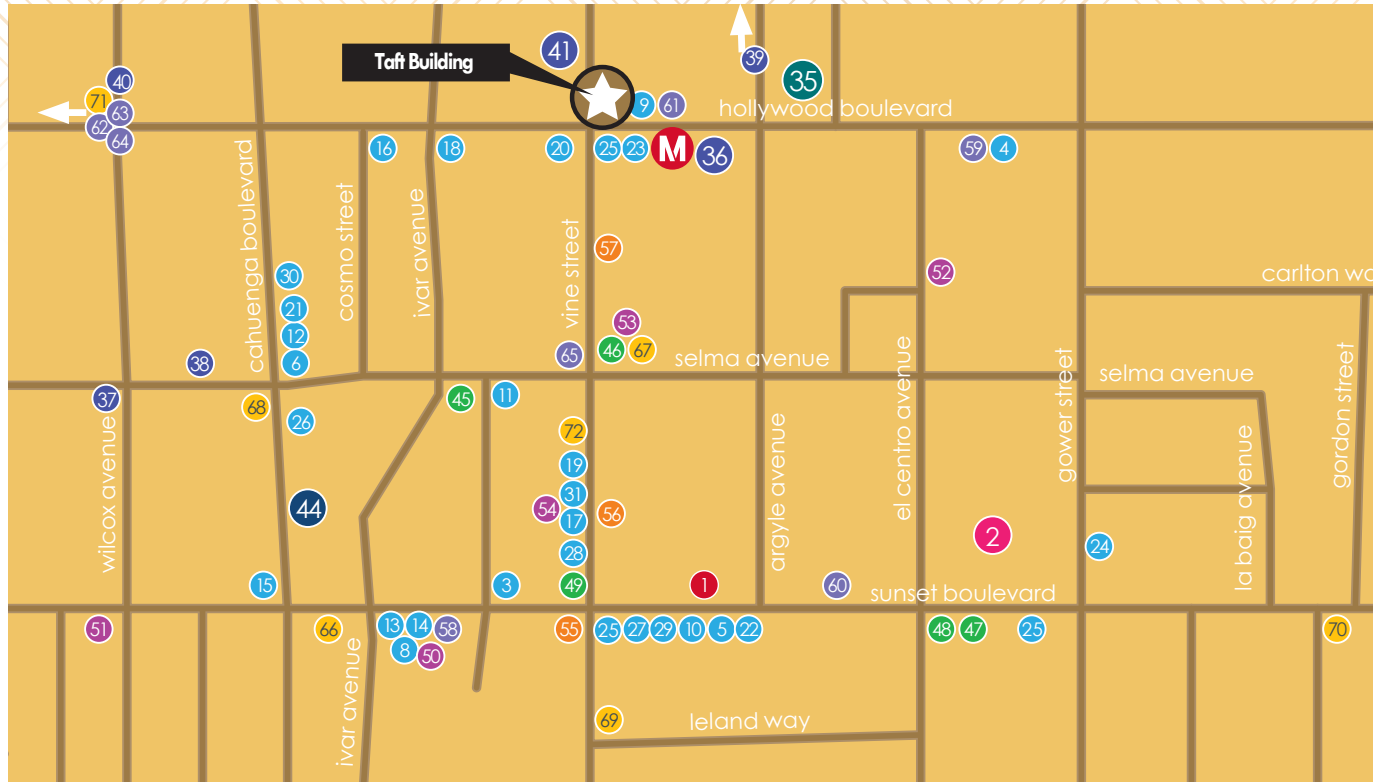
Farmers Market

- (Sundays)
- 46 Trader Joe's
- 47 GNC
- 48 Rite Aid
- 49 Walgreens
- ATHLETIC FACILITIES**
- 50 24 Hour Fitness
- 51 Bar Method
- 52 LA Fitness
- 53 Equinox
- 54 Yogaworks
- BANKS**
- 55 Bank of America
- 56 Chase Bank
- 57 Wells Fargo Bank

THEATERS

- 58 Arclight Theatre/ Cinerama Dome
- 59 Fonda Theatre/ Music Box
- 60 Hollywood Palladium
- 61 Pantages Theatre
- 62 Dolby Theatre
- 63 Egyptian Theatre
- 64 TCL Chinese Theatre
- 65 Montalban Theatre
- OTHER**
- 66 Amoeba Records
- 67 Bubbles Cleaners

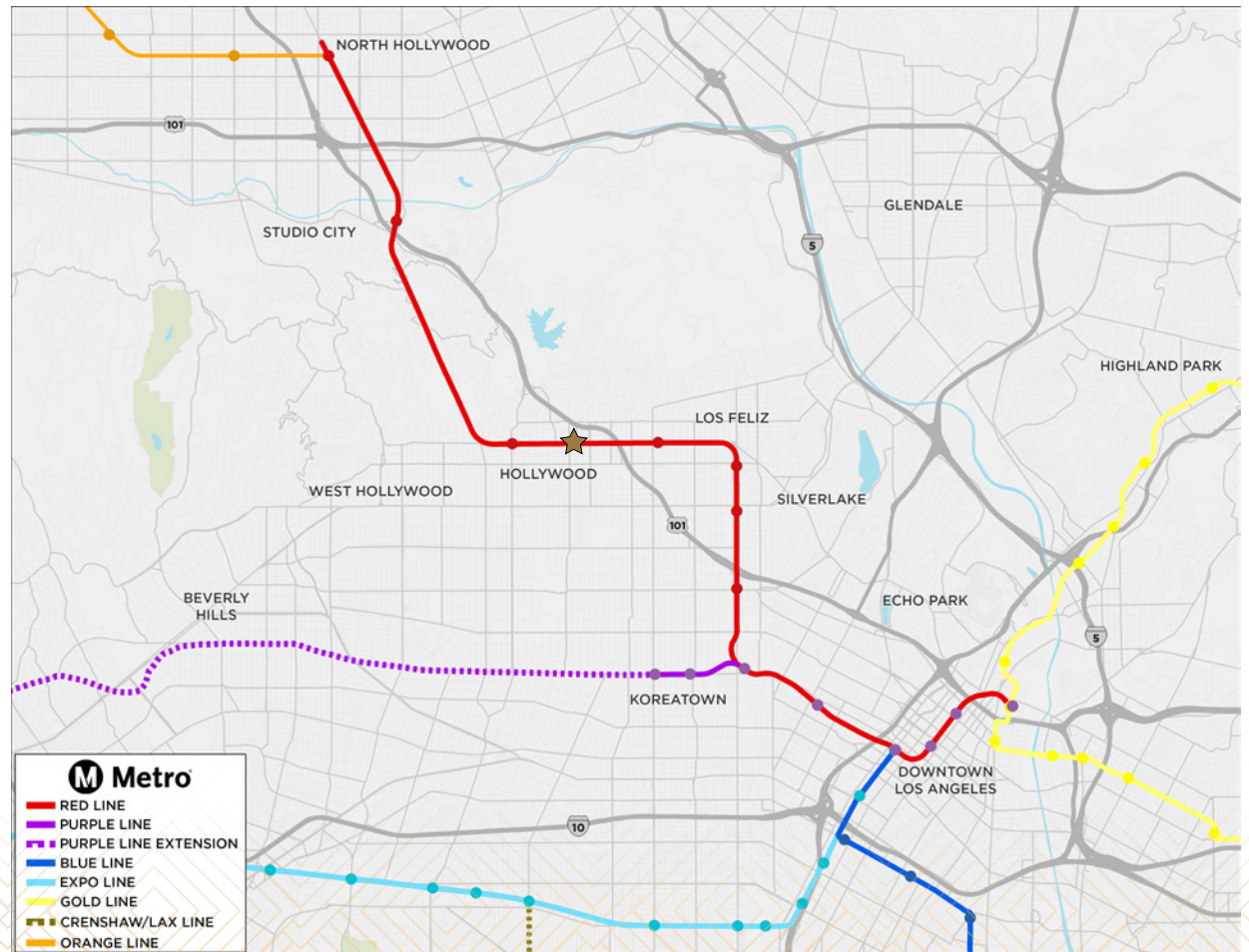
- 68 Floyd's Barber Shop
- 69 K&L Wine Merchants
- 70 Emerson College
- 71 Hollywood & Highland Center
- 72 Bed Bath & Beyond



TRANSPORTATION

Hollywood and Vine: A Regional Transportation Hub

The Taft Building is situated within one mile of two main Red Line metro stations. This building sits immediately adjacent to the Hollywood and Vine station and less than one mile away from the Highland station. The Red Line, a 17-mile heavy rail subway enjoyed by approximately one million riders each year, connects office tenants, residents, visitors, etc. and has a terminus at Union Station in downtown Los Angeles. The Metro Rail from Hollywood takes approximately 15 minutes to commute to the Union Station, LA Live, and the Staples Center.



TAFT BUILDING

1680 N VINE STREET, LOS ANGELES

[View Site Specific COVID-19 Prevention Plan](#)

©2020 Cushman & Wakefield. All rights reserved. The information contained in this communication is strictly confidential. This information has been obtained from sources believed to be reliable but has not been verified. NO WARRANTY OR REPRESENTATION, EXPRESS OR IMPLIED, IS MADE AS TO THE CONDITION OF THE PROPERTY (OR PROPERTIES) REFERENCED HEREIN OR AS TO THE ACCURACY OR COMPLETENESS OF THE INFORMATION CONTAINED HEREIN, AND SAME IS SUBMITTED SUBJECT TO ERRORS, OMISSIONS, CHANGE OF PRICE, RENTAL OR OTHER CONDITIONS, WITHDRAWAL WITHOUT NOTICE, AND TO ANY SPECIAL LISTING CONDITIONS IMPOSED BY THE PROPERTY OWNER(S). ANY PROJECTIONS, OPINIONS OR ESTIMATES ARE SUBJECT TO UNCERTAINTY AND DO NOT SIGNIFY CURRENT OR FUTURE PROPERTY PERFORMANCE.



FOR MORE INFORMATION,
PLEASE CONTACT:

JOSH BERNSTEIN

CA Lic 01828093

+1 310 228 1425

josh.bernstein@cushwake.com

SCOTT MENKUS

CA Lic 01476553

+1 310 595 2211

scott.menkus@cushwake.com

PETE COLLINS

CA Lic 01813645

+1 310 595 2227

peter.collins@cushwake.com

