

LAKE SIDE

O F F I C E P L A Z A

1291-1295 OAKMEAD PARKWAY, SUNNYVALE

NEW SUITES AVAILABLE!

±5,376 SF FREESTANDING OFFICE BUILDING FOR LEASE

ERIK HALLGRIMSON | +1 408 615 3435 | erik.hallgrimson@cushwake.com | LIC #01274540

MARYANNA MCSWAIN | +1 408 615 3446 | maryanna.mcswain@cushwake.com | LIC #00696583

CLARK STEELE | +1 408 436 3653 | clark.steele@cushwake.com | LIC #01995379





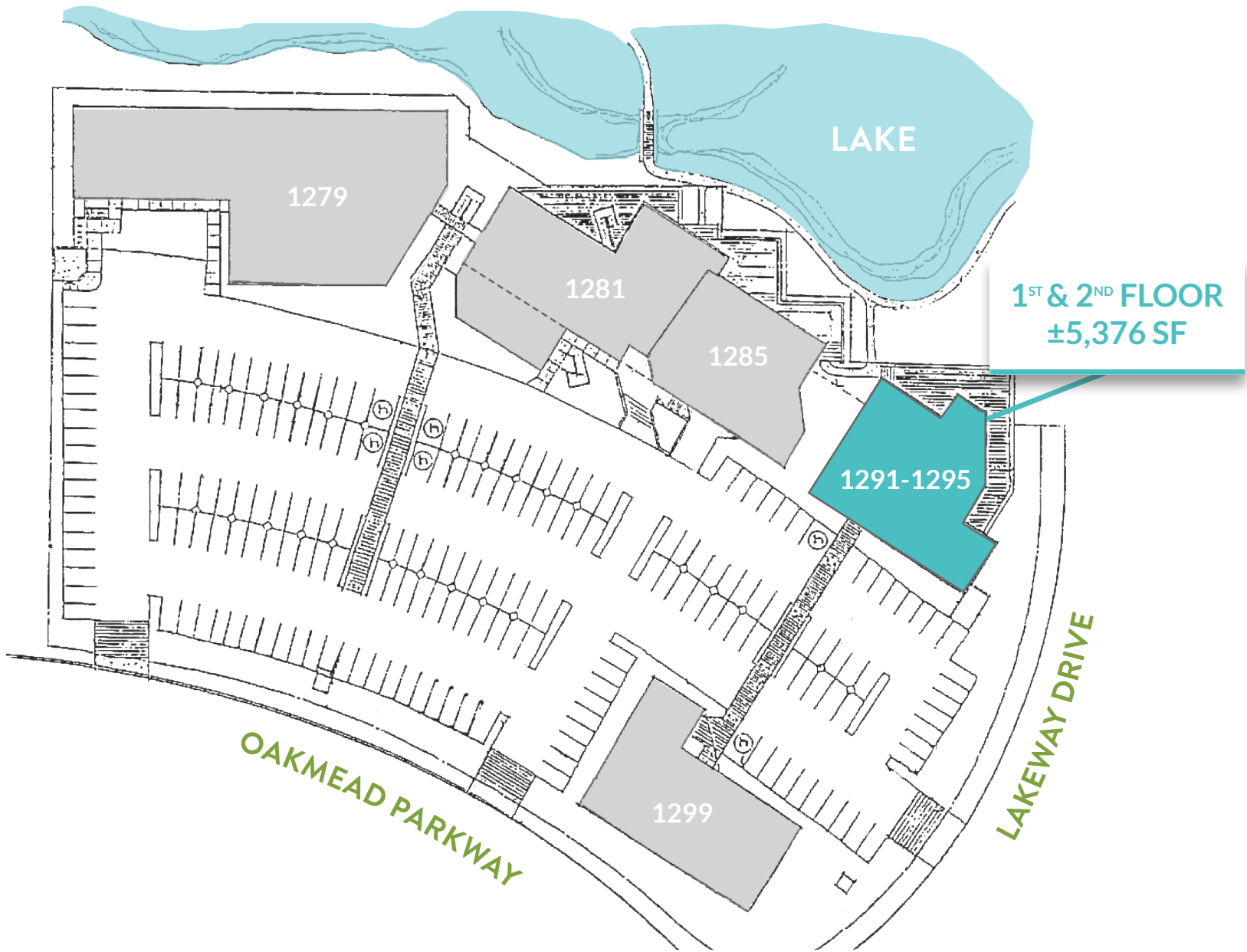
±5,376 SF FOR LEASE

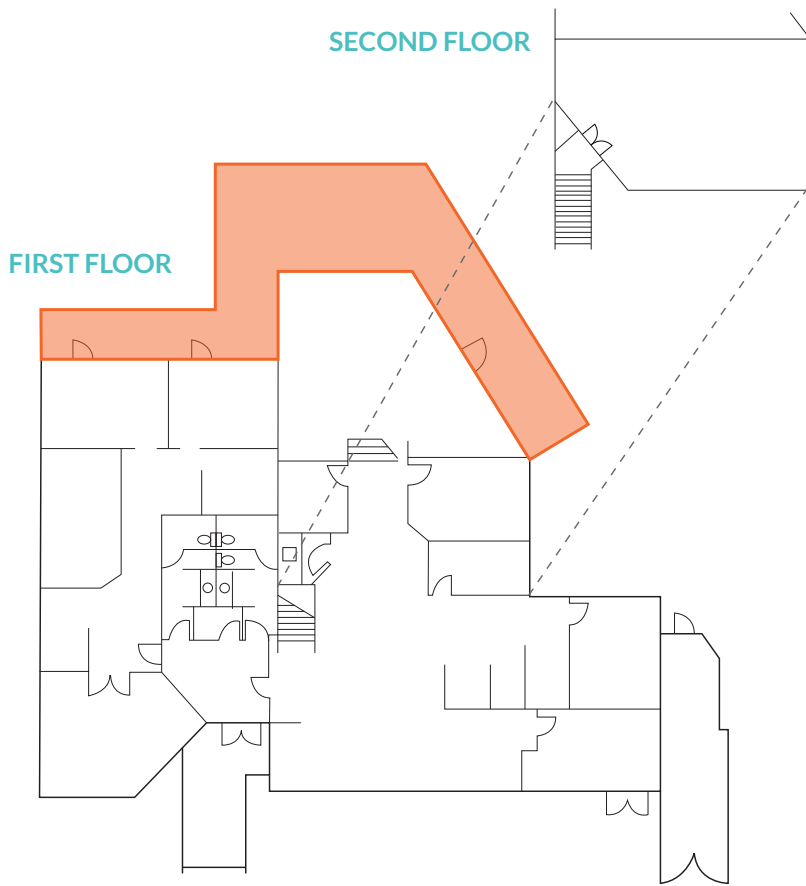
1291-1295 Oakmead Parkway
Available 9/1/2019

- Great Windowline with Views of Adjacent Lake
- Outdoor Deck
- 4/1,000 SF Parking
- Adjacent Restaurant & Retail Amenities
- 4 Minute Walk to Faultline Brewing Co.
- 4 Minute Drive to Santa Clara Square
- 1.6 Miles to Lawrence Caltrain Station
- Easy Access to Highways 101, 237 & Lawrence/Central Expressways



SITE PLAN

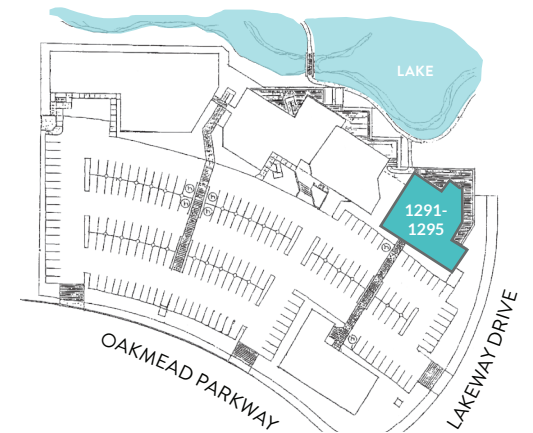




OUTDOOR DECK

1291-1295 OAKMEAD PARKWAY

- ±5,376 SF of Office Space
- Lake Views
- Deck Access
- High Ceiling Creative Space
- Glassed-In Atrium Open Office Area
- Extensive Glassline
- Available 9/1/19



LAKESIDE
OFFICE PLAZA

AMENITY MAP



- Barn Thai Restaurant
- Tia Juana Mexican Grill
- Dos Palomas Taqueria
- La Ronda
- Pizza Depot
- Pho'Vy
- Armenian Gourmet
- Sushi Blvd
- Obed Mediterranean Cuisine
- Danielle's Café Bake Shop
- Clarita's Filipino Cuisine
- Western Pacific Filipino Grocery

Fairoaks Mobile Lodge

1291-1295 OAKMEAD PARKWAY

Planet Granite Climbing Yoga Fitness

Madhaban Indian Cuisine
Coco's Subs Pizza
Una Mas
Merit Vegetarian
Bagel Place Café
Teanado
Sichuan Gourmet

Residence Inn Marriott

Ramada Hotel

Residence Inn Marriott

Avatar Hotel

Santa Clara Marriott

The Plaza Suites

Arcade Cafe

Embassy Suites Hilton

- Coco's Bakery Restaurant
- Una Mas
- Tasty Subs & Pizza
- Indian Fusion
- Mission City Cafe
- Pad Thai Cuisine
- St. John's Bar & Grill
- Sneha Restaurant
- Falafel Bites
- Subway
- Fresh U Order
- Luv Pho

Oakmead Village

- Restaurants
- Retail
- Fitness
- Hotels

LAKE SIDE

O F F I C E P L A Z A

1291-1295 OAKMEAD PARKWAY, SUNNYVALE

ERIK HALLGRIMSON | +1 408 615 3435 | erik.hallgrimson@cushwake.com | LIC #01274540

MARYANNA MCSWAIN | +1 408 615 3446 | maryanna.mcswain@cushwake.com | LIC #00696583

CLARK STEELE | +1 408 436 3653 | clark.steele@cushwake.com | LIC #01995379

