



**PREMIER  
PROPERTIES**  
COMMERCIAL  
REAL ESTATE

# FOR LEASE

## 234 MARSHALL STREET/ 700 WINSLOW STREET

Redwood City, CA

Suite 5-6: ±1,138 Sq. Ft. Office

Suite 7-8: ±1,169 Sq. Ft. Office

Suite 10: ±1,342 Sq. Ft. Office

Suite 12: ±389 Sq. Ft. Office

Suite 14: ±459 Sq. Ft. Office

Suite 15: ±459 Sq. Ft. Office

Suite 708: ±1,106 Sq. Ft. Office

### BRAD EHIKIAN

Partner

dre license #01736391

☎ | 650.618.3001

✉ | [brad.ehikian@prprop.com](mailto:brad.ehikian@prprop.com)

### JON GOLDMAN

Partner

dre license #01295503

☎ | 650.618.3003

✉ | [jon.goldman@prprop.com](mailto:jon.goldman@prprop.com)

### JESSE EBNER

Vice President

dre license #02055989

☎ | 650.618.3017

✉ | [jesse.ebner@prprop.com](mailto:jesse.ebner@prprop.com)

# 708 WINSLOW STREET

- ▶ New Renovations in a Rare Ground Floor Office
- ▶ Great Natural Light
- ▶ Mostly Open Layout
- ▶ 1 Conference Room & 1 Private Office
- ▶ In-Suite Restroom
- ▶ Excellent Downtown Redwood City Location
- ▶ One Block from Caltrain Station
- ▶ Surrounded by Restaurants & Amenities
- ▶ Available March 1, 2020



**BRAD EHIKIAN**  
Partner  
dre license #01736391  
☎ | 650.618.3001  
✉ | brad.ehikian@prprop.com

**JON GOLDMAN**  
Partner  
dre license #01295503  
☎ | 650.618.3003  
✉ | jon.goldman@prprop.com

**JESSE EBNER**  
Vice President  
dre license #02055989  
☎ | 650.618.3017  
✉ | jesse.ebner@prprop.com



# 708 WINSLOW FLOOR PLAN



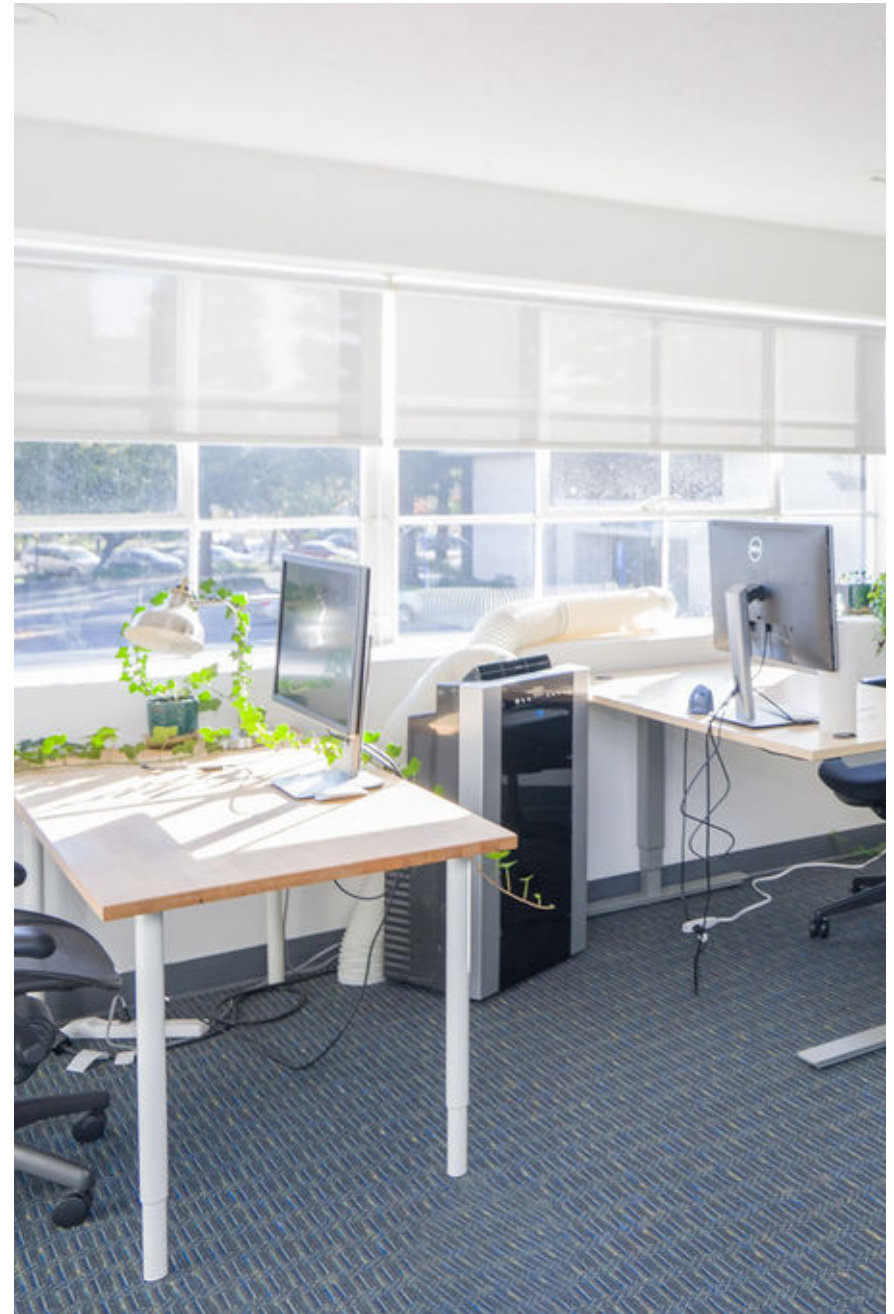
**BRAD EHIKIAN**  
Partner  
dre license #01736391  
☎ | 650.618.3001  
✉ | brad.ehikian@prprop.com

**JON GOLDMAN**  
Partner  
dre license #01295503  
☎ | 650.618.3003  
✉ | jon.goldman@prprop.com

**JESSE EBNER**  
Vice President  
dre license #02055989  
☎ | 650.618.3017  
✉ | jesse.ebner@prprop.com

# 234 MARSHALL STREET

- ▶ Recently Renovated Suites on the Second Floor
- ▶ One Block from Caltrain Station
- ▶ Prime Downtown Redwood City Location
- ▶ Large Windows with Abundant Natural Light
- ▶ Walking Distance to Amenities, Restaurants, & Retailers
- ▶ Available Immediately



**PREMIER  
PROPERTIES**  
COMMERCIAL  
REAL ESTATE

## BRAD EHIKIAN

Partner  
dre license #01736391  
📞 | 650.618.3001  
✉ | brad.ehikian@prprop.com

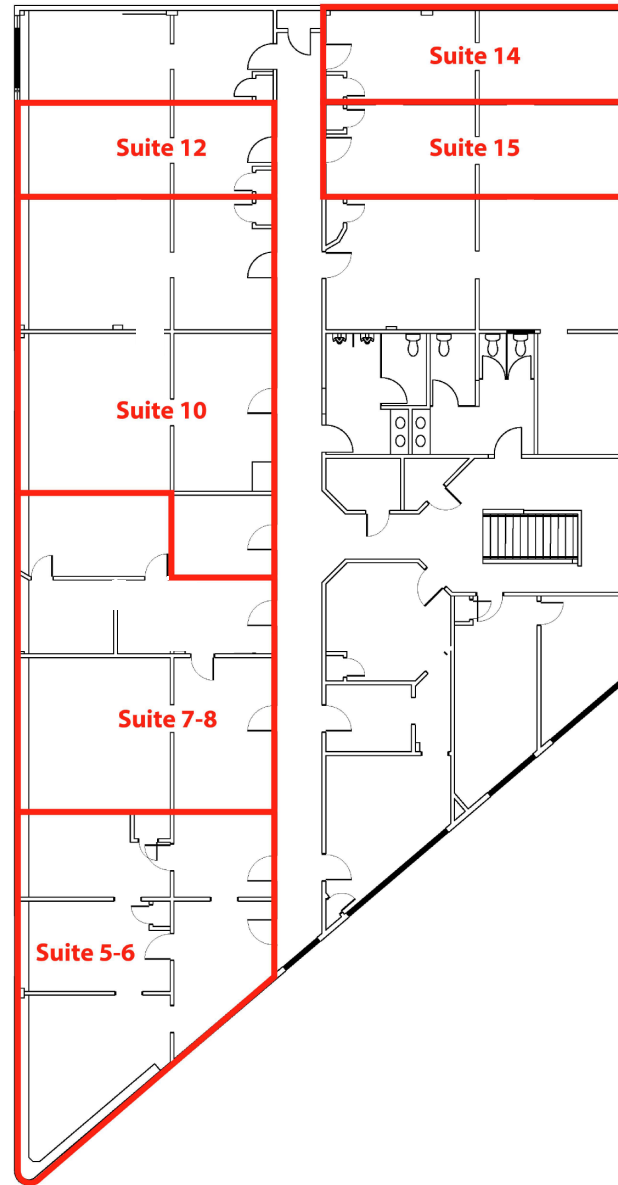
## JON GOLDMAN

Partner  
dre license #01295503  
📞 | 650.618.3003  
✉ | jon.goldman@prprop.com

## JESSE EBNER

Vice President  
dre license #02055989  
📞 | 650.618.3017  
✉ | jesse.ebner@prprop.com

# 234 MARSHALL FLOOR PLAN



**BRAD EHIKIAN**  
Partner  
dre license #01736391  
📞 | 650.618.3001  
✉ | brad.ehikian@prprop.com

**JON GOLDMAN**  
Partner  
dre license #01295503  
📞 | 650.618.3003  
✉ | jon.goldman@prprop.com

**JESSE EBNER**  
Vice President  
dre license #02055989  
📞 | 650.618.3017  
✉ | jesse.ebner@prprop.com



# 234 MARSHALL INTERIOR PHOTOS



**BRAD EHIKIAN**  
Partner  
dre license #01736391  
📞 | 650.618.3001  
✉ | brad.ehikian@prprop.com

**JON GOLDMAN**  
Partner  
dre license #01295503  
📞 | 650.618.3003  
✉ | jon.goldman@prprop.com

**JESSE EBNER**  
Vice President  
dre license #02055989  
📞 | 650.618.3017  
✉ | jesse.ebner@prprop.com



# TRANSPORTATION AERIAL



## PLANES

SJC - 21 miles  
SFO - 14 miles  
OAK - 29 miles



## TRAINS

San Francisco - 1 h 2 min  
Milbrae - 32 min  
San Jose - 49 min



## AUTOMOBILES

San Francisco - 27 miles  
Downtown San Jose - 29 miles  
Downtown Oakland - 35 miles

Sequoia Hospital

Sequoia High School

McKinley Institute of Technology

Downtown Redwood City

Kaiser Permanente Medical Center

234 MARSHALL ST  
REDWOOD CITY, CA

San Francisco

San Francisco Int. Airport

Downtown San Mateo

Downtown San Carlos

92

INTERSTATE 280

Caltrain

Caltrain

Bayshore Fwy (222,600 VPD)

El Camino Real (35,200 VPD)

Broadway



**BRAD EHIKIAN**  
Partner  
dre license #01736391  
☎ | 650.618.3001  
✉ | brad.ehikian@prprop.com

**JON GOLDMAN**  
Partner  
dre license #01295503  
☎ | 650.618.3003  
✉ | jon.goldman@prprop.com

**JESSE EBNER**  
Vice President  
dre license #02055989  
☎ | 650.618.3017  
✉ | jesse.ebner@prprop.com



# AMENITIES AERIAL



234 MARSHALL ST  
REDWOOD CITY, CA



**BRAD EHIKIAN**  
Partner  
dre license #01736391  
☎ | 650.618.3001  
✉ | brad.ehikian@prprop.com

**JON GOLDMAN**  
Partner  
dre license #01295503  
☎ | 650.618.3003  
✉ | jon.goldman@prprop.com

**JESSE EBNER**  
Vice President  
dre license #02055989  
☎ | 650.618.3017  
✉ | jesse.ebner@prprop.com



# DEMOGRAPHICS



ONE-MILE POPULATION: 30,371

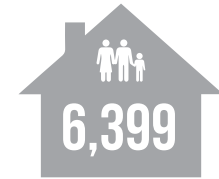
MEDIAN AGE

36.0

AVERAGE HOUSEHOLD SIZE



FAMILIES



FAMILIES

6,399



Average Household Income

\$106,138

Average Household Size: 2.6 | Owner Occupied Housing Units: 2,661 | Renter Occupied Housing Units: 6,177 | Median Household Income: \$65,356 | Average Household Income: \$106,138

## MAJOR EMPLOYERS:

Data for all businesses in area	1 mile
Total Businesses:	2,064
Total Employees:	25,902
Total Residential Population:	30,371
Employee/Residential Population Ratio (per 100 Residents)	85



**BRAD EHIKIAN**  
Partner  
dre license #01736391  
☎ | 650.618.3001  
✉ | brad.ehikian@prprop.com

**JON GOLDMAN**  
Partner  
dre license #01295503  
☎ | 650.618.3003  
✉ | jon.goldman@prprop.com

**JESSE EBNER**  
Vice President  
dre license #02055989  
☎ | 650.618.3017  
✉ | jesse.ebner@prprop.com