

MFG/WHSE: ±89,250 Sq.Ft.
YARD: ±3.00 Acres

FOR LEASE

Contra Costa Industrial Park



Scott Bertrand

Director
+1 925 627 2885
scott.bertrand@cushwake.com
LIC #01859508

Tim Schmid

Director
+1 925 627 2886
tim.schmid@cushwake.com
LIC #01847650

1333 N. California Blvd., Ste. 500
Walnut Creek, CA 94596
T: +1 925 935 0770
F: +1 925 935 3409
cushmanwakefield.com

©2017 Cushman & Wakefield. NO WARRANTY OR REPRESENTATION, EXPRESS OR IMPLIED, IS MADE TO THE ACCURACY OR COMPLETENESS OF THE INFORMATION CONTAINED HEREIN, AND SAME IS SUBMITTED SUBJECT TO ERRORS, OMISSIONS, CHANGE OF PRICE, RENTAL OR OTHER CONDITIONS, WITHDRAWAL WITHOUT NOTICE, AND TO ANY SPECIAL LISTING CONDITIONS IMPOSED BY THE PROPERTY OWNER(S). AS APPLICABLE, WE MAKE NO REPRESENTATION AS TO THE CONDITION OF THE PROPERTY (OR PROPERTIES) IN QUESTION.

[View Site Specific COVID-19 Prevention Plan](#)

FOR LEASE

Contra Costa Industrial Park

1501 Loveridge Road, Suite 15, Pittsburg, CA



Rare Combination of Crane-served High-cube Manufacturing/Warehouse Space with Yard and Rail

Suite Highlights:

Available: MFG/WHSE: ±89,250 SF
YARD: ±3.00 acres
Additional ±24,000 SF of adjacent mezzanine w/ freight elevator

Clear Height: ±42'

Cranes*: ±30' under the hook
Two (2) ±10-ton bridge cranes
One (1) ±15-ton bridge crane
One (1) ±25-ton bridge crane
Two (2) ±2-ton Jib cranes
* available per separate agreement

Grade-Level Loading: Seven (7) ±20' W x ±22.5' H doors
One (1) ±70' W x ±22.5' H sliding door

Power: Custom power available
1,000 amps@ 277/480 volts to premises
Substation on site

Sprinklers: Pipe Schedule system throughout

Rail: BNSF-served rail spur with direct line into the Southern end of the facility*

Column Spacing: Depth: ±24'
Width: ±29', ±56.5', ±57.5' (per bay)

*Tenant to verify condition of spur track and mainline connection

Property Highlights:

Gross Building SF: ±459,532 SF

Total Land: ±71.07 Acres

Year Built: Circa 1942, 1951, 1956

Site Addresses: 1101-1501 Loveridge Road

Close proximity to restaurant and retail amenities

APNs: 073-230-033-0
073-230-031-4
073-230-010-8
073-230-032-2
073-230-015-7 (Contra Costa County)

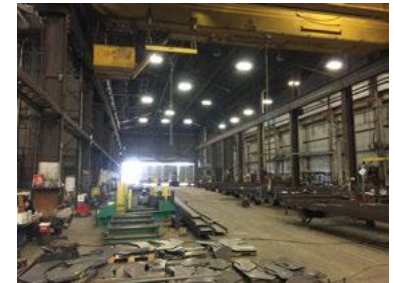
Distances: 0.62 miles to Hwy 4
1.78 miles to **NEW PITTSBURG BART STATION**
9.88 miles to Hwy 4/I-680 interchange
32.4 miles to Port of Oakland

Zoning: IG (General Industrial District)

Zoning Guide:



* For additional zoning information please contact Pittsburg City Planning: (925) 252-4920



Scott Bertrand

Director
+1 925 627 2885
scott.bertrand@cushwake.com
LIC #01859508

Tim Schmid

Director
+1 925 627 2886
tim.schmid@cushwake.com
LIC #01847650

FOR LEASE

Contra Costa Industrial Park

1501 Loveridge Road, Suite 15, Pittsburg, CA

HOME

HIGHLIGHTS

SITE LAYOUT

FLOOR PLAN

AERIAL

LOCATION

Site Layout



Scott Bertrand

Director
+1 925 627 2885
scott.bertrand@cushwake.com
LIC #01859508

Tim Schmid

Director
+1 925 627 2886
tim.schmid@cushwake.com
LIC #01847650

1333 N. California Blvd., Ste. 500
Walnut Creek, CA 94596
T: +1 925 935 0770
F: +1 925 935 3409
cushmanwakefield.com

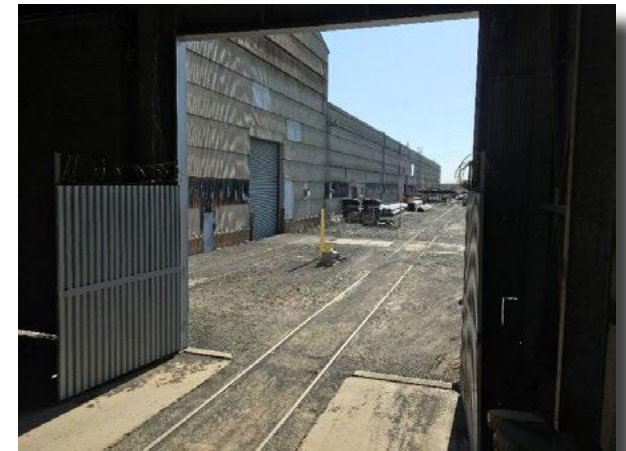
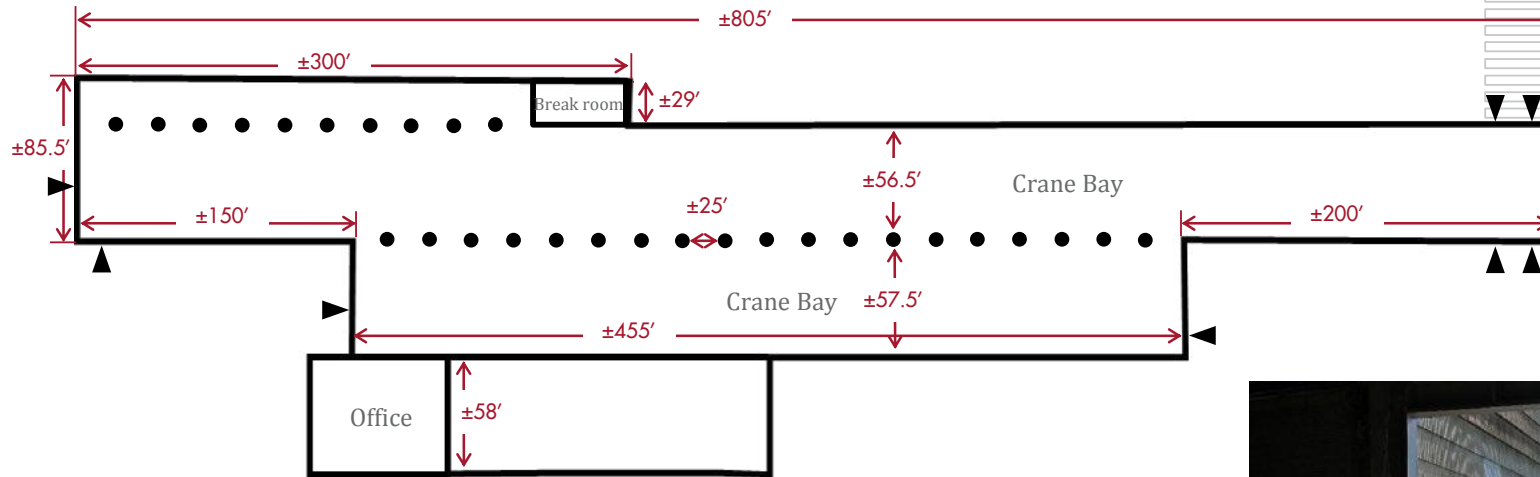
FOR LEASE

Contra Costa Industrial Park

1501 Loveridge Road, Suite 15, Pittsburg, CA



Floor Plan



Scott Bertrand

Director
+1 925 627 2885
scott.bertrand@cushwake.com
LIC #01859508

Tim Schmid

Director
+1 925 627 2886
tim.schmid@cushwake.com
LIC #01847650

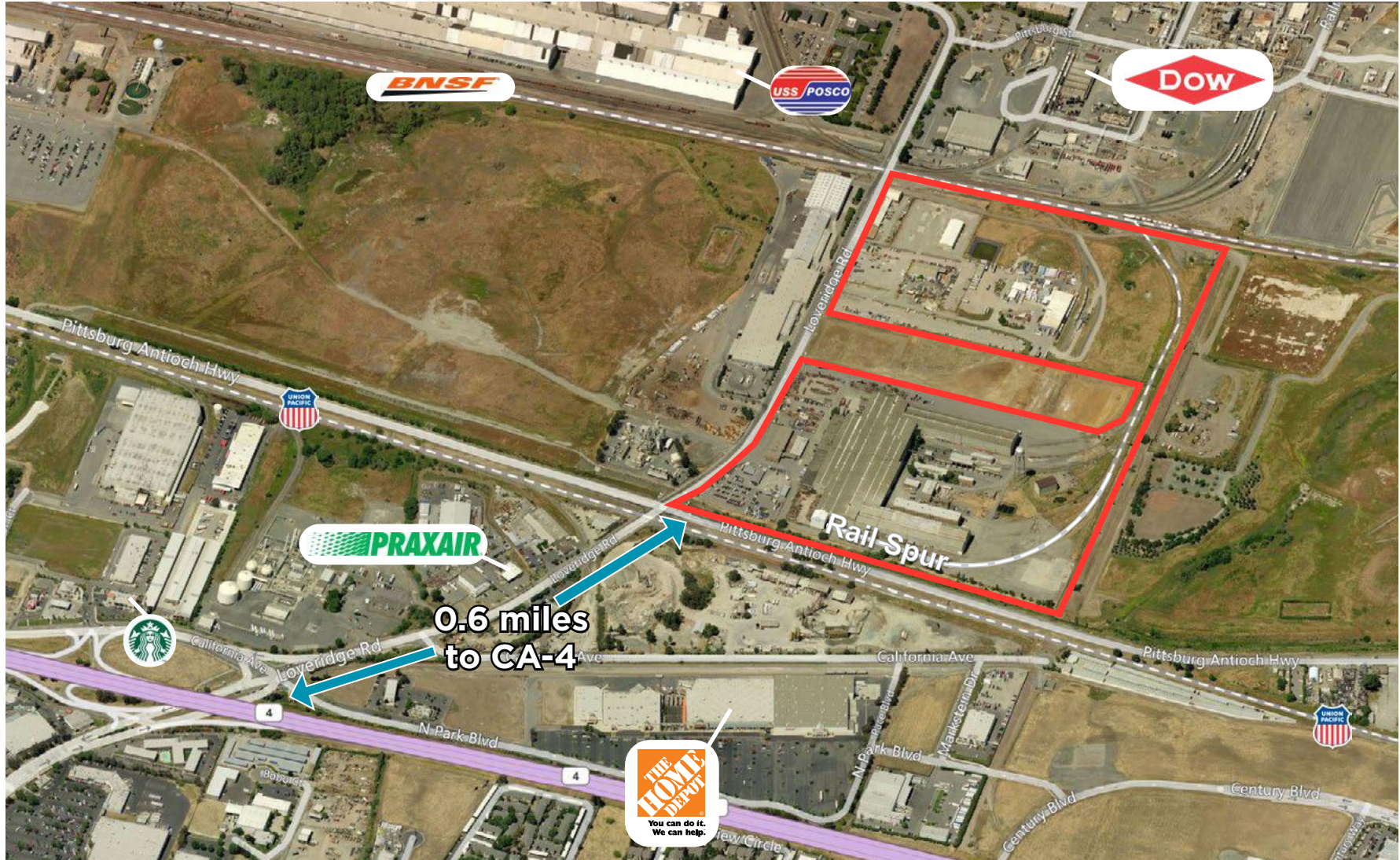
1333 N. California Blvd., Ste. 500
Walnut Creek, CA 94596
T: +1 925 935 0770
F: +1 925 935 3409
cushmanwakefield.com

FOR LEASE Contra Costa Industrial Park

1501 Loveridge Road, Suite 15, Pittsburg, CA

- HOME
- HIGHLIGHTS
- SITE LAYOUT
- FLOOR PLAN
- AERIAL**
- LOCATION

Aerial



FOR LEASE

Contra Costa Industrial Park

1501 Loveridge Road, Suite 15, Pittsburg, CA

HOME HIGHLIGHTS SITE LAYOUT FLOOR PLAN AERIAL LOCATION

Location

