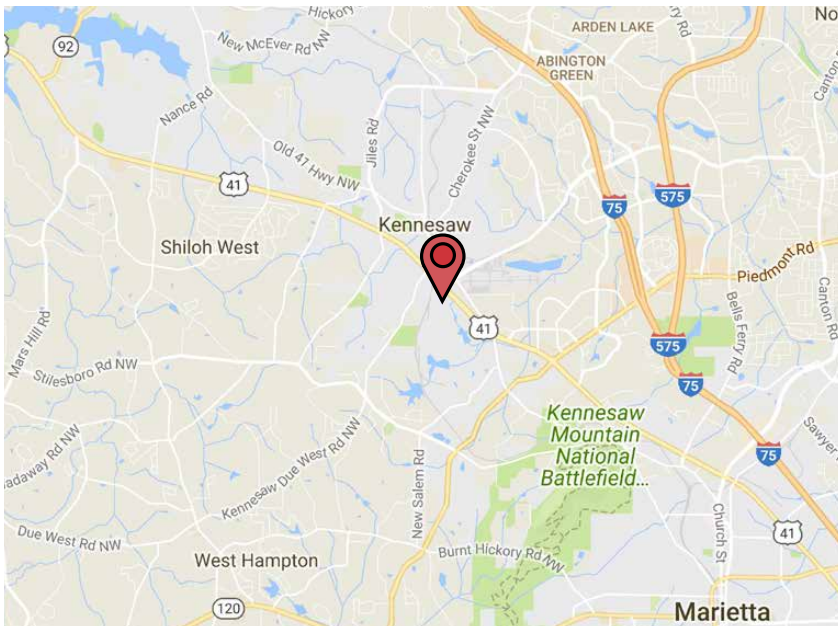




1890-2010 Cobb International Blvd **Kennesaw, GA 30152**



Quality Brick-on-Block Construction
Continuous Glass Storefronts
Rear-Loading Dock-High And Drive-In Ramps
Sprinklered
Well-Tended Landscaping in Controlled Park Setting
Direct Access to I-75 Via Chastain Road
Located off Hwy 41, 1.5 Miles North of Barrett Parkway

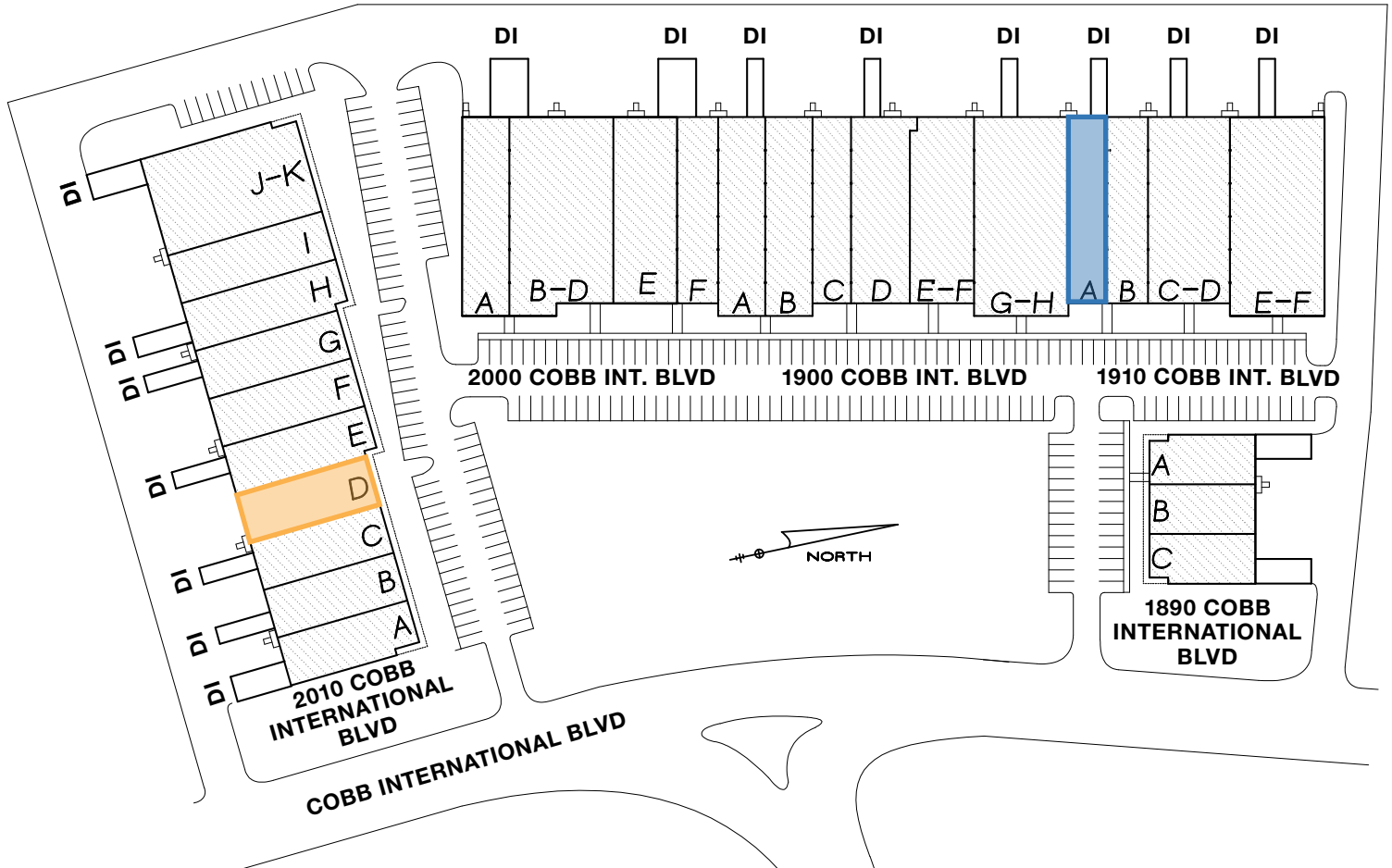
Information is deemed from reliable sources. No warranty is made as to its accuracy.

BROKER Information

Mark Sheffield
404 812 4007
msheffield@naibg.com

Ken Wiesen
404 812 4010
kwiesen@naibg.com

5555 Glenridge Connector, Suite 1100
Atlanta, GA 30342
404 812 4000
naibg.com



2010 Cobb Intl Blvd

Suite	Total SF	Office SF
D	4,560	1,019

2000 Cobb Intl Blvd

100% Leased

1900 Cobb Intl Blvd

100% Leased

1910 Cobb Intl Blvd

Suite	Total SF	Office SF
A	4,950	1,057

1890 Cobb Intl Blvd

100% Leased

BROKER Information

Mark Sheffield

404 812 4007
msheffield@naibg.com

Ken Wiesen

404 812 4010
kwiesen@naibg.com

Information is deemed from reliable sources. No warranty is made as to its accuracy.

SUITE	TOTAL SF	OFFICE SF	DH/DI	BASE RENTAL RATE/ RSF
BUILDING 1910				
A	4,950	1,057	1 / 1	\$7.75 NNN
BUILDING 2010				
D	4,560	1,019	1 / 0	\$7.75 NNN

BROKER Information

Mark Sheffield

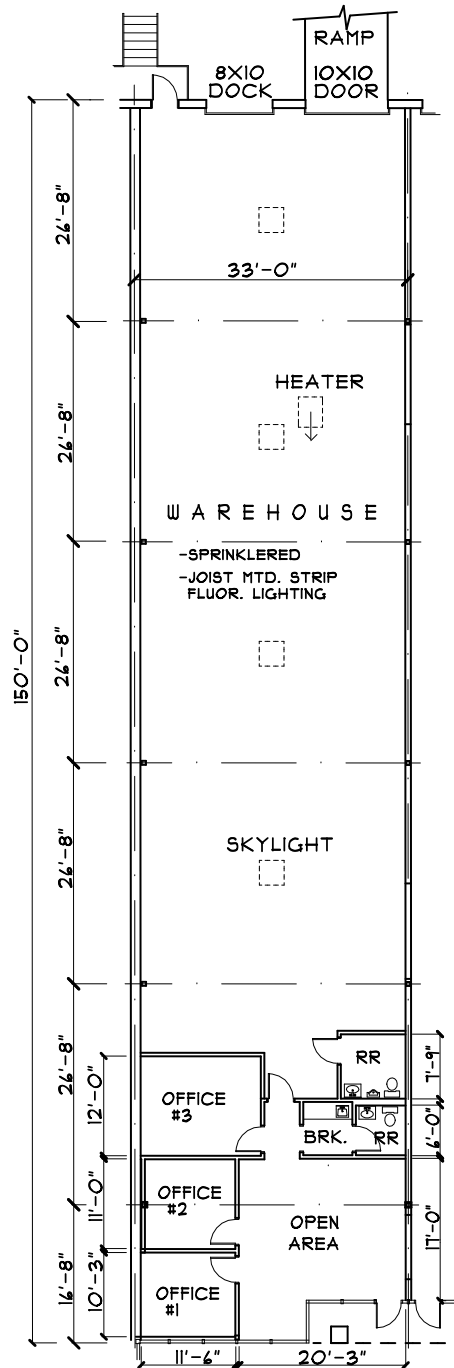
404 812 4007
msheffield@naibg.com

Ken Wiesen

404 812 4010
kwiesen@naibg.com

Information is deemed from reliable sources. No warranty is made as to its accuracy.

1910 COBB INTERNATIONAL BLVD
Suite A Floor Plan



SQUARE FOOTAGE	
OFFICE	1,057
WHSE.	3,893
TOTAL	4,950

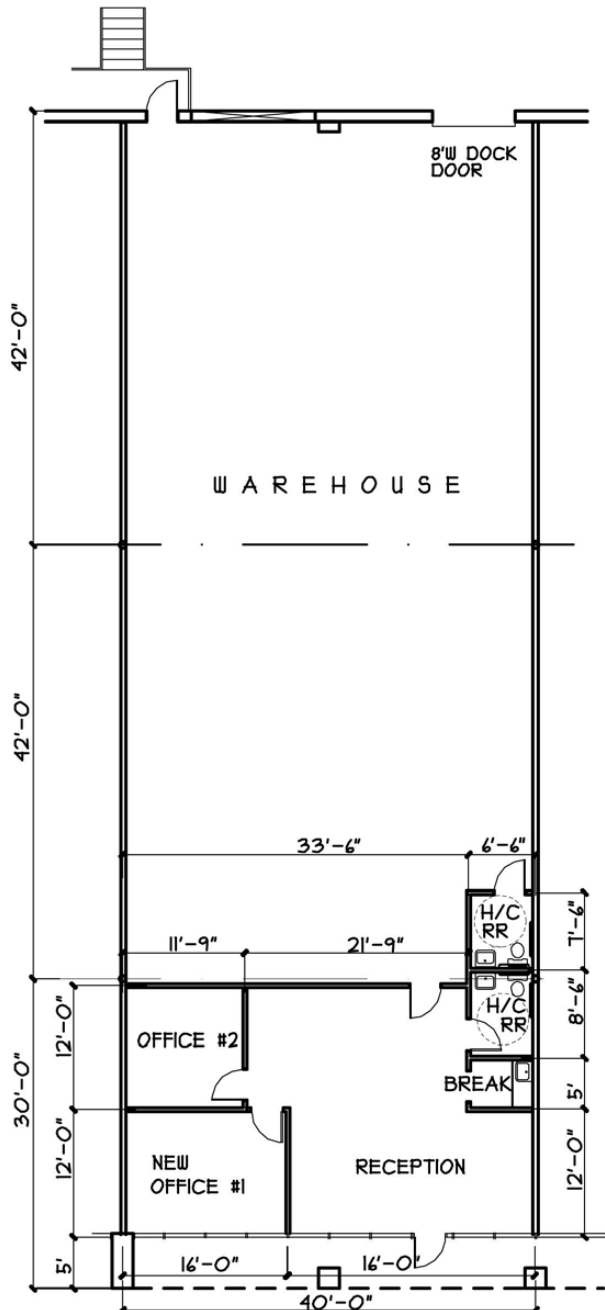
BROKER Information

Mark Sheffield
404 812 4007
msheffield@naibg.com

Ken Wiesen
404 812 4010
kwiesen@naibg.com

Information is deemed from reliable sources. No warranty is made as to its accuracy.

2010 COBB INTERNATIONAL BLVD
Suite D Floor Plan



APPROXIMATE SQUARE FOOTAGE	
OFFICE	1,019
WHSE.	3,541
TOTAL	4,560

BROKER Information

Mark Sheffield
404 812 4007
msheffield@naibg.com

Ken Wiesen
404 812 4010
kwiesen@naibg.com

Information is deemed from reliable sources. No warranty is made as to its accuracy.