

# 3151 Cahuenga Boulevard West

Los Angeles, CA 90068

OFFICE SPACE FOR LEASE



Charles Dunn

**CONTACT:**

**TODD M. WUSCHNIG**

Director

CalDRE #01367230

Direct | 818.455.8205

twuschnig@charlesdunn.com

**STACY VIERHEILIG-FRASER**

Senior Managing Director

CalDRE #00986794

Direct | 818.455.8201

svierheilig@charlesdunn.com

**CHARLES DUNN COMPANY, INC.**

12925 Riverside Drive, Suite 201 | Sherman Oaks, CA 91423 | Lic. #01201641 | charlesdunn.com

# PROPERTY DETAILS

3151 Cahuenga Boulevard West is an office building adjacent to Universal City. It is ideal location with easy access to San Fernando Valley, Burbank and Hollywood.

## PROPERTY FACTS

Lease Rate: \$2.00/SF Full Service Gross  
Parking: 2.5/1000 spaces at \$77.00/space  
Term: Negotiable

## PROPERTY HIGHLIGHTS

- > After hours HVAC available
- > Immediate freeway accessibility
- > On-site parking attendant
- > Balconies
- > On-site car wash

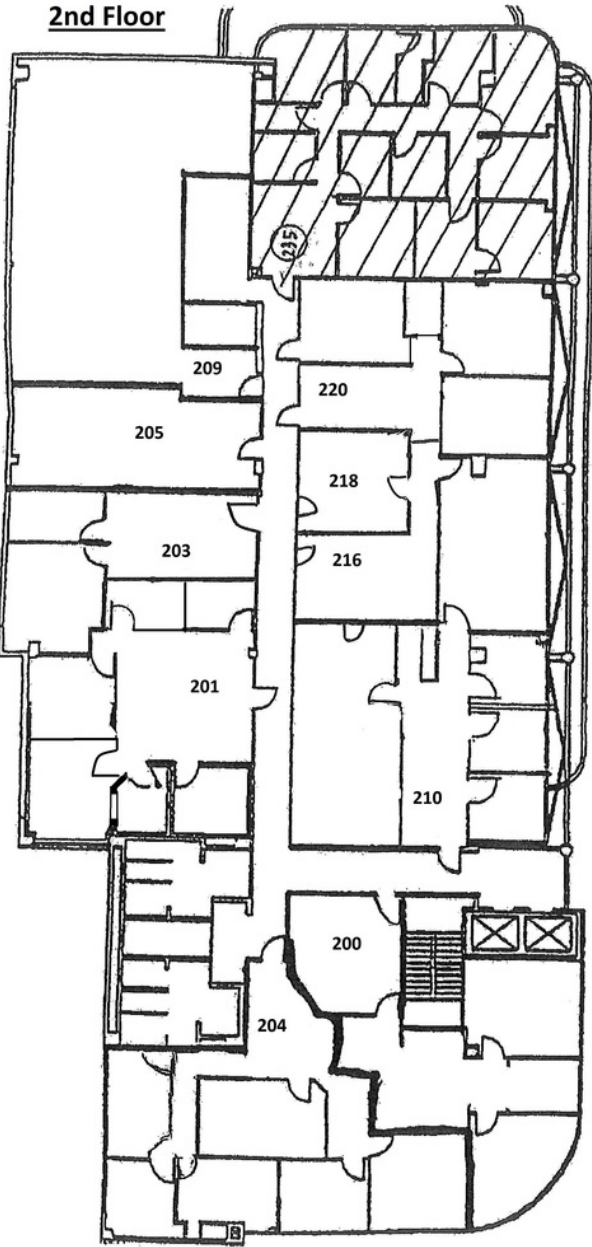
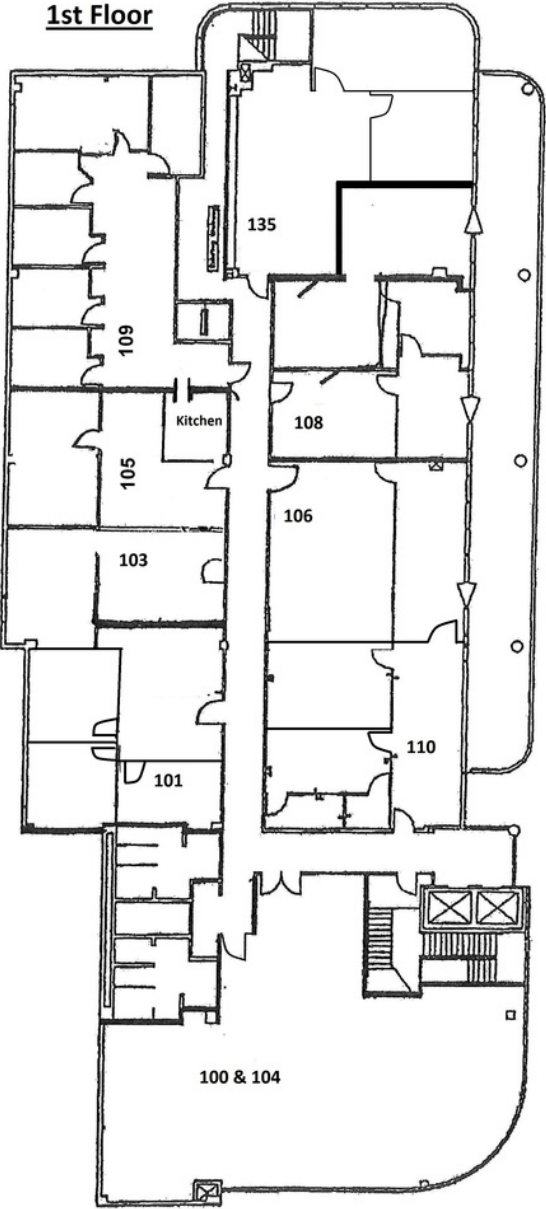


# PROPERTY DETAILS

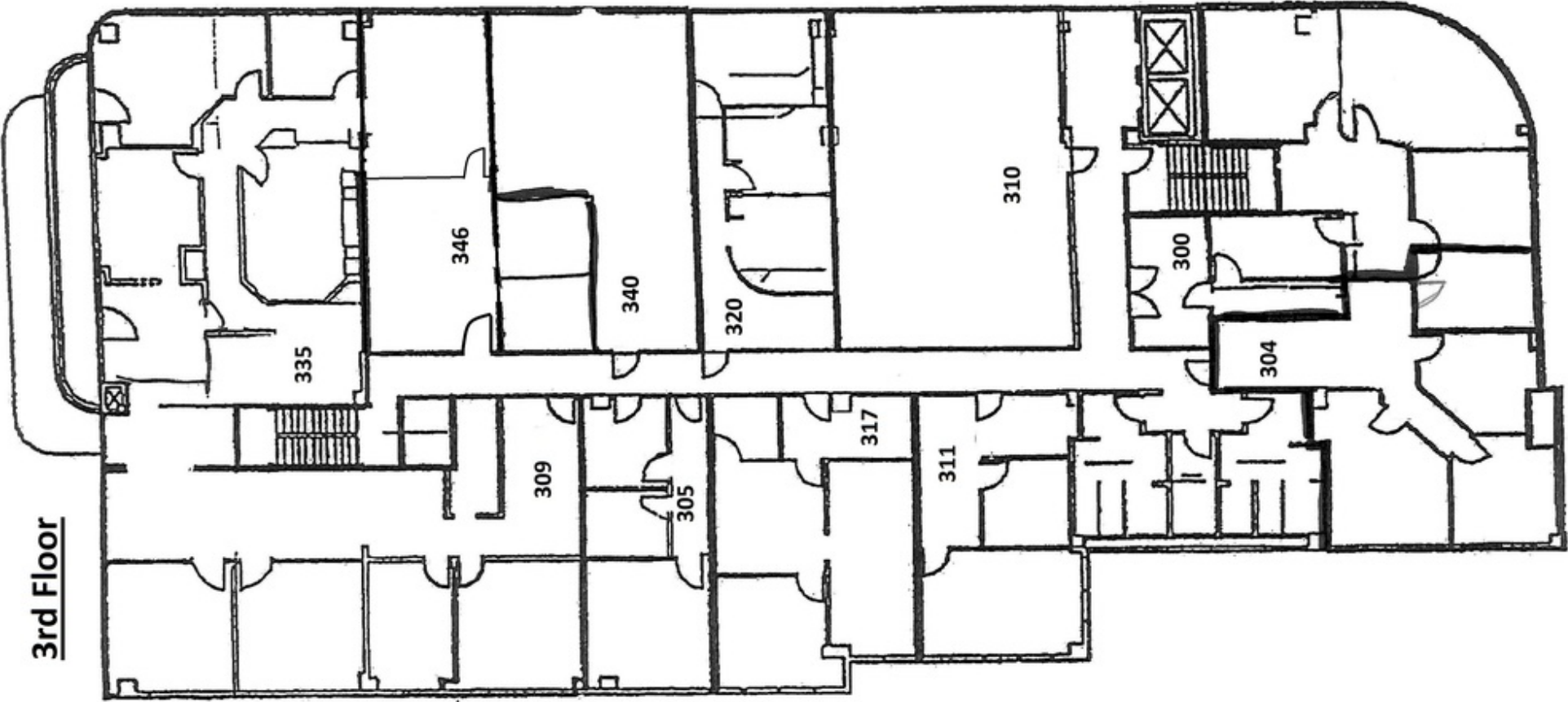
SUITE	SIZE	LEASE RATE	COMMENTS
Suite 100	± 3,200 SF	\$2.00/SF Full Service Gross	Hardwood Floors
Suite 209	± 2,000 SF	\$2.00/SF Full Service Gross	Hardwood Floors
Suite 310	± 1,600 SF	\$2.00/SF Full Service Gross	Open Layout Hardwood Floors



# FLOOR PLANS

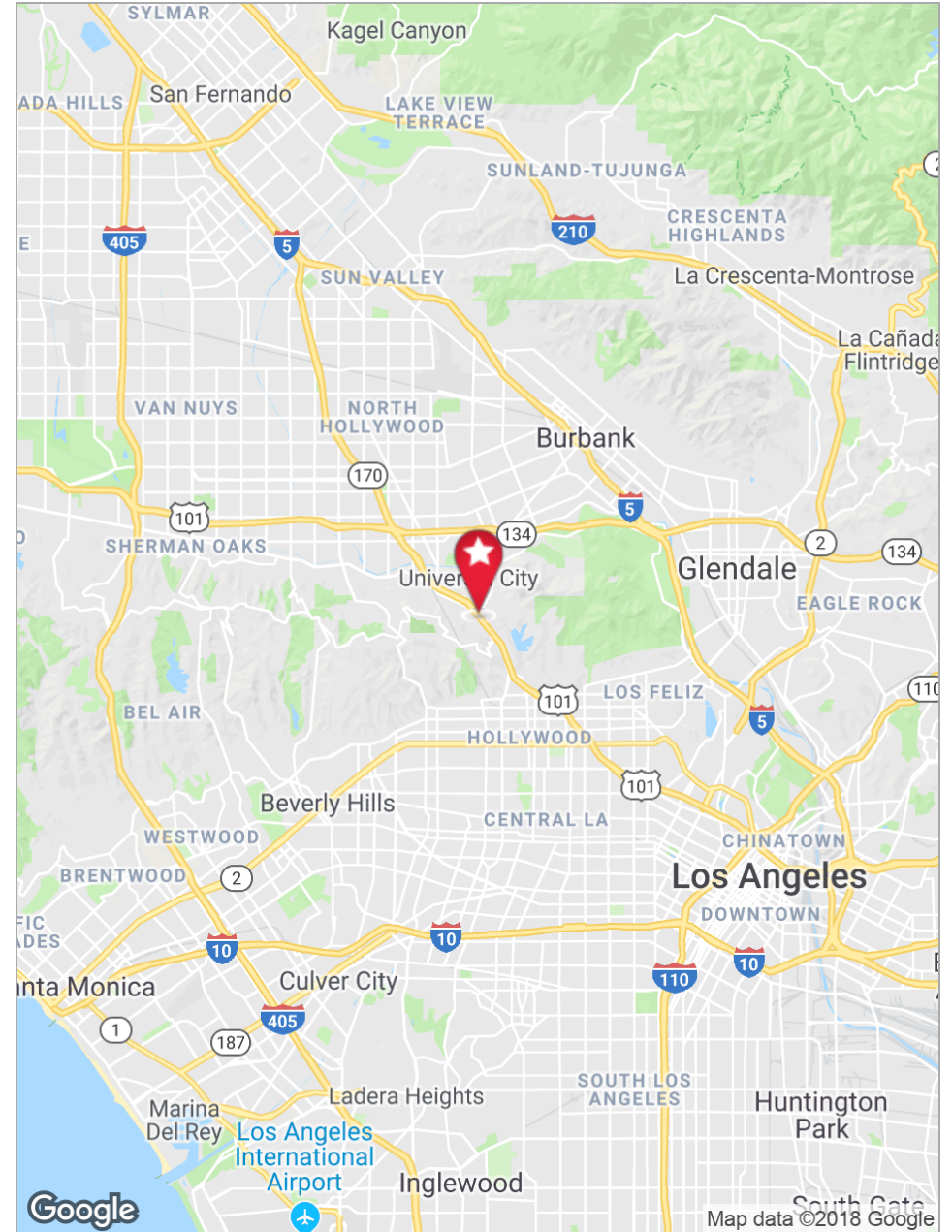
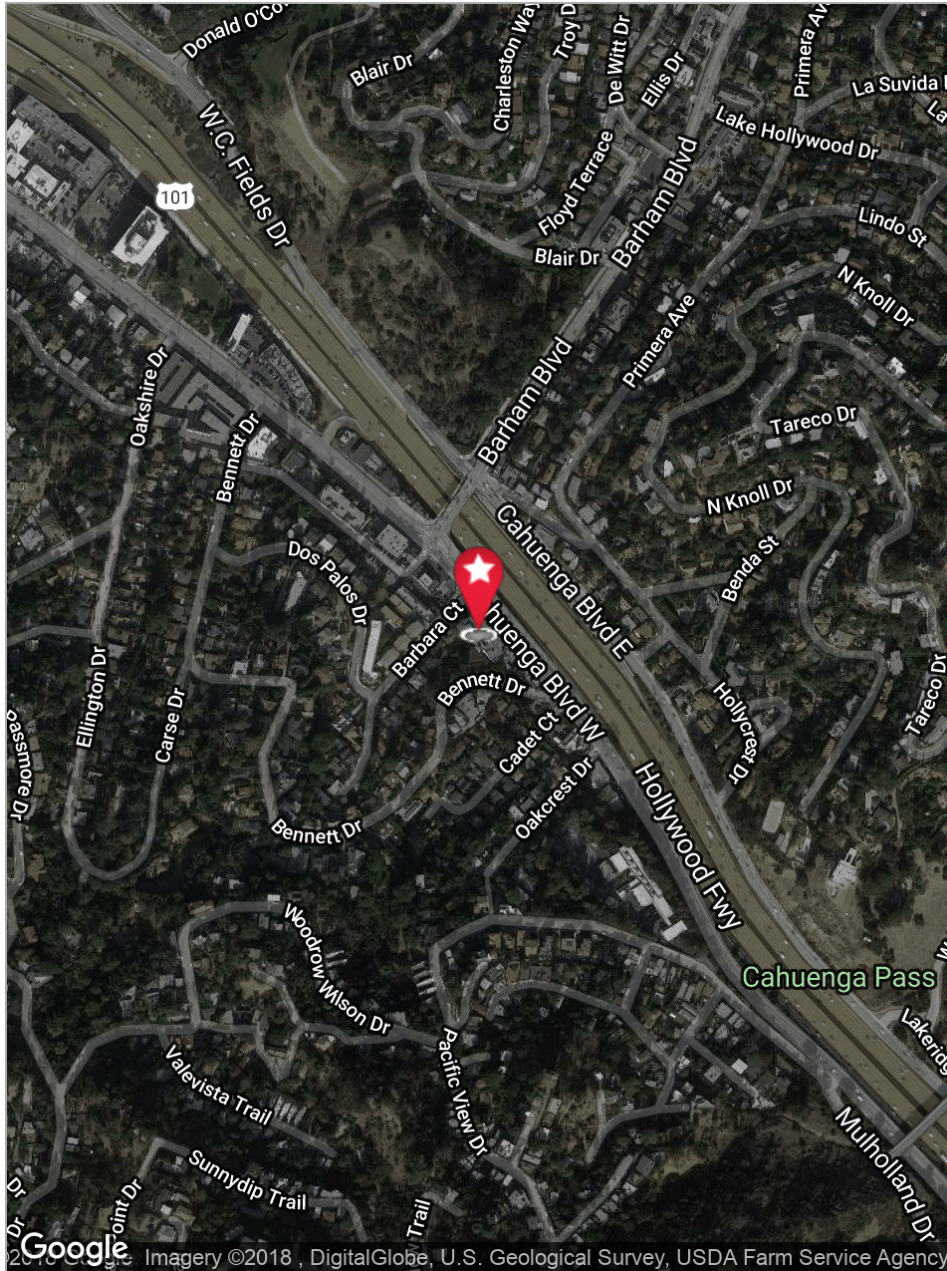


# FLOOR PLANS



3rd Floor

# PROPERTY MAPS



# 3151 Cahuenga Boulevard West

Los Angeles, CA 90068

**TODD M. WUSCHNIG**

Director

CalDRE #01367230

Direct | 818.455.8205

[twuschnig@charlesdunn.com](mailto:twuschnig@charlesdunn.com)

**STACY VIERHEILIG-FRASER**

Senior Managing Director

CalDRE #00986794

Direct | 818.455.8201

[svierheilig@charlesdunn.com](mailto:svierheilig@charlesdunn.com)

**Charles Dunn Company, Inc. | 12925 Riverside Drive, Suite 201 | Sherman Oaks, CA 91423 | Lic. #01201641 | [charlesdunn.com](http://charlesdunn.com)**