



FOR LEASE

NEW MARKET THEATER

115 SW ASH STREET
PORTLAND, OR 97204

PLEASE CALL FOR RATES

JOSH BEAN
Josh@ECA-NW.com

BRIAN HANSON
Brian@ECA-NW.com

503.205.0610

ETHOS COMMERCIAL ADVISORS LLC | 2222 NE OREGON ST, SUITE 209 | PORTLAND, OR 97232

Information contained herein has been obtained from others and is considered to be reliable. However, a prospective purchaser or lessee is expected to verify all information to their own satisfaction.

LICENSED IN THE STATE OF OREGON



The New Market Theater, built in 1872, is regarded as one of the most historic and significant buildings of early Portland. The building once held a 1,200-seat theater and a public market on its main floor. This legendary hub of culture and commerce is once again a center of innovation and creativity.

The New Market Theater Block was recently renovated and continues to capture Portland's legacy of discovery, independence and invention in captivating workspaces.

LOCATION

The New Market Theater has a lot to offer – numerous nearby food, drink, and entertainment options, multiple modes of public transportation, nearby parking, and a downtown location.

The New Market Theater location is easily accessible and conveniently located blocks from the Burnside and Morrison bridges. Public transportation options abound. The 12, 16, 19, 20, and 35 buses as well as the red, blue, green and orange street car lines all have stops within three blocks of Pine Street Market.

HIGHLIGHTS

- Exposed brick and wood finishes
- Historic architecture
- Onsite café
- New fitness room, secure bicycle parking and tenant shower facilities
- Conference facilities
- Public transit accessible – 5 bus and 4 streetcar lines
- City and river views from select suites

New Fitness Room

Plus secure bicycle parking and tenant shower facilities

Conference Facilities

Historic Architecture

Exposed brick and wood finishes



Walk Score
97



Transit Score
94



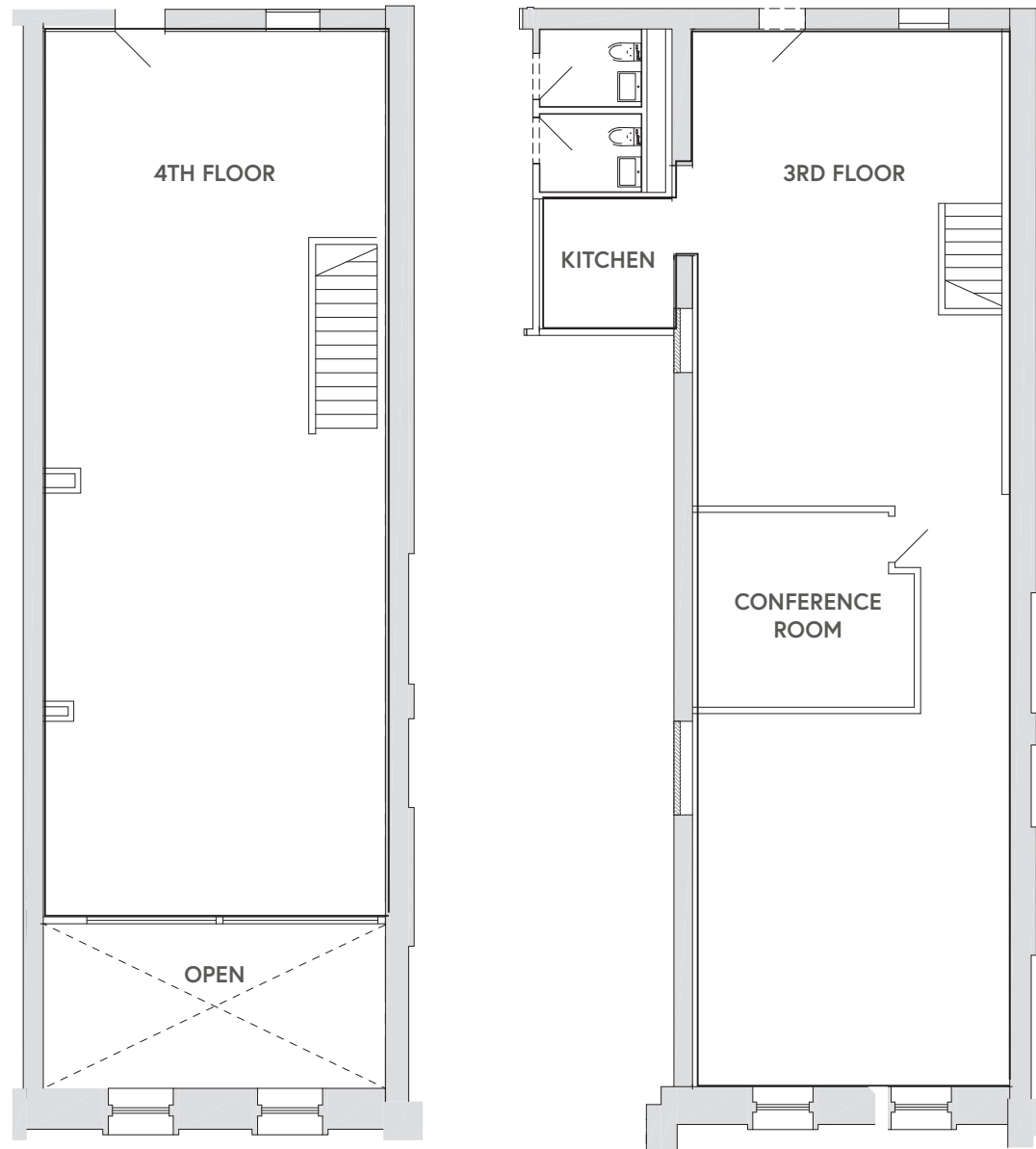
Bike Score
99



THE NEW MARKET THEATER

SUITE 302 | +/-3,266 RSF

- Two floor suite with internal stairs
- Open office with exposed brick
- Kitchenette and conference room on 3rd floor



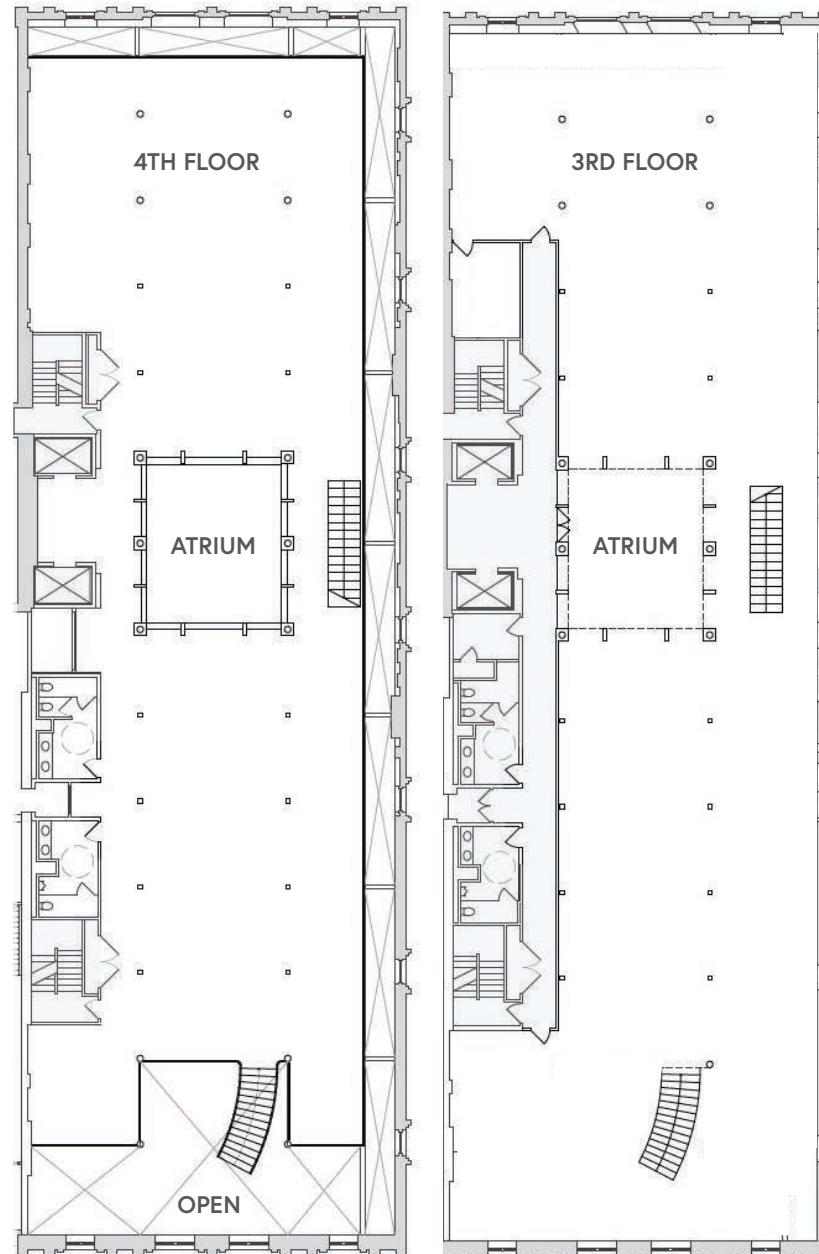
THIS DRAWING IS NOT TO SCALE AND IS FOR ILLUSTRATIVE PURPOSES ONLY



THE NEW MARKET THEATER

SUITE 400 | +/-20,533 RSF

- Shell condition suite with competitive tenant improvement allowance available
- Two floor office suite with vaulted ceilings and large windows on three sides
- Exposed brick and beam throughout the space
- Divisible down to +/-7,932 RSF



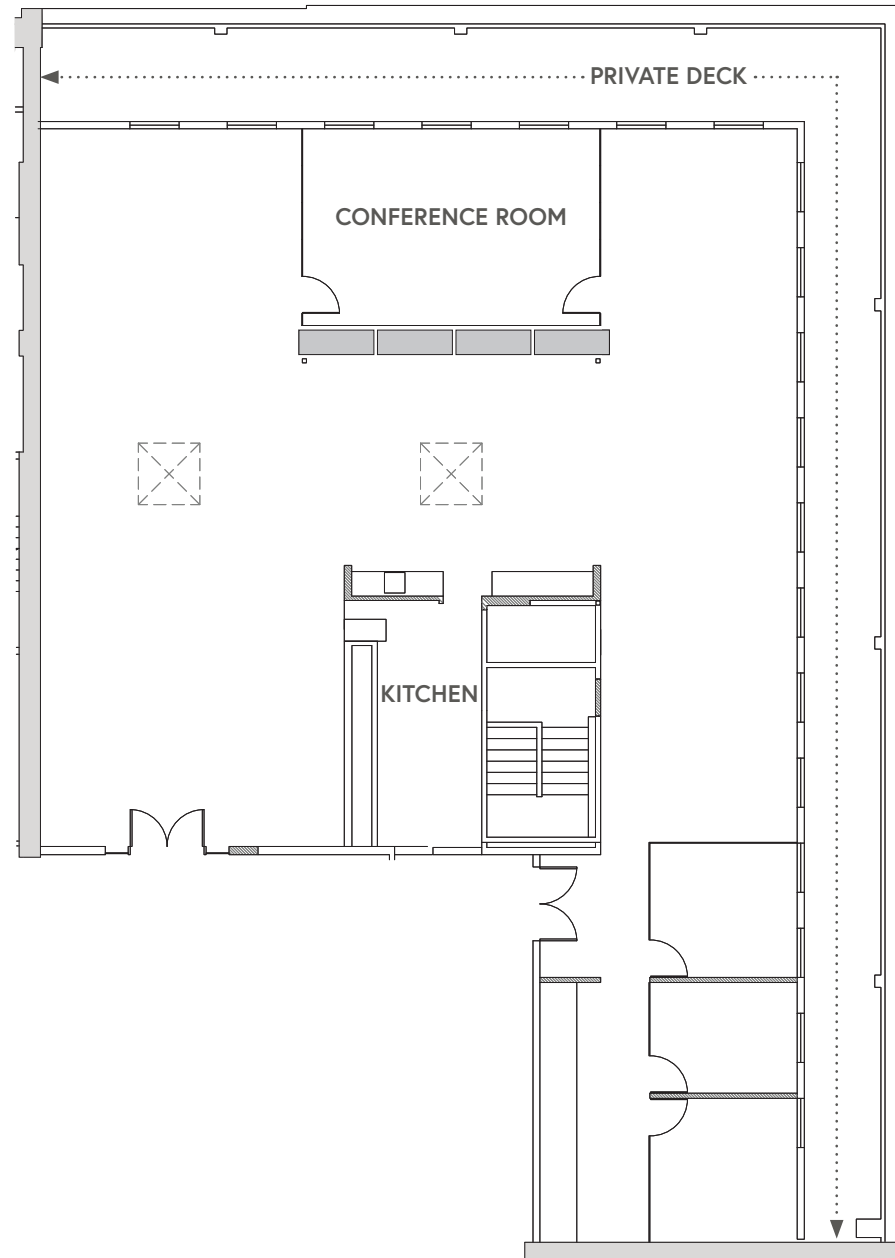
THIS DRAWING IS NOT TO SCALE AND IS FOR ILLUSTRATIVE PURPOSES ONLY



THE NEW MARKET THEATER

SUITE 500 | +/-4,872 RSF

- Private deck
- New spec-built creative office
- Two full sides of glass plus skylights provide abundant natural light
- Large kitchen and dining area
- Large conference room overlooking the Willamette River
- Exposed brick throughout
- Three private offices



THIS DRAWING IS NOT TO SCALE AND IS FOR ILLUSTRATIVE PURPOSES ONLY







● Restaurants

● Hotels

● Parking

--- MAX Lines

--- Bus Routes

--- Streetcar Lines

1. Pine Street Market

2. Kell's Irish Restaurant & Pub

3. Lechon

4. Captain Ankeny's Pizza & Pub

5. Kalé

6. E-San Thai Cuisine

7. Stumptown Coffee Roasters

8. Mother's Bistro

9. Voodoo Donut

10. Dan & Louis Oyster Bar

1. Embassy Suites by Hilton

2. Hi-Lo Hotel

3. Kimpton Hotel Monaco

4. The Nines

5. Marriott City Center

6. Kimpton Hotel Vintage

7. Hotel Lucia

8. The Benson

9. Courtyard by Marriott

10. The Society Hotel