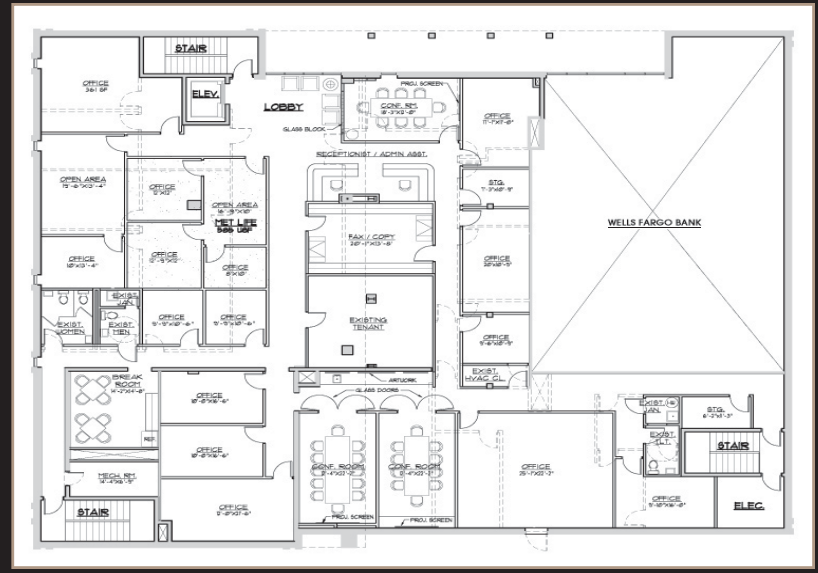


**FOR LEASE**

# THE BOARDWALK COMPANY



**13,000 SF Total  
5,000 SF 1 Floor  
8,000 SF 1 Floor**

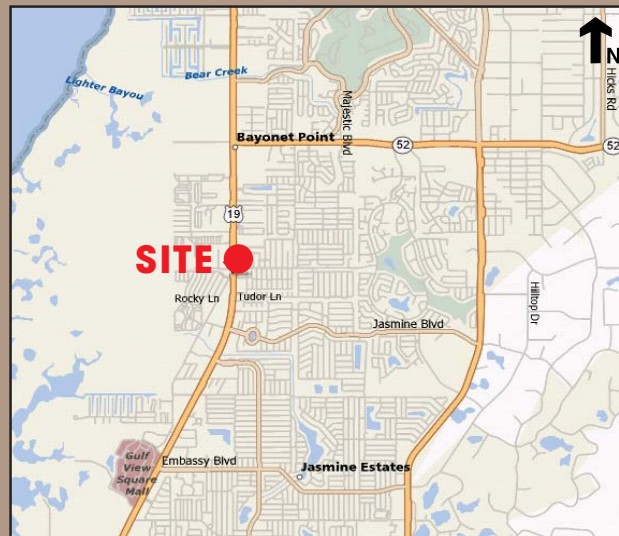
**Lease Price: \$14.00 PSF – General Office  
\$18.00 PSF – Executive Office**

**Includes: electric, phone, Hi-speed, janitorial, conference room facilities and admin support**

## U.S. HIGHWAY 19 OFFICE SPACE

**Property #3159**

- 10934 U.S. Highway 19, Port Richey, FL 34668
- Prominent Wells Fargo Bank, 4-story office building with elevator
- Located on the southeast corner of U.S. 19 and Ranch Road
- Custom designed floor plans
- High quality materials and trim with standard build-out
- Tenants choice to upgrade building materials
- Executive suites range in size from 1,00 to 13,000 SF
- Total Acreage of property is 2.81 acres



For more information, contact

**Anthony Saravanos, CCIM**

office: 727.784.1007  
fax: 727.784.1008  
cell: 727.643.8922

asaravanos@boardwalkcompany.com

31640 U.S. Hwy. 19 N, Suite 1  
Palm Harbor, Florida 34684

www.BoardwalkCompany.com  
LICENSED REAL ESTATE BROKER

This information contained herein was collected from sources deemed to be reliable. The Boardwalk Company its Agents and Seller make no warranties or representations of any manner as to the accuracy, and the same is subject to misstatements of fact, errors or omissions, prior sale, change of price, terms, withdrawal from market without notice or other modifications. Buyer, tenants and/or all other parties shall verify all information independently.