

VACANT COMMERCIAL LAND

411-415 SOUTH PITNEY ROAD, GALLOWAY, NJ 08205

±10.5 ACRES AVAILABLE

NEARBY RETAILERS



Bank



property highlights.

- 10.5 acres of flat readily developable land
- Galloway Township is a growing upscale suburb of Atlantic City
- Property is zoned CVC - Community Village Commercial
- Property has frontage on South Pitney Road and South Eighth Avenue



stats.

2018 DEMOGRAPHICS*	1 MILE	3 MILES	5 MILES
EST. POPULATION	3,197	31,635	56,057
EST. HOUSEHOLDS	1,095	11,405	19,334
EST. AVG. HH INCOME	\$103,550	\$88,420	\$80,613

SOUTH PITNEY ROAD TRAFFIC COUNT: 12,524 VPD *ESRI 2018



METRO[®]
COMMERCIAL
REAL ESTATE, INC.

MetroCommercial.com | PHILADELPHIA, PA | PLYMOUTH MEETING, PA | MOUNT LAUREL, NJ | NAPLES, FL

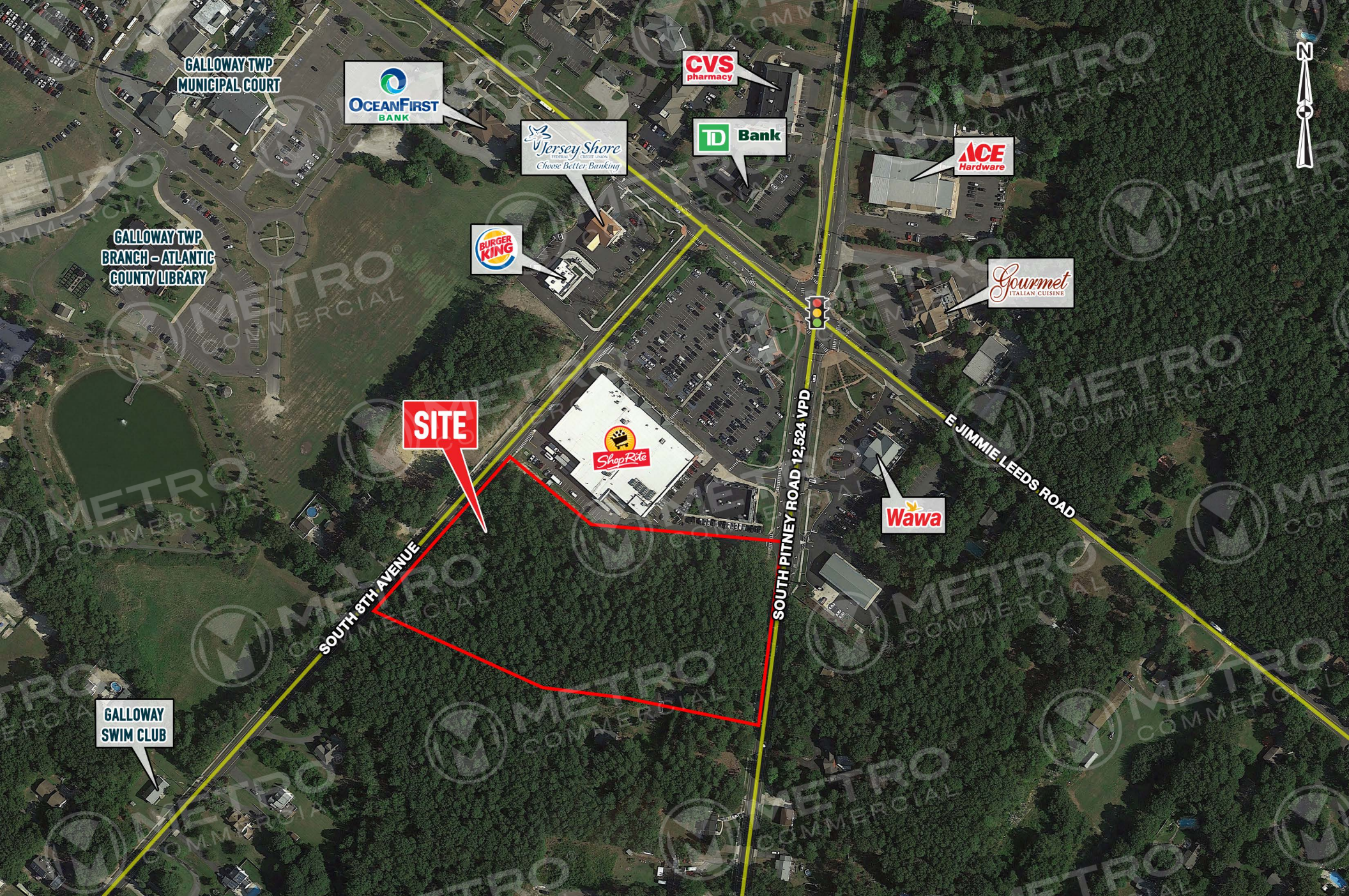
get in touch.

MARK GERLACH

office 856.866.1900

direct 856.222.3032

mgerlach@metrocommercial.com



The information and images contained herein are from sources deemed reliable. However, Metro Commercial Real Estate, Inc. makes no representation whatsoever as to their accuracy or authenticity. Images shown may be modified for illustrative purposes. Images may be out-of-date and not current. 4.09.19

**411-415 SOUTH PITNEY ROAD
GALLOWAY, NJ**





The information and images contained herein are from sources deemed reliable. However, Metro Commercial Real Estate, Inc. makes no representation whatsoever as to their accuracy or authenticity. Images shown may be modified for illustrative purposes. Images may be out-of-date and not current. 4.09.19

**411-415 SOUTH PITNEY ROAD
GALLOWAY, NJ**

