

East Williamsburg / Bushwick Space for Lease - Up to 20,600 SF



65-87 Porter Avenue, NYC - Block-thru between Harrison Place & Ingraham Street

APPROXIMATE SIZE

Ground: 2,500 - 20,600 sf

CEILING HEIGHT

Ground Floor 18 ft

RENT

Upon Request

POSSESSION

Immediate

APPROX. FRONTAGE

67 ft. on Harrison Place

200 ft. on Porter Avenue

120 ft. on Ingraham Street

COMMENTS

- ♦ Area Tenants: Falansai, Robertas, Momo Sushi, Bunna Cafe, Pine Box, Quadalupe Inn, Kávė
- ♦ Two blocks from Morgan Avenue L train
- ♦ All uses considered
- ♦ Tenants relocating from Manhattan are eligible for a tax credit up to \$3,000 per employee per year for 12 years



FOR INFORMATION CONTACT:

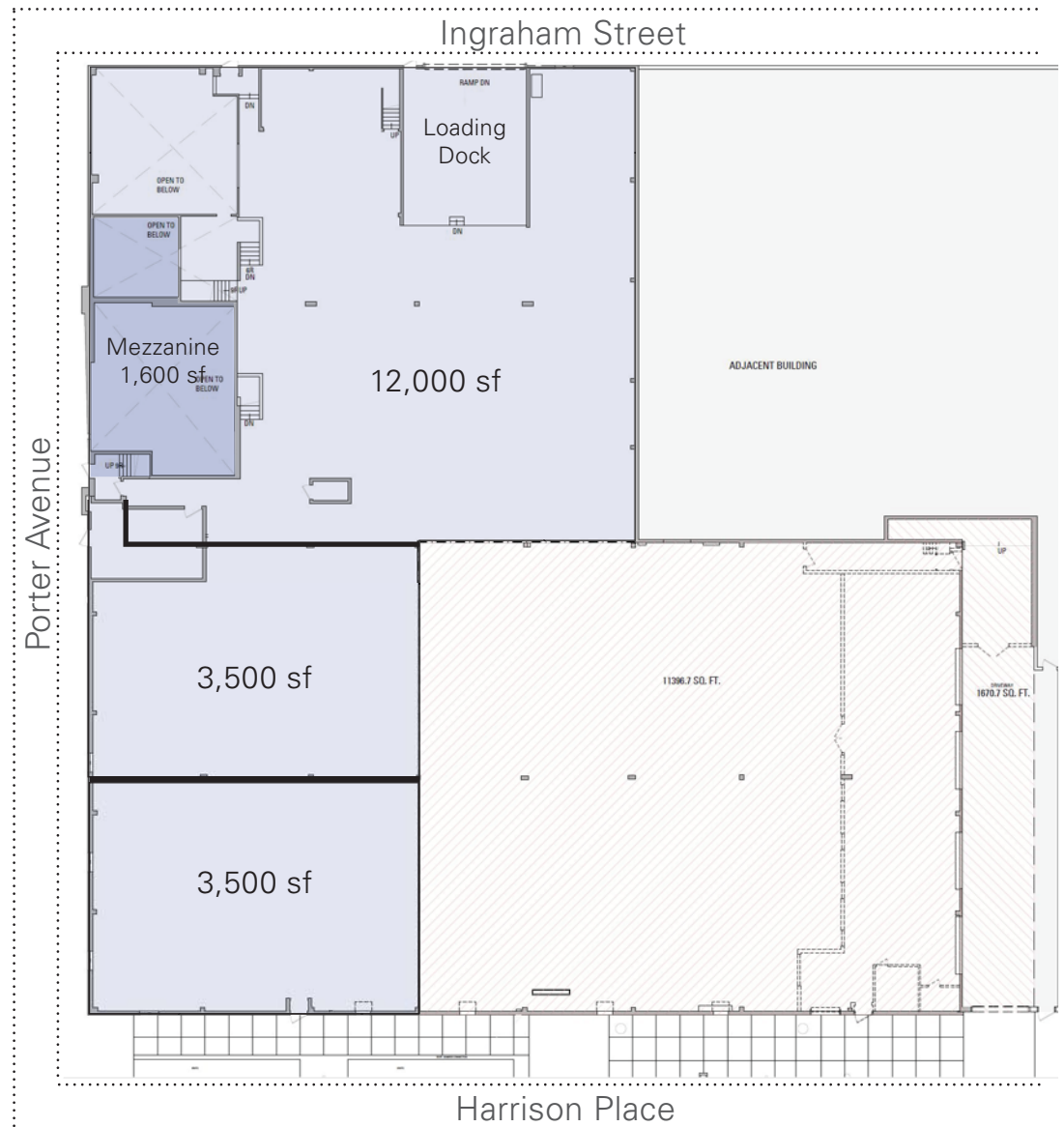
BEN WALLER | Licensed Associate Real Estate Broker
212-400-9515 | bwaller@absre.com

ABS Partners Real Estate, LLC • 200 Park Avenue South, New York, NY 10003 • T 212.400.6060 • F 212.400.6099 www.absre.com

"All information is from sources deemed reliable but is subject to errors or omissions of any magnitude, withdrawal from market, or changes in terms, all without notice. Brokers employment and payment only by written agreement."
*Licensed Real Estate Broker • **Licensed Associate Real Estate Broker • ***Licensed Real Estate Salesperson



65-87 Porter Avenue, Brooklyn, NYC



FOR INFORMATION CONTACT:

BEN WALLER | Licensed Associate Real Estate Broker
212-400-9515 | bwaller@absre.com

ABS Partners Real Estate, LLC • 200 Park Avenue South, New York, NY 10003 • T 212.400.6060 • F 212.400.6099 www.absre.com

*All information is from sources deemed reliable but is subject to errors or omissions of any magnitude, withdrawal from market, or changes in terms, all without notice. Brokers employment and payment only by written agreement.

*Licensed Real Estate Broker • **Licensed Associate Real Estate Broker • ***Licensed Real Estate Salesperson



65-87 Porter Avenue, Brooklyn, NYC - Area Tenants

The map shows the area around 65-87 Porter Avenue, Brooklyn, NYC, with a red star marking the location. The map includes street names such as Grand St, Ten Eyck St, Mead St, Scholes St, Meserole St, Johnson Ave, Boerum St, Grattan St, Thames St, Flushing Ave, Irving Ave, and St Nicholas St. A red star is located at the intersection of Johnson Ave and Flushing Ave. Various tenant logos are connected to the map by lines, indicating their locations in the area. The logos include:

- Saints COFFEE ROASTERS**
- livestream**
- FITZCARRALDO**
- NEWTOWN**
- ANCHORED INN**
- THE WICK MUSIC FORTRESS**
- Please JUST-BURY ME. IN A PINE BOX**
- ARROGANT SWINE**
- Falansai**
- The Cobra Club**
- Yoga & Spirals**
- GUADALUPE INN**
- LORTAZ**
- Cape House**
- Roberta's**
- MOMO SUSHI SHACK**
- KÁVÉ espresso bar & event space**
- BUNNA CAFE**

FOR INFORMATION CONTACT:

BEN WALLER | Licensed Associate Real Estate Broker
212-400-9515 | bwaller@absre.com

ABS Partners Real Estate, LLC • 200 Park Avenue South, New York, NY 10003 • T 212.400.6060 • F 212.400.6099 www.absre.com

All information is from sources deemed reliable but is subject to errors or omissions of any magnitude, withdrawal from market, or changes in terms, all without notice. Brokers employment and payment only by written agreement.

*Licensed Real Estate Broker • **Licensed Associate Real Estate Broker • ***Licensed Real Estate Salesperson

